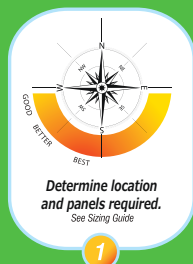


EASY TO INSTALL



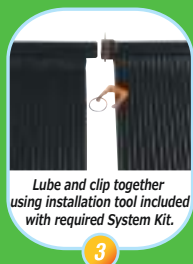
FAQ:



1



2



3



4

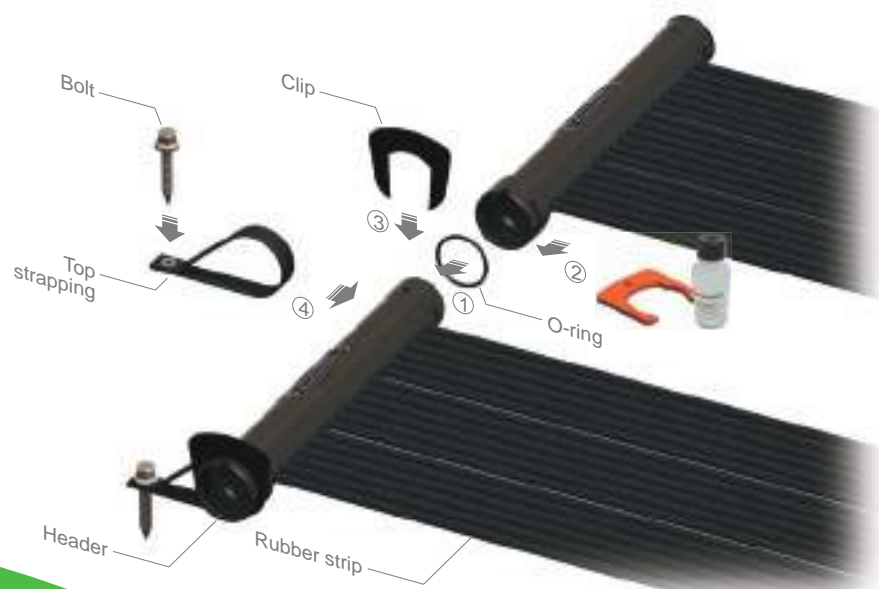


5



6

EASY TO ASSEMBLE



- 1 Install the O-ring into the header and lube the joint
- 2 Use the Installation Tool to slip the headers together
- 3 Lock the headers using the Clip
- 4 Fasten using the supplied strapping

Q. Why choose Enersol® Solar Pool Heaters?

A. The Solarprene® rubber used in the panels has demonstrated its durability over 35 years in harsh northern and scorching southern climates. The exclusive Slip & Clip technology allows for simple, fast and yet reliable assembly unlike other cumbersome connections. Enersol® panels are backed up by an 18 year limited warranty.

Q. How many panels do I need to heat up my pool?

A. In most cases, you will require a panel area equal to 50% of the pool surface area. Refer to sizing guide.

Q. How do I control the temperature?

A. An automatic controller is the most reliable way to ensure you add as much heat as possible and minimize heat losses at night or in cloudy conditions.

Q. How will the panels affect my roof?

A. As viewed in this 15 years old installation, Enersol® panels can actually help prevent damage by blocking harsh UV rays and reducing heat build-up in the attic.



FREE HEAT

Enjoy your pool and extend your swimming season without the burden of added heating cost

Add up to 15°F to your pool free from the sun!



THE LONGEST LASTING,
MOST DURABLE, ENVIRONMENTALLY
FRIENDLY POOL HEATING SOLUTION.

18 YEAR
LIMITED WARRANTY

enerworks
Solar Heating and Cooling
470 Industrial Ave.
Woodstock Ontario N4S 7L1 Canada

ENERSOL® POOL HEATER

18 YEAR LIMITED WARRANTY

SIZING GUIDE

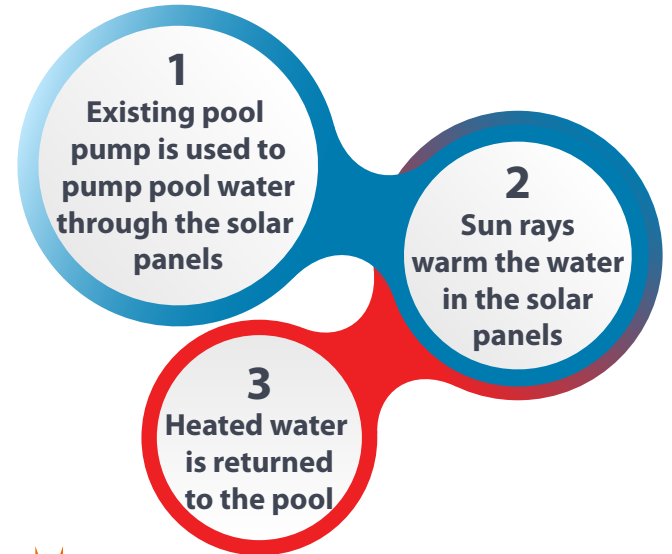
Enersol®

SOLAR POOL HEATING

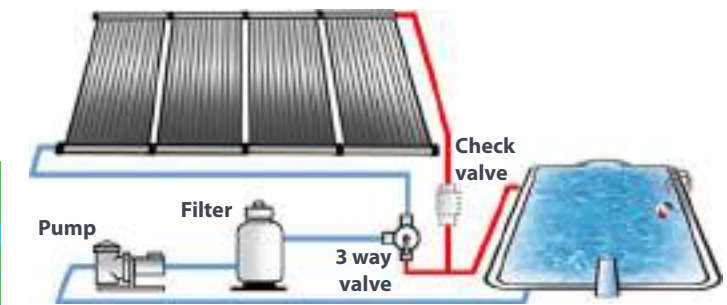
HOW IT WORKS



1' wide x 10' long panels		
In-ground pools	South facing roofs	West facing or shaded roofs
12' x 24' (288 sq.ft.)	14 panels	22 panels
14' x 28' (392 sq.ft.)	20 panels	29 panels
15' x 30' (450 sq.ft.)	23 panels	34 panels
16' x 32' (512 sq.ft.)	26 panels	38 panels
18' x 36' (648 sq.ft.)	32 panels	49 panels
20' x 40' (800 sq.ft.)	40 panels	60 panels
Above ground pools	South facing roofs	West facing or shaded roofs
15' round (177 sq.ft.)	9 panels	13 panels
18' round (254 sq.ft.)	13 panels	19 panels
21' round (346 sq.ft.)	17 panels	26 panels
24' round (452 sq.ft.)	23 panels	34 panels
27' round (572 sq.ft.)	29 panels	43 panels
12' x 24' oval (257 sq.ft.)	13 panels	19 panels
14' x 28' oval (349 sq.ft.)	17 panels	26 panels
15' x 30' oval (401 sq.ft.)	20 panels	30 panels
13' x 32' oval (456 sq.ft.)	23 panels	34 panels
18' x 33' oval (529 sq.ft.)	26 panels	40 panels



...free heat from the Sun!



PANELS MAY BE SET ON THE ROOF OR ON A RACK BUILT TO SUPPORT THE PANELS

SOLAR POOL HEATERS ARE PROVEN TO BE THE MOST COST EFFECTIVE WAY TO HEAT YOUR POOL

custom sizes available

Warm pools are more fun! No additional heating cost

Easy to install

www.enersol.com