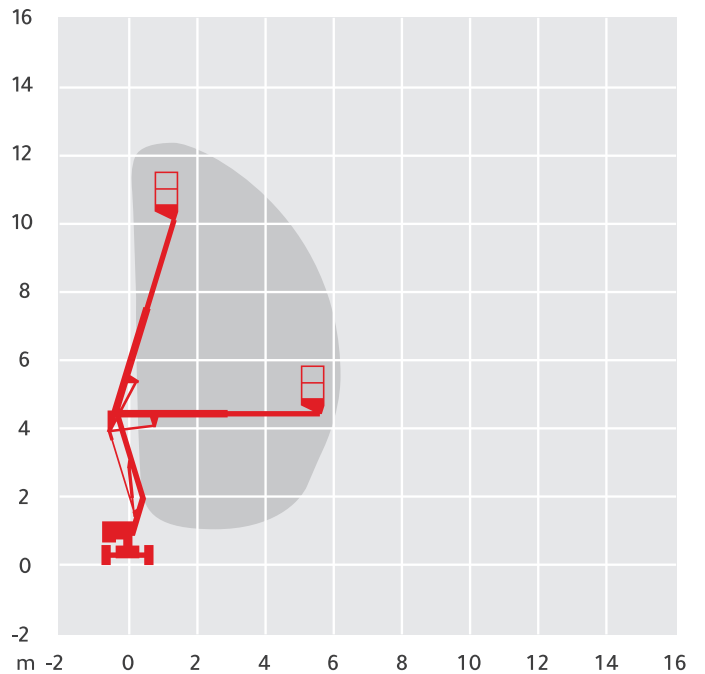




# NIFTYLIFT HR12N

Alternative Machines: NANO

|                     |              |
|---------------------|--------------|
| Working Height      | 12.2m        |
| Horizontal Outreach | 6.1m         |
| Closed Length       | 4.1m         |
| Closed Height       | 1.9m         |
| Closed Width        | 1.5m         |
| Platform Size       | 1.1m x 0.65m |
| Rotation            | 360°         |
| Max SWL             | 200kg        |
| Weight              | 3,060kg      |



**Please Note:** These details are set as a guide only and are subject to change due to manufacturer and supplier availability.