

ALUMINOUS OUTDOOR LIGHTING PRODUCT CATALOG

STEEL POLES

SQUARE TAPERED STEEL POLE - STS

Aluminous
114 Healey Road
Bolton, ON L7E 5R2

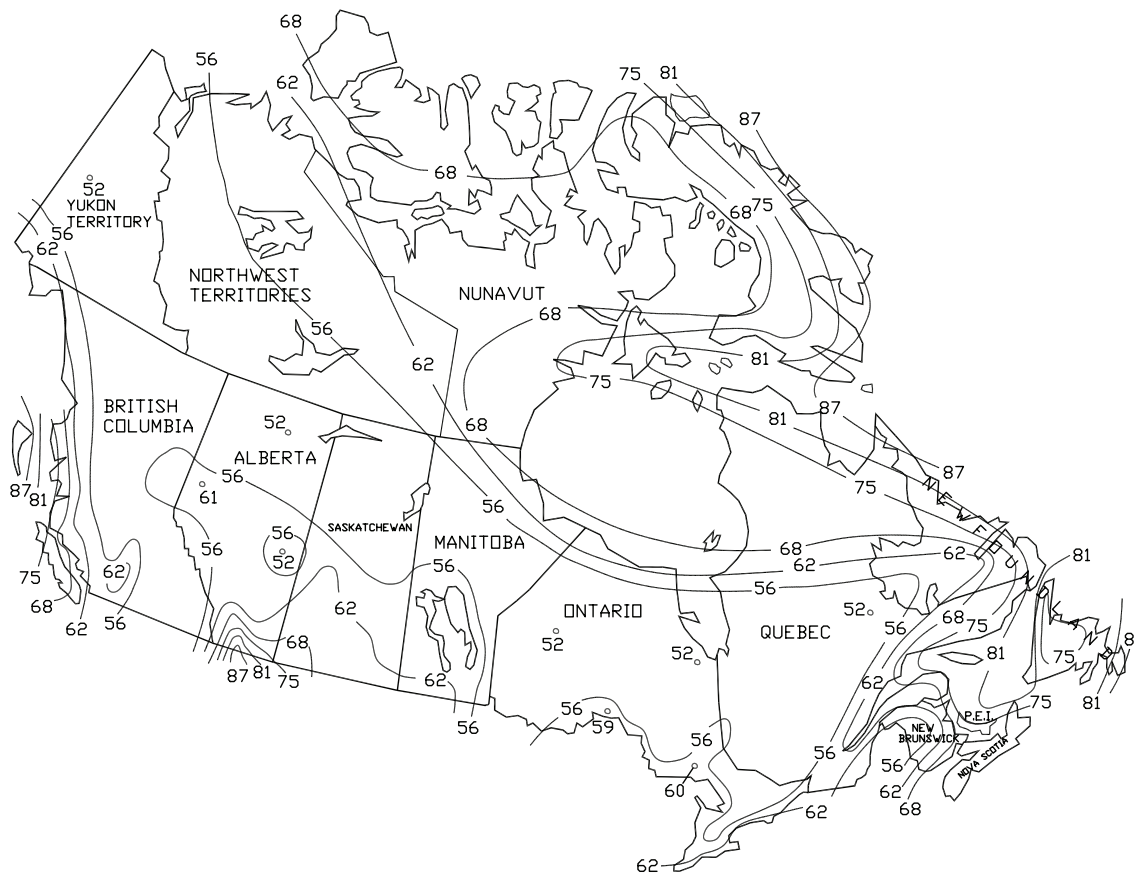
aluminous.com

ALUMINOUS
LIGHTING SYSTEMS

INTRODUCTION

This catalogue has been designed to assist you in selecting an area lighting product, which will meet your specific requirements. The diverse selection of pole sizes and mounting bracket options offered within this catalogue i.e. architectural, roadway traffic and tapered elliptical brackets, should accommodate most of your lighting needs. However, if the scope of your specifications or requirements cannot be fulfilled with these standard products, please contact us: we can custom-design an array of products to meet any criteria or specification.

WIND SPEED MAP



The wind speed map shows the maximum steady wind expected within a 50-year period of recurrence at an elevation of 30 feet above ground. If standards are mounted above grade, please call for assistance if needs arise. Since winds are unpredictable and usually involve gusts EPA calculation allows for a 1.3 gust factor. Aluminous Outdoor Lighting Products have been designed to withstand a specific wind load for each lighting standard. Please note: selecting the proper size pole for a specific application requires one to know the EPA of the total number of fixtures. Because of the different wind velocities in any geographical area reference should be made to the area where the pole is being installed. Proper selection should be made from the Canadian and U.S. Wind Speed Map. Aluminous Outdoor Lighting Products EPA rating is in conformity with the requirements of the AASHTO Standard specifications for structural support for poles and arm brackets. Please note: All maximum wind speeds are measured in mph (miles per hour).

CONTACT INFORMATION

Address: 600 Ferguson Avenue North Hamilton, Ontario L8L 4Z9 | **Telephone:** 1-877-625-7240 905-526-1771 |

Fax: 1-888-700-8656 905-526-6161 | **Email:** sales@aluminous.com | **Website:** www.aluminous.com

STEEL POLES

Square Tapered Steel Pole

| Catalogue Number | Pole Taper | Pole Height | Anchor Bolt Size |
|------------------|-----------------|-------------|------------------|
| STS-6040-20-AB | 6" SQ – 4" SQ | 20' | 3/4" X 24" |
| STS-6540-25-AB | 6.5" SQ – 4" SQ | 25' | 1" X 30" |
| STS-7040-27-AB | 7" SQ – 4" SQ | 27' | 1" X 30" |
| STS-7540-30-AB | 7.5" SQ – 4" SQ | 30' | 1" X 36" |
| STS-8040-35-AB | 8" SQ – 4" SQ | 35' | 1" X 36" |
| STS-9040-40-AB | 9" SQ – 4" SQ | 40' | 1-1/4" X 42" |

NOTES:

All poles are complete with hand hole cover and ground lug.

All base mounted poles are complete with galvanized steel anchor bolts, 2 nuts, 2 washers, and base cover.

Poles are Polyester coated standard colour. All other colours and galvanized subject to additional charges.

Material: Structural Steel CSA G40.12-44W

Bolts: 44 kpsi Min. Yield

Shaft: 50 kpsi Min. Yield

Anchor Bolt Projection: 3 - 4 inches

Concrete Min. Yield: 3500 psi

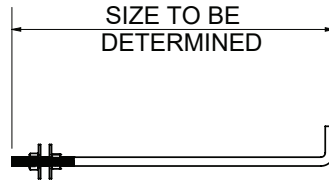
Welding Conforms to CSA W47.1 and W47.2

Need Help? Talk to Jerry: 905 857 8100

STEEL POLES - STS

| CATALOGUE NO | POLE HEIGHT | POLE TAPER | GAUGE | BCD | ANCHORAGE |
|----------------|-------------|-----------------|-------|-----|-----------|
| STS-6040-20-AB | 20 FT | 6" SQ - 4" SQ | TBD | TBD | TBD |
| STS-6540-24-AB | 24 FT | 6.5"SQ - 4" SQ | TBD | TBD | TBD |
| STS-7040-27-AB | 27 FT | 7" SQ - 4" SQ | TBD | TBD | TBD |
| STS-7540-30-AB | 30 FT | 7.5" SQ - 4" SQ | TBD | TBD | TBD |
| STS-8040-35-AB | 35 FT | 8" SQ - 4" SQ | TBD | TBD | TBD |
| STS-9040-40-AB | 40 FT | 9" SQ - 4" SQ | TBD | TBD | TBD |

SQUARE TAPER
STEEL SHAFT



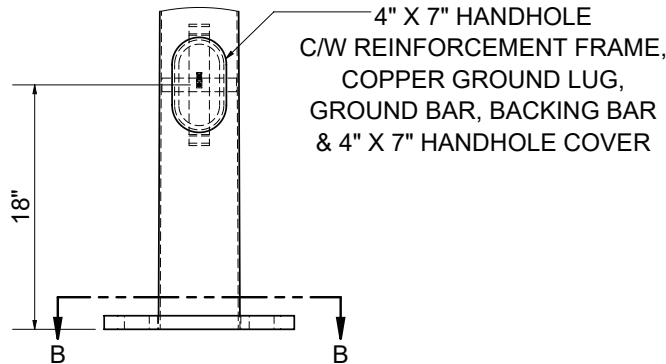
ANCHOR BOLTS,
C/W 2-NUTS, 2-WASHERS
& TEMPLATE

PLASTIC
TOP CAP

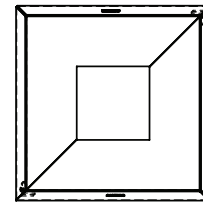


SINGLE DRILL
OR
TENON MOUNT

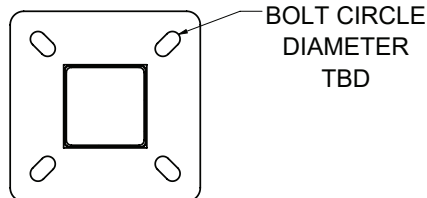
DETAIL C
SCALE 1 : 13



DETAIL A
SCALE 1 : 13



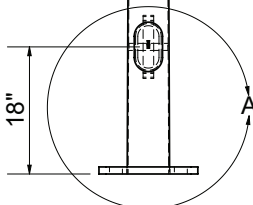
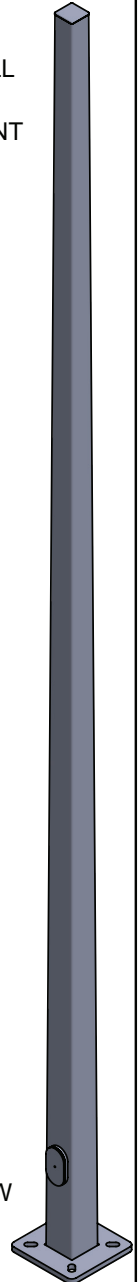
SQAURE BASE COVER
(OPTIONAL)



BOLT CIRCLE
DIAMETER
TBD

SECTION B-B
SCALE 1 : 13

FINISH: POWDER COAT
MATERIAL: STRUCTURAL STEEL CSA40.21 44W
ALL DIMENSIONS ARE IN IMPERIAL UNIT.



| | | |
|---|-------------------------------------|--------------------|
| ALUMINOUS LIGHTING SYSTEMS Roadway. Commercial. Institutions. 114 HEALEY RD., BOLTON, ONTARIO L7E 5R2 PHONE: 905-857-8100 FAX: 905-857-8131 | DRAWN BY NANDISH | DATE 2019-10-23 |
| | DESCRIPTION: STS-XX-XX-AB-PC-BC | |
| | MATL: STRUCTURAL STEEL 44W | |
| <small>THIS DOCUMENT IS THE PROPERTY OF ALUMINOUS LIGHTING PRODUCT AND IS LOANED SUBJECT TO RETURN ON DEMAND. UNDER NO CIRCUMSTANCES IT IS TO BE REPRODUCED OR COPIED IN WHOLE OR IN PART. THE CONTENTS ARE CONFIDENTIAL AND MUST NOT BE SUBMITTED TO OUTSIDE PARTIES FOR USE OR EXAMINATION. ALL PRODUCTION AND INTELLECTUAL RIGHTS RESERVED</small> | CATALOGUE NO: STS-XX-XX-AB-PC-BC | REV 0 |