

# ALUMINOUS OUTDOOR LIGHTING PRODUCT CATALOG

## ROADWAY

DAVIT ('D') POLE SPECIFICATIONS - DP  
ALUMINUM LIGHT POLES SINGLE AND TWIN ARM

Aluminous  
114 Healey Road  
Bolton, ON L7E 5R2

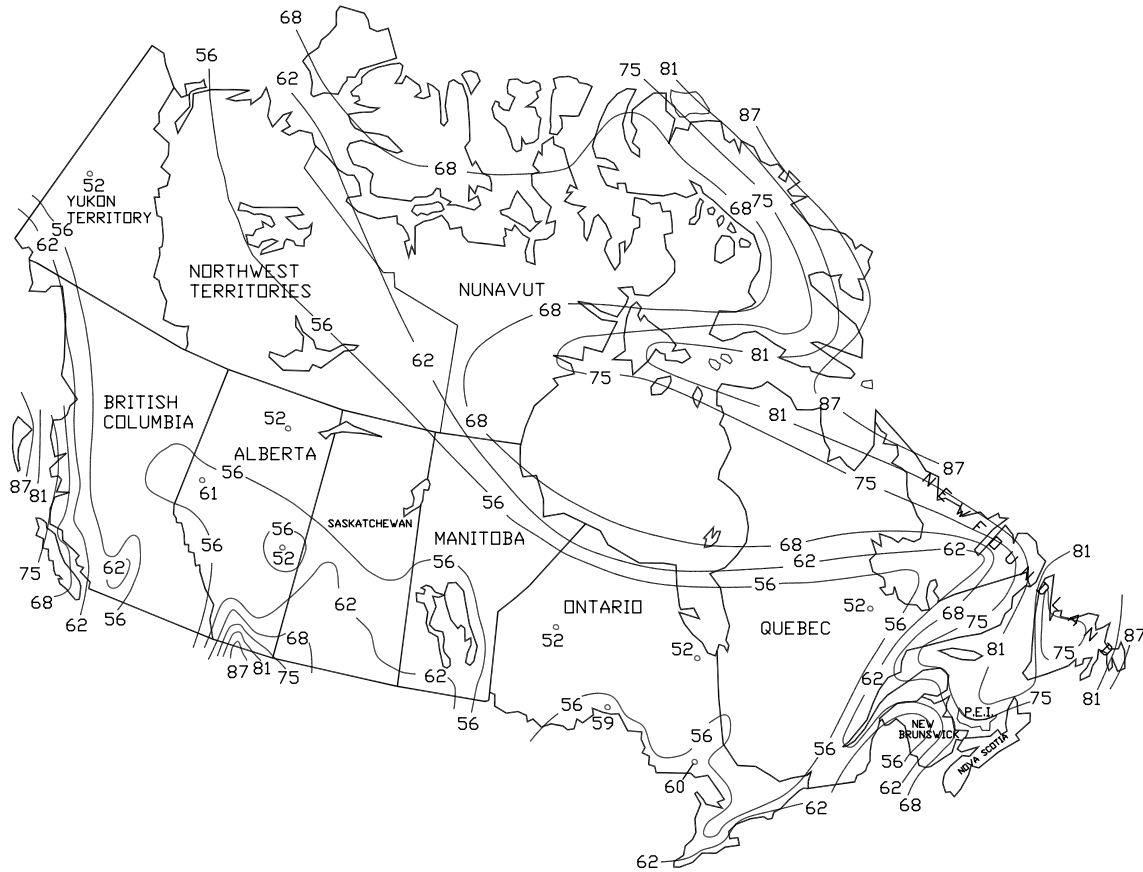
[aluminous.com](http://aluminous.com)

**ALUMINOUS**  
LIGHTING SYSTEMS

# INTRODUCTION

This catalogue has been designed to assist you in selecting an area lighting product, which will meet your specific requirements. The diverse selection of pole sizes and mounting bracket options offered within this catalogue i.e. architectural, roadway traffic and tapered elliptical brackets, should accommodate most of your lighting needs. However, if the scope of your specifications or requirements cannot be fulfilled with these standard products, please contact us: we can custom-design an array of products to meet any criteria or specification.

## WIND SPEED MAP



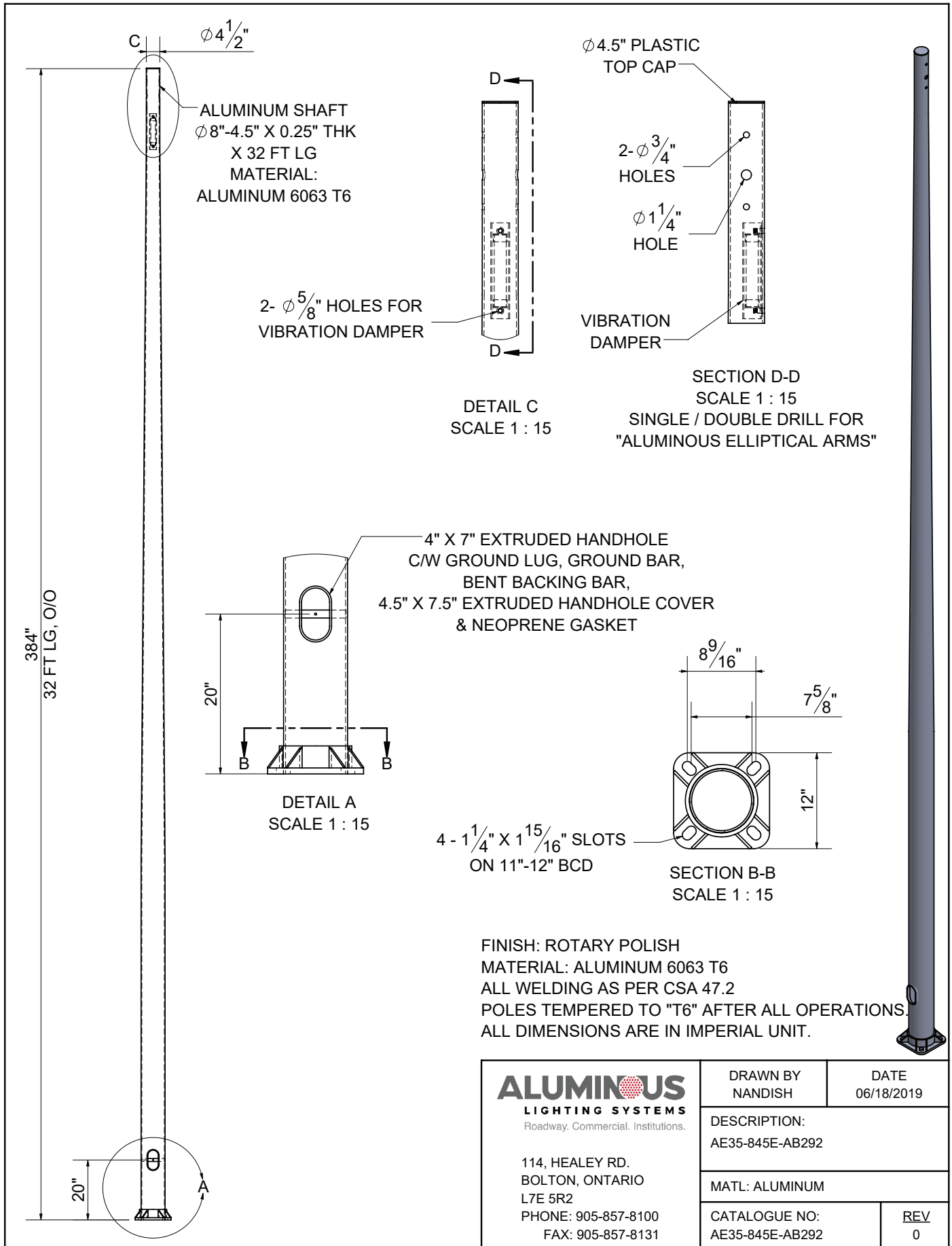
The wind speed map shows the maximum steady wind expected within a 50-year period of recurrence at an elevation of 30 feet above ground. If standards are mounted above grade, please call for assistance if needs arise. Since winds are unpredictable and usually involve gusts EPA calculation allows for a 1.3 gust factor. Aluminous Outdoor Lighting Products have been designed to withstand a specific wind load for each lighting standard. Please note: selecting the proper size pole for a specific application requires one to know the EPA of the total number of fixtures. Because of the different wind velocities in any geographical area reference should be made to the area where the pole is being installed. Proper selection should be made from the Canadian and U.S. Wind Speed Map. Aluminous Outdoor Lighting Products EPA rating is in conformity with the requirements of the AASHTO Standard specifications for structural support for poles and arm brackets. Please note: All maximum wind speeds are measured in mph (miles per hour).

## CONTACT INFORMATION

**Address:** 600 Ferguson Avenue North Hamilton, Ontario L8L 4Z9 | **Telephone:** 1-877-625-7240 905-526-1771 |

**Fax:** 1-888-700-8656 905-526-6161 | **Email:** sales@aluminous.com | **Website:** www.aluminous.com

# ROADWAY - DP



<p><b>ALUMINOUS</b>  <b>LIGHTING SYSTEMS</b>  <small>Roadway, Commercial, Institutions.</small></p> <p>114, HEALEY RD.          BOLTON, ONTARIO          L7E 5R2          PHONE: 905-857-8100          FAX: 905-857-8131</p>	<b>DRAWN BY</b> NANDISH	<b>DATE</b> 06/18/2019
	<b>DESCRIPTION:</b> AE35-845E-AB292	
	<b>MATL:</b> ALUMINUM	
	<b>CATALOGUE NO:</b> AE35-845E-AB292	<b>REV</b> 0

# ROADWAY

## Davit ('D') Pole Specifications

### Aluminum Lighting Poles Single and Twin Arm

Catalogue Number*	Mounting Height	No. of Arms	Shaft Size			Bracket Size			Anchor Base Detail					Direct Burial
			Height	Taper	Wall	Length	Taper	Wall	A	BC	S	A/BOLTS	E	
	L		H		C									
	FEET		FEET	IN.	IN.	FEET	IN.	IN.	IN.	IN.	IN.	IN.	FEET	
AD2541-AB	25	1	17.5	7 - 5	.156	4	5-2.375	.188	7.0625	10.5	11	1 X 30	2.5	4' - 6"
AD2542-AB		2	17.5	7 - 5	.156	4	5-2.375	.188	7.0625	10.5	11	1 X 30	2.5	4' - 6"
AD2561-AB		1	17.5	7 - 5	.156	6	5-2.375	.188	7.0625	10.5	11	1 X 30	2.5	4' - 6"
AD2562-AB		2	17.5	7 - 5	.156	6	5-2.375	.188	7.0625	10.5	11	1 X 30	2.5	4' - 6"
AD2581-AB		1	17.5	7 - 5	.156	8	5-2.375	.188	7.0625	10.5	11	1 X 30	2.5	4' - 6"
AD2582-AB		2	17.5	7 - 5	.188	8	5-2.375	.188	7.0625	10.5	11	1 X 30	2.5	4' - 6"
AD3041-AB	30	1	22.5	8 - 5	.156	4	5-2.375	.188	8.125	11.5	12	1 X 30	2.75	5' - 0"
AD3042-AB		2	22.5	8 - 5	.156	4	5-2.375	.188	8.125	11.5	12	1 X 30	2.75	5' - 0"
AD3061-AB		1	22.5	8 - 5	.156	6	5-2.375	.188	8.125	11.5	12	1 X 30	2.75	5' - 0"
AD3062-AB		2	22.5	8 - 5	.156	6	5-2.375	.188	8.125	11.5	12	1 X 30	2.75	5' - 0"
AD3081-AB		1	22.5	8 - 5	.156	8	5-2.375	.188	8.125	11.5	12	1 X 30	2.75	5' - 0"
AD3082-AB		2	22.5	8 - 5	.188	8	5-2.375	.188	8.125	11.5	12	1 X 30	2.75	5' - 0"
AD3541-AB	35	1	27.5	8 - 5	.188	4	5-2.375	.188	8.125	11.5	12	1 X 30	2.75	5' - 6"
AD3542-AB		2	27.5	8 - 5	.188	4	5-2.375	.188	8.125	11.5	12	1 X 30	2.75	5' - 6"
AD3561-AB		1	27.5	8 - 5	.188	6	5-2.375	.188	8.125	11.5	12	1 X 30	2.75	5' - 6"
AD3562-AB		2	27.5	8 - 5	.250	6	5-2.375	.188	8.125	11.5	12	1 X 30	2.75	5' - 6"
AD3581-AB		1	27.5	8 - 5	.250	8	5-2.375	.188	8.125	11.5	12	1 X 30	2.75	5' - 6"
AD3582-AB		2	27.5	8 - 5	.250	8	5-2.375	.188	8.125	11.5	12	1 X 30	2.75	5' - 6"
AD4041-AB	40	1	30	10 - 6	.188	4	6-2.375	.188	10.625	15	14	1 X 30	3	6' - 0"
AD4042-AB		2	30	10 - 6	.188	4	6-2.375	.188	10.625	15	14	1 X 30	3	6' - 0"
AD4061-AB		1	30	10 - 6	.188	6	6-2.375	.188	10.625	15	14	1 X 30	3	6' - 0"
AD4062-AB		2	30	10 - 6	.188	6	6-2.375	.188	10.625	15	14	1 X 30	3	6' - 0"
AD4081-AB		1	30	10 - 6	.188	8	6-2.375	.188	10.625	15	14	1 X 30	3	6' - 0"
AD4082-AB		2	30	10 - 6	.188	8	6-2.375	.188	10.625	15	14	1 X 30	3	6' - 0"

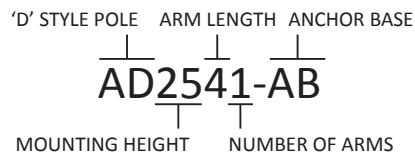
#### NOTES:

Pole to support luminaire not exceeding 3 sq. ft. x 80 lbs.

\*for direct burial pole, substitute 'AB' for 'DB' in catalog number.

**Need Help? Talk to Jerry: 905 857 8100**

## POLE DESIGNATION:



For direct burial pole, substitute "AB" for "DB" in catalogue number.

## APPLICATION:

For the lighting of streets and highways, parking lots, residential and area lighting.

## SPECIFICATIONS:

Round tapered aluminium shaft with Davit arm(s) detachable for shipping and wiring. Arms(s) tapered to 2" IPS (2 3/8" O.D.).

## EQUIPMENT:

Poles are supplied complete with 4" x 7" handhole and cover, 1" x 30" anchor bolts (4), nuts, washers, shims, covercaps and arm attachment hardware. Alkali-resistant coal tar epoxy applied for buried portion of "DB" poles. Direct burial poles supplied complete with 2" x 9" wiring slot below grade.

## FINISH:

Rotary polished natural aluminum