



MANUS™

## Pro Tracker

*To make use of the Manus Pro Tracker compatible applications have to be used*

### Pro Tracker for Motion Capture, Virtual Production and full-body Virtual Reality

The Manus Pro Tracker is a professional SteamVR tracker designed specifically for Motion Capture, Virtual Production, and full-body Virtual Reality.

With the most sensors in a SteamVR tracker on the market, it offers unmatched tracking accuracy. Its precise shape is optimized for both a light-weight design and great attachment stability.

With the integrated mount, the tracker can be directly attached on Manus Prime II Series Motion Capture & Virtual Reality gloves.

For full-body tracking, the tracker can be easily attached to the comfortable and adjustable Manus strap-set. The tracker and the strap-set combined are perfect for Polygon, Manus Core's full-body inverse-kinematics solver, a convenient and cost-effective solution for Motion Capture and full-body Virtual Reality. The tracker can be attached directly to any camera through its cold shoe, as well as on props, tools, machines, and surfaces, using the 1/4" camera thread adapter and 3M adhesive tape adapter..

Through the SteamVR software integration, the tracker can be used natively in industry-standard real-time engines, such as Unreal Engine and Unity. In addition to SteamVR, the tracker can also be used through OpenVR and its OpenXR spiritual successor. Both SDKs offer unparalleled cross-platform support for high-performance devices, such as the Manus Pro Tracker.

Through the tracker's OpenVR compatibility, you can use it for 3D Positional Aiding in Xsens MVN, together with an Xsens Motion Capture suit and Manus Prime II Xsens gloves.

The Manus Pro Tracker offers an interchangeable battery. In addition to the already great 4½ hours of real-world battery life, the battery can be replaced within seconds. The Manus charger reduces down-time to a minimum, allowing users to stay productive for as long as they need. Fully charging the battery only takes just over an hour.

Whether the tracker is used for Motion Capture, Virtual Production, or Virtual Reality, it offers creative professionals the best functionality, accuracy, and ease-of-use available.

MANUS™

## Pro Tracker

### Features

01

#### Accurate SteamVR Tracking

Not only does the Manus Pro Tracker feature the most sensors in any SteamVR tracker available, it uses the latest sensors of its kind as well, resulting in more reliable SteamVR data. Whether the tracker is used for Motion Capture, Virtual Production, or Virtual Reality, it is the most accurate SteamVR tracker available.

02

#### Interchangeable Battery

The Manus Pro Tracker is the only SteamVR tracker on the market offering an interchangeable battery. In addition to the improved 4½ hours of real-world battery life, the battery can be replaced within seconds. The additional charger further reduces down-time to a minimum, allowing users to stay productive for as long as they need.

03

#### Universal Mounting System

The integrated universal mounting adapter enables easy attachment of the Manus Pro Tracker on Manus Prime II Series Motion Capture & Virtual Reality gloves. The Manus strap-set is the most stable and universal solution available for wearing professional SteamVR trackers on your body. The tracker and strap-set combined are perfect for Polygon, Manus Core's full-body inverse-kinematics solution.

04

#### Light & Stable

To improve both comfort and stability, the weight has been greatly reduced to a mere 62 grams. The tracker is 44% lighter when compared to available alternatives.

05

#### Charging

The Manus Pro Tracker features USB-C for easy charging and wired use. Fully charging the tracker takes just over an hour.



# MANUS™ Pro Tracker

## Plugins



MVN Animate

## Runtime & API



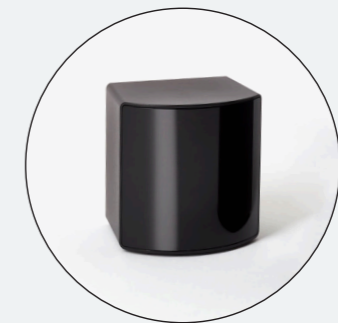
## Hardware specs.

Battery duration	4,5 hrs (swappable)
Battery charging duration	1 hour and 15 minutes
Charging	USB-C (5V)
Weight	62 grams
Weight without battery	46 grams
Mount compatibility	Manus Universal Mounting System, Cold Shoe
SteamVR tracking accuracy	Sub-millimeter
SteamVR update rate	250Hz to 1kHz
Wired Communication	SteamVR protocol over USB-C
Wireless Communication	SteamVR protocol over 2.4 GHz
Wireless Range	Up to 25 meters
SteamVR Tracking Range	Up to 7 meters
SteamVR Tracking Volume	Up to 10x10 meters
SteamVR Base Stations Compatibility	Version 1.0 & 2.0
SteamVR Base Station Amount	1 to 4 base stations supported, at least 2 recommended

## Compatibility



SteamVR 1.0 Base Station



SteamVR 2.0 Base Station