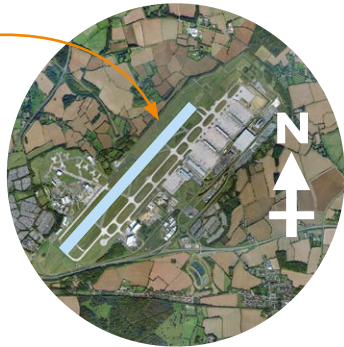


OVERVIEW

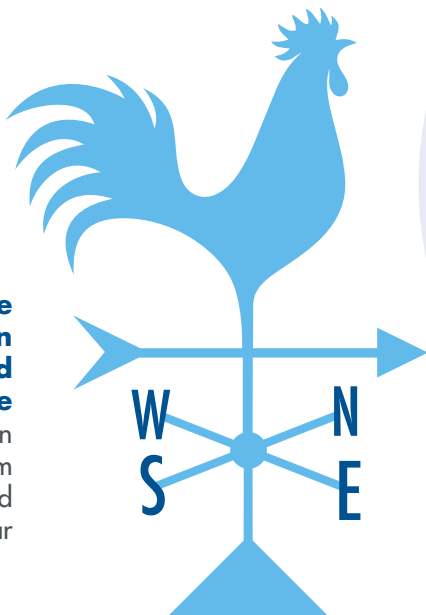
London Stansted Airport has a **single runway**, which is aligned in a south-west to north-east direction



For safety reasons, **aircraft must land and take off into the wind**, therefore wind direction determines which direction the runway operates at any given time

Depending on the operational direction of the runway it is referred to as either **Runway 22** or **Runway 04**

Most of the time at London Stansted, the wind comes from the south-west, but can vary considerably from month to month and year to year



The **direction of the wind is assessed at the airport at ground level**

Air Traffic Control also receive reports from air crew. It is important to note that the wind speed and direction recorded at ground level at the airport can vary considerably to levels recorded at a higher altitude or in other local areas.

Runway 04 is in use approximately **30% of the time**, on the occasions when the **wind is coming from the north-east**



Arriving aircraft must land from the south-west

Even if the aircraft has come from a northerly or easterly part of the world, it must go past the airport and turn so that it approaches from the correct direction for landing

Departing aircraft must take off into the north-east – even if they are heading to a southerly or westerly part of the world, they must take off in the correct direction, and then turn to head towards their destination

Runway 22 is in use approximately **70% of the time** due to the prevailing **wind direction** which is **from the south-west**



Arriving aircraft must land from the north-east

Even if the aircraft has come from a southerly or westerly part of the world, it must go past the airport and turn so that it approaches from the correct direction for landing

Departing aircraft must take off into the south-west

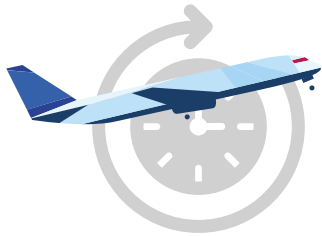
Even if they are heading to a northerly or easterly part of the world, they must take off in the correct direction, and then turn to head towards their destination



OVERVIEW

London Stansted served **28m passengers** in 2019, making it the fourth busiest airport in the UK

28m



The airport operates **24 hours a day, 365 days a year**

During the peak summer months, the airport will see up to an average of **600 arriving and departing aircraft per day** and an average of 500 in the winter months



Our runway caters for a wide range of aircraft which include **freight, commercial** and **private**



Over **264,000 tonnes** of **air cargo** passed through the airport in the year 2018

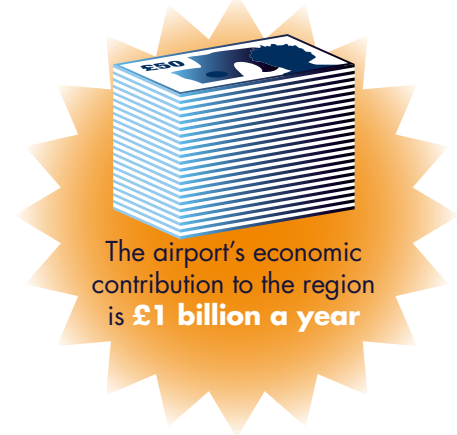
Over a year there are approximately **200,000 flights** to **over 200 destinations**, in **over 40 countries**, flown by **over 20 airlines** and tour operators



Most popular country destination:
Spain



Top UK destinations:
Edinburgh
Belfast
Glasgow



The airport's economic contribution to the region is **£1 billion a year**



London Stansted offers an unrivalled European route network, with the **most European destinations of any UK airport**



Most popular international destinations:

- 1. Dublin
- 2. Rome
- 3. Malaga
- 4. Barcelona
- 5. Cologne



12,000

At London Stansted over **200 companies** employ over **12,000 people on-site**

