

2024

This is FET Learners with Disabilities

SOLAS
learning works



Co-funded by
the European Union



Rialtas na hÉireann
Government of Ireland

**Further
Education
& Training**

A report by the
Data Analytics Unit
August 2025

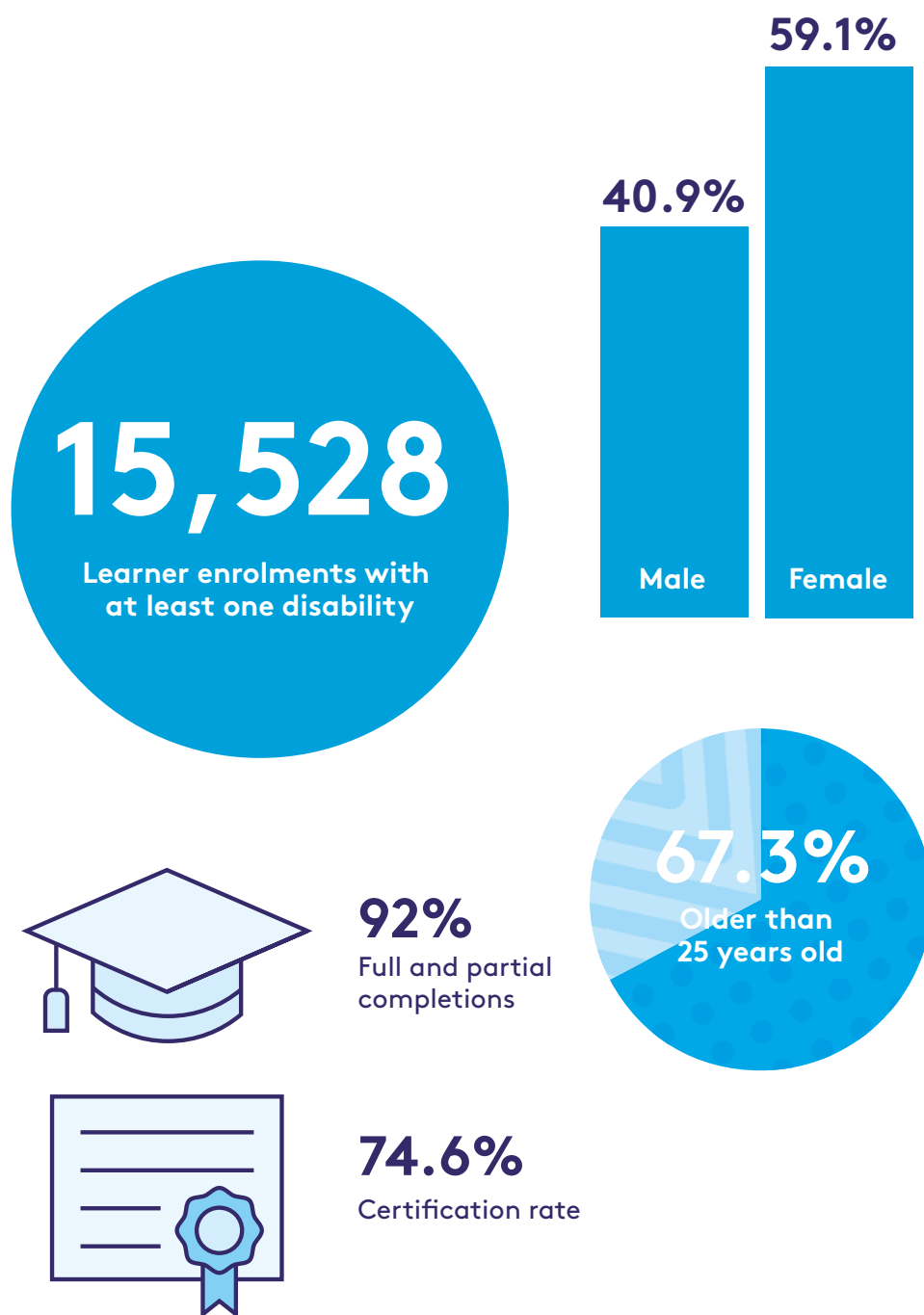
Authors

Selen Guerin
Amelia Dulee-Kinsolving

All data is sourced from the Programme and Learner Support Systems (PLSS) database. PLSS collects and processes the personal data of the FET learners who are enrolled in SOLAS funded programmes. This report excludes apprenticeship provision and eCollege.

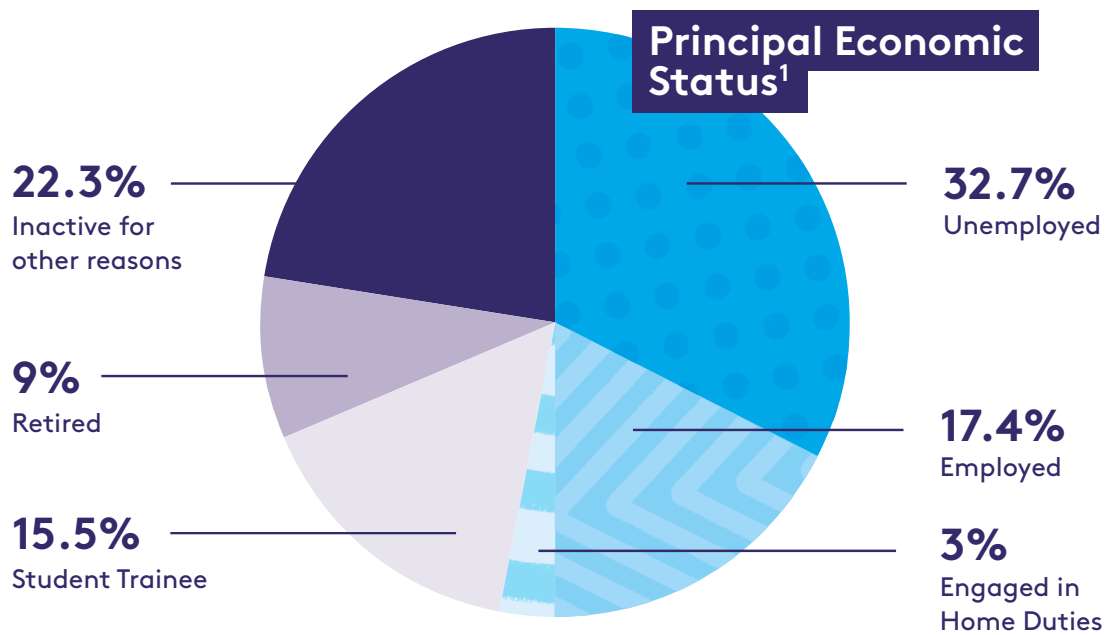
The Data Analytics Unit would like to acknowledge the assistance of the ETB staff involved in submitting data to SOLAS.

Enrolments



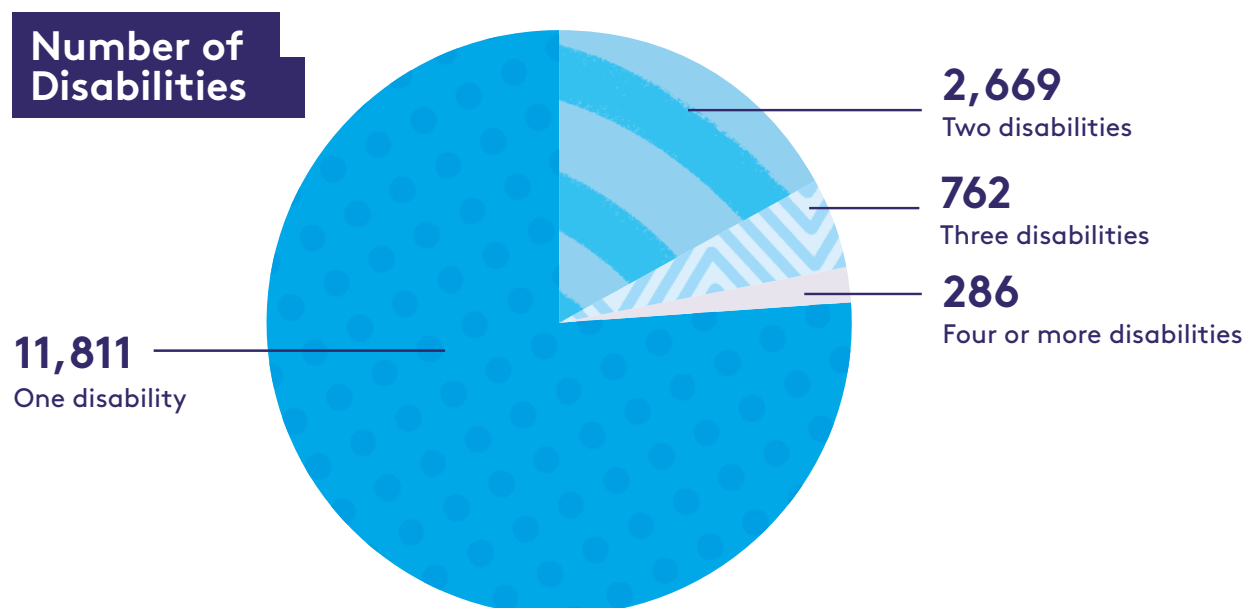
In 2024, there were 15,528 learners enrolled who reported having at least one type of disability in the further education and training programmes. This figure constitutes 6.8% of all learners enrolled in the same year. Of the learner enrolments that reported a disability, 40.9% were men and 59.1% were women. The majority (67.3%) of these learners were older than 25 years of age.

There were also 92% of learners that reported a disability who partially or fully completed a course in 2024. The certification rate for those learners who reported a disability and completed certified courses was 74.6% in 2024, up from 72.5% in 2023.

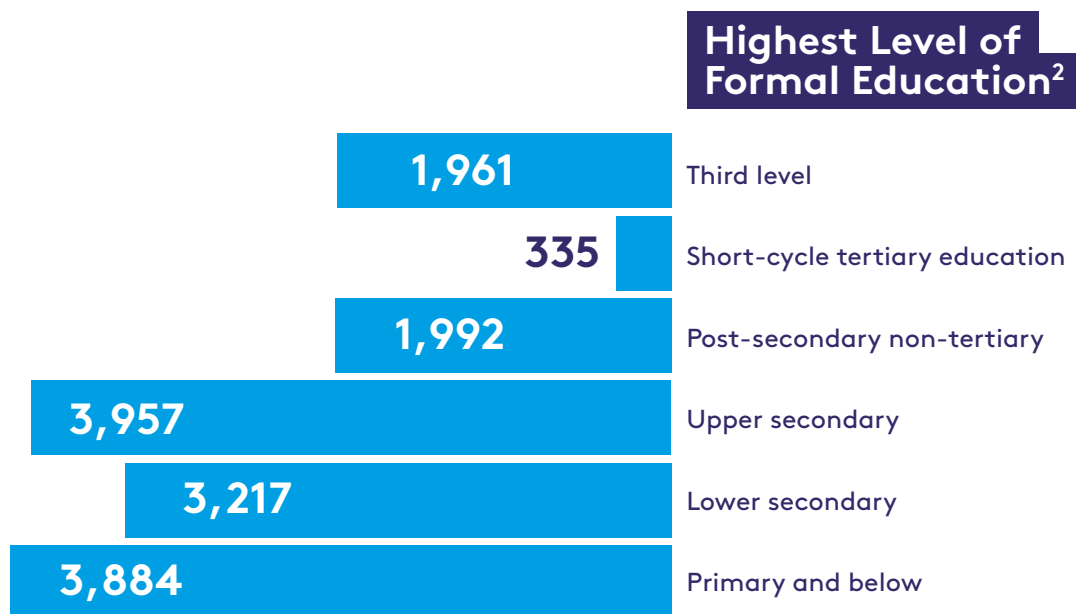


The majority of learners that reported a disability were either unemployed or economically inactive.

The chart below indicates that 11,811 learners reported one type of disability, 2,669 learners reported two, and 1,048 reported three or more.



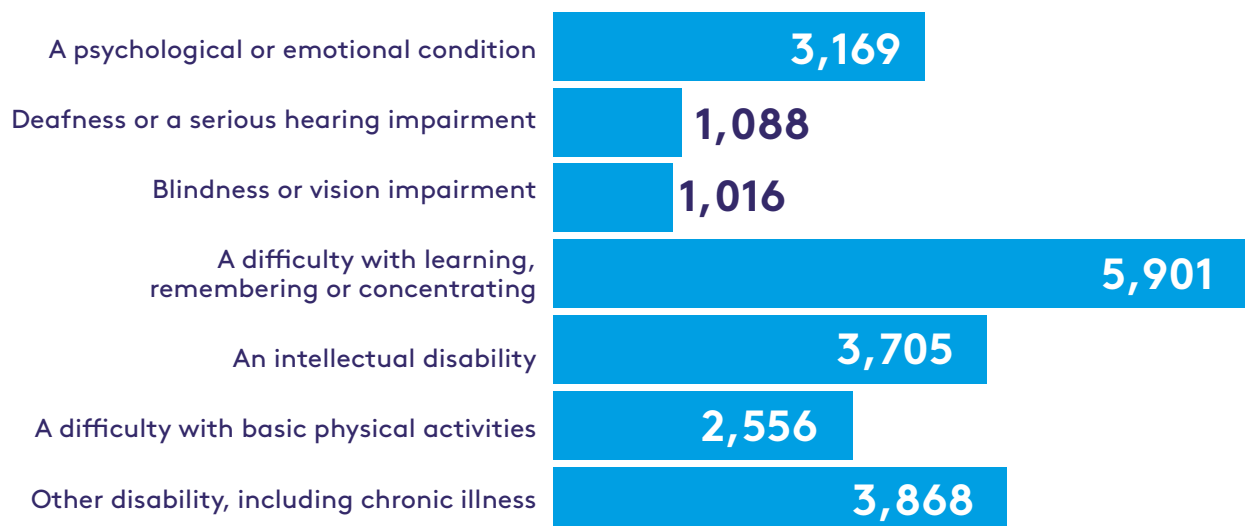
¹ It should be noted that this includes only those cases where previous principal economic status was captured.



Approximately 46.3% percent of the learners had lower secondary or a lower level education attained prior to joining further education and training.

The chart below indicates that 5,901 (38%) of learners reported difficulty with learning, remembering or concentrating, 3,868 (25%) another type of disability, including chronic illness, and 3,705 (23.9%) an intellectual disability.

Total Number of Learners by Type of Disability³



² It should be noted that this figure is an estimate and includes only those cases where previous levels of education were captured.

³ Learners here are unique within each type of disability but not necessarily across disabilities.

ETB	Learners
Cavan and Monaghan ETB	596
City of Dublin ETB	2,320
Cork ETB	944
Donegal ETB	332
Dublin and Dun Laoghaire ETB	2,301
Galway and Roscommon ETB	345
Kerry ETB	405
Kildare and Wicklow ETB	1,039
Kilkenny and Carlow ETB	619
Laois and Offaly ETB	946
Limerick and Clare ETB	551
Longford and Westmeath ETB	707
Louth and Meath ETB	1,465
Mayo, Sligo and Leitrim ETB	1,016
Tipperary ETB	765
VSCSS	28
Waterford and Wexford ETB	1,310

Of the 15,528 learners that reported a disability, 2,320 (14.8%) were enrolled in the City of Dublin ETB and, 2,301 (14.7%) were enrolled in the Dublin and Dun Laoghaire ETB. This figure was followed by 1,465 who were enrolled in the Louth and Meath ETB, representing 9.3% of learners that reported at least one disability.

⁴ Learners here are unique within ETBs but not necessarily across ETBs.

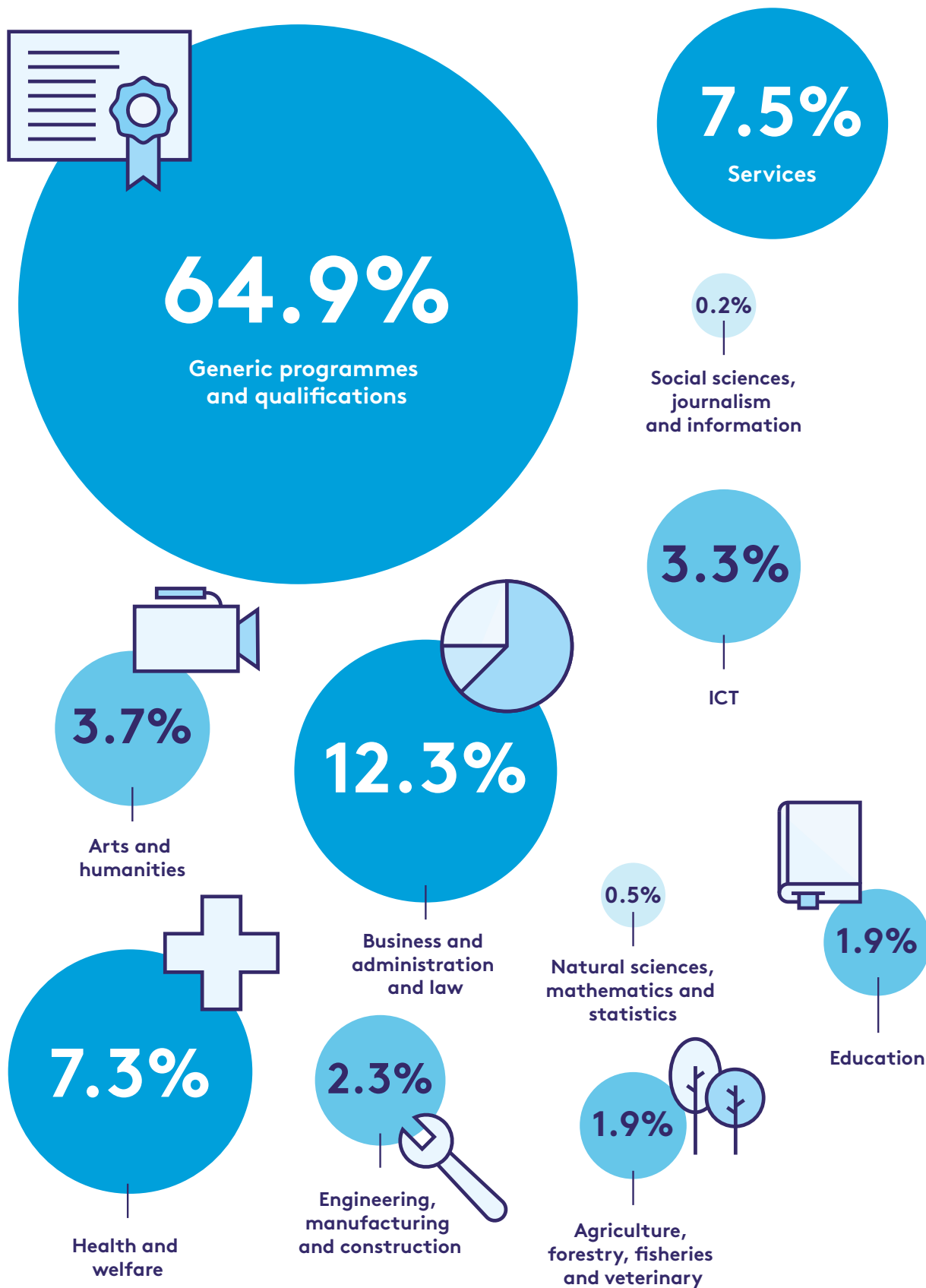
Programme Category⁵

Programme Category	Learners
Adult Literacy Tuition	3,947
Blended Training	55
Bridging Foundation Training	43
BTEI Groups	1,729
Community Education	3,756
Community Training Centres	352
ESOL	1,269
Evening Training	378
FET Cooperation Hours	258
ITABE	62
Justice Workshop	26
Local Training Initiatives	232
Other Funding	43
PLC	2,263
Skills to Advance	326
Skills for Work	49
Specialist Training Providers	806
Specific Skills Training	501
Traineeship Employed	33
Traineeship Training	180
Voluntary Literacy Tuition	23
VTOS Core	274
Youthreach	980

Among FET programmes, enrolments were primarily concentrated among Adult Literacy, Community Education, and PLC programmes.

⁵ Learners here are unique within programmes but not necessarily across programmes.

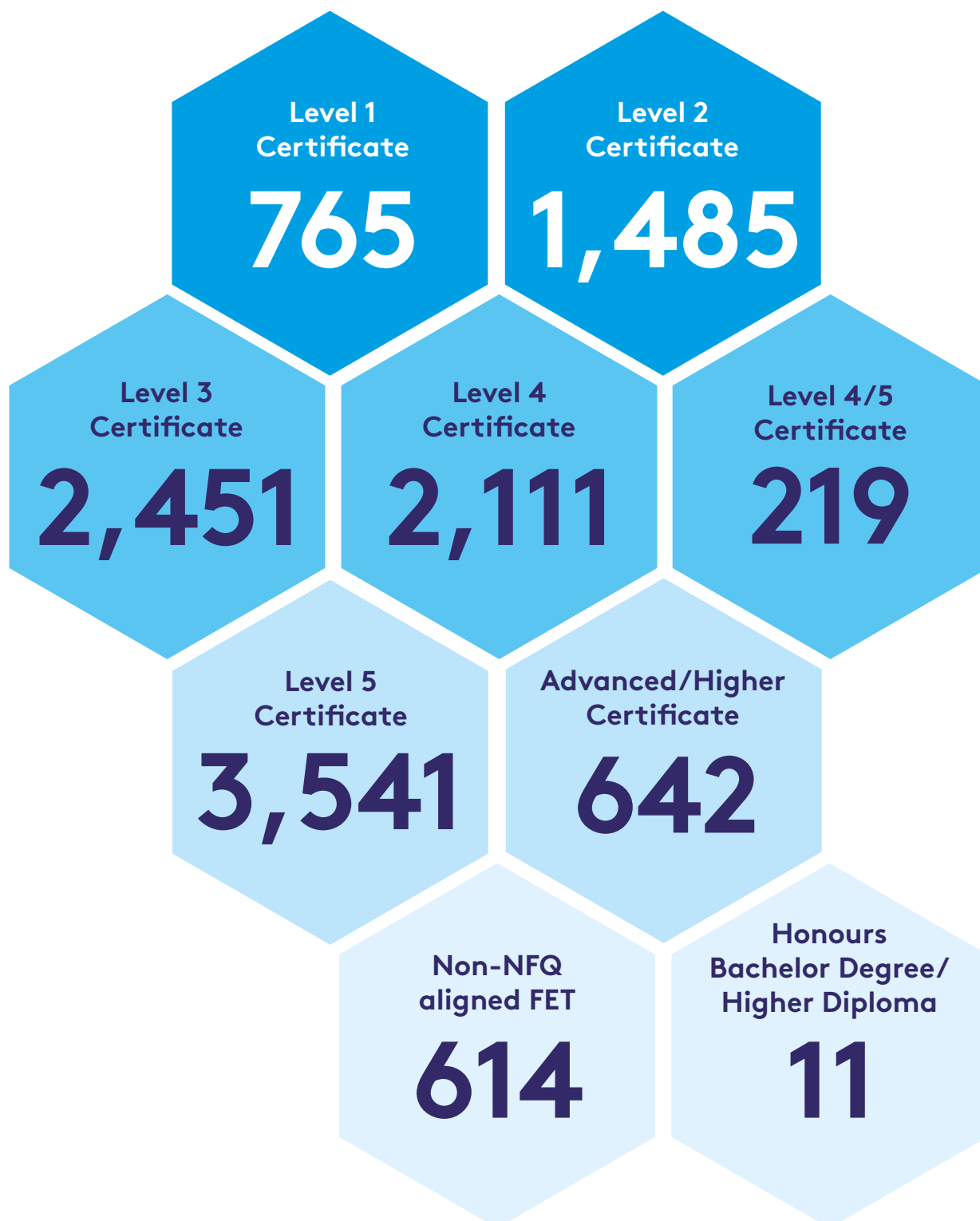
Field of Study (Broad ISCED)⁶



⁶ Learners here are unique within ISCED field of study but not necessarily across fields of study.

Field of Study (Broad ISCED)	Examples of courses
Generic programmes and qualifications	Employability Skills ESOL English Language Health and Wellbeing Arts and Crafts
Business and administration and law	Start your own Business Office Administration
Health and welfare	Nursing Studies Applied Social Studies
Services	Beauty Therapy Sports, Recreation and Exercise
Arts and humanities	Art, Craft and Design Film and TV Production
Education	Early Childhood Care and Education Special Needs Assisting
ICT	Computer Systems and Networks Computer Basics
Engineering, manufacturing and construction	Welding Engineering Technology
Agriculture, forestry, fisheries and veterinary	Horticulture Animal Care
Natural sciences, mathematics and statistics	Applied Science/ Laboratory Techniques Pre-University Science
Social sciences, journalism and information	Journalism for the Digital Age Cultural and Heritage Studies

Irish National Framework of Qualifications (NFQ) or Equivalent⁷



⁷ Learners here are unique within course levels but not necessarily across. Excludes learners enrolled in courses that do not lead to an award through a recognised awarding body.

Definition of Terms

Certification Rate

The proportion of full and partial learner completions who achieved certification to all learners who completed a certified course in 2024.

Completions

Completions include the total number of learners who fully or partially completed their course during 2024. Completions exclude those learners who may have left their course early (e.g. early leavers).

Enrolments

Enrolments are defined as learners who are on course or have completed a course during 2024.

Field of Study

This is defined and categorised by the International Standard Classification of Education (ISCED). In this report, only broad (2-digit) fields of study are used for categorising Further Education and Training courses.

Full Completions

Learners who have completed 90 per cent or more of the course and its requirements in 2024.

Irish National Framework of Qualifications (NFQ)

This is a framework through which all learning achievements may be measured and related to each other in a coherent way. The many different types and sizes of qualifications included in the NFQ are organised based on their level of knowledge, skill and competence. In some cases, where awards have not been placed on the Irish NFQ, equivalent levels are assigned based on the document 'Qualifications can cross boundaries' and the level assigned to the award on the relevant country's framework (e.g. Cf. Ofqual, Scottish Credit and Qualifications Framework, etc.).

Learner

A unique individual who has progressed onto a course in the application process. The total number of learners is the sum of all unique individuals in Further Education and Training in 2024.

Non-NFQ Aligned courses

This includes completions with certification not aligned with the NFQ.

On Course

This refers to those learners who were still on course at a point in time.

Partial Completions

Learners who have completed more than 25 per cent but less than 90 per cent of a course and its requirements in 2024.

Post-secondary non-tertiary

This refers to Post Leaving Certificate NFQ Level 4 or 5, Advanced Certificate NFQ Level 6, other non-NFQ aligned FET, Certificate NFQ Level 4, or Certificate NFQ Level 5.

Short-cycle tertiary education

This refers to third level non-degree courses and includes higher certificate NFQ level 6 courses and diploma NFQ level 7 courses. These courses are usually of one year in duration and are often vocational in nature.

Third Level

This refers to Ordinary Bachelor degree, Honours Bachelor degree, Professional, Post-Graduate, Doctorate or Higher degree courses.



For further information, please contact:

Data Analytics Unit, SOLAS
Block 1, Castleforbes House
Castleforbes Road, Dublin 1
solasdataanalytics@solas.ie

[SOLAS.ie](https://www.solas.ie)