



# DEKO FG Silent

Fully glazed partition with high sound reduction

Slim, single layer fully glazed partitions with a sound reduction of up to Rw 53 dB in an elegant aluminium design. DEKO FG Silent can be installed as whole glazed partitions with full-height glass or as glazed sections in concrete or drywalls.

## The partition

DEKO FG Silent is available with DEKO FG Silent aluminium profiles against adjoining structures, sound rated glass and narrow black fire seals running vertically between the glazed elements. All aluminium profiles for fully glazed partitions are supplied as standard in natural anodised aluminium - but can also be supplied powder coated in other colours as required.

To achieve a more effective level of sound reduction, the DEKO FG Silent is made of 42,76 mm sound rated safety glass. The glazed partition is also available in other glass thicknesses depending on the required level of sound reduction. As an alternative to DEKO FG Silent, partitions are available as double glazed DEKO GV glazed partitions that provide a sound reduction of up to Rw 47 dB.

## Doors

Depending on the required sound reduction, the DEKO FG Silent fully glazed partition can be fitted with DEKO DG double glazed doors or our solid timber doors. Both door types are installed in our aluminium frames.

## Decoration

Film with striped or patterned designs or text can be added to DEKO FG Silent - as it can to all DEKO's glazed partitions - to give the whole interior a uniform look.



DEKO partitions llp  
Maarkaervej 11  
DK-2630 Taastrup

Tel: +45 43 55 77 11  
[www.deko.com](http://www.deko.com)

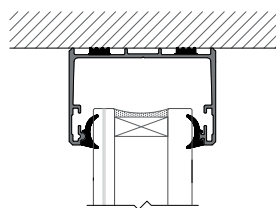


## Type summary

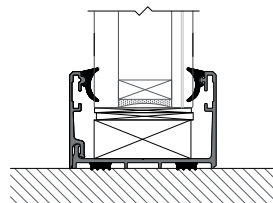
Product	Connection type	Sound insulation	Partition thickness	Glass thickness	Glazed panels	Weight	Fire resistance
DEKO FG Silent	Profile	Rw 46 - 53 dB <sup>1</sup>	61 mm	40,76 - 42,76 mm	1	50 kg/m <sup>2</sup>	Unclassified
DEKO FG Silent	Black	Rw 46 - 53 dB <sup>1</sup>	61 mm	40,76 - 42,76 mm	1	50 kg/m <sup>2</sup>	Unclassified

1) The airborne sound insulation of the glazed element depends, among other things, on the type of glass installed.

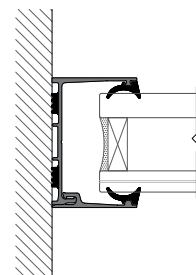
## Details



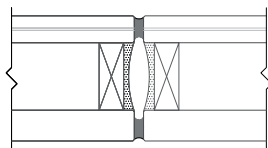
CEILING CONNECTION



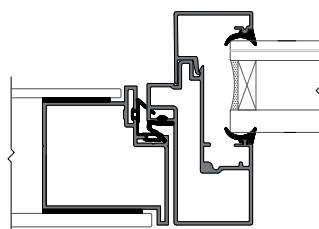
FLOOR CONNECTION



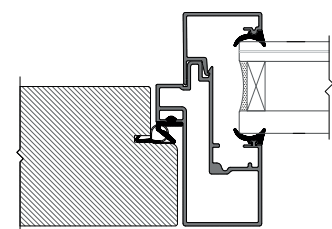
WALL CONNECTION



JOINT



DEKO DG - DOUBLE GLAZED DOOR



DEKO TD - SOLID TIMBER DOOR

For updated values and details, visit [deko.com](https://deko.com)