

Quick User Guide Avantree Apico Mini Bluetooth Earbud Model: AH8M



Scan me for warranty registration

English ----- 01
Deutsch ----- 02
Français ----- 03
Italiano ----- 04
Español ----- 05

Model No.: BTBS-AH8M
www.avantree.com

Any questions? Contact:

Support@avantree.com

(Response Time: 1 working day)

Self-service Support:

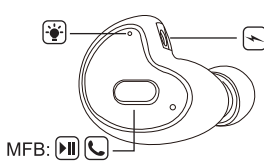
- More FAQs on support.avantree.com
- 100+ Step by step video Guide – youtube.com/avantree/playlists

Telephone Support (Mon-Fri):

- USA / CANADA +1 800 232 2078
- EU / Asia telephone No. refer to http: //www.avantree.com/contact-us

Product Overview

Produktübersicht | Vue d'ensemble | Panoramica del prodotto | Presentación del producto



EN

1. Basic operations

Function (MFB)	Operation	LED indication
Power ON	Press and hold the MFB for about 2s	LED flashes BLUE for 3 times
Power OFF	Press and hold the MFB for about 2s	LED lights on RED then turns off
Pair with a new device	From off status, press and hold the MFB for about 3s to enter pairing mode	LED flashes BLUE & RED alternately
Play / Pause	Press the MFB once	N / A
Clear pairing history	From off status, press and hold the MFB for about 10s	Please do not release until you see RED LED turn off

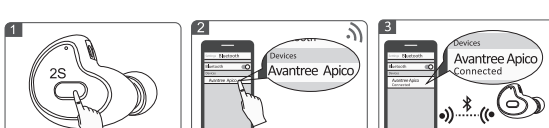
2.Charging

Before first use, Please ensure to fully charge the earbud.

You can charge it via the supplied micro USB cable to your own USB chargers (phone charger, wall charger/travel charger, etc.) with 5V/500mA~2A, or PC/TV USB port. LED will stay RED when charging and turn off when fully charged. It normally takes about 1.5 hours for fully charge.

When you hear voice prompt “battery low” and the LED flashed RED, you should recharge your earbud.

3.Connect with mobile device for the first time



Step 1. From OFF status, Press & hold the MFB for about 2 seconds until the BLUE LED flashes 3 times. Then it will go to pairing mode automatically – LED flashes BLUE & RED alternately

Step 2. Activate Bluetooth on your device. Search & select “Avantree Apico” to connect it.

Step 3. Now Apico is connected.

4.Pair and connect with a new device

Step 1. From OFF status, press & hold the MFB for about 3 seconds until LED flashes BLUE & RED alternately.

Step 2. Please repeat Step 2 & 3 in Part 3.

5.Reconnect

The next time you turn on the Apico it should automatically reconnect to your phone. If fail to reconnect, please select “Avantree Apico” on your phone to manually reconnect it.

6.FAQ

1. I can't connect it with my phone. What should I do?

Please clear its pairing history – From OFF, Press and hold the MFB about 10s until LED lights on RED then turns off. And then repeat steps on part 3.

2. The working time is far less than the described 3 hours.

It can last up to 3 hours per charge at 60-70% volume. If you use it in a noisy environment, e.g. driving motorcycle, the highest volume can only last about 1.5 hours. If it is far behind 1.5 hours, please contact support.avantree.com.

3. Caller cannot hear me well.

Due to its mini size and mechanical structure, this earbud is ideal for audio listening rather than making phone calls. This earbud is NOT RECOMMENDED for phone calls, especially outdoors in a noisy environment.

WARNINGS / CAUTIONS

- Permanent hearing loss may result from long-term exposure to sound at high volumes.
- This product contains small parts which may be a choking hazard. Not suitable for children under age
- To reduce the risk of fire or electrical shock, do NOT expose this product to rain, liquids or moisture.
- Do NOT make unauthorized alterations to this product.
- Do NOT expose products containing batteries to excessive heat (e.g, direct sunlight, fire, etc.).
- Do not leave a fully charged battery connected to a charger; overcharging may shorten its life.

Declaration of Conformity

CE: The product is in conformity with the essential requirements of Article 3,1 (a) (b), 3,2 of Directive 1999/5/EC and the essential requirements of Directive 2004/108/EC.

FCC: This device complies with part 15 of the FCC Rules. Operation is subject to the condition that this device does not cause harmful interference (1) this device may not cause harmful interference, and (2) this device must accept any interference received, including interference that may cause undesired operation. Changes or modifications not expressly approved by the party responsible for compliance could void the user's authority to operate the equipment. NOTE: This equipment has been tested and found to comply with the limits for a Class B digital device, pursuant to Part 15 of the FCC Rules. These limits are designed to provide reasonable protection against harmful interference in a residential installation. This equipment generates, uses and can radiate radio frequency energy and, if not installed and used in accordance with the instructions, may cause harmful interference to radio communications. However, there is no guarantee that interference will not occur in a particular installation. If this equipment does cause harmful interference to radio or television reception, which can be determined by turning the equipment off and on, the user is encouraged to try to correct the interference by one or more of the following measures: -- Reorient or relocate the receiving antenna. -- Increase the separation between the equipment and receiver. -- Connect the equipment into an outlet on a circuit different from that to which the receiver is connected. -- Consult the dealer or an experienced radio/TV technician for help. FCC ID: 2A1TF-BTBS-AH8

To maintain compliance with FCC's RF Exposure guidelines, this equipment should be installed and operated with minimum distance between 20cm the radiator your body: Use only the supplied antenna.