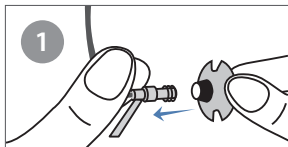




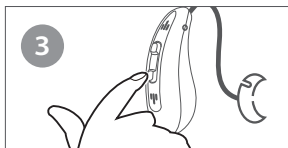
Quick Start Guide



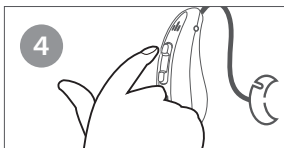
Choose the appropriate ear tip size and attach to the hearing aid.



Put on the hearing aid. (refer to the Manual for details)



Turn on the device by holding the bottom button until beep.

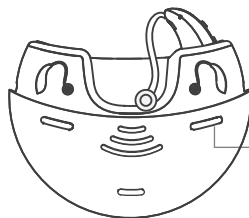


Short press the top button to increase the volume to a comfortable level*.

*11 levels available, with 3 beeps at max volume

Precautions after Use

1. Always turn off the hearing aids before placing them back into the charging case.
2. Ensure that they are properly and securely placed into the charging case until the orange light appears.



Orange light: Charging
Green light: Fully Charged
Light off: Not Charging

Care and Cleaning

95% of hearing device problems are caused by excessive ear wax blocking the ear tube and other small parts. It is highly recommended that you **clean the tube and ear dome of your device every other day** to maximize functionality.