



User Manual

Wireless Music Receiver

Roxa Plus



Scan for video user guide

www.avantree.com

English

Contents

1. AptX Low Latency	1
2. Product overview	2
3. What's in the box?	2
4. Pairing and connecting	3
4.1. Connecting to a mobile phone/tablet	3
4.2. Connecting to a Bluetooth transmitter	4
5. Reconnecting	5
6. LED indications	5
7. How to get the maximum range	6
8. Product Specifications	7
9. Safety information	8

1. AptX Low Latency

Avantree Roxa Plus is a Bluetooth audio receiver incorporating the latest "aptX low latency" technology, for CD-like quality sound and with virtually no audio delay. It is ideal for games, watching TV and movies without Lip sync delay.

aptX® Low Latency

To take advantage of the better performance offered by APTX Low latency codec, the other device must also support the same codec (Such as Avantree's Saturn Pro, Priva II, Leaf, etc). If the transmitter only supports the normal AptX codec, or the SBC one, these codecs will be used instead.

Audio delay by transmitter type:

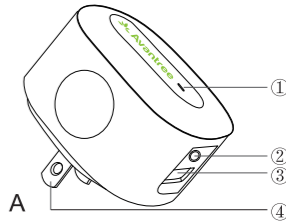
Transmitter support -	The audio delay will be
aptX Low Latency codec	Around 40ms
aptX codec	Around 180ms
SBC codec (most standard Bluetooth audio)	Around 250ms

- 1 -

English

2. Product overview

- 1) LED indicator
- 2) 3.5 mm audio socket
- 3) 5V/1A USB charging port
- 4) AC plug(US / EU / UK Pin optional)



3. What's in the box?

- A. Avantree Roxa Plus
- B. 3.5mm to 3.5mm audio cable
- C. 3.5mm to RCA audio cable
- D. User manual



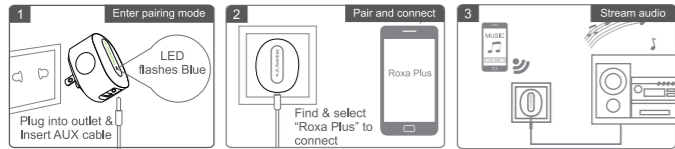
- 2 -

English

4. Pairing and connecting

4.1. Connecting to a mobile phone/tablet

- Step 1. Power on** - plug Roxa Plus into AC outlet, the LED will light to RED.
- Step 2. Activate Bluetooth(Entering pairing mode)** - plug 3.5mm audio cable into Roxa Plus, LED shows BLUE for 1 second and Roxa Plus will go into pairing mode automatically after 5 seconds - LED flashes BLUE every 5 seconds.
- Step 3.** Plug the other end of 3.5mm audio cable or RCA cable into your home sound system.
- Step 4.** Active Bluetooth on your phone/tablet, search and select " Roxa Plus" to pair and connect. Once connected, the LED of Roxa Plus will light up BLUE. Then you can enjoy music wireless.

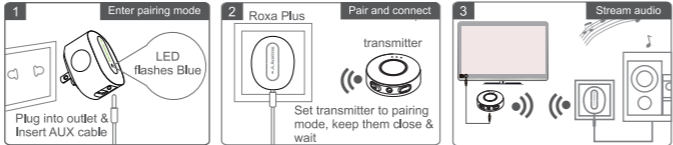


Note: If you want to connect to second phone/tablet, please disconnect the first device.

- 3 -

4.2. Connecting to a Bluetooth transmitter

- Step 1. Power on** –plug Roxa Plus into AC outlet, the LED will light to RED.
- Step 2. Activate Bluetooth and get Roxa Plus into pairing mode-** plug 3.5mm audio cable into Roxa Plus and after 5 seconds, Roxa Plus will go into pairing mode automatically- LED flashes BLUE every 5 seconds.
- Step 3.** Plug the other end of 3.5mm audio cable or RCA cable into your home sound system.
- Step 4.** Power on and set your Bluetooth transmitter to **PAIRING MODE**
- Step 5.** Keep the devices close and wait for 5~30 seconds. Once connected, the LED of Roxa Plus will light up BLUE. Then you can enjoy music wireless.



***PARING MODE:** Discoverable mode for Bluetooth device, normally the LED blinks quickly or flashes between two colors alternately.

- 4 -

5. Reconnecting

For phone/tablet, once disconnect, please select and tap "Roxa Plus" from the Bluetooth device list on your phone /tablet to reconnect manually.

For transmitter, once disconnect, please power on your transmitter or press MFB(multifunctional button) once on transmitter again and set to pairing mode.

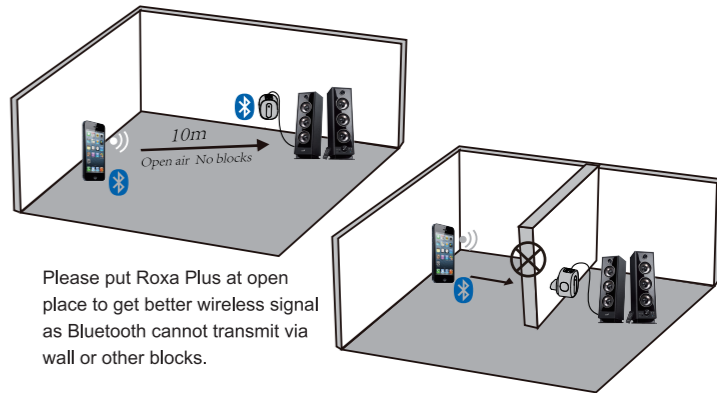
6. LED indications

Status of Receiver	LED indicator
Powered on but Bluetooth not activated	LED shows steady RED
Activate Bluetooth	LED shows BLUE for 1 second
Pairing mode and disconnect	LED flashes BLUE every 5 seconds
Connected	LED shows steady BLUE

- 5 -

English

7. How to get the maximum range



Please put Roxa Plus at open place to get better wireless signal as Bluetooth cannot transmit via wall or other blocks.

- 6 -

English

8. Product Specifications

Specifications

Wireless receiver

- BT version: 4.2
- Support profile: A2DP
- Support codec: SBC, aptX and aptX Low Latency.
- Operational range: Class II, up to 10 meters

AC Power

- Input voltage: AC100-240V 50/60Hz
- USB output voltage/Current: 5V/1000mA
- Main body size without AC plug: 54*45*26mm
- Product weight: around 55g

- 7 -

9. Safety Information

- To avoid any damage or malfunction of the device, do not drop the device from a height.
- Keep this device away from humidity, water and any other liquids. If the device is exposed to water, moisture or other liquid, do not operate the device to avoid risk of electric shock, explosion and damage to the device or injury to yourself.
- Do not place or keep this device near any heat source, such as direct sun light, radiators, stoves or other apparatus which produces heat. This may cause explosion, degrade the performance of the device and/or reduce battery life.
- Do not attempt to modify, repair or disassemble this device yourself (Especially the battery: This may cause an explosion). Attempting this will void the warranty.
- Do not place heavy objects on the device.
- Use only supplied and approved charger.
- Replacement or service must be done by qualified service center or manufacturer.
- Unplug this device when unused for long periods of time or during lightning storms.

- 8 -

Video user guide on Youtube

Step-by-step tutorial and FAQs on support.avantree.com

Telephone support: booking from Avantree.com

Email support: support@avantree.com (24hrs Reply Guaranteed)

Dispose of the packaging and this product in accordance with the latest provisions.



- 9 -

English



www.avantree.com
support@avantree.com
Avantree US Customer Service Line: 800 232 2078
Avantree Europe Customer Service Line: +1 408 600 0579
Z-PKMN-RC300L-V1