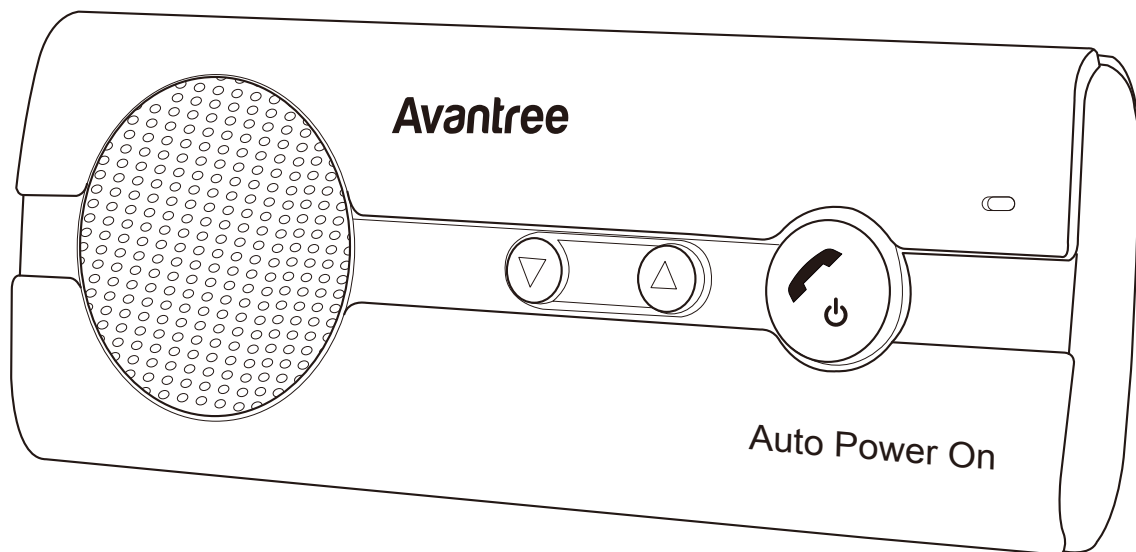


User Manual

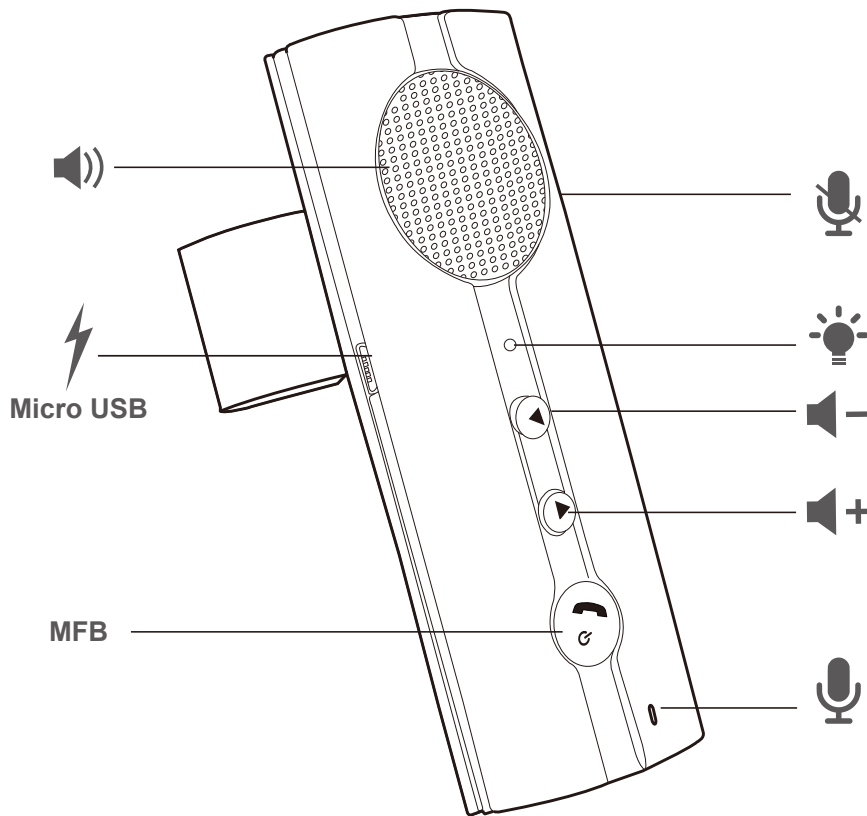
Wireless Car Kit

BTCK-10BS



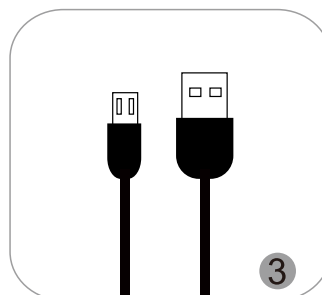
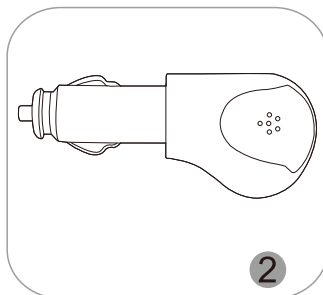
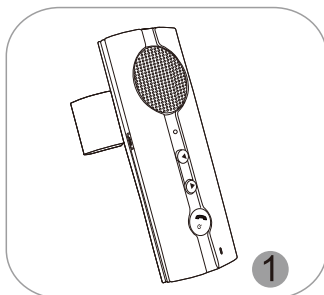
Product Overview	1
What's In the Box	1
Basic Operations	2
Set Up	2
"Auto Power On/Off" function	3
Pairing a mobile phone	3
To add another phone (multipoint function)	4
Reconnection	4
Restore to default settings	5
How to charge	5
Troubleshooting	6

Overview









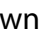

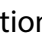
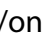





What's In the Box

1. Avantree 10BS
2. USB car charger
3. USB charging cable
4. Sun-visor clip

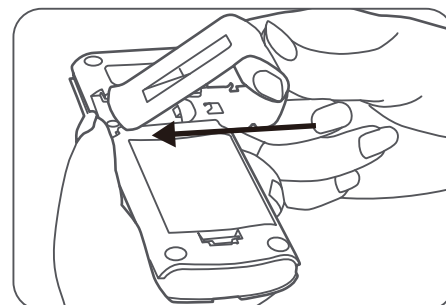
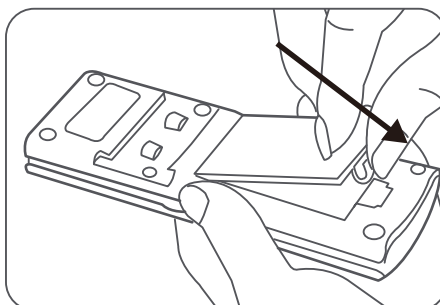
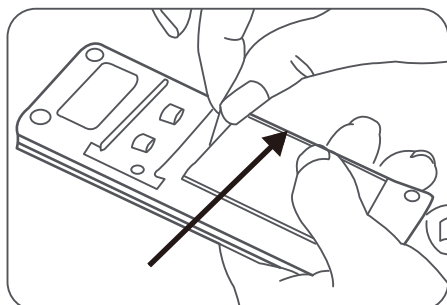


Basic Operations

Button	Function	Operation
	Power on / off	Press and hold  for 4s
	Answer a call	Press  once
	Reject a call	Press and hold  for 2s
	End a call	Press  once
	Voice dialing (phone feature)	Press  once
	Re-dialing	Double click 
	Volume up / down	Press  /  once
	Multipoint function off/on	Press and hold  /  for 3 seconds
Mute button	Mute/Un-mute the microphone	Press Mute button once (during a call)
	Transfer calls between 10BS and mobile phone	Press  and  together (during a call)

Set Up

Remove the Insulating sheet / Install the battery / Install sun-visor clip



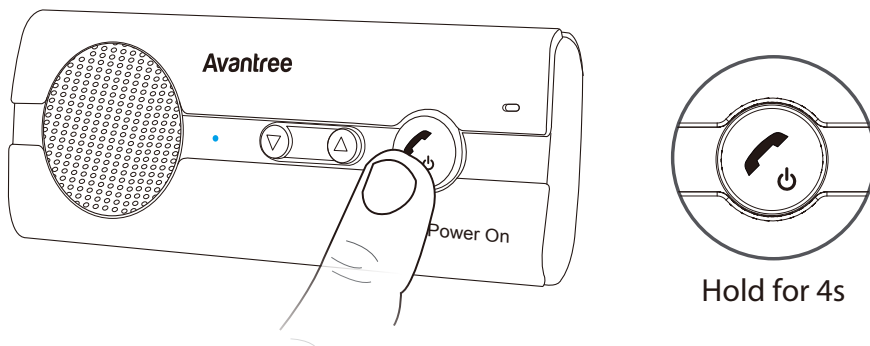
“Auto Power On/Off” function

10BS comes with motion sensor. It will auto power on when it detects any motion (e.g. opening the car door) and will auto power off after disconnect over 10 minutes.

How to enable/disable the function

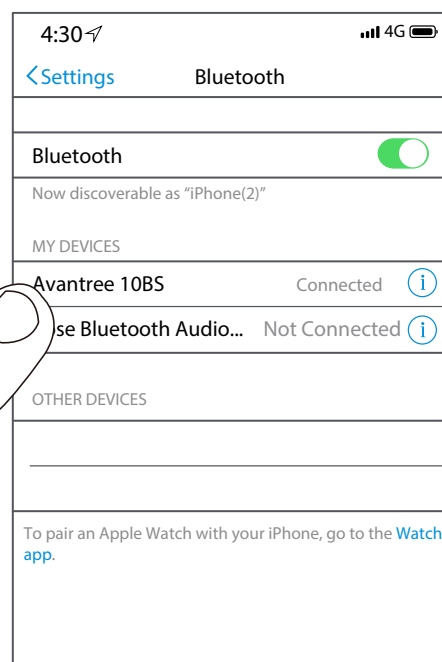
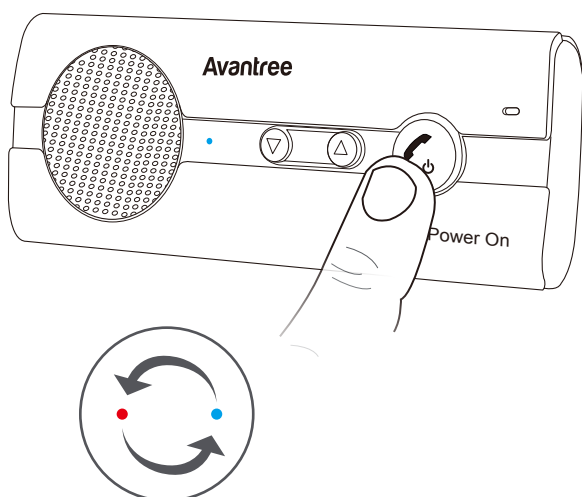
Manually power on/off the car kit by pressing and holding the MFB for 4 seconds, will enable/disable this function.

Note: If you want to use auto power on function, please do NOT power off the car kit manually.



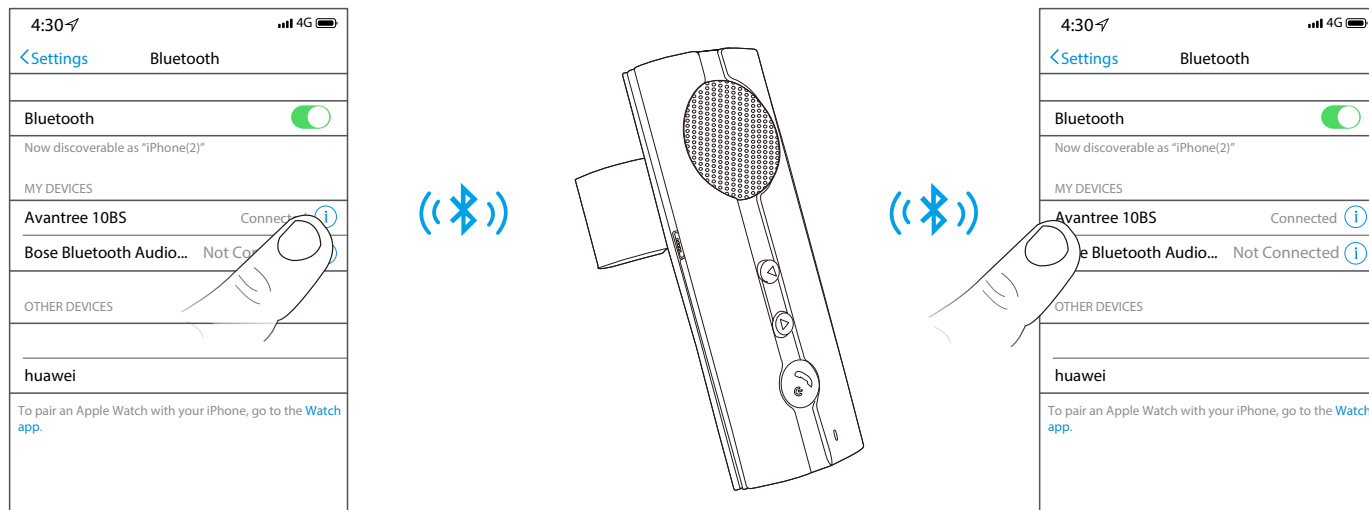
Pairing a mobile phone

1. Set 10BS to PAIRING MODE - From off status, press and hold the MFB button for 7 seconds until LED indicator flashes **BLUE** and **RED** alternately.
2. Activate Bluetooth on your phone; search and select, "Avantree 10BS" to connect.



To add another phone (multipoint function)

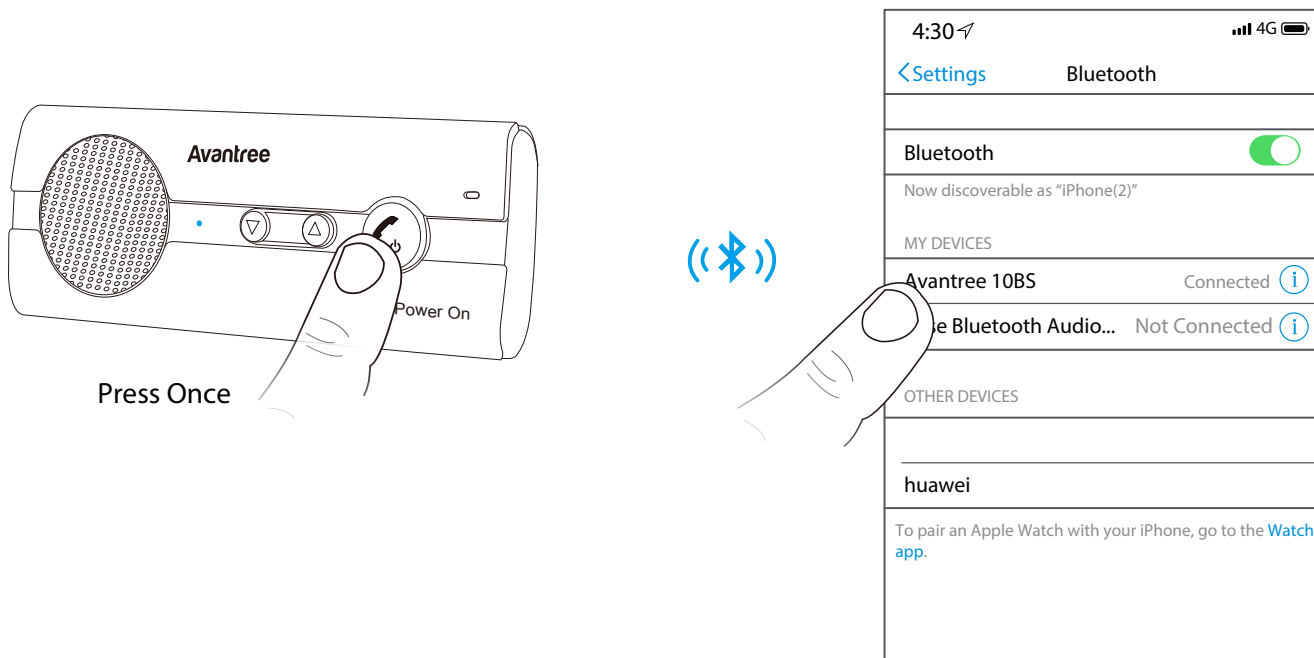
1. Pair and connect the 10BS with the first phone as above.
2. Power off the 10BS, set 10BS into PAIRING MODE as above to pair and connect the 2nd phone.
3. Power off and power on 10BS again. It will automatically connect with the two phones. If not, you may need to manually tap "Avantree 10BS" on your phone to connect.



Reconnection

Normally, the 10BS will automatically reconnect the last 1 paired device once it's power on. For other devices, you may need to manually click "Avantree 10BS" on your phone to reconnect.

Note: To ensure the success of auto re-connection with 2 devices (including the last 1 paired device), please activate Bluetooth on the 2 phones before opening the car door.

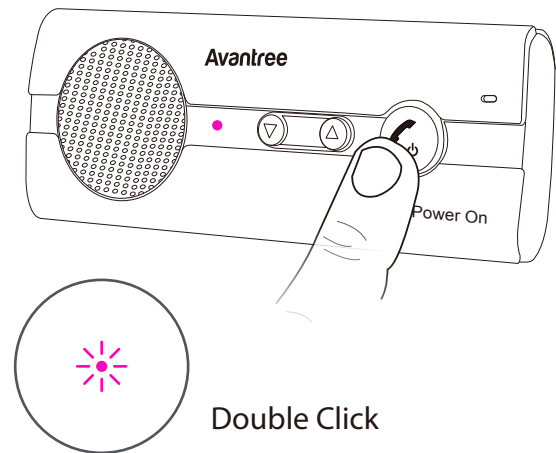
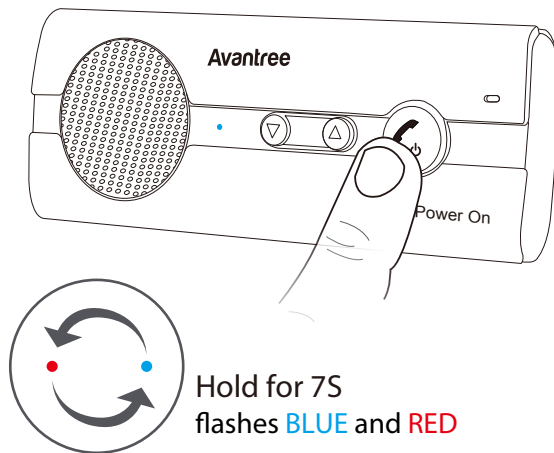


Restore to default settings

You may find it necessary to reset the 10BS if it is not working as expected. After it is reset to factory default settings, all the paired mobile phone information will be erased.

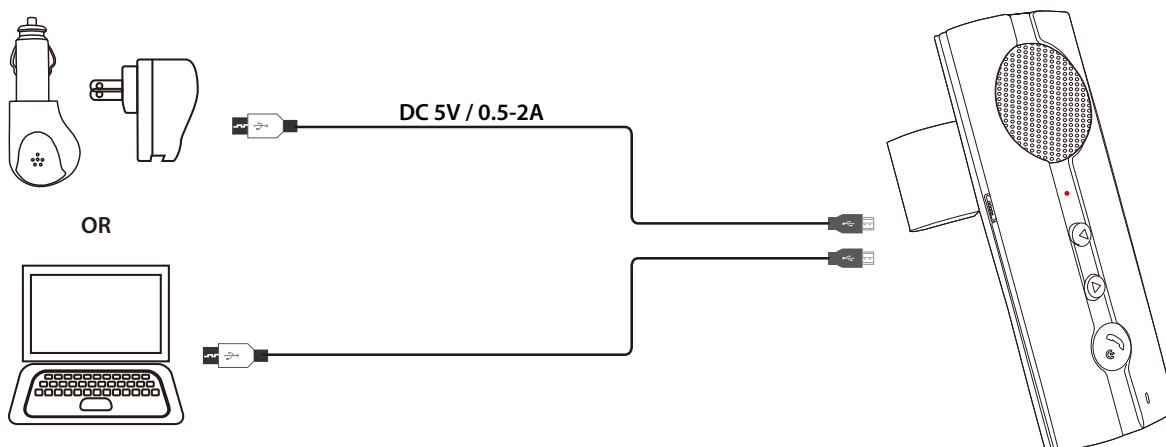
1. Set 10BS to PAIRING MODE - From off status, press and hold the MFB button for 7 seconds until LED indicator flashes **BLUE** and **RED** alternately.
2. Double click the MFB button - you will see LED flashes **BLUE** and **RED** together very quickly about 2 times and then 10BS will turn off automatically.

Note: For successful connection, please also delete the paired information from your phone and re-pair with 10BS.



How to charge

When the LED flashes **RED** every 6 seconds, you should fully recharge the device for about 3 hours. The LED will remain RED while charging and then turn off when charging is complete. You can plug the 10BS into a USB wall charger/car charger (DC 5V / 0.5-1A) or computer USB port that is powered on.



Troubleshooting

1. 10BS won't auto power on when I enter the car?

Please make sure you DID NOT MANUALLY POWER OFF THE CAR KIT. Doing so will disable the "auto power on" function. Details please refer to "Auto Power On/Off" function chapter.

2. 10BS continuously beeps while driving?

The 10BS comes with motion sensor. It will auto power on when it detects any motion (e.g. opening the car door). Once it powers on, it will BEEP and try to auto-reconnect with the last paired mobile phone. If not successful, it will auto power off after 10 minutes and BEEP again. Please make sure your phone's Bluetooth is activated, or you may need to disable the Auto Power On function (refer to "Auto Power On/Off" function chapter).

3. 10BS can't pair and connect with 2 devices at the same time?

If 10BS fails to connect two phones, please confirm the multipoint function is on. While in standby mode, press and hold the "V-" / "V+" buttons for 3s until you hear a beep to turn on/off the Multipoint function.