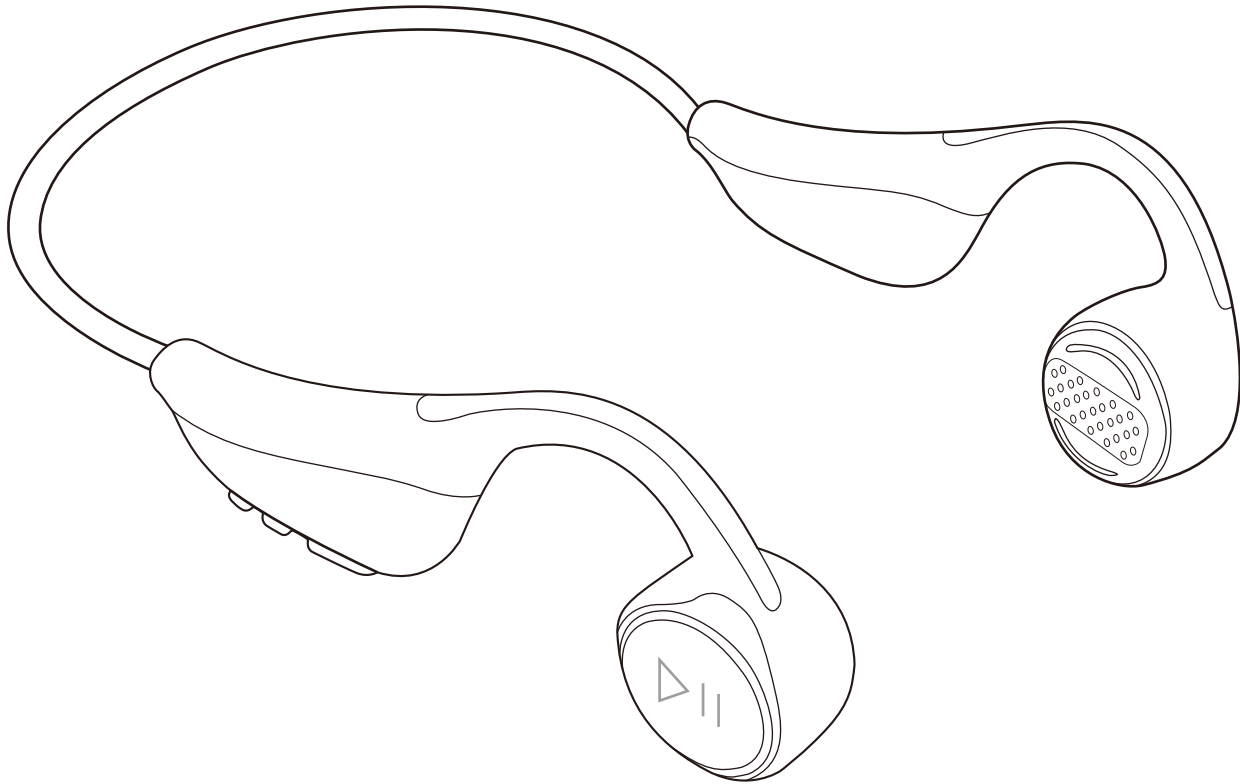


User Manual

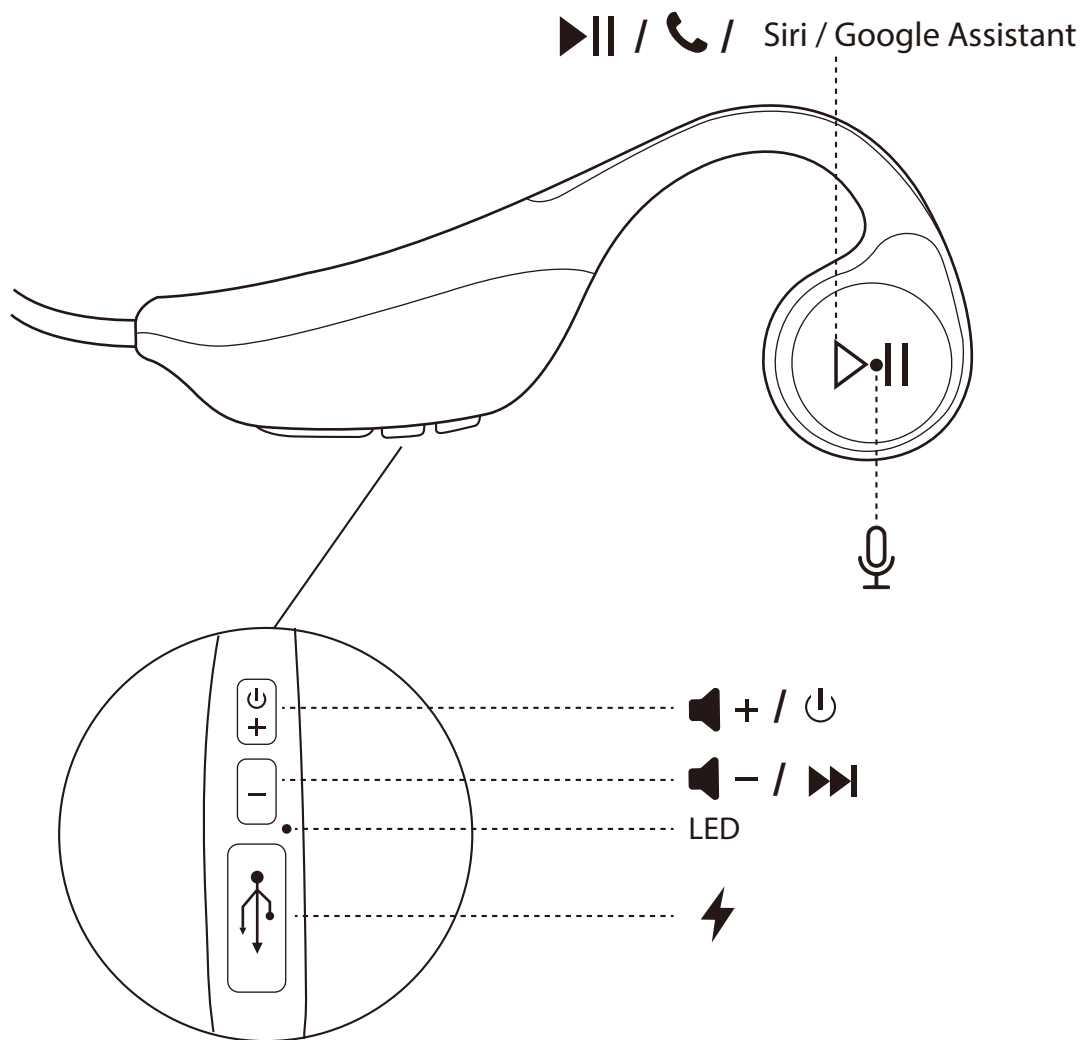
BONE CONDUCTION HEADPHONE

Model No.: BTHS-136

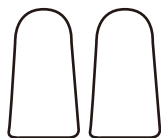


Product overview	1
Included accessories	1
How to charge	2
Basic operations	2
LED Indications	3
How to pair	4
How to Factory Reset	7
Support	7
FAQ	7
How to take care of your HS136	7

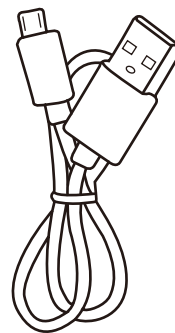
Product Overview



Included accessories



Memory foam eartips

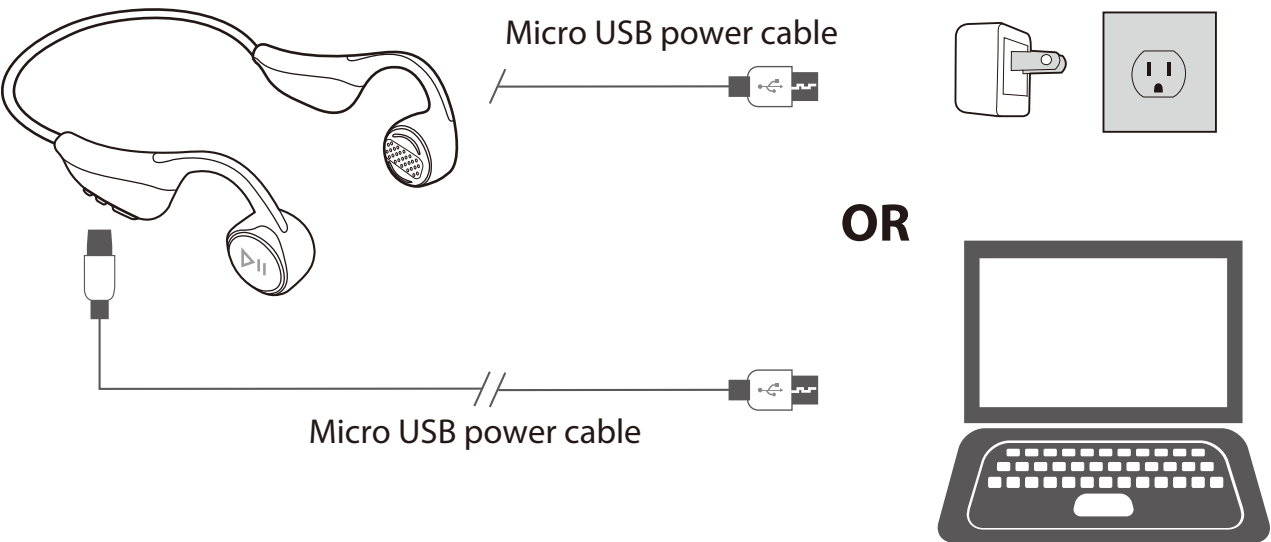


Micro USB Charging cable




How to charge




When the LED indicator starts to flash **RED** and you hear the “battery low” voice prompt, you should charge the device. The LED will remain **RED** while charging and automatically turn off when the charging is complete. It takes about 2 hours to fully charge it.

You may use a USB wall charger (**DC 5V / 0.5-2A**) or any USB port that is powered on.
(Note: The headset will automatically turn off about 30 minutes after the first low battery warning.)



Basic operations

Function	Operation
General function	
Power ON	Press & hold  for about 2 seconds until LED flashes BLUE briefly
Power OFF	Press & hold  for about 5 seconds until LED flashes RED briefly
ENTER PAIRING MODE	From off status, press & hold  for about 5 seconds until LED flashes BLUE and RED alternately

Music control	
Play / pause music	Double tap ▷
Volume up	Short press 
Volume down	Short press 
Next track	Long press 
Call control	
Answer / end a call	Double tap ▷
Reject a call	Long press ▷
Activate voice assistant – Siri / Google Assistant (Phone feature)	Long press ▷


LED Indications

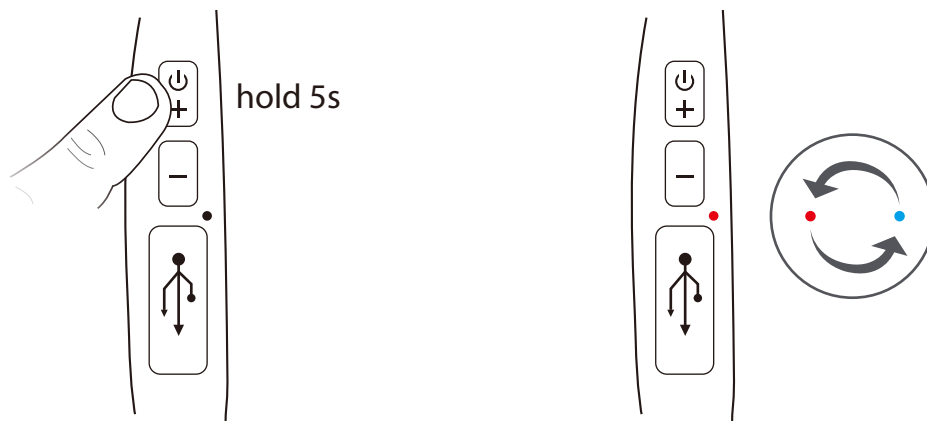
Headset Status	LED indicators
Ready to pair	Flashes BLUE and RED alternately
Connected	Flash BLUE once every 5 seconds
Disconnected	Flash BLUE once every 3 seconds
Battery low	Flash RED once every 5 seconds
Charging	Solid RED
Fully charged	RED light turns off

How to pair

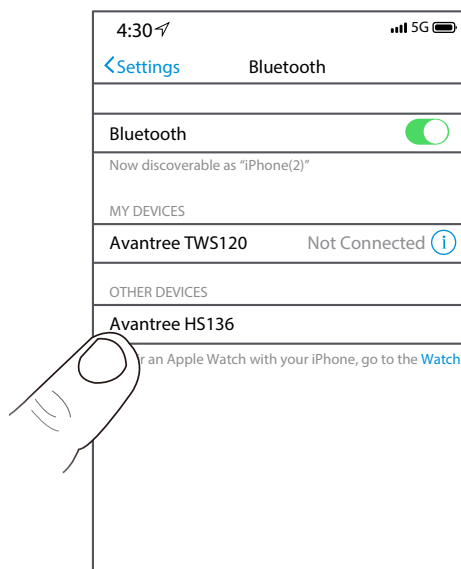
Connect to mobile device

Note: The HS136 will enter pairing mode automatically when powered on for the **FIRST TIME**. For non-first-time use, please follow the steps below to manually enter **PAIRING MODE**.

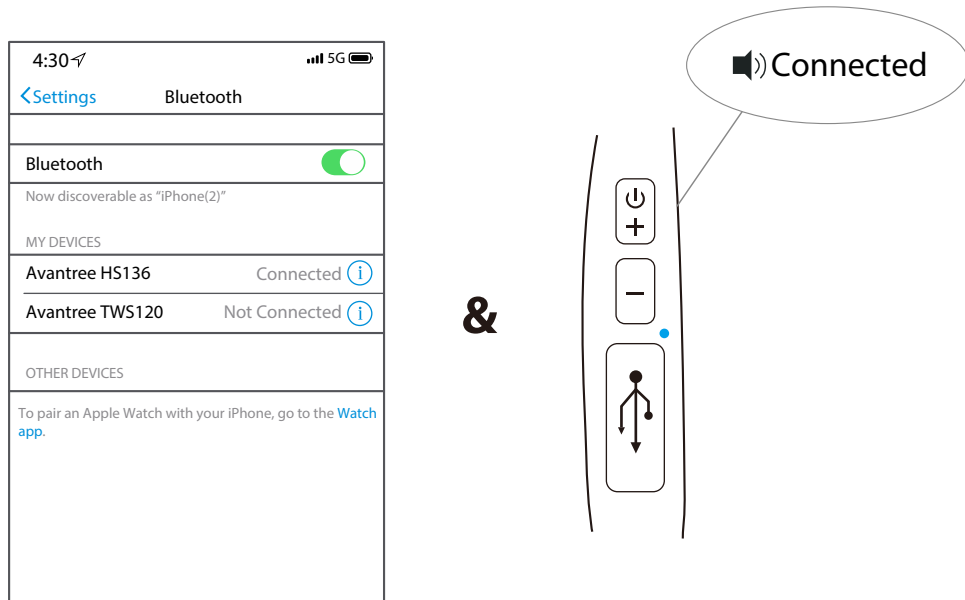
- **Set headset to PAIRING MODE** - From off status, hold  for about 5 seconds until LED flashes **BLUE** and **RED** alternately.




- Activate Bluetooth on your device; search and select “Avantree HS136” to connect.



- Once connected, LED will double-flash **BLUE** every 4s. You will hear “Connected”. Now you can start streaming audio.




Reconnect

The HS136 should automatically reconnect to the **MOST RECENTLY CONNECTED** device upon powering on. If not, please click  once or select “Avantree HS136” on your Bluetooth device to manually reconnect.

Connecting with a TV

Connecting to a Bluetooth TV

Step 1: Enter Pairing Mode on the Headphones.

Make sure that the headphones are off. From there, hold  for about 5 seconds until the LED indicator alternates between flashing **RED** & **BLUE**.

Step 2: Enter Pairing Mode on your TV.

Different TV brands/models may have different ways of connecting to Bluetooth devices. Please refer to your TV's user manual for a more detailed walk-through. Here are some examples...

Samsung SMART Bluetooth-enabled TV reference -

<https://www.samsung.com/us/support/answer/ANS00062502/>

- Press the **Home** button on your remote.
- Navigate to **Settings > Sound > Sound Output**.
- Select **Speaker List**.
- Select "**Avantree HS136**" to connect. Note: If the TV cannot detect your headphones, move the device closer to the TV.
- Select **Pair and connect**.
- To complete the connection, select **OK**.

LG SMART Bluetooth-enabled TV reference -

<http://www.lg.com/us/support/mobile/bluetooth-guided-setup>

- Select the **Settings** icon.
- Select **Advanced Settings**.
- From the **Sound** menu select **Sound Out**.
- Select **LG Sound Sync Bluetooth** from the list, then select **Detect**.
- Choose "**Avantree HS136**" from the list to pair.

Connecting to a Non-Bluetooth TV

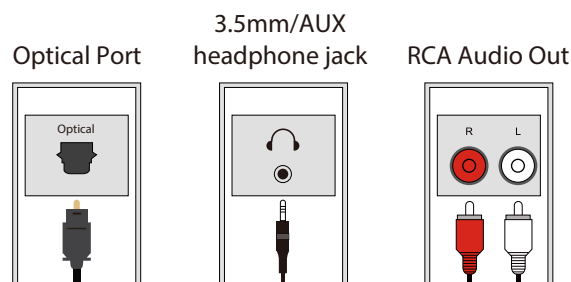
If your TV does not have built-in Bluetooth capabilities, you'll need to purchase a Bluetooth Transmitter in order to connect your headphones to your TV.

Avantree offers a variety of Bluetooth transmitters: [Oasis Plus](#), [Audikast Plus](#), [TC419](#)... etc. You may pick the one that's suitable for your current devices.

Below is a set of simplified instructions on how to connect your headphones to a non-Bluetooth TV. You may refer to your transmitter's user manual for a more detailed walk-through.

Step 1: Connect your Transmitter to your TV.

Most TVs nowadays offer at least one of the options below; you may use the one that's suitable for your TV.



Step 2: Bluetooth Pair your HS136 to the Transmitter.


Enter your Transmitter into pairing mode (please refer to your transmitter's user manual if you're not sure how.)

Make sure that the headphones are off. From there, hold  for about 5 seconds until the LED indicator alternates between flashing **RED** & **BLUE**.

Step 3: Adjust Sound Settings on your TV.

Make sure that the audio output is set to the right format.

How to Factory Reset

When the headset is under **PAIRING MODE**, double click  until LED flashes **BLUE** & **RED** simultaneously (LOOKS **PINK**). It will enter **PAIRING MODE** thereafter – as indicated by the LED flashing **BLUE** & **RED** alternately.

Note: Please forget / delete any Avantree HS136 from the Bluetooth list of your device before pairing with it again.

Support

FAQ

View the FAQs on <https://avantree.com/product-support/BTHS-136-GRY>.

How to take care of your HS136

- Always store the earphones inside the charging case and make sure that they are safely protected.
- The HS136 is designed to function optimally between the temperatures of 0°C and 40°C (32-100°F.) Although it can and will function beyond this temperature range, performance may be impaired.
- Avoid storing the earphones for extended periods of time without recharging them (max. three months.)
- The charging case is designed to charge using standard USB voltage (5v ± 0,25v). It is not recommended to charge this product using power supplies/sources with higher voltage.