

# MOBILITY DIFFERENCES

to be  
like me

SCIENCE, TECH, ENGINEERING, ART, MATH (STEAM)

## Universal Design

### Lauren and the Mystery Message

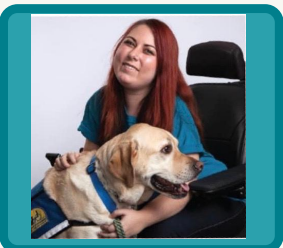
A Choose Your Own Adventure Story

Can you find your way to the end of this adventure? Our hero, Lauren, uses her experience and resources to find out who sent her a mystery message.

Read the story and then watch the video of the real Lauren. She's got a challenge for you!



FIRST - Click this link to see if you can solve the mystery



SECOND - Watch this video of Lauren talking about Universal Design

Name: \_\_\_\_\_

# Universal Design Challenge

Look around the room that you are currently in to complete the following task.

Consider the following differences/disabilities:

- *Deaf/Hard of Hearing*
- *Mobility Differences (wheelchair, walker, etc.)*
- *Blind/Vision Impaired*
- *Speech (may not communicate verbally)*
- *Intellectual Differences*
- *Limb differences (may not have or be able to use arms/legs)*

**Find three things in the room you are in that demonstrate good Universal Design. Why do you think this is a good example of Universal Design?**

**Find three things in the room that need to be re-designed or re-imagined to demonstrate improved Universal Design. List ways that you could change the item to make it accessible to more people.**

