

Sterilization, Cleaning and Maintenance

#whdentalwerk



wh.com/na

Now at
your dealer
or wh.com



Interrupting the chain of infection.

Good cleaning management is an essential part of everyday work in dental practices, because it is all about the safety of your patients, your staff and yourself.

Sterilization, Cleaning and Maintenance

COMPANY	4 – 5
REPROCESSING	
Assistina Twin	8 – 9
Assistina 301 plus	10 – 11
STERILIZATION	
Lexa	12 – 13
Accessories	14 – 15
SEALING	
Seal ²	16 - 17
WATER TREATMENT	
Multidem	18 – 19
TECHNICAL DATA AND ADAPTORS	
Technical data	20 - 21
System overview adaptors	22 - 23

People have Priority

W&H at a glance

- › Headquarters in Austria
- › 1,200 employees worldwide
- › Established in 1890 in Berlin by Jean Weber and Hugo Hampel
- › Production facilities in Austria, Italy and Sweden
- › Represented in 110 countries
- › Export share over 95%

More information
at [wh.com/na](https://www.wh.com/na)



W&H Dentalwerk
Bürmoos (A)



W&H Sterilization
Brusaporto (I)



The stakes are high.
We are working with
people.

Healthy development occurs when action is taken with foresight. This applies for sterilization, hygiene and maintenance just as it does for W&H: after all, as a family-owned company, we have been acting with the appropriate far-sightedness for generations.

The secret to our success: W&H has always focussed on people – regardless of whether they are partners, customers, patients or employees. It would only be natural for you now to ask critically: Is that really put into practice? Our suggestion: put us to the test!

Advanced Infection prevention Management Solutions

W&H AIMS provides a **step-by-step hygiene and reprocessing workflow** to interrupt the chain of infection and prolong the lifespan of instruments.



Complete product range as a holistic solution

W&H offers a wide range of products for safe reprocessing of instruments, handpieces, contra-angle handpieces and turbine handpieces following the recommended W&H AIMS hygiene workflow.



Lubrication in record time

Simple, fast, efficient.

With its innovative dual-chamber system, record time lubrication and the environmentally friendly Care Set, it impresses all along the line. The Assistina Twin has now been enhanced with an innovative adaptor solution: **Quick Connect by W&H**. This adaptor system offers you even more benefits for your everyday practice.



Assistina Twin with Quick Connect by W&H



Simple

It is the first reprocessing device which is equipped with two process chambers that can be used alternately.



Fast

W&H succeeded in decreasing the maintenance process to a record time of just 10 seconds.



Efficient

Thanks to the smart process monitoring, the Assistina Twin always achieves thorough maintenance with minimum consumption. The Assistina Twin Care Set only needs to be changed after around 2,800 instruments.



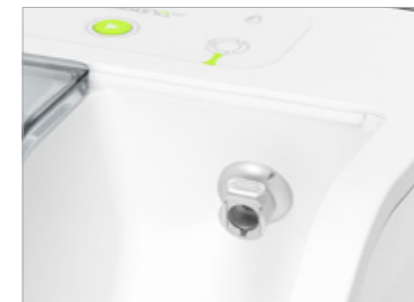
Groundbreaking technology

Thorough and comprehensive lubrication of the gear parts (orange) and cleaning of spray channels (green) thanks to innovative oil nebulization technology.



Safe

All aerosols are removed from the process chambers through active suction and an integrated HEPA filter.



Quick Connect by W&H

The Assistina Twin's innovative Quick Connect by W&H connection simplifies assembly and removal of straight and contra-angle handpieces and turbine handpieces. You can choose the appropriate adaptors for your requirements.

Maintenance at the press of a button

Simple, easy to use and safe.

The Assistina 301 plus maintenance process runs automatically: rotational lubrication, internal cleaning of spray channels, blowing through with compressed air. The instrument is perfectly maintained after only 35 seconds. The lifespan of the instruments is significantly increased.



Assistina 301 plus



Automatic rotational lubrication

The oil is optimally distributed to form an even lubricating film. Dirt particles are dislodged and removed.



Automatic oil dispenser

The system uses exactly the amount of oil required for optimal instrument lubrication. No more and no less.



Non-electrical drive

The Assistina 301 plus operates without electrical power. Only a compressed air connection is required to operate power.



Optimal cleaning

The Assistina 301 plus cleans and rinses the spray water and spray air channels with cleaning solution and dries them with compressed air.



Optimal lubrication

Cleaning and lubrication of the internal components with W&H Service Oil F1 extends the lifespan of your instruments.



For perfect manual lubrication

W&H Service Oil F1, MD-400, in the spray can is a product of W&H research.

High capacity and efficiency

Lexa offers versatile cycle program options for medium and larger loads, guaranteed by the closed-door drying process with HEPA filters and the use of fresh water for each cycle.



Lexa



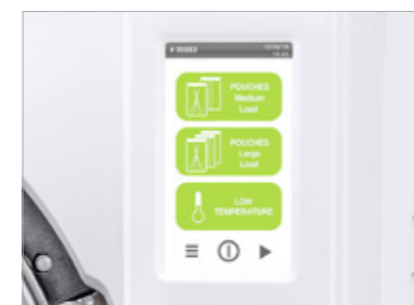
High efficiency and capacity

Lexa provides a large chamber capacity. The sterilizer comes with 4 large trays along with a unique rack providing larger loading surface and more loading options.



Customisable drying time

Lexa offers versatile program options for medium and larger loads in order to reduce overall cycle duration.



Increased usability

Due to the simple and intuitive menu interface, high-end colour touch screen and ergonomic design.



Customizable traceability system

Increased protection due to a complete and customizable traceability system including an automatic digital cycle recording on USB stick.

Accessories

Compact, practical, good.

W&H offers a wide range of accessories for optimization of the sterilization procedure. Minor extras lead to major results. Work in the dental practice becomes easier and your team saves time.



Label Printer and Sprint



Label printer

The label printer is a quick and convenient tool to link the sterilization cycle with the patient file.



Barcode scanner

The LisaSafe package includes a barcode scanner. This enables you to scan labels into the patient file.



W&H Steri App

With the W&H Steri App you are able to monitor up to 4 sterilizers in real time. The W&H Steri App enables you to recall cycle reports using the smart phone camera.



Sprint

To print out cycle protocols on thermal paper with 10-year paper warranty.

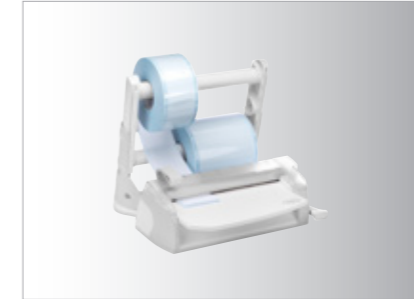
A **perfect** sealing process

Safe and secure sterilization package.

It is not easy to keep a product sterile. Only absolutely hermetic and strong protection of the sterile goods from environmental influences guarantees continuing sterility.



Seal²



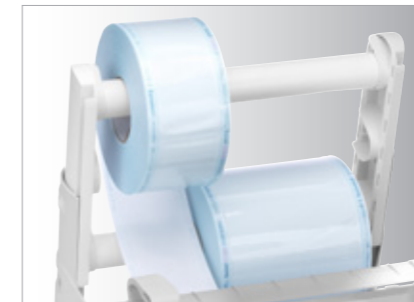
Perfect quality seals

The foil sealer creates a 12 mm wide seal in just two seconds with no risk of burning the sterilization package.



Convenient and user-friendly

Handling is optimized with this transparent sealing station and the integrated work surface.



Flexible working

The patented double-roll holder takes a wide range of widths. The roll holder can be removed from the station and mounted on the wall. This allows flexible working in the smallest spaces.

Water treatment systems

Ultrapure water for all systems.

Multidem supplies demineralized water for steam generation and can be used for many conventional sterilizers and reprocessing devices.



Multidem



User-friendly

Cartridges can be replaced fast without tools. The cartridge can be positioned without a fixing.



Compatible

Multidem is suitable for use with conventional sterilizers and reprocessing devices.



Practical

In addition, Multidem is also equipped with a spray gun and is ideal for rinsing instruments prior to sterilization.



Economical

Multidem does not require an external power supply. It has an optimized ion exchange resin.



Safe

The purified water complies with the recommendations and guidelines for the operation of steam sterilizers and for the reprocessing of instruments.

Assistina 301 plus

CE

Type:	Assistina 301 plus
Cycle time:	approx. 35 secs
Capacity of service oil container	250 ml for approx. 3,500 maintenance cycles
Capacity of cleaning solution container:	250 ml for approx. 2,500 maintenance cycles
Connection:	Compressed air connection with quick swivel coupling for air hose Ø 6 x 4 mm, 1/8" female thread
Operating pressure:	4 to 10 bar flow pressure (automatic pressure regulation)
Air consumption:	approx. 60 l/min.
Overall dimension (w x h x d):	190 x 223 x 415 mm
Weight:	2.70 kg

Assistina Twin

CE


Type:	MB-302 Assistina Twin
Process:	Cleaning of spray channels, lubrication
Suitable for:	Straight and contra-angle handpieces, turbine handpieces, air scalars, air motors
Supply voltage:	100–240 V AC
Maximum power consumption:	18 VA
Air consumption:	approx. 40 NI/min
Operating pressure:	5–10 bar (controlled via an integrated, automatic pressure controller)
Overall dimension (w x h x d):	297 x 190 x 435 mm
Weight:	3.5 kg
Capacity:	200 ml W&H Activefluid cleaning solution, 200 ml W&H Service Oil F1

Seal²

CE

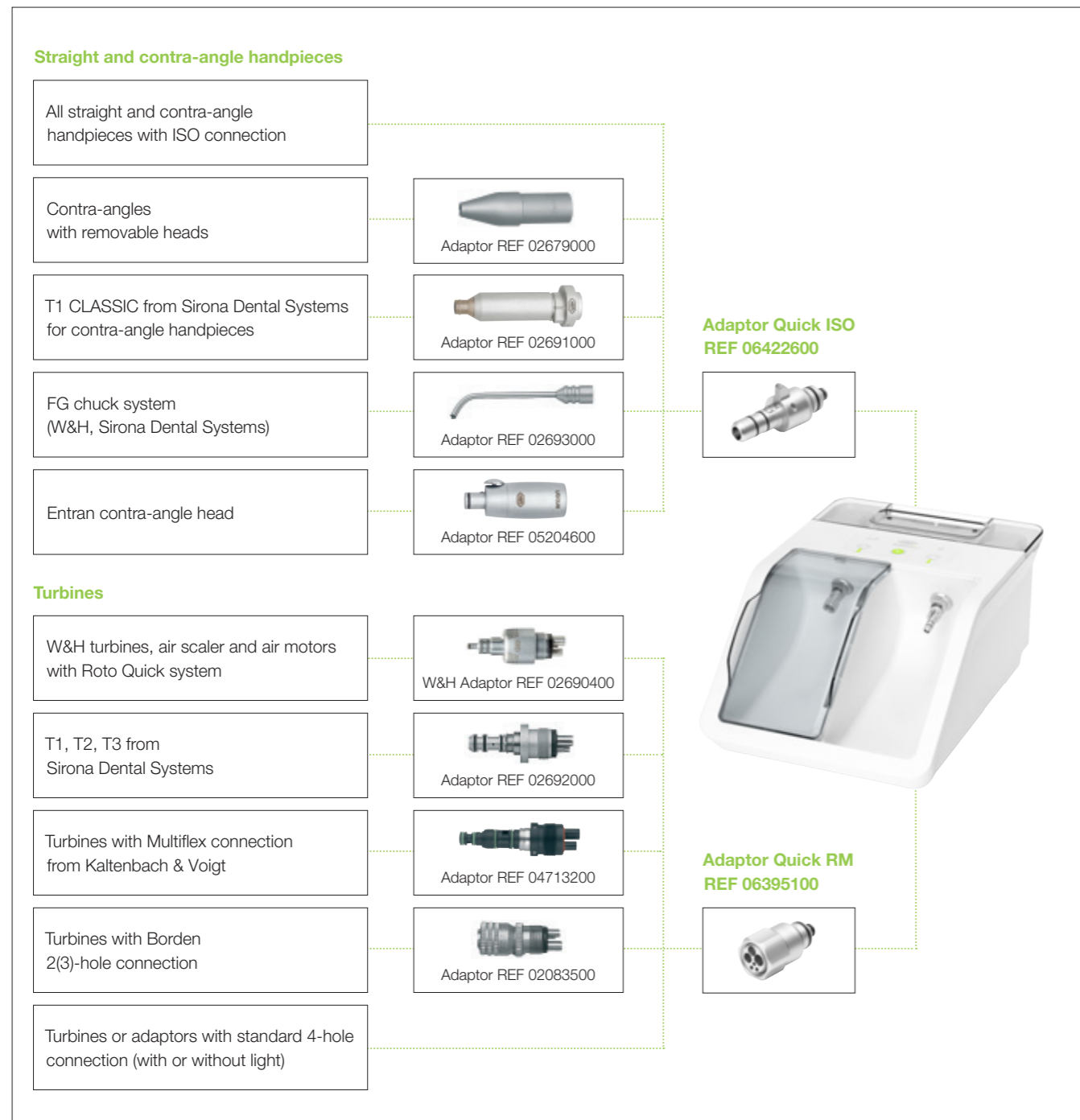
Type:	Seal²	
Voltage:	200/240 V AC; single phase	100/120 V AC; single phase
Frequency:	50/60 Hz	
Power:	180 W	
Insulation class:	I/II/III	
Fuse:	No. 2–5x 20 T4 A	No. 2–5x 20 F10 A
Terms of use:	Ambient conditions: Max. altitude: Temperature: Max. relative humidity: Max. voltage deviation: Overvoltage category: Pollution degree: Max. surge (≤ 5s): Max. surge (> 5s):	Indoor use only Altitude up to 3000 m +5/+40°C 85% ±10% II 1 230 V + 1200 V 230 V + 250 V
Power switch:	Bipolar	
Weight:	7.1 kg	
Welding area:	12 x 310 mm	
Welding temperature:	Constant	

Multidem

Type:	Multidem C27
Operating pressure:	2–8.6 bar (max.)
Water temperature (inlet):	4–30°C/40–86°F
Nominal flow rate:	60 l/h
Water quality (out):	demineralized (EN 13060)
Water quality (in):	drinking water
Weight:	2.7 kg
Overall dimensions (w x h x d):	124 x 476 x 123 mm
Operating position:	vertical
Hose lengths:	2 x 3 m
Safety valve:	yes
Backflow preventer:	

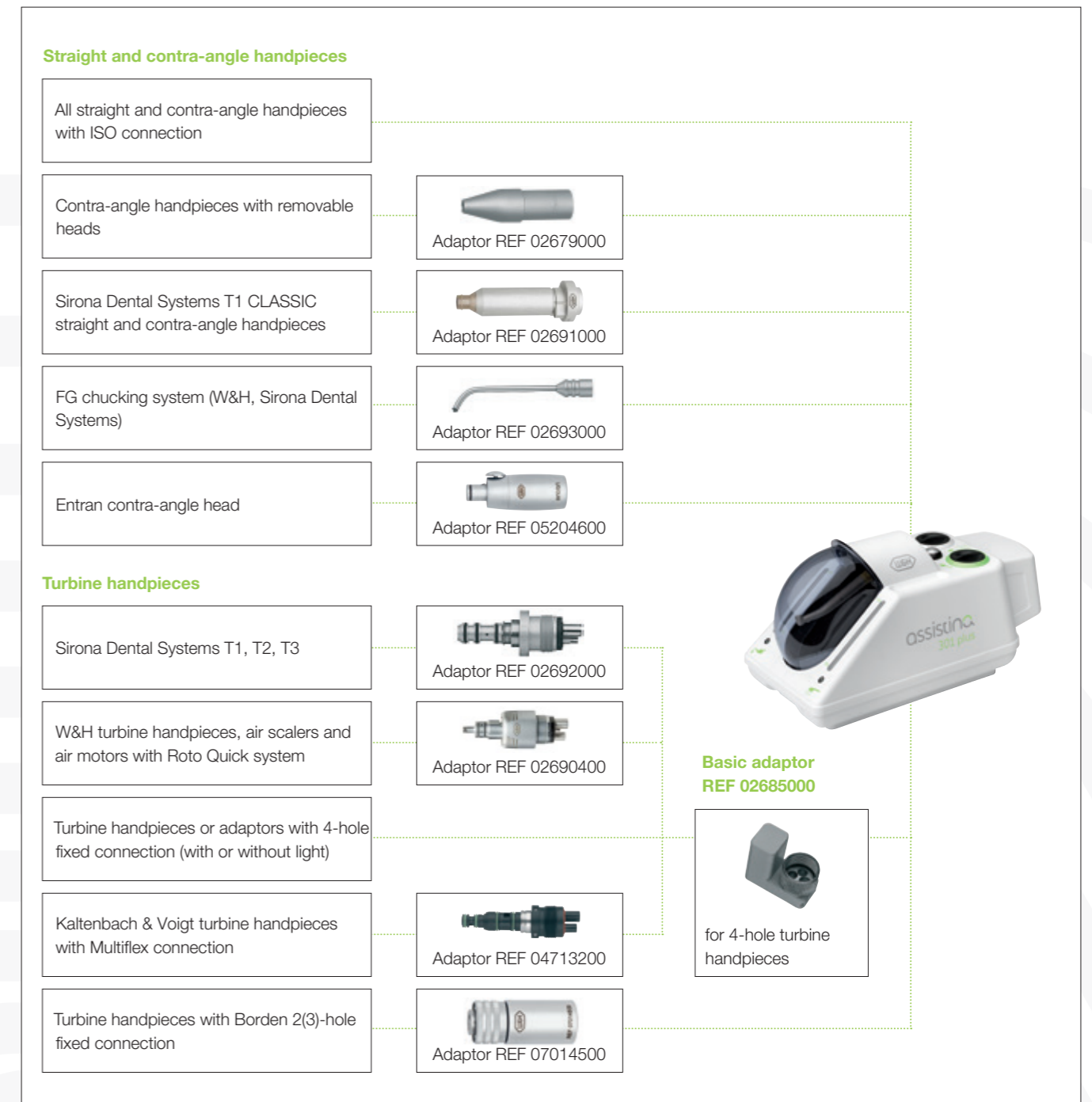
System overview adaptors

Assistina Twin



System overview adaptors

Assistina 301 plus



Manufacturer:

W&H Dentalwerk Bürmoos GmbH

Ignaz-Glaser-Straße 53, Postfach 1

5111 Bürmoos, **Austria**

t +43 6274 6236-0

f +43 6274 6236-55

office@wh.com

wh.com

W&H Sterilization Srl.

Via Bolgara, 2

24060 Brusaporto (BG), **Italy**

t +39 035-66 63 000

f +39 035-50 96 988

office.sterilization@wh.com

wh.com