



## Property Highlights

- 4802 - 5030 E Ray Rd
- Available Spaces: 865 SF - 2,400 SF
- GLA: 314,582 SF
- Multiple fascia signs facing Ray Rd & 48th St
- High Traffic Counts

## Area Co-Tenants



## Contact

**BRYAN LEDBETTER** . . . . . 602.795.8670  
[bledbetter@w-retail.com](mailto:bledbetter@w-retail.com)

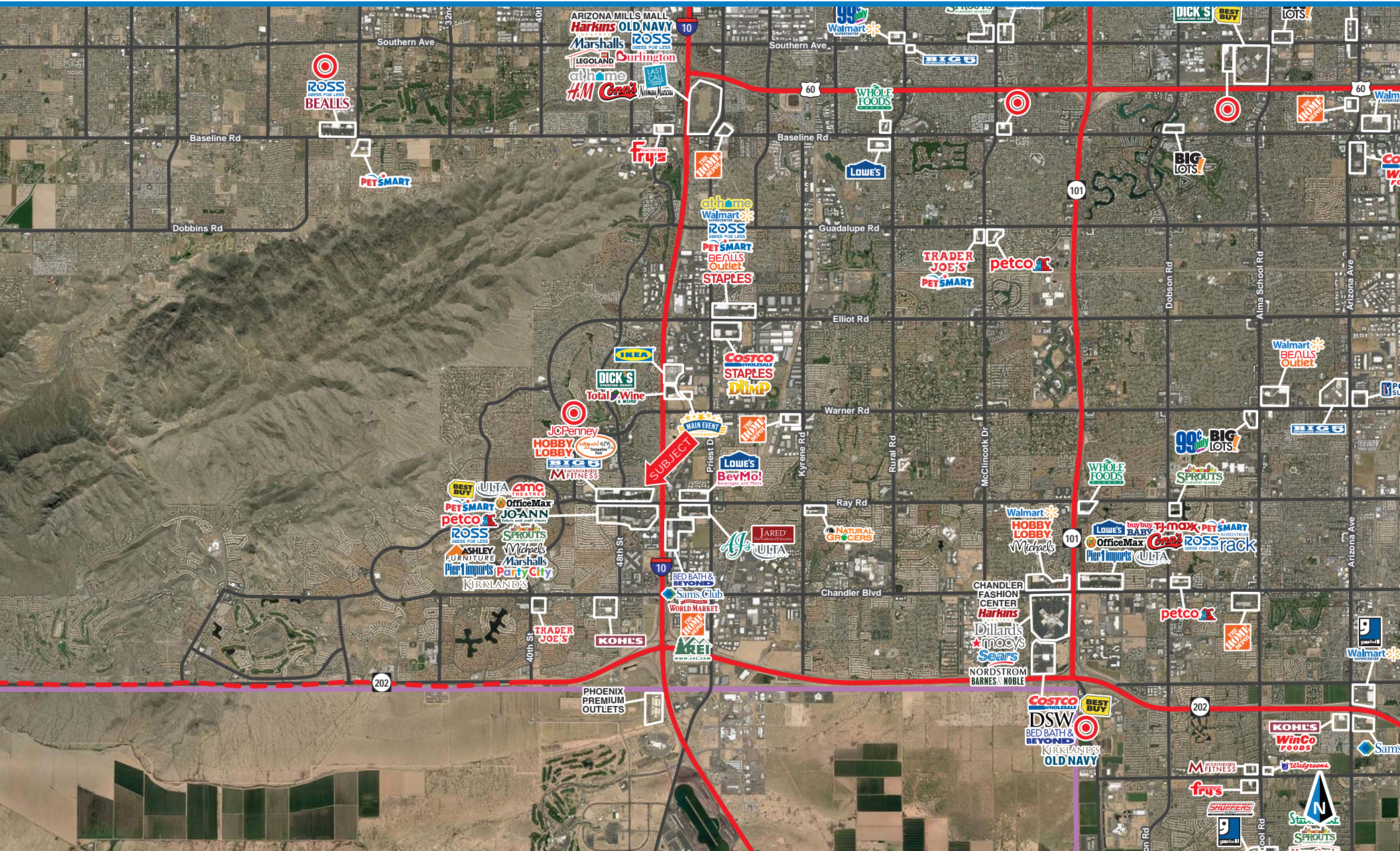
**KATIE WEEKS** . . . . . 602.368.1372  
[kweeks@w-retail.com](mailto:kweeks@w-retail.com)



**WESTERN  
RETAIL ADVISORS**

# Limited Space Available

Foothills Park Place | Northeast Corner 48th Street & Ray Road | Phoenix, Arizona



**WESTERN RETAIL ADVISORS**  
2555 E Camelback Rd, Ste 200, Phoenix, AZ 85016

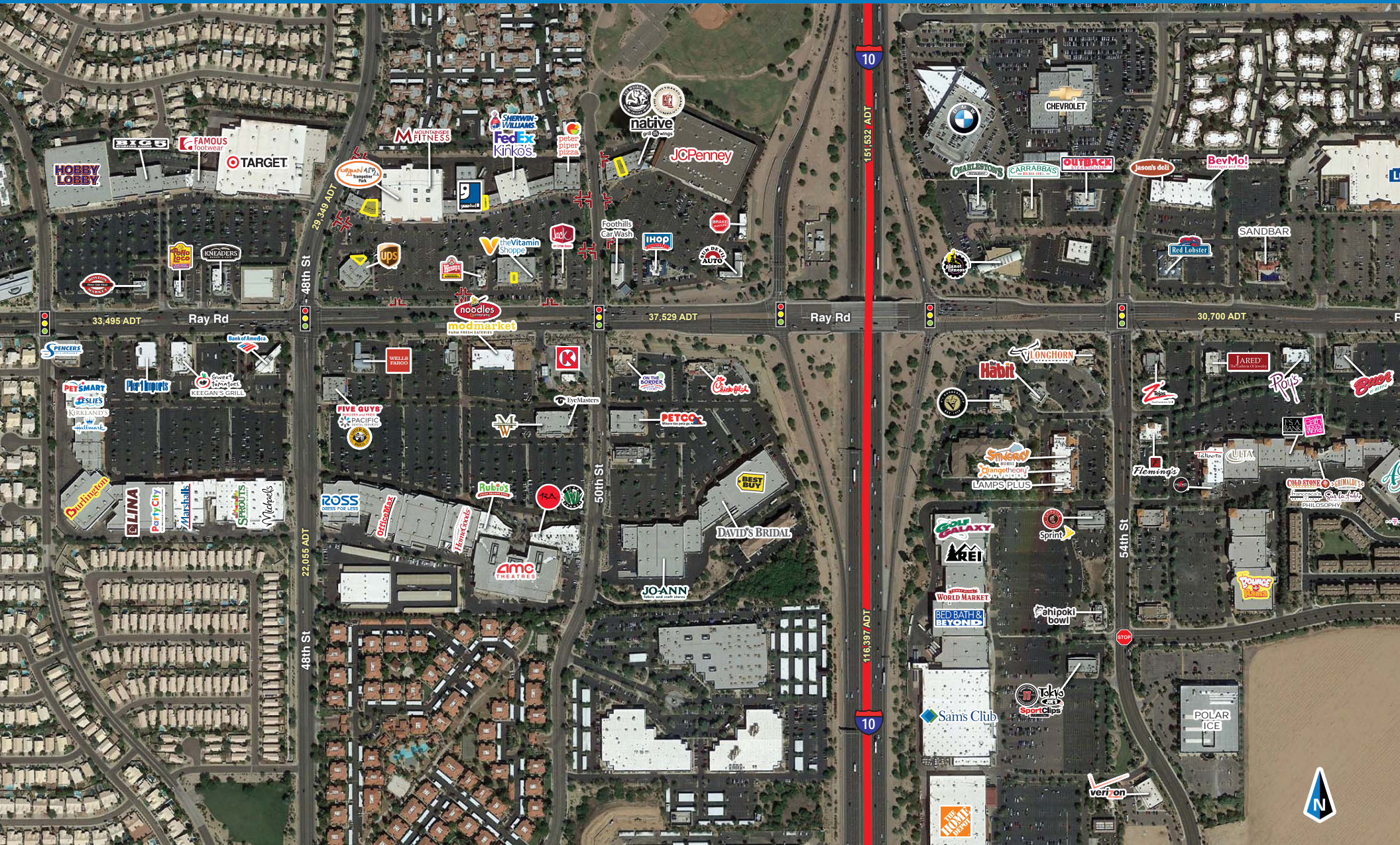
The information contained within this brochure has been obtained from sources other than Western Retail Advisors, LLC. Western Retail Advisors has not verified such information and makes no guarantee, warranty or representation about such information. It is your responsibility to independently confirm its accuracy and completeness. Any dimensions, specifications, floor plans and information may not be accurate and should be verified by you prior to the lease or purchase of the property.



**WESTERN  
RETAIL ADVISORS**

# Limited Space Available

Foothills Park Place | Northeast Corner 48th Street & Ray Road | Phoenix, Arizona



**WESTERN RETAIL ADVISORS**  
2555 E Camelback Rd, Ste 200, Phoenix, AZ 85016

The information contained within this brochure has been obtained from sources other than Western Retail Advisors, LLC. Western Retail Advisors has not verified such information and makes no guarantee warranty or representation about such information. It is your responsibility to independently confirm its accuracy and completeness. Any dimensions, specifications, floor plans and information may not be accurate and should be verified by you prior to the lease or purchase of the property.





**WESTERN**  
RETAIL ADVISORS

# Limited Space Available

Foothills Park Place | Northeast Corner 48th Street & Ray Road | Phoenix, Arizona



## Shops A - 4810 E. Ray Road

Suite	Tenant	SF
A-01	Subway	1,200
A-03	Fine Fitters Alterations	1,200
A-05	Good Feet	1,200
A-07	Cost Cutters	1,080
A-09	Yogurt	1,264
A-11	Kitchen & Bath Showroom	1,328
A-13	AVAILABLE	1,698
A-15	Arroy Thai	1,400

## Shops B, C, D - 4940 E. Ray Road

Suite	Tenant	SF
B-01/03	Hand & Stone	2,820
B-71	Gentleman Joe's	1,080
C-01	AVAILABLE	1,375
C-02	H&R Block Premium Office	2,010

C-03	Sally Beauty Supply	1,200
1	Goodwill	22,565
2	Kid to Kid	6,000
3A	FedEx Office	7,000
3B	Sherwin-Williams	5,000
D-01	Desert Financial CU	5,914
D-03	Churchill's Fine Cigars	1,748
4	Peter Piper Pizza	14,000

## Shops F - 4802 E. Ray Road

Suite	Tenant	SF
F-01	Johnson Equipment	4,332
F-05	UBREAK IFIX	1,068
F-07	Imagine Dental	1,355
F-09	True Nutrition Bar	1,040
F-11	The UPS Store	1,002
F-13	AVAILABLE	865

F-15	Bike Masters	2,544
F-17	GameStop	1,388
F-21	Jackson Hewitt Tax Svc.	512

## Shops G - 4910 E. Ray Road

Suite	Tenant	SF
G-01	Mattress Firm	4,672
G-07	AVAILABLE (Former Bakery)	1,500
G-09	Wow Wow Hawaiian Lemonade	1,200
G-11	BOSA Donuts	1,200
G-13	The Vitamin Shoppe	3,867
G-17	Reformed Pilates	1,750
G-21	Le AZ Nails	1,005
G-23	Edward Jones	950
G-24	Sunchain Tanning Salon	1,546

## Shops J - 5030 E. Ray Road

Suite	Tenant	SF
J-01	Honey Baked Ham	3,084
J-03	AVAILABLE	2,400
J-05	The Whining Pig	1,600
J-09	Native Grill and Wings	6,498
MJR 1	Mountainside Fitness	62,868
MJR 2	JCPenney	104,880 (NAP)
Pad 1	Wendy's	2,750 (NAP)
Pad 2	Jack-In-The-Box	2,637 (NAP)
Pad 3	Int'l House of Pancakes	5,400 (NAP)
Pad 4	Foothills Car Wash	6,036
Pad 5	BrakeMasters	3,786 (NAP)
Pad 6	Sun Devil Auto	5,927 (NAP)

**WESTERN RETAIL ADVISORS**  
2555 E Camelback Rd, Ste 200, Phoenix, AZ 85016

The information contained within this brochure has been obtained from sources other than Western Retail Advisors, LLC. Western Retail Advisors has not verified such information and makes no guarantee warranty or representation about such information. It is your responsibility to independently confirm its accuracy and completeness. Any dimensions, specifications, floor plans and information may not be accurate and should be verified by you prior to the lease or purchase of the property.

	1 miles	3 miles	5 miles
<b>POPULATION SUMMARY</b>			
2018 Total Population	15,669	93,136	205,661
2023 Total Population	16,699	99,293	219,298
2015-2020 Annual Growth Rate	1.28%	1.29%	1.24%
2018 Median Age	33.6	37.7	36.4
<b>INCOME SUMMARY</b>			
Median Household Income	\$60,736	\$76,217	\$70,941
Average Household Income	\$78,876	\$100,141	\$95,468
<b>BUSINESS DATA</b>			
Total Businesses:	756	3,604	7,109
Total Employees:	11,503	58,549	105,841
Daytime Population:	17,628	97,338	192,953
<b>POPULATION 25+ BY EDUCATIONAL ATTAINMENT</b>			
Associate Degree	13.4%	10.2%	9.4%
Bachelor's Degree	29.6%	30.1%	28.1%
Graduate/Professional Degree	13.6%	19.1%	17.8%
Percent of Population with Degrees	56.6%	59.4%	55.3%
<b>EMPLOYED POPULATION 16+ BY OCCUPATION</b>			
Total	9,545	54,348	118,548
White Collar	74.5%	76.2%	72.6%
Services	13.0%	12.5%	14.8%
Blue Collar	12.5%	11.3%	12.6%
<b>HOUSEHOLD SUMMARY</b>			
2018 Households	7,162	38,630	82,517
2018 Average Household Size	2.18	2.41	2.48
2018 Average Family Size	2.89	3.03	3.11
2018 Median Home Value	\$265,221	\$286,869	\$278,220