

Property Highlights

- Space available from $\pm 1,050$ SF to $\pm 2,420$ SF
- Move-in ready spaces available
- Located at key intersection with excellent visibility from Baseline Road
- Ample parking
- Pylon signage available
- Close proximity to I-10 and US-60 for easy access

Area Co-Tenants



Contact

JASON FESSINGER 602.368.1090
jfessinger@w-retail.com

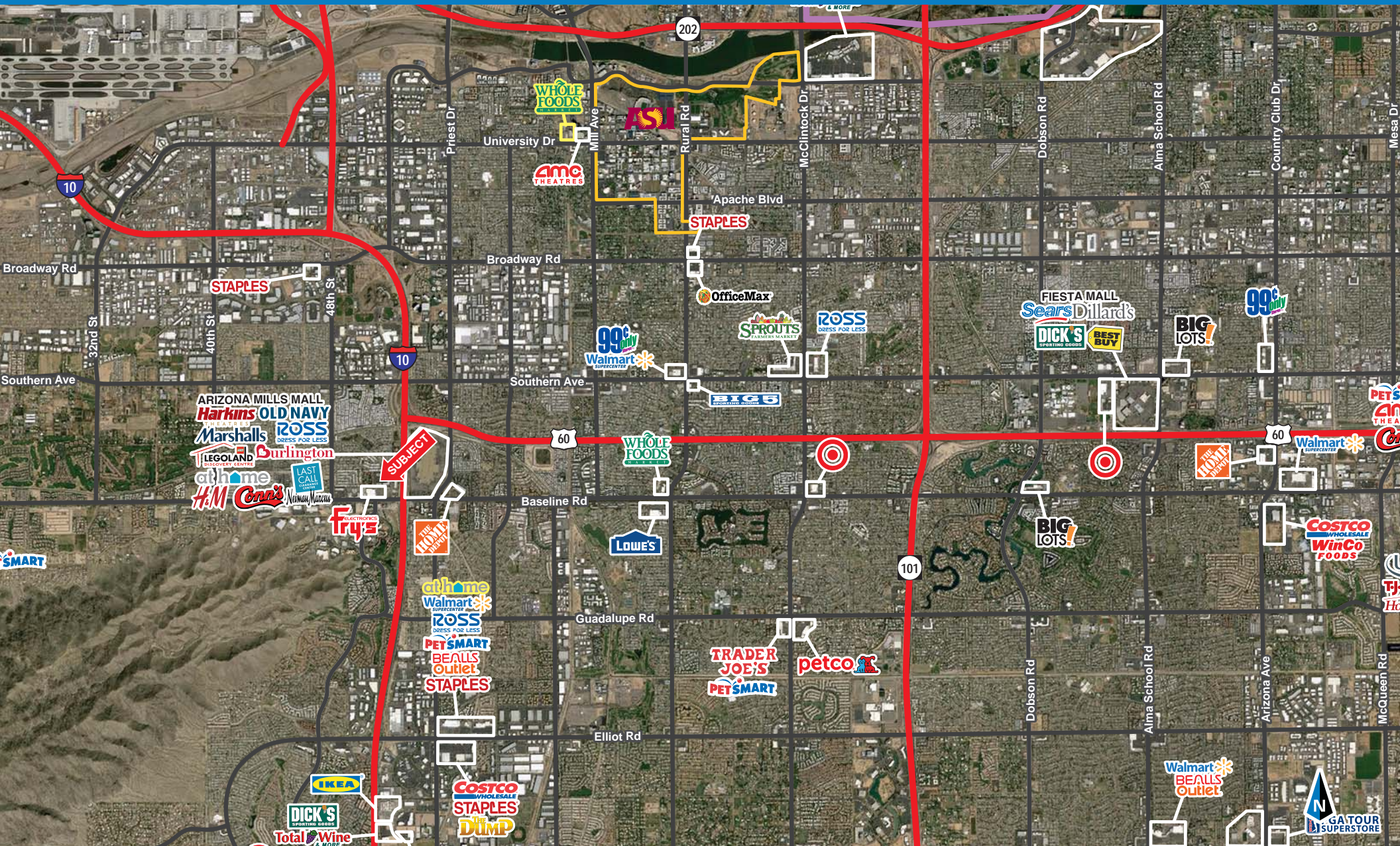
KALEN RICKARD 602.931.4492
krickard@w-retail.com



WESTERN
RETAIL ADVISORS

South Point Plaza

Northeast Corner Baseline & 48th Street | Tempe, Arizona



WESTERN RETAIL ADVISORS
2555 E Camelback Rd, Ste 200, Phoenix, AZ 85016

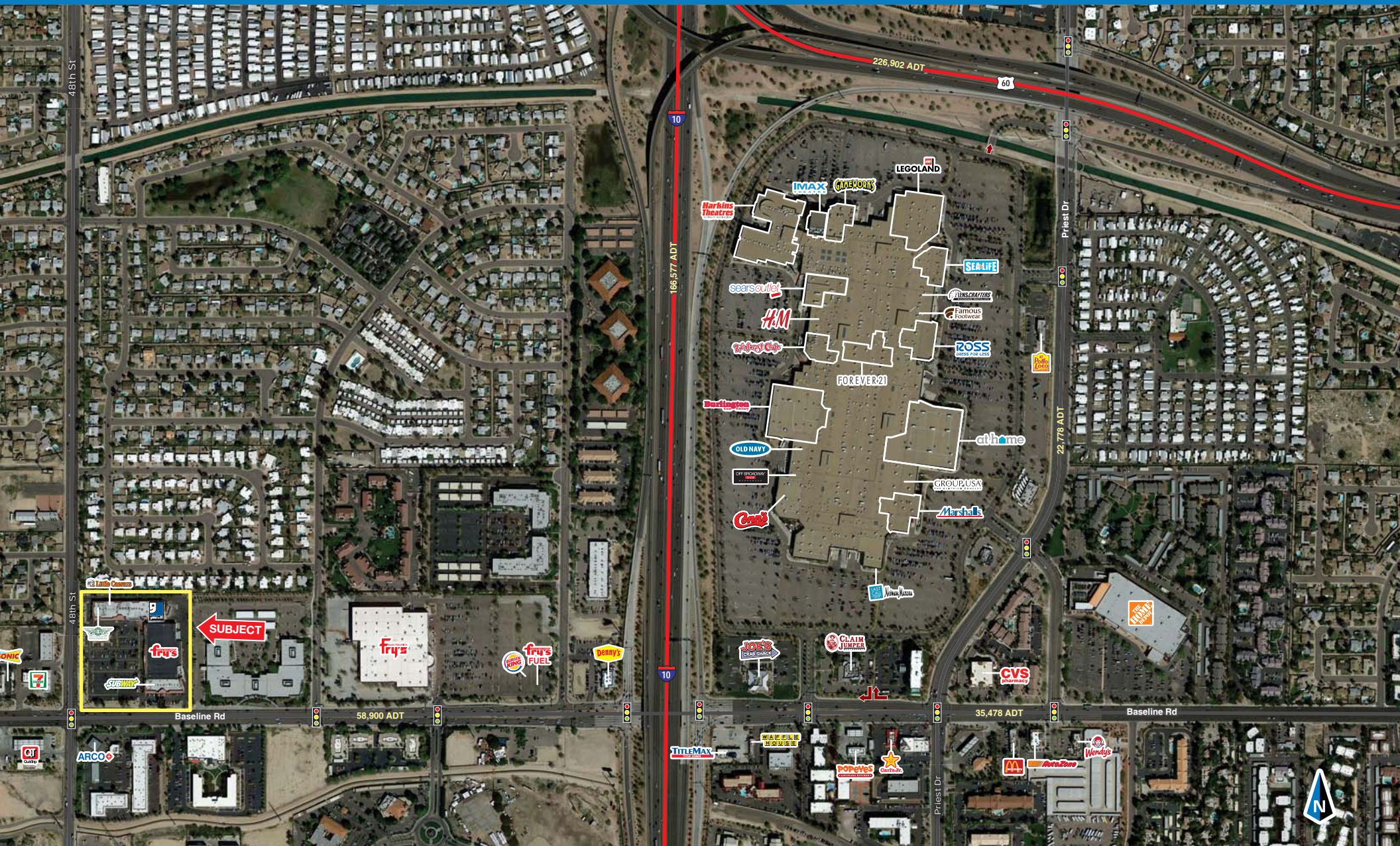
The information contained within this brochure has been obtained from sources other than Western Retail Advisors, LLC. Western Retail Advisors has not verified such information and makes no guarantee warranty or representation about such information. It is your responsibility to independently confirm its accuracy and completeness. Any dimensions, specifications, floor plans and information may not be accurate and should be verified by you prior to the lease or purchase of the property.



WESTERN
RETAIL ADVISORS

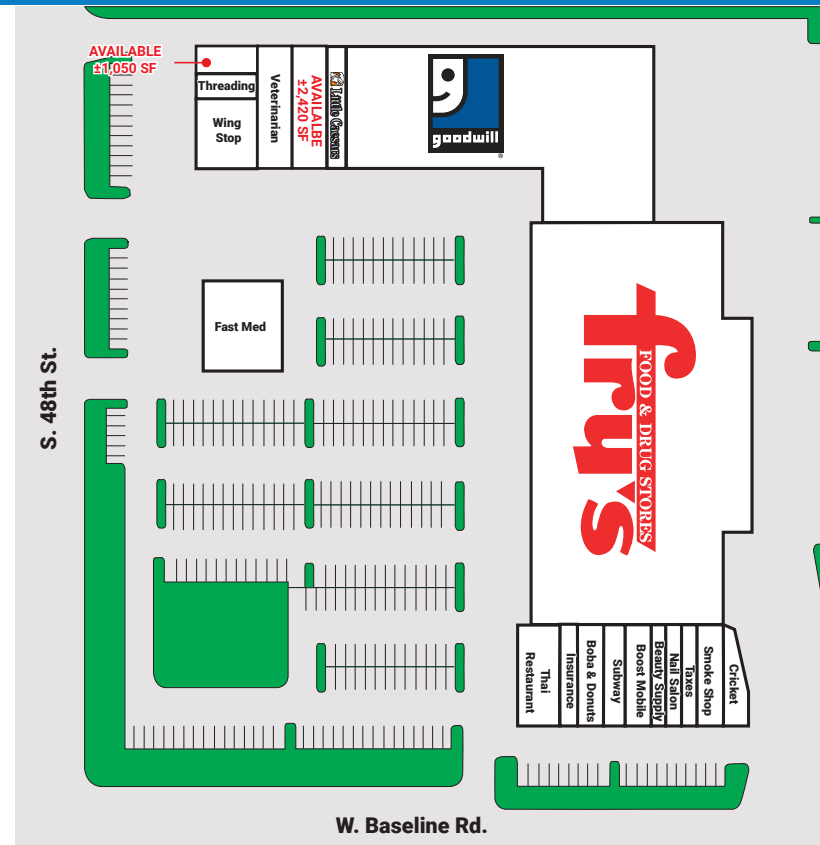
South Point Plaza

Northeast Corner Baseline & 48th Street | Tempe, Arizona



WESTERN RETAIL ADVISORS
2555 E Camelback Rd, Ste 200, Phoenix, AZ 85016

The information contained within this brochure has been obtained from sources other than Western Retail Advisors, LLC. Western Retail Advisors has not verified such information and makes no guarantee warranty or representation about such information. It is your responsibility to independently confirm its accuracy and completeness. Any dimensions, specifications, floor plans and information may not be accurate and should be verified by you prior to the lease or purchase of the property.



Demographics 2018

	1 miles	3 miles	5 miles
Estimated Population	14,666	96,447	275,474
Estimated Households	5,481	38,750	105,933
Average HH Income	\$59,849	\$65,868	\$75,684
Median HH Income	\$43,952	\$50,237	\$54,264
Workplace Employees (Full Time)	8,141	96,743	220,664
Daytime Population	15,913	141,203	350,657