



## Property Highlights

- 1.15 Acre PAD, 2.08 Acre PAD, & 1.27 Acre PAD for Sale
- Anchored by Kohl's department store
- Near 303 Freeway
- Fully Improved Pads

## Area Co-Tenants

**KOHL'S**

**THE LEARNING  
EXPERIENCE**

**CHASE**

## Contact

JASON FESSINGER ..... 602.368.1090  
[jfessinger@w-retail.com](mailto:jfessinger@w-retail.com)

KALEN RICKARD ..... 602.931.4492  
[krickard@w-retail.com](mailto:krickard@w-retail.com)

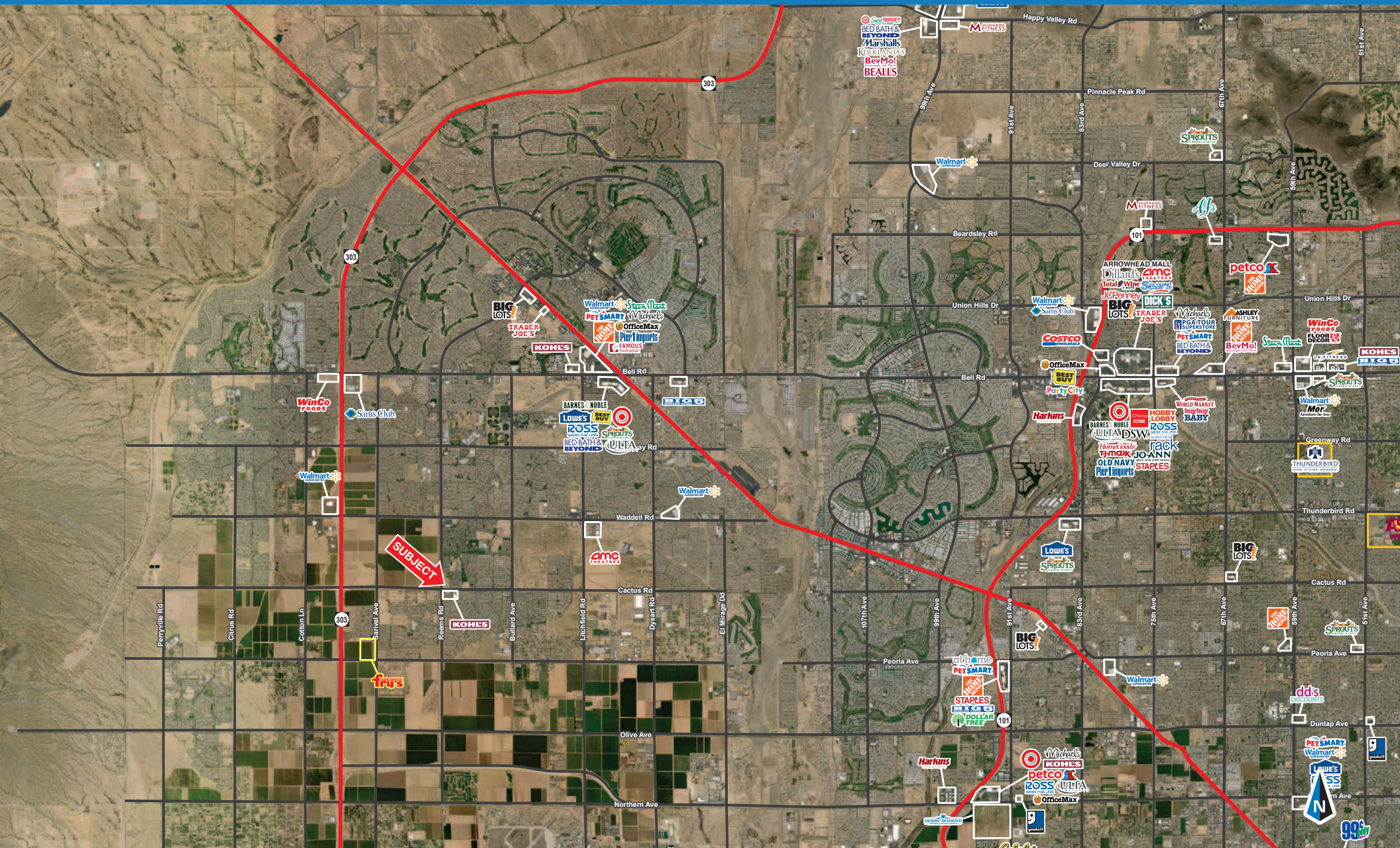




**WESTERN  
RETAIL ADVISORS**

# PADS For Sale

Southeast Corner Cactus Road & Reems Road | Surprise, Arizona



**WESTERN RETAIL ADVISORS**  
2555 E Camelback Rd, Ste 200, Phoenix, AZ 85016

The information contained within this brochure has been obtained from sources other than Western Retail Advisors, LLC. Western Retail Advisors has not verified such information and makes no guarantee warranty or representation about such information. It is your responsibility to independently confirm its accuracy and completeness. Any dimensions, specifications, floor plans and information may not be accurate and should be verified by you prior to the lease or purchase of the property.





**WESTERN**  
RETAIL ADVISORS

# PADS For Sale

Southeast Corner Cactus Road & Reems Road | Surprise, Arizona



**WESTERN RETAIL ADVISORS**  
2555 E Camelback Rd, Ste 200, Phoenix, AZ 85016

The information contained within this brochure has been obtained from sources other than Western Retail Advisors, LLC. Western Retail Advisors has not verified such information and makes no guarantee warranty or representation about such information. It is your responsibility to independently confirm its accuracy and completeness. Any dimensions, specifications, floor plans and information may not be accurate and should be verified by you prior to the lease or purchase of the property.

	1 miles	3 miles	5 miles
<b>POPULATION SUMMARY</b>			
2018 Total Population	12,893	63,669	176,936
2023 Total Population	14,457	72,010	194,946
2018-2023 Annual Growth Rate	2.32%	2.49%	1.96%
2018 Median Age	30.8	31.2	35.7
<b>INCOME SUMMARY</b>			
Median Household Income	\$78,048	\$81,100	\$74,273
Average Household Income	\$88,031	\$81,100	\$74,273
<b>BUSINESS DATA</b>			
Total Businesses:	123	802	2,866
Total Employees:	1,046	9,090	38,083
Daytime Population:	8,053	42,082	142,676
<b>POPULATION 25+ BY EDUCATIONAL ATTAINMENT</b>			
Associate Degree	8.0%	10.8%	9.4%
Bachelor's Degree	23.8%	18.1%	17.2%
Graduate/Professional Degree	10.4%	8.3%	8.4%
Percent of Population with Degrees	42.2%	37.2%	35.0%
<b>EMPLOYED POPULATION 16+ BY OCCUPATION</b>			
Total	5,886	30,676	72,341
White Collar	65.8%	64.0%	60.5%
Services	14.6%	18.4%	21.3%
Blue Collar	19.6%	17.6%	18.2%
<b>HOUSEHOLD SUMMARY</b>			
2018 Households	3,808	19,881	61,223
2018 Average Household Size	3.38	3.20	2.87
2018 Average Family Size	3.67	3.55	3.31
2018 Median Home Value	\$235,531	\$216,935	\$213,180