

**Targeting:
Grocery,
Fitness &
Retail**



Property Highlights

- 90,509 SF Available (divisible)
- Show Low is the shopping hub of a permanent trade area population of more than 150,000
- Show Low is the largest city in Arizona's White Mountains and is one of the fastest growing cities in Northern Arizona
- Zoned C-2 (general commercial)

Area Co-Tenants



Contact

BRYAN LEDBETTER 602.795.8670
bledbetter@w-retail.com

NEIL BOARD 602.778.3781
nboard@w-retail.com

KATIE WEEKS 602.368.1372
kweeks@w-retail.com

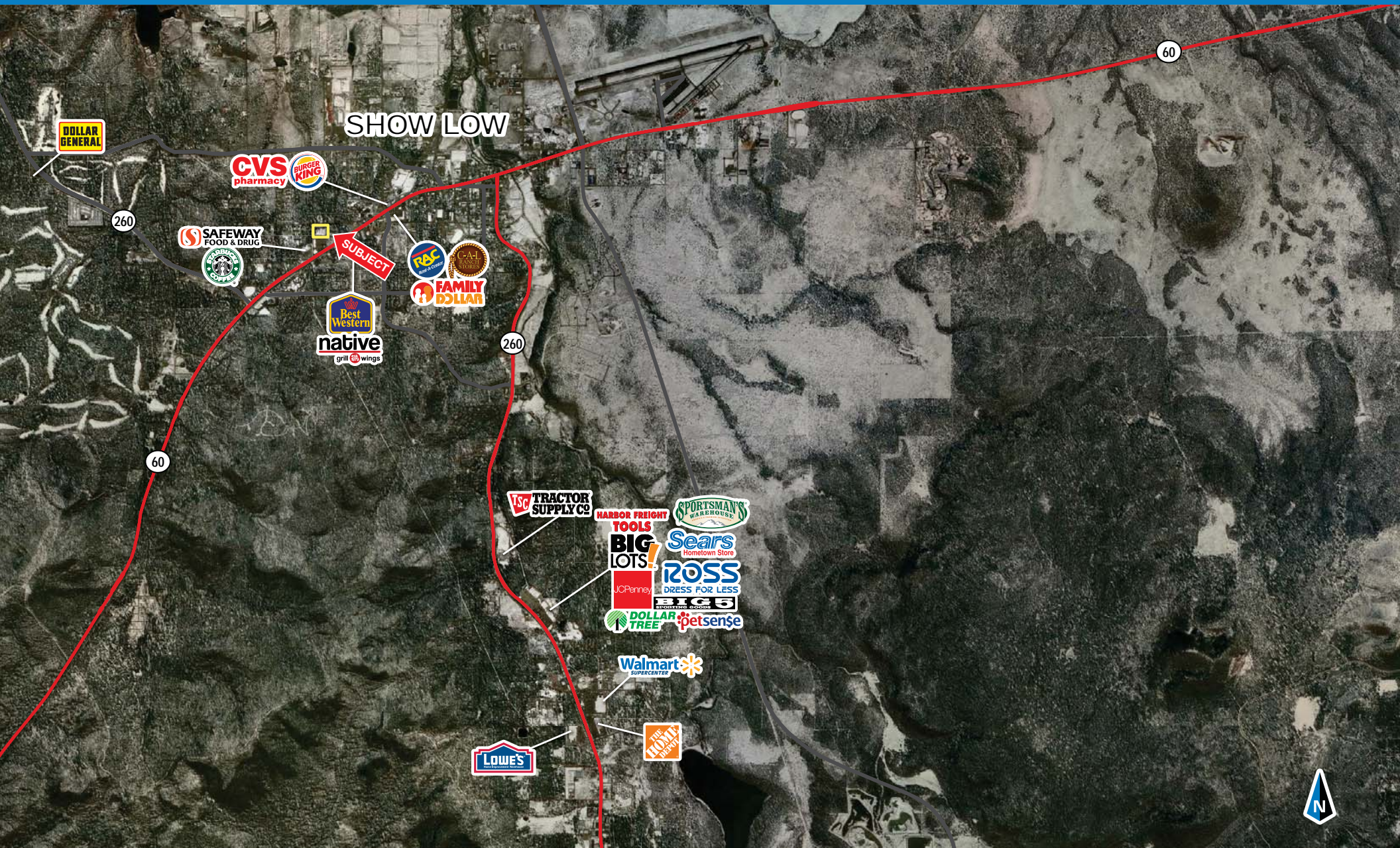




WESTERN
RETAIL ADVISORS

For Lease: 90,509 SF Available

North Northeast Corner Deuce of Clubs & Owens | Show Low, Arizona



WESTERN RETAIL ADVISORS
2555 E Camelback Rd, Ste 200, Phoenix, AZ 85016

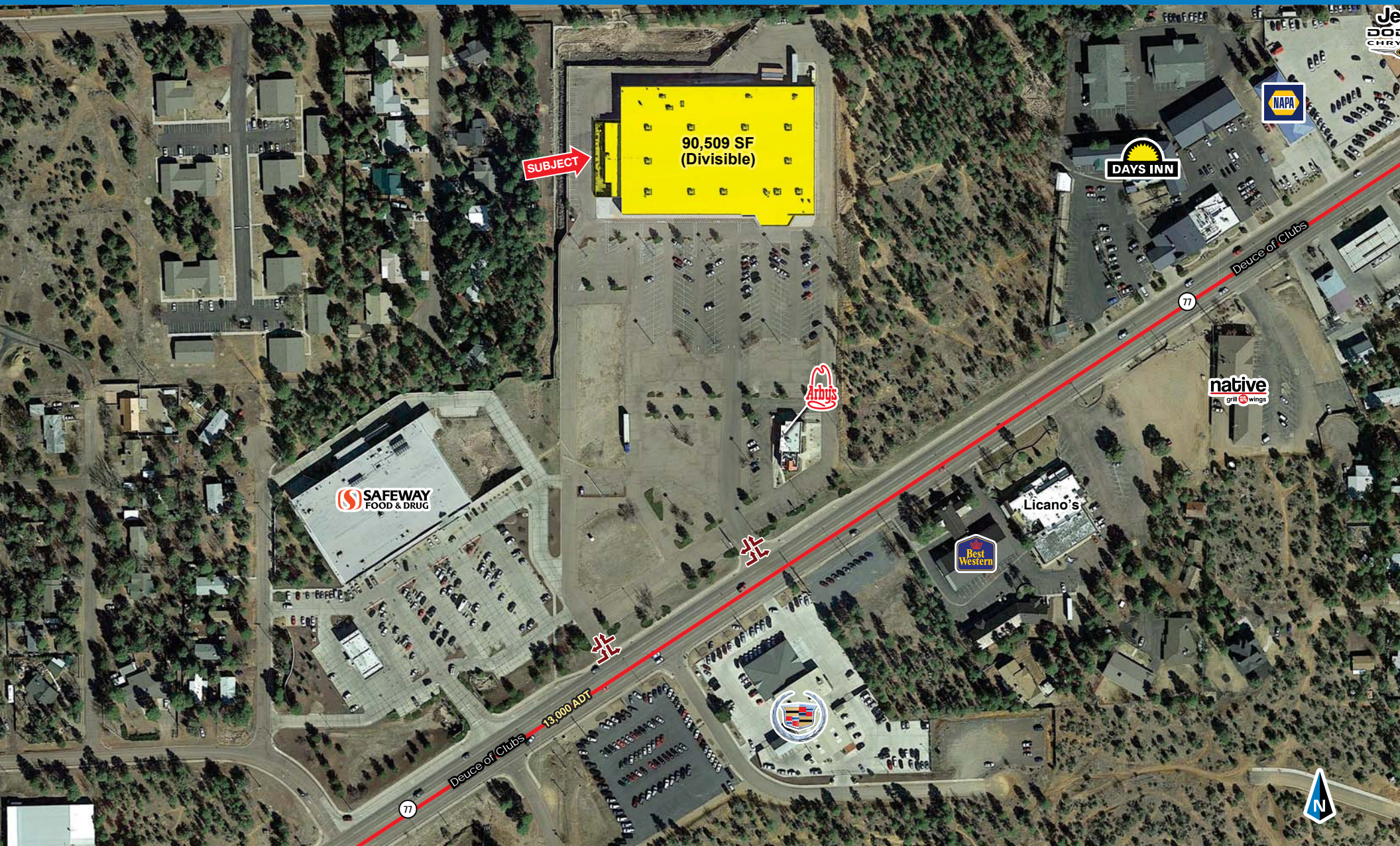
The information contained within this brochure has been obtained from sources other than Western Retail Advisors, LLC. Western Retail Advisors has not verified such information and makes no guarantee warranty or representation about such information. It is your responsibility to independently confirm its accuracy and completeness. Any dimensions, specifications, floor plans and information may not be accurate and should be verified by you prior to the lease or purchase of the property.



WESTERN
RETAIL ADVISORS

For Lease: 90,509 SF Available

North Northeast Corner Deuce of Clubs & Owens | Show Low, Arizona



WESTERN RETAIL ADVISORS
2555 E Camelback Rd, Ste 200, Phoenix, AZ 85016

The information contained within this brochure has been obtained from sources other than Western Retail Advisors, LLC. Western Retail Advisors has not verified such information and makes no guarantee warranty or representation about such information. It is your responsibility to independently confirm its accuracy and completeness. Any dimensions, specifications, floor plans and information may not be accurate and should be verified by you prior to the lease or purchase of the property.

Show Low, AZ Trade Area



Show Low, AZ Trade Area Demographic Profile

Trade Area:	75 Mile Radius
2015 Permanent Population:	151,520 - 15,300 (Payson, AZ Population) - 10,900 (Globe-Claypool, AZ Population) - 9,655 (Winslow, AZ Population) - 4,030 (San Carlos, AZ Population) - 1,350 (Peridot, AZ Population) + 1,870 (1/2 of Catron County, NM Population) <u>+ 25,000 (Estimated seasonal population)</u>
Total Population:	137,155
2015 Male Population:	49.8%
2015 Female Population:	50.2%
Ethnicity:	
White:	69.6%
Black:	1.6%
Native American:	18.4%
Asian or Pacific Islander:	0.7%
Other Race:	6.8%
Two or More Races:	2.9%
Hispanic Origin:	16.9%
2015 Median Age:	37.7 Years
2015 Population under 45 years of age:	57.4%
2015 Population ages 20-44:	27.6%
2015 Population ages 45-64:	25.7%
2015 Population ages 65+:	16.9%
2015 Total Households	52,847
2015 Average Household Size:	2.8
2015 Average Household Income:	\$55,530
2015 Households w/ annual income > \$50,000:	47%
2015 Households w/ annual income > \$75,000:	21%
High School Graduates:	83%
College Graduates:	25%
Some College Experience	52%