

Property Highlights

- ±14.3 Acres
- Parcel(s): APN 508-13-600
- Zoning: PAD, City of Goodyear
- Call for Pricing

Traffic Counts

- North: N/A
- South: N/A
- East: 10,664
- West: 7,0001

Contact

BRIAN GAUSDEN 602.778.3740
bgausden@w-retail.com

ADAM SMITH 602.778.3741
asmith@w-retail.com

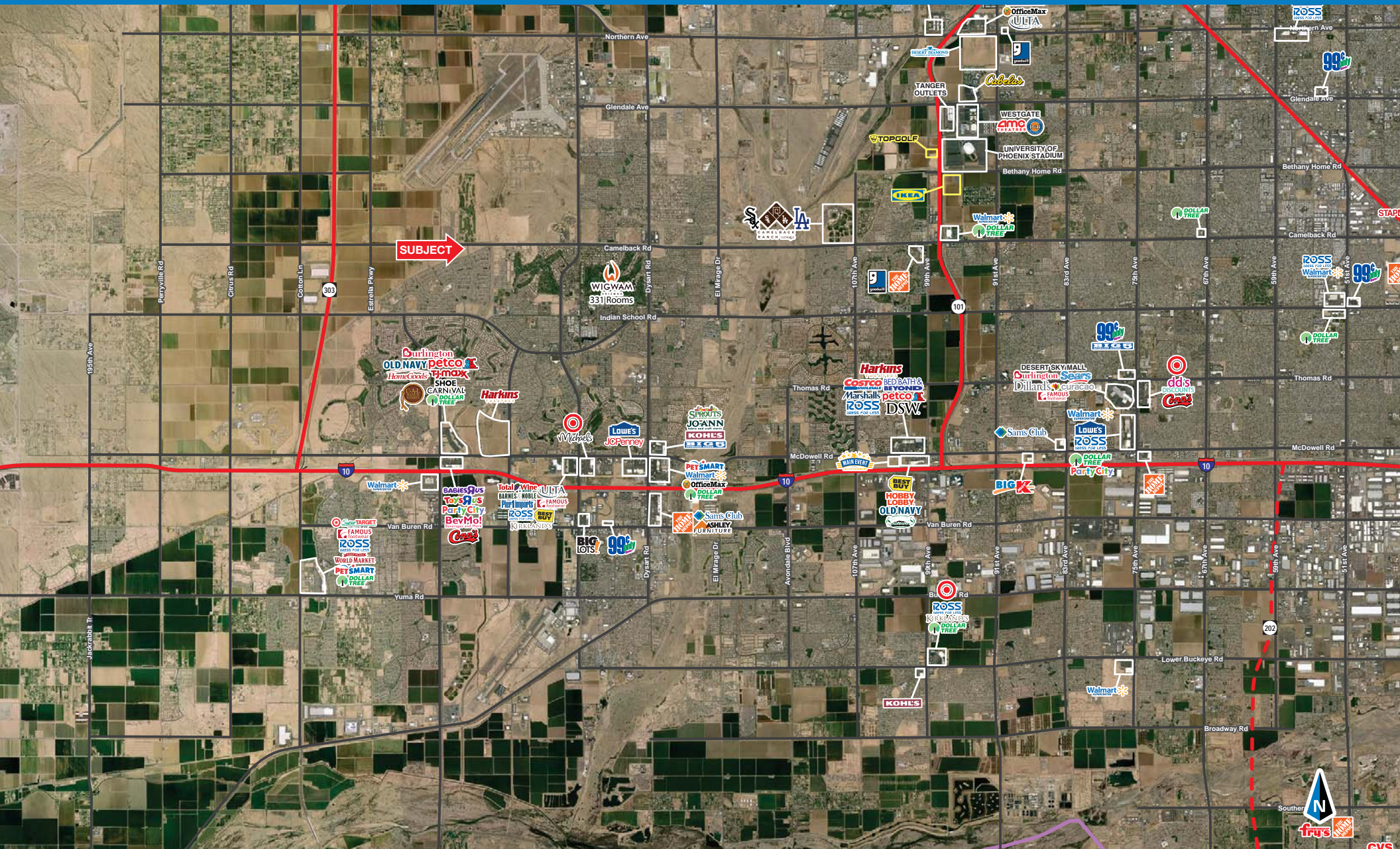
JAKE MCCLAUGHRY 602.368.1088
jmcclaughry@w-retail.com



WESTERN
RETAIL ADVISORS

Camelback & 152nd Ave

Southeast Corner Camelback Road & 152nd Avenue | Goodyear, Arizona



WESTERN RETAIL ADVISORS
2555 E Camelback Rd, Ste 200, Phoenix, AZ 85016

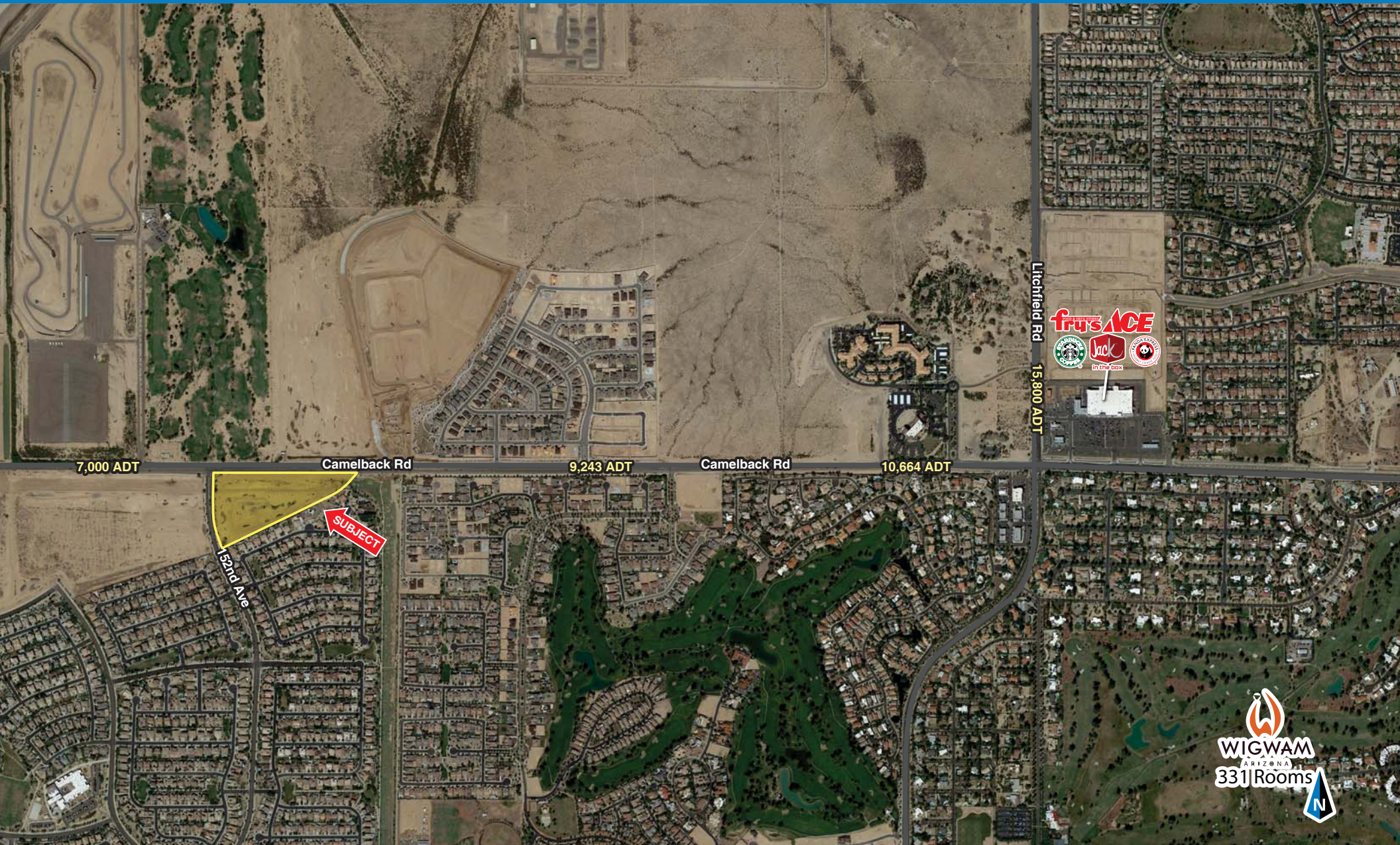
The information contained within this brochure has been obtained from sources other than Western Retail Advisors, LLC. Western Retail Advisors has not verified such information and makes no guarantee, warranty or representation about such information. It is your responsibility to independently confirm its accuracy and completeness. Any dimensions, specifications, floor plans and information may not be accurate and should be verified by you prior to the lease or purchase of the property.



WESTERN
RETAIL ADVISORS

Camelback & 152nd Ave

Southeast Corner Camelback Road & 152nd Avenue | Goodyear, Arizona



WESTERN RETAIL ADVISORS
2555 E Camelback Rd, Ste 200, Phoenix, AZ 85016

The information contained within this brochure has been obtained from sources other than Western Retail Advisors, LLC. Western Retail Advisors has not verified such information and makes no guarantee warranty or representation about such information. It is your responsibility to independently confirm its accuracy and completeness. Any dimensions, specifications, floor plans and information may not be accurate and should be verified by you prior to the lease or purchase of the property.

	1 miles	3 miles	5 miles
POPULATION SUMMARY			
2017 Total Population	13,118	121,835	352,551
2022 Total Population	14,034	129,325	375,025
2015-2020 Annual Growth Rate	1.36%	1.20%	1.24%
2017 Median Age	38.1	39.0	40.6
INCOME SUMMARY			
Median Household Income	\$51,086	\$62,086	\$55,817
Average Household Income	\$70,294	\$78,707	\$71,266
BUSINESS DATA			
Total Businesses:	274	3,986	8,891
Total Employees:	2,242	56,861	112,558
Daytime Population:	8,889	115,766	297,198
POPULATION 25+ BY EDUCATIONAL ATTAINMENT			
Associate Degree	8.4%	9.0%	8.9%
Bachelor's Degree	14.8%	18.4%	17.1%
Graduate/Professional Degree	7.7%	9.4%	8.6%
Percent of Population with Degrees	30.9%	36.8%	34.6%
EMPLOYED POPULATION 16+ BY OCCUPATION			
Total	6,472	62,930	167,910
White Collar	69.4%	67.3%	64.5%
Services	13.3%	14.7%	16.9%
Blue Collar	17.4%	18.0%	18.6%
HOUSEHOLD SUMMARY			
2017 Households	5,021	45,771	136,483
2017 Average Household Size	2.59	2.63	2.55
2017 Average Family Size	3.17	3.12	3.09
2017 Median Home Value	\$182,893	\$212,890	\$191,382