

NEXT MSS

**DESIGNED TO ORGANIZE,
BUILT TO PERFORM.**

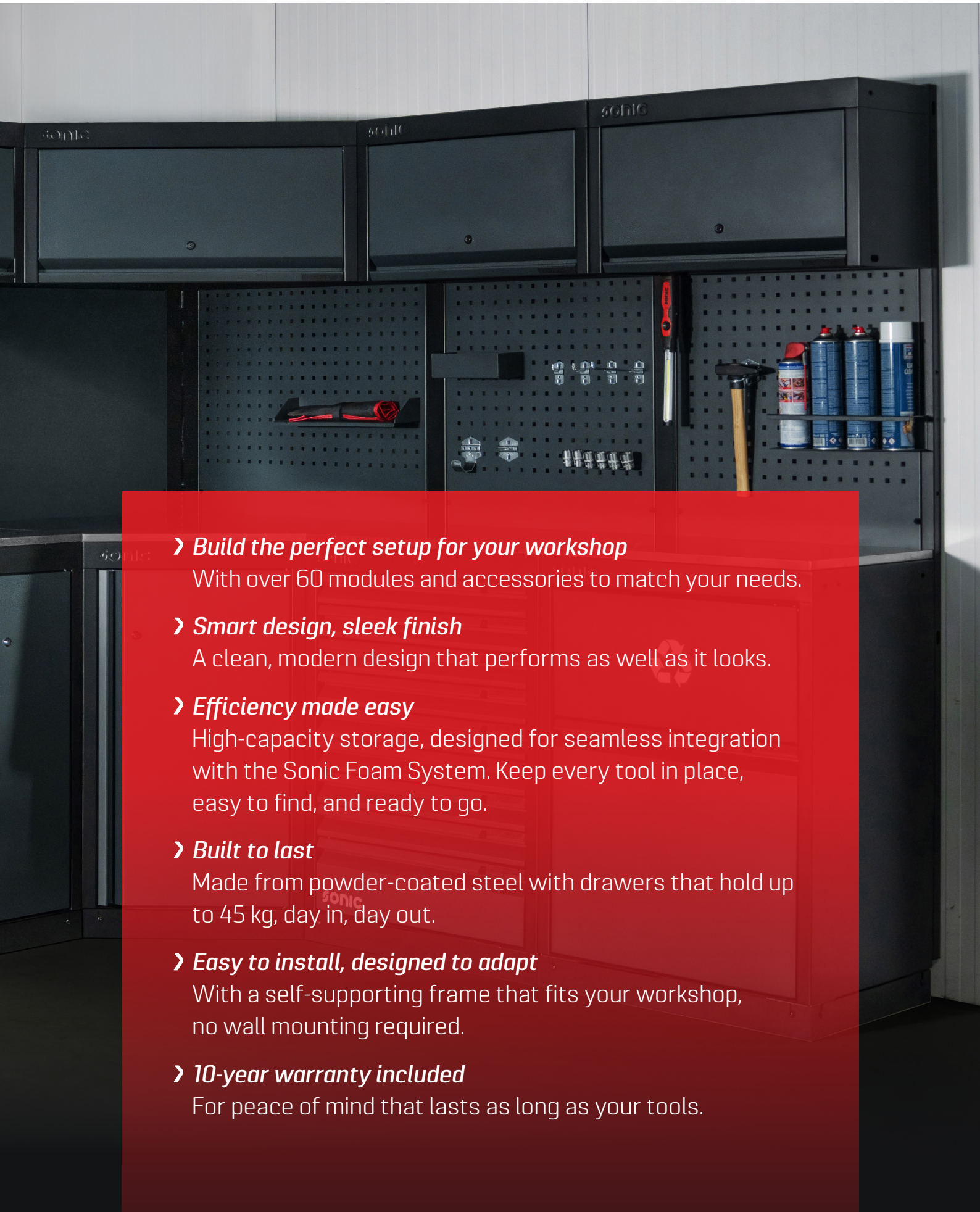
**GET MORE
DONE**

Designed to organize, built to perform.

NEXT MSS is the next evolution in workshop storage, built on the trusted MSS series - a workshop favorite among professionals for over a decade. Informed by 10+ years of customer feedback, every detail has been refined to streamline the way professionals work. NEXT MSS helps you get organized, work like a professional, and get more done.

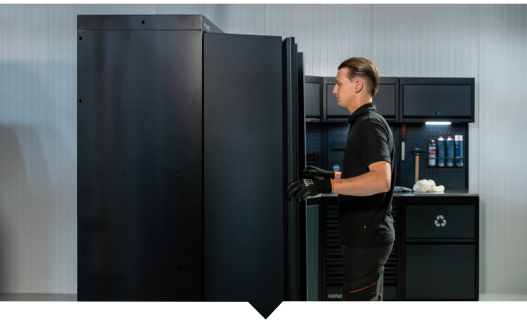


10 YEAR
WARRANTY



- › ***Build the perfect setup for your workshop***
With over 60 modules and accessories to match your needs.
- › ***Smart design, sleek finish***
A clean, modern design that performs as well as it looks.
- › ***Efficiency made easy***
High-capacity storage, designed for seamless integration with the Sonic Foam System. Keep every tool in place, easy to find, and ready to go.
- › ***Built to last***
Made from powder-coated steel with drawers that hold up to 45 kg, day in, day out.
- › ***Easy to install, designed to adapt***
With a self-supporting frame that fits your workshop, no wall mounting required.
- › ***10-year warranty included***
For peace of mind that lasts as long as your tools.

Every detail, designed for your workflow.



Standalone construction

The robust, self-supporting frame installs without wall attachment – no drilling needed – for easy installation and standalone use in any professional workspace.



Flawless fit on uneven floors

Workshop floors are rarely perfect. NEXT MSS features dual kick-plates that compensate for floor irregularities, ensuring a flawless fit and a professional, integrated look.



Cabinet top trays

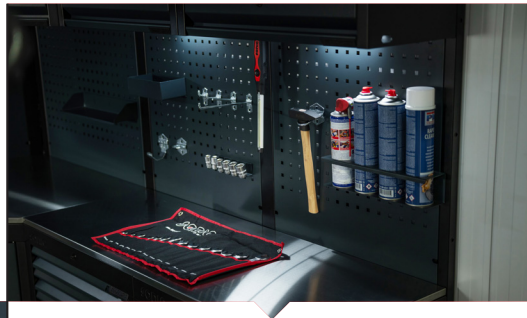
Smart additional storage, right on top. Cabinet top trays keep tools and parts within reach – with raised edges to prevent anything from falling off.



Integrated key locks

NEXT MSS comes with key locks for each cabinet, ergonomically positioned for ease of access. Keep your equipment securely stored - protected against loss, damage or unauthorised access.

NEXT MSS is more than just a storage system – it's a solution built around the needs of professionals. With a standalone construction, smart features and full compatibility with the Sonic Foam System, NEXT MSS turns any workspace into an efficient, organized environment.



Smart back panel attachments

Make the most of your vertical space. With hooks, holders and shelves, a range of smart add-ons ensures efficient use of space and fast access.



Easy height adjustment

Effortlessly adjust the height of your storage setup for a perfect fit. NEXT MSS makes it easy to align your storage system – for a stable base and a clean, professional look across your entire setup.



Sonic Configurator

Design your perfect setup with the Sonic Configurator. Visualize, customize and plan your layout – down to the last module.



Sonic Foam System

NEXT MSS is fully compatible with Sonic Foam System for the most efficient tool organization and a streamlined workflow. Choose from over 200 foam inlays, each with high-quality tools to match your specific needs. Discover more on page 8.

Build your ideal setup.

With a wide choice of cabinets, worktops, back panels and accessories, NEXT MSS gives you the flexibility to create a setup that keeps all your tools, equipment, and supplies organized, streamlines your workflow, and elevates your workshop.



CENTRALIZED
KEYED LOCK



BALL BEARING
DRAWER SLIDES



LOCKING
CASTERS



STAINLESS
STEEL WORKTOP



45
KG
DRAWER
MAX LOAD

HIGHLIGHTS NEXT MSS

Various drawer layouts available, with a combination of standard (62 mm inside height), deep (142 mm) and extra deep (220mm) drawers.

Gas strut-assisted doors for smooth and easy opening.

Magnetic door closures keep doors securely closed at all times.

Easy to install on a self supporting frame. No walls or drilling needed.

Central key locking system for secure storage.

Choice of solid or perforated back panels.

Built to last:
Created from durable steel with a protective powder-coated finish for long-lasting performance.

Fully compatible with the Sonic Foam System for the most efficient tool organization and workflow.

Available with a choice of stainless steel or wooden worktops.

Easily adjust cabinet height for perfect alignment.

Dual kick plates ensure a snug, seamless fit – compensating for uneven floors.



Finished in matte signal black (RAL 9004) body with anthracite grey (RAL 7016) drawers, doors, and back panels for a clean, professional look.



sonic

NEXT MSS

**GET MORE
DONE**

Sonic Foam System NEXT-level efficiency.

At the heart of every Sonic setup is the Sonic Foam System – expertly selected and organized tool sets in foam inlays, designed for maximum efficiency. It ensures every tool is easy to find, retrieve, and return – keeping sets complete and users productive. Independent research shows that working with the Sonic Foam System increases mechanic productivity, resulting in significant time and cost savings.

20%
FASTER

TIME IS MONEY
RETRIEVAL AND RETURN

78%
FASTER

PEACE OF MIND
INVENTORY OF TOOLBOX

80%
REDUCED

RISK VS REWARD
MISPLACED TOOLS

- › More than 200 preconfigured tool sets
- › Available in 4 sizes: S, M, L, XL
- › Dual color, shadowed foam
- › Resistant to most common fluids and chemicals
- › Where applicable, sizing on foam inlay
- › Inventory list with each foam inlay. This makes repeat orders easier for end user and reseller.

Vertically positioned deep sockets for optimal space utilization.

All sizes are laser engraved.

Precision-cut foam slots for each individual tool.

Durable, chemical-resistant foam with contrasting shadow layer.

Most frequently used tools positioned on the right for easy access.

Comprehensive sets also include less commonly used sizes.

Audit drawers in seconds for missing tools



Fully compatible with Sonic Foam System for the most efficient tool organization and workflow

Drawer cabinets



Width
674mm



Height
962mm



Depth
500mm

#	DESCRIPTION
47950	NEXT MSS drawer cabinet with 9 drawers 674mm



Width
845mm



Height
962mm



Depth
500mm

#	DESCRIPTION
47953	NEXT MSS drawer cabinet with 9 drawers 845mm



Width
674mm



Height
962mm



Depth
500mm

#	DESCRIPTION
47951	NEXT MSS drawer cabinet with 5 drawers 674mm



Width
845mm



Height
962mm



Depth
500mm

#	DESCRIPTION
47954	NEXT MSS drawer cabinet with 5 drawers 845mm



Width
674mm



Height
962mm



Depth
500mm

#	DESCRIPTION
47952	NEXT MSS drawer cabinet with 5 drawers 674mm



Portable cabinet



Width
674mm



Height
962mm



Depth
500mm

#	DESCRIPTION
47955	NEXT MSS portable cabinet with 6 drawers 674mm



Bridge unit



#	DESCRIPTION
47976	NEXT MSS bridge unit 845mm. Seamlessly links cabinets - creating space for a portable cabinet, chair, etc.



Storage cabinets



Width
610mm



Height
2000mm



Depth
530mm



Width
914mm



Height
2000mm



Depth
530mm

#	DESCRIPTION
47948	NEXT MSS storage cabinet tall 610mm

#	DESCRIPTION
47949	NEXT MSS storage cabinet tall 914mm



Width
674mm



Height
962mm



Depth
500mm



Width
845mm



Height
962mm



Depth
500mm

#	DESCRIPTION
47956	NEXT MSS storage cabinet 674mm

#	DESCRIPTION
47957	NEXT MSS storage cabinet 845mm



Width
674mm



Height
962mm



Depth
500mm



Width
875mm



Height
962mm



Depth
875mm

#	DESCRIPTION
47962	NEXT MSS storage cabinet with sink 674mm

#	DESCRIPTION
47958	NEXT MSS corner storage cabinet 875mm

Storage cabinets



Width
674mm



Height
962mm



Depth
500mm



Width
845mm



Height
962mm



Depth
500mm

#	DESCRIPTION
47959	NEXT MSS wastebin cabinet 674mm

#	DESCRIPTION
47960	NEXT MSS wastebin cabinet 674mm, with paper roll holder

Wall cabinets



Width
674mm



Height
400mm



Depth
300mm



Width
845mm



Height
400mm



Depth
300mm

#	DESCRIPTION
47963	NEXT MSS wall cabinet 674mm Optional top tray available for additional storage (#49147)

#	DESCRIPTION
47964	NEXT MSS wall cabinet 845mm Optional top tray available for additional storage (#49148)



Width
875mm



Height
400mm

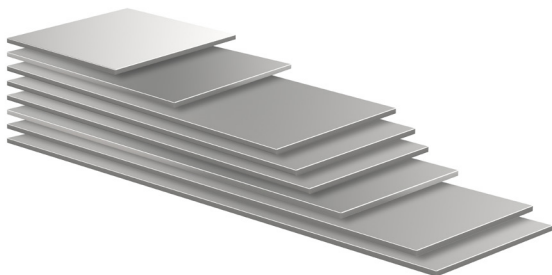


Depth
300mm

#	DESCRIPTION
47965	NEXT MSS corner wall cabinet 875mm



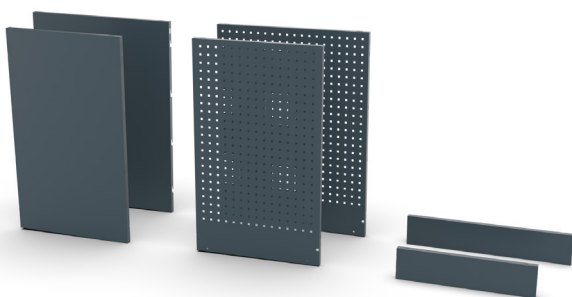
Worktops



#	DESCRIPTION
47977	NEXT MSS stainless steel worktop 674x500x20mm
47984	NEXT MSS stainless steel worktop 845x500x20mm
47978	NEXT MSS stainless steel worktop 1348x500x20mm
47980	NEXT MSS stainless steel worktop 1519x500x20mm
47985	NEXT MSS stainless steel worktop 1690x500x20mm
47982	NEXT MSS stainless steel worktop 2193x500x20mm
47979	NEXT MSS stainless steel extra deep worktop 1348x570x20mm
47981	NEXT MSS stainless steel extra deep worktop 1519x570x20mm
47986	NEXT MSS stainless steel extra deep worktop 1690x570x20mm
47983	NEXT MSS stainless steel extra deep worktop 2193x570x20mm
47987	NEXT MSS stainless steel corner worktop 875x500x20mm

#	DESCRIPTION
47378	NEXT MSS wooden worktop 674x500x40mm
47382	NEXT MSS wooden worktop 845x500x40mm
47279	NEXT MSS wooden worktop 1348x500x40mm
47988	NEXT MSS wooden worktop 1519x500x40mm
47295	NEXT MSS wooden worktop 1690x500x40mm
47306	NEXT MSS wooden worktop 2193x500x40mm
47544	NEXT MSS wooden corner worktop 875x500x40mm

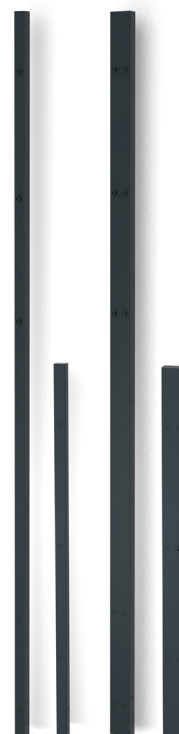
Back panels and posts



#	DESCRIPTION
47966	NEXT MSS perforated back panel 613x30x1038mm
47967	NEXT MSS solid steel back panel 613x30x1038mm
47969	NEXT MSS perforated wide back panel 784x30x1038mm
47970	NEXT MSS solid steel back panel 784x30x1038mm
47968	NEXT MSS solid steel low level back panel 613x30x148mm
47971	NEXT MSS solid steel low level wide back panel 784x30x148mm
47989	NEXT MSS solid steel back panel for bridge unit 843x31x895mm

#	DESCRIPTION
49220	NEXT MSS spacer for use in combination with extra deep worktops. To fill space between back wall and base cabinets.
49221	NEXT MSS decorative side panel for use in combination with extra deep worktops. To fill space between back wall and tall cabinets.

#	DESCRIPTION
47973	NEXT MSS post 60x30x1914mm
47972	NEXT MSS post 30x30x1914mm
47975	NEXT MSS post 60x30x1020mm
47974	NEXT MSS post 30x30x1020mm



Accessoires

NEXT MSS LED LIGHT



#	DESCRIPTION
5999201	LED light, length 600mm
5999202	LED light, length 800mm
5999204	Adaptor for LED light, EU plug
5999205	Connector with switch for LED light
5999206	LED light 600mm (EU) with adaptor+connector
5999208	LED light 800mm (EU) with adaptor+connector
49138	NEXT MSS bracket for adapter. Mounts (lighting) adapter to back panel. Size 122 x 93 x 47mm.

NEXT MSS POWERBAR EU VERSION



#	DESCRIPTION
5999302	The high performance power bars features a tough, anodized aluminium extrusion ensuring strength and durability.

NEXT MSS POWERBAR BRACKET



#	DESCRIPTION
49137	- Finished in matte RAL 7016 to perfectly match the setup. - Easy installation with secure screw connection.

NEXT MSS WALL CABINET TOP TRAYS



#	DESCRIPTION
49147	- Expands storage space above wall cabinet #47963. - Size: 674(w) x 301(d) x 130(h) mm.
49148	- Expands storage space above wall cabinet #47964. - Size: 845(w) x 301(d) x 130(h) mm.

EMPTY TRAY, 5 COMPARTMENTS



#	DIMENSIONS
4720101	W 370 x D 145 x H 48MM <i>Also suitable for S7, S8, S9, S10 toolbox</i>

EMPTY TRAY, 5 COMPARTMENTS



#	DIMENSIONS
4720102	W 370 x D 145 x H 48MM <i>Also suitable for S7, S8, S9, S10 toolbox</i>

EMPTY TRAY, 8 COMPARTMENTS



#	DIMENSIONS
4720103	W 370 x D 290 x H 48MM <i>Also suitable for S7, S8, S9, S10 toolbox</i>

EMPTY TRAY, 12 COMPARTMENTS



#	DIMENSIONS
4720104	W 370 x D 290 x H 48MM <i>Also suitable for S7, S8, S9, S10 toolbox</i>

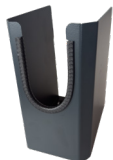
EMPTY TRAY, 18 COMPARTMENTS



#	DIMENSIONS
4720105	W 370 x D 290 x H 48MM <i>Also suitable for S7, S8, S9, S10 toolbox</i>

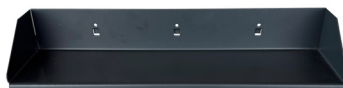
Accessories for perforated back panels

NEXT MSS POWER TOOL BRACKET



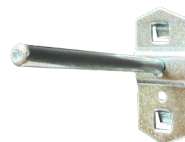
#	DESCRIPTION
49139	NEXT MSS power tool bracket

NEXT MSS STORAGE SHELF 400X60MM



#	DESCRIPTION
49150	NEXT MSS storage shelf 400x60mm

NEXT MSS HOOK STRAIGHT 75MM



#	DESCRIPTION
49143	NEXT MSS hook straight 75mm

NEXT MSS SOCKET HOLDER



#	DESCRIPTION
49152	NEXT MSS socket holder

NEXT MSS HOOK SINGLE 90° 25MM



#	DESCRIPTION
49140	NEXT MSS hook single 90° 25mm

NEXT MSS HOOK U-SHAPED 25X35MM



#	DESCRIPTION
49144	NEXT MSS hook U-shaped 25x35mm

NEXT MSS CAN HOLDER



#	DESCRIPTION
49151	NEXT MSS can holder for 4 (spray) cans

NEXT MSS HOOK SINGLE 90° 50MM



#	DESCRIPTION
49141	NEXT MSS hook single 90° 50mm

NEXT MSS HOOK ROUNDED Ø40MM



#	DESCRIPTION
49145	NEXT MSS hook rounded Ø40mm

NEXT MSS STORAGE BIN



#	DESCRIPTION
49149	NEXT MSS storage bin W 200x D 100x H 60mm

NEXT MSS HOOK SINGLE 90° 200MM



#	DESCRIPTION
49142	NEXT MSS hook single 90° 200mm

NEXT MSS HOOK BRACKET 30X60MM



#	DESCRIPTION
49146	NEXT MSS hook bracket 30x60mm



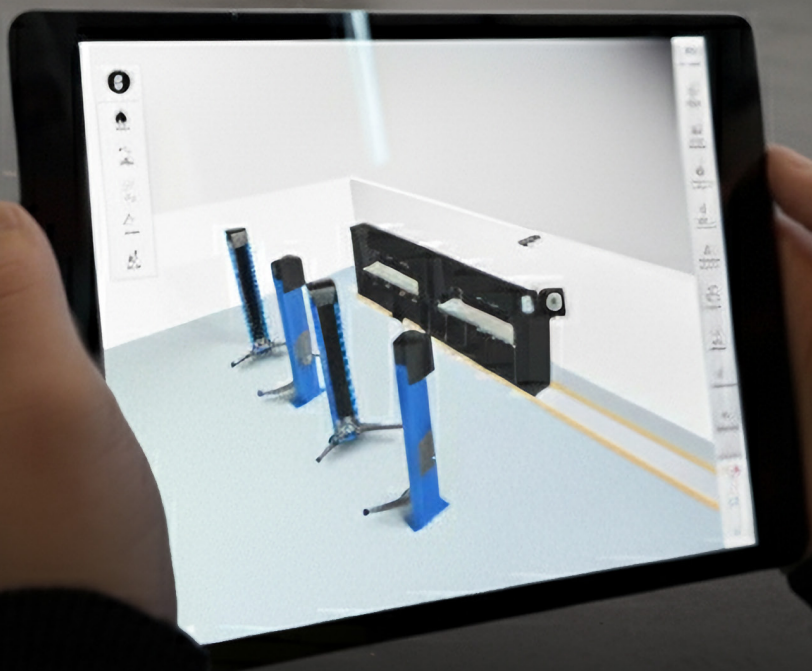


Design your ultimate setup.

The Sonic Configurator empowers you to take full control of your workspace, simplifying the process of planning, designing, and optimizing your workshop layout. Whether you're starting fresh or remodeling an existing space, the Sonic Configurator helps you visualize your ideal workflow with precision.



**SCAN THE QR CODE
AND START CREATING
YOUR DESIRED LAYOUT**



Setups



#	DESCRIPTION
4930901	3 module setup - 1958mm. Stainless steel + hangerboard
4930709	3 module setup - 1958mm. Stainless steel + Solid back panels
4930801	3 module setup - 1958mm. Wood + hangerboard
4930601	3 module setup - 1958mm. Wood + solid back panels



#	DESCRIPTION
4930902	3 module setup - 2300mm. Stainless steel + hangerboard
4930710	3 module setup - 2300mm. Stainless steel + Solid back panels
4930802	3 module setup - 2300mm. Wood + hangerboard
4930602	3 module setup - 2300mm. Wood + solid back panels



#	DESCRIPTION
4930903	4 module setup - bridge - 2803mm. Stainless steel + hangerboard
4930711	4 module setup - bridge - 2803mm. Stainless steel + Solid back panels
4930803	4 module setup - bridge - 2803mm. Wood + hangerboard
4930603	4 module setup - bridge - 2803mm. Wood + solid back panels



#	DESCRIPTION
4930904	4 module setup - 2803mm. Stainless steel + hangerboard
4930712	4 module setup - 2803mm. Stainless steel + Solid back panels
4930804	4 module setup - 2803mm. Wood + hangerboard
4930604	4 module setup - 2803mm. Wood + solid back panels



#	DESCRIPTION
4930401	Low setup - 2193mm. Wooden worktop.
4930501	Low setup - 2193mm. Stainless steel worktop.





Width
5026mm



Height
2000mm



Depth
530mm

#	DESCRIPTION
4930906	Corner setup - bridge - 5026mm. Stainless steel + hangerboard
4930714	Corner setup - bridge - 5026mm. Stainless steel + Solid back panels
4930806	Corner setup - bridge - 5026mm. Wood + hangerboard
4930606	Corner setup - bridge - 5026mm. Wood + solid back panels



Width
4524mm



Height
2000mm



Depth
530mm

#	DESCRIPTION
4930905	6 module setup - 4524mm. Stainless steel + hangerboard
4930713	6 module setup - 4524mm. Stainless steel + Solid back panels
4930805	6 module setup - 4524mm. Wood + hangerboard
4930605	6 module setup - 4524mm. Wood + solid back panels



For more information, consult our website or catalogue. Printing, pricing and typographical errors reserved. All previous versions are superseded with this brochure. Resellers can request the Sonic pricelist 2025 via info@sonic-equipment.com

**GET MORE
DONE**

SONIC EQUIPMENT BV
Component 114 - 116
1446 WP Purmerend
The Netherlands
Tel. +31 299 437 000
info@sonic-equipment.com

