



# Healthcare

Explore the World of IoT **Like Never Before!**





# Facts about 1NCE in Healthcare

Our customers are active in several use cases like [Pill Dispensers](#), [Hospital Monitoring](#), [Remote Patient Monitoring](#), and [many more](#).

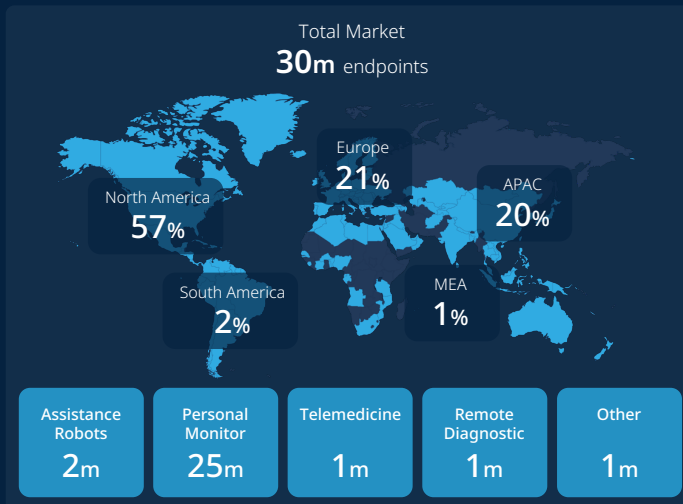


[Click for SIM Types](#)

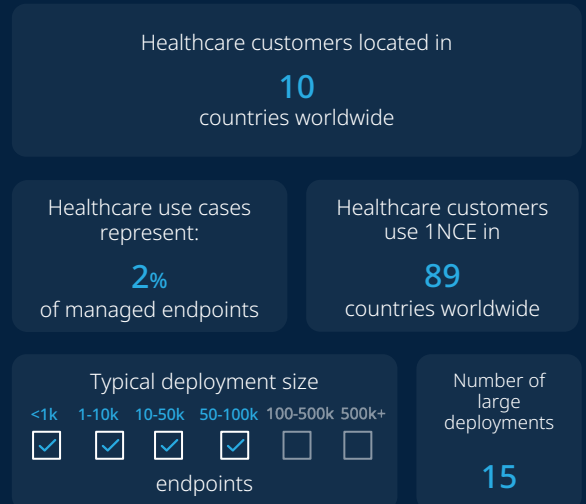
## Benefits

- Monitor patients remotely and improve healthcare delivery.
- Optimize operations and improve efficiency for better patient care.
- Safeguard medication management and ensure patient well-being.
- Efficient asset tracking for a well-equipped healthcare environment.
- Give patients the tools to manage their health more effectively.

## Relevance of Healthcare use cases for the IoT market



## Footprint 1NCE in the Healthcare Sector



## Full Control of Healthcare Data

The leading IoT connectivity provider, **with 1NCE you get more.**

Talk to us about one SIM, one lifetime price, and global coverage.

- No roaming fees or zones
- No activation fees
- No monthly recurring costs

### 1NCE in a Nutshell



**23k**  
Customers Worldwide



**30m**  
SIMs in Management



**60**  
Fortune 500 companies



**173**  
Countries covered

Explore more:

[Healthcare](#) [Customer Insights](#) [Success Stories](#)



# Why choose 1NCE?



## Low and transparent operating costs

1NCE delivers pre-paid global cellular connectivity at a fixed price that lasts the entire lifetime of the device:

**10 EUR for 10 years**, which breaks down to less than 10 cents per month per device. Pay once and never worry about connectivity for your IoT project again.



## A connectivity solution that scales

The **1NCE IoT Lifetime Flat** comes with no additional costs. No extra charges for setup, roaming, or support. SIM cards are delivered ready-to-use with no activation necessary. This allows rapid and uncomplicated mass rollouts of devices in the field.

## Technology that grows with your business

1NCE supports all current mobile network standards from 2G, 3G, 4G, NB-IoT and LTE-M on a single SIM card. Seamless network switching with no extra fees ensures the best possible network coverage for each individual use case. Replace old IoT devices as needed and smoothly phase-out any legacy network infrastructure.

2G ✓

3G ✓

4G ✓

LTE-M ✓

NB-IoT ✓



## Software tools for easy integration

The 1NCE IoT Lifetime Flat includes a unique toolset of software, that helps you implement, manage and optimize your devices. 1NCE OS is included and comes with a well-documented API that allows for easy integration into your own software services. OpenVPN capabilities give your solution added security to support even in the most demanding environments.



## Strong partnerships

1NCE is a strategic partner of communications giants like Softbank and Deutsche Telekom AG. 1NCE uses the network access structure of Deutsche Telekom and its roaming partners currently covering 173 countries and regions worldwide. Today, 1NCE has over 30 million licenses and more than 23,000 customers worldwide.

Connect with us:

[1NCE.com](https://1nce.com)

[sales@1nce.com](mailto:sales@1nce.com)





# Get started **today.**



[1NCE Shop](#)



[Healthcare References](#)



[Contact](#)



[Knowledge Base](#)

Connect with us:

[1NCE.com](https://1nce.com)

[sales@1nce.com](mailto:sales@1nce.com)

[in](#)

[X](#)

[f](#)