

**KOMI**

**steriti**

# GROUND SUPPORT VEHICLES & EQUIPMENT LIFTING



SUPERIOR  
QUALITY  
**HYDRAULIC**  
VEHICLE  
LIFTS

**GSE LIFTING SOLUTIONS**

BE THE SPECIALIST | STAY FOCUSED | SHAPE THE FUTURE



# NO. 1 IN HEAVY DUTY LIFTING

Stertil-Koni provides a complete range of heavy duty vehicle lifts and lifting equipment for customers all over the world. All Stertil-Koni vehicle lifts are designed and manufactured in-house by a team of specialists with expertise in the heavy duty vehicle lifting industry. Stertil-Koni is represented across the globe by local sales organisations, exclusive Stertil-Koni distributors, and a network of qualified Stertil-Koni service partners. This makes Stertil-Koni the Number 1 in heavy duty vehicle lifting around the world.



# SAFE, RE

Safety, efficiency and reliability are essential in the fast world of the aviation industry. Stertil-Koni offers the most effective lifting solutions for maintenance and repair of heavy duty GSE vehicles and equipment within the shortest time possible. Very suitable for extra large wheel dimensions and vehicles with low floor clearance and chassis.



Safety



Ergonomic



Efficiency



# RELIABLE, EFFICIENT

Keeping GSE continuously in optimal condition and on standby to service and support flights 24/7/365 requires the best possible vehicle lifts. Steril-Koni is the specialist in the aviation maintenance industry and preferred supplier to major airlines, airports, ground handlers, and GSE maintenance and repair companies around the world. Listening to the requirements of our ground support customers means that we can offer lifting solutions which fits the every day requirements of these busy workshops.

Steril-Koni wireless mobile column vehicle lifts offer maximum safety, reliability, efficiency and mobility. No external power source or interconnecting cables are needed - all with minimum set up time. The ideal solution for both fixed workshops and jobs to be done on the spot. Totally maneuverable and with ample working space for mechanics to move safely and freely around and under the lifted equipment. Our lifts contribute to the better well-being of workshop personnel and reduce the risk of industrial injuries.





# A SOLUTION FOR ALL TYPES OF GSE WORLDWIDE

- Aircraft tow tractors
- Pushback tugs
- Fuel tankers
- Stair trucks
- Belt loaders
- Baggage tugs
- Cabin service trucks
- Airport buses
- Portable water trucks
- Cargo loaders

You can make all the difference in your uptime and productivity with Stertil-Koni lifting solutions. Ensuring a high return on investment and optimal working conditions for workshop personnel.

# FREEDOM OF MOVEMENT WITH WIRELESS MOBILE COLUMN LIFTS



**MOBILE LIFT**

Stertil-Koni offers various models of mobile column vehicle lifts for inspection, maintenance and repair of your entire fleet of Ground Support Equipment. BIG AND EXTREMELY HEAVY, that's what these mobile column lifts can cope with in terms of lifting vehicles or equipment.

## Optimum flexibility and easy to use

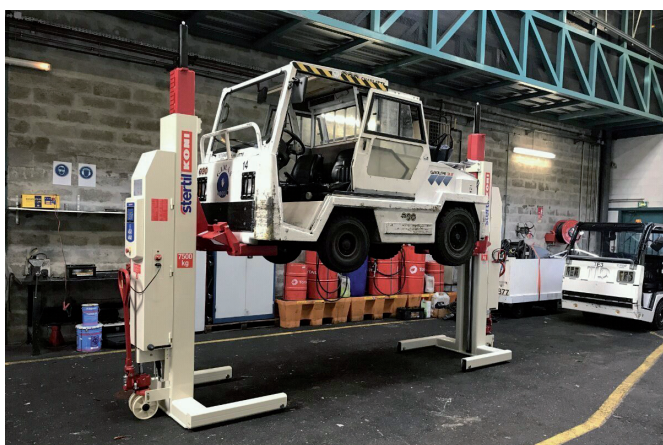
Mobile columns are ideal in busy workshops where the vehicle lifts need to be frequently relocated. The solution for rented hangars, as mobile columns do not require any construction or civil works. Lifting capacities range from 6,500-17,500 kg per mobile column lift. Up to 32 columns can be connected in one single set and fully synchronised - all with no interconnecting cables, so no tripping hazards.

- Drive-away protection.
- Fully independent mechanical locking system for ultimate safety.
- Wireless controlled configuration for synchronised smooth lifting and lowering, even in cases of an extremely uneven load distribution.
- Locking pawl engaged by gravity. The locking system is

always active, even when the column is turned off.

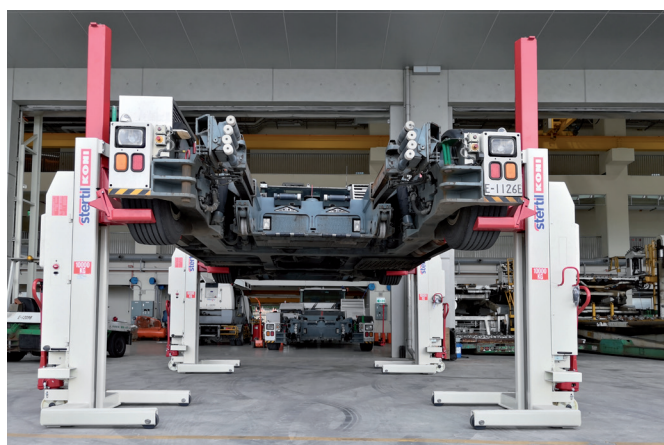
- Maximised vehicle-to-column distance.
- Automatic overload protection.
- Each column has an emergency stop.
- Operation with **ebright Smart Control System**.
- Low voltage system.
- Splash-proof electrical system (IP 65).
- Low surface pressure wheels.
- Even longer lifting cycles and less battery-charging with the environmentally-friendly regenerative **EARTHLIFT®** version, available in lifting capacities of 8,500 kg, 10,000 kg and 13,000 kg per column.





## ST 1085

- Lifting capacity per mobile column: 8,500 kg.
- Adjustable pick-up forks with a fork length of 350 mm, ideal for picking up vehicles with super single tyres.
- Fork width 240-560 mm.
- Suitable for wheel diameters of 500-1,140 mm, and extra wide version available 500-1,500 mm.
- Maximum lifting height of 1,850 mm.
- Lifting time 94 seconds.



## ST 1100

- Lifting capacity per mobile column: 10,000 kg.
- Adjustable pick-up forks with a fork length of 300 mm, ideal for picking up vehicles with super single tyres.
- Fork width 240-560 mm.
- Suitable for wheel diameters of 500-1,140 mm, and extra wide version available 500-1,500 mm.
- Maximum lifting height 1,850 mm.
- Lifting time 94 seconds.



## ST 1130

- Lifting capacity per mobile column: 13,000 kg.
- Detachable fixed pick-up forks with a fork length of 650 mm.
- Fork width 1,006 mm.
- Suitable for vehicles with wheel diameters starting from 1,400 mm - 2,200 mm, with an average tyre width of 950 mm. Ideal for equipment like pushbacks.
- For additional wheel diameters special sets of adapters are available for ranges from 950 mm - 1,400 mm.
- Maximum lifting height of 2,060 mm.
- Lifting time 215 seconds.



## ST 1175

- Lifting capacity per mobile column: 17,500 kg.
- Detachable fixed pick-up forks with a fork length of 450 mm.
- Fork width 806 mm.
- Suitable for vehicles with wheel diameters starting from 1,000 mm - 1,700 mm, with an average tyre width of 675 mm.
- For additional wheel diameters special sets of adapters are available for ranges from 760 mm - 1,000 mm.
- Maximum lifting height of 2,060 mm.
- Lifting time 125 seconds.

# ADAPTERS & ACCESSORIES

Stertil-Koni can provide advice depending on your requirements.

- **Crossbeams:** lift equipment by the chassis and are ideal for extremely low ground clearance.
- **Base Frame & Fork Extensions:** utilised in conjunction to lift vehicles with inset wheels and to get deep into the chassis.
- **Transmission Jacks:** for safe removal or positioning of gearboxes.
- **Wheel Dollies:** for lifting wheels more easily and ergonomically.
- **Forklift Adapters:** available for 4 and 3-wheel forklift trucks for use in combination with mobile column lifts where 2-column lifts are utilised.



Crossbeam



Wheel Dollies



Multi Adapters

- **Axle Stands:** available in various heights with capacities of 8,500 – 12,000 kg. A precision adjustment option is available on all the axle stand models.
- **Trailer King-Pin Adapter:** ideal for mobile column lifts to lift trailers.
- **Large Wheel Adapters:** for vehicles and equipment with extremely large diameter wheels.
- **Drive-on Ramps:** ideal for low clearance vehicles and equipment.



Forklift Adapter



Axle Stands



# EASY AND SECURE OPERATION

The patented ebright Smart Control System is unique to Stertil-Koni vehicle lifts. A very intuitive diagnostic safe control system.

- Full-colour 7" touchscreen.
- ID-Key to prevent unauthorised operation.
- Adjustable lifting and lowering speed.

- All relevant operational information at a glance.
- Access to Operating Manual.
- To operate columns individually, in pairs or in any other configuration (up to 32 columns) from a single location.
- Any column can be made a master column.
- Stable, wireless connectivity.
- Battery and service diagnostics.
- Can be operated using gloves.




## More information

For more information about our mobile columns for the GSE industry or one of our other heavy duty vehicle lifts, please contact us for further assistance.



Stertil B.V.  
P.O. Box 23  
9288 ZG Kootstertille  
The Netherlands  
Tel. +31 (0)512 334444  
[www.stertilkoni.com](http://www.stertilkoni.com)  
[vehiclelifts@sterdil.nl](mailto:vehiclelifts@sterdil.nl)  
Stertil-Koni Stertil-Koni  
@Stertil Stertilkoni

 member of Stertil Group