

BAUWERK

Parkett

Press release

Between Past and Present

Restored building fabric blends with modern interior design in Zurich's historic Sihlporte office building. Spinpark by Bauwerk Parkett acts as an artful link between historic parquet, terrazzo, and new materials.



Nestled in the heart of central Zurich, just a few steps from Bahnhofstrasse and the main train station, the Sihlporte building ranks among the most distinctive office and business addresses at the city's centre. The third floor of this impressive structure was redesigned as part of a comprehensive renovation commissioned by the Barandun international law firm. The client engaged the JOP Architekten architecture firm to develop the design and create a working environment that exudes prestige while meeting the needs of modern office spaces.

“Our goal was to preserve the character of this 1930s building, while creating a modern and functional work environment”, explained Klaudija Oroshi from JOP Architekten, which has offices in Berlin, Frankfurt, and Zurich. This involved keeping and carefully restoring numerous historical elements, including wall panelling, door fittings, and stucco ceilings. The design blends classic interior details with sleek, contemporary indoor architecture. The streamlined lighting concept features chandeliers positioned at specific points to evoke an elegant, almost homely atmosphere in the spaces.

Bauwerk Group Schweiz AG

Neudorfstrasse 49, CH-9430 St. Margrethen, Phone +41 71 747 74 74, info@bauwerk.com bauwerk-parkett.com

[Facebook](#), [Instagram](#), [LinkedIn](#), [YouTube](#) [Pinterest](#)

BAUWERK

Parkett

“This combination of historical elements and new materials should look natural – like another evolution of the existing architecture”, interior architect Klaudija Oroshi added.

Careful handling of historical material

The interior spaces follow a carefully coordinated material concept that combines high-quality, durable materials. Travertine has been partially reused and can now be seen in the reception area. Refined bronze elements serve as subtle accents and have been reused, for instance, in the kitchen design. Warm colour tones and natural materials create a calm, focused working environment that one would expect from the office of a prestigious law firm. “The lighting, selection of materials and colour concept facilitate a dialogue between the past and the present that gives the building a natural quality that it did not previously have”, said Klaudija Oroshi.

The floor as unifying design element

The flooring is a crucial element of the indoor design concept. Different materials are used to add structure in the rooms and ensure visual harmony throughout the storey. The restored herringbone parquet in the protected-heritage meeting rooms marks the historic origin. Mineral surfaces, such as terrazzo, provide a deliberately contrasting accent elsewhere.

It is within these materials that the unifying effect of Bauwerk Parkett’s Spinpark parquet collection truly reveals itself. In the entrance, hallways, lounge, and administrative support areas, it offers an elegant surface that connects different zones seamlessly. JOP Architekten incorporated this flooring early in their development of the material and colour concept to create an overall look that harmonises historic elements with new materials.

The warm oak wood of Spinpark in Avorio colour enhances the natural quality of the historic spaces and offers a modern reinterpretation. The high-quality 2-layer parquet stands out for the 45-degree rotation of its grain, which adds subtle dynamism and graphic depth to the floor. Its Swiss manufacturer, having its headquarters in St Margrethen, developed the Spinpark parquet collection in conjunction with the Swiss architecture and design firm atelier oï. The special cutting technique and diagonal orientation of the wood grain give the floor a striking appearance, opening up new possibilities for design.

Harmonious landscape of materials

Besides the quality of Spinpark’s design, its material quality was the main deciding factor for JOP Architekten. “The new parquet floor integrates seamlessly into the historic environment thanks to its high-quality look and timeless aesthetic”, highlighted Klaudija Oroshi. “We were particularly impressed by the clever idea of rotating the grain of the

BAUWERK

Parkett

wood. Spinpark's fine and intricate appearance brings a subtle dynamic to the room without overpowering the architecture."

Its combination with the restored parquet and the mineral flooring creates a harmonious blend of materials. The floor serves as a surface that bridges the past and the present, supporting the architectural concept of delicately developing the original building. "For us, Bauwerk Parkett means a combination of top design standards and timeless elegance: a perfect foundation for challenging projects with a historical context", explained Klaudija Oroshi from JOP Architekten.

JOP Architekten also use Bauwerk Parkett's products in their other projects. Following the collaboration in Zurich, there are already plans for another project with the Barandun law firm, for their office in Zug, which will also feature parquet by the Swiss manufacturer.

Details and facts

Project: Barandun Law Firm, Sihlporte Zurich (CH)

Address: Löwenstrasse 1+3, Zurich (CH)

Building type: office building/law firm

Activity: building conversion

Client: Barandun AG, Zurich (CH), www.barandun-law.ch

Architecture/interior architecture: JOP Architekten, Berlin/Frankfurt/Zurich, www.jop-architekten.com

Completion: 2025

Project area: approx. 1,000 m²

Parquet by Bauwerk Parkett: 200 m² Spinpark, Oak Avorio in a lively grading, natural-oiled

Installation partner: Kurt Wohndesign, www.kurtwohndesign.ch

Photos: René Dürr Architekturfotografie

For press enquiries, please contact:

Rainer Häupl

bering*kopal GbR, communications agency

P + 49 (0) 711 74 51 75916

rainer.haeupl@bering-kopal.de

www.bering-kopal.de

St Margrethen (CH), April 2026

Reprint free of charge/specify source

BAUWERK

Parkett

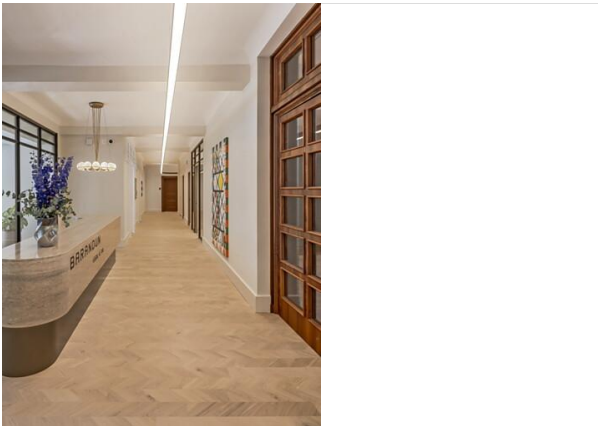
1 The conversion of the third floor of the historic Sihlporte office building in Zurich combines restored building fabric and contemporary interior architecture. Photo: René Dürr Architekturfotografie

2 The protected historic Sihlporte office building was constructed in the 1930's, near Zurich's train station; its ground floor currently houses shops, a cafe and a pharmacy. The upper floors accommodate doctor's clinics and law firms, including Barandun, which leases the third floor. Photo: René Dürr Architekturfotografie

3 JOP Architekten was commissioned to design the interior architecture for Barandun's office. The new Spinpark parquet by Bauwerk Parkett creates a high-quality, natural atmosphere in the entrance area, hallways and lounge. Photo: René Dürr Architekturfotografie

4 "For us, Bauwerk Parkett means a combination of top design standards and timeless elegance: a perfect foundation for challenging projects with a historical context", explained Klaudija Oroshi from JOP Architekten. Photo: René Dürr Architekturfotografie

1.



2.



3.



4.



BAUWERK

Parkett

5 The Spinpark parquet collection serves as a connecting element between different flooring materials, such as terrazzo... Photo: René Dürr Architekturfotografie

6 ...and historic parquet. Photo: René Dürr Architekturfotografie

7 Spinpark stands out for its 45-degree rotation of the wood grain. The resulting graphical structure adds a subtle dynamic to the floor, while blending seamlessly with the office's high-quality interiors. Photo: René Dürr Architekturfotografie

8 The meeting rooms retained their historical herringbone parquet. Chandeliers placed at individual points create an elegant, almost homely mood. Photo: René Dürr Architekturfotografie

5.



6.



7.



8.



BAUWERK

Parkett

Bauwerk Parkett – Built for a lifetime

What began in 1935 with the invention of solid parquet by Swiss pioneer Ernst Göhner is still setting new standards for ambitious design and healthy living today. Just like every tree and every piece of wood, each of our responsibly manufactured planks is sustainable and unique. A fusion of Swiss engineering and authentic nature results in extraordinary living experiences: today, and for future generations.

bauwerk-parkett.com