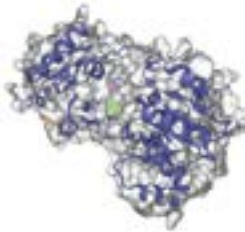


Small Molecule Program IN-2401: A first-in-class opportunity in CRC



Small molecule for late-stage CRC patients

Member of the RNA-helicase family and highly relevant for metastatic CRC

Our pipeline frontrunner - your partnering opportunity

Target selection core aspects

- Over-expressed in CRC
- High expression correlates with poor survival
- Favorable druggability
- No competitive programs identified

Crucial role in tumor biology

Essential in the development and progression of various cancers through regulation of gene expression and cellular behavior

Therapeutic potential

Due to involvement in cell cycle, RNA processing and signaling, RNA helicases are a promising target class for targeted therapies

Cell cycle and metastasis

Significantly influence cell cycle regulation, promoting tumor proliferation and survival

Key signaling pathways

Involved in major signaling pathways, affecting tumor initiation, progression, and metastasis

Status: ongoing validation – Hit identified

Interested in licensing or co-development opportunities?

Let's connect and start the conversation. Contact us at:
business-development@indivumed.com