

General information about installation and the product

Please read this manual carefully before installing and commissioning the product. Failure to follow the safety instructions may result in serious injury or property damage.

⚠ PLEASE NOTE: BauWatch is not liable for damage resulting from improper use or disregard of safety instructions.

Installation information

- // Before you begin, carefully read the **Safety Instructions** in this document.
- // Follow the installation and commissioning steps as described later in the manual.
- // If you have any questions or concerns, please contact your BauWatch representative.

Product information

- // Power supply: -This product is powered by 230VAC.
 - Do not lay power cables across driveways or use cable bridges/drive protection.
 - This product is equipped with backup power in the event of a power failure.
 - Lock the construction site power distribution boards if necessary.
- // Lightning: The lighting is automatically activated at dusk and switches off automatically as well.
- // Earthing: This product is connected to shore power and therefore connected to earth. If additional earthing is required at high-risk locations, BauWatch must install an additional earthing cable at an approved earthing point provided by the customer.
- // Measurement in transport mode:
 - Size in cm 115 × 115
 - Weight in kg 418
 - Height in cm 270

EC or UK Declaration of conformity:



A product-related EC (CE) or UK (UKCA) declaration of conformity is available on request. Please contact your BauWatch representative for more information.

// How to install or relocate a BauWatch Greenlight One tower



Safety instructions

Always wear the following personal protective equipment when working on the mast:



Safety helmet



Safety shoes



Protective gloves




Eye protection



Ear protection




Safety vest


**WARNING**

- In wind force 9 or higher, the mast must be retracted (RISK OF ACCIDENTS)!
- It is prohibited to work on or in the immediate vicinity of our tower systems during thunderstorms or storms!
- It is prohibited to work on or in the system cabinets in the tower and/or on the tower top end. This may only be carried out by authorised Bauwatch personnel!
- It is prohibited to attach third-party products to the towers!
- Ensure that the four support legs do not protrude onto the roadway and secure them correctly!
- Do not force doors or covers open!


Be extra alert when the following icons are displayed:




Warning of fall hazard
You may need to work from an elevated position using an aid. There is a risk of falling.




Warning of sharp objects
You may come into contact with sharp or pointed objects or corners. There is a risk of puncture wounds and cuts.



Warning of hand injuries
There is a risk of injuring your hands through crushing.

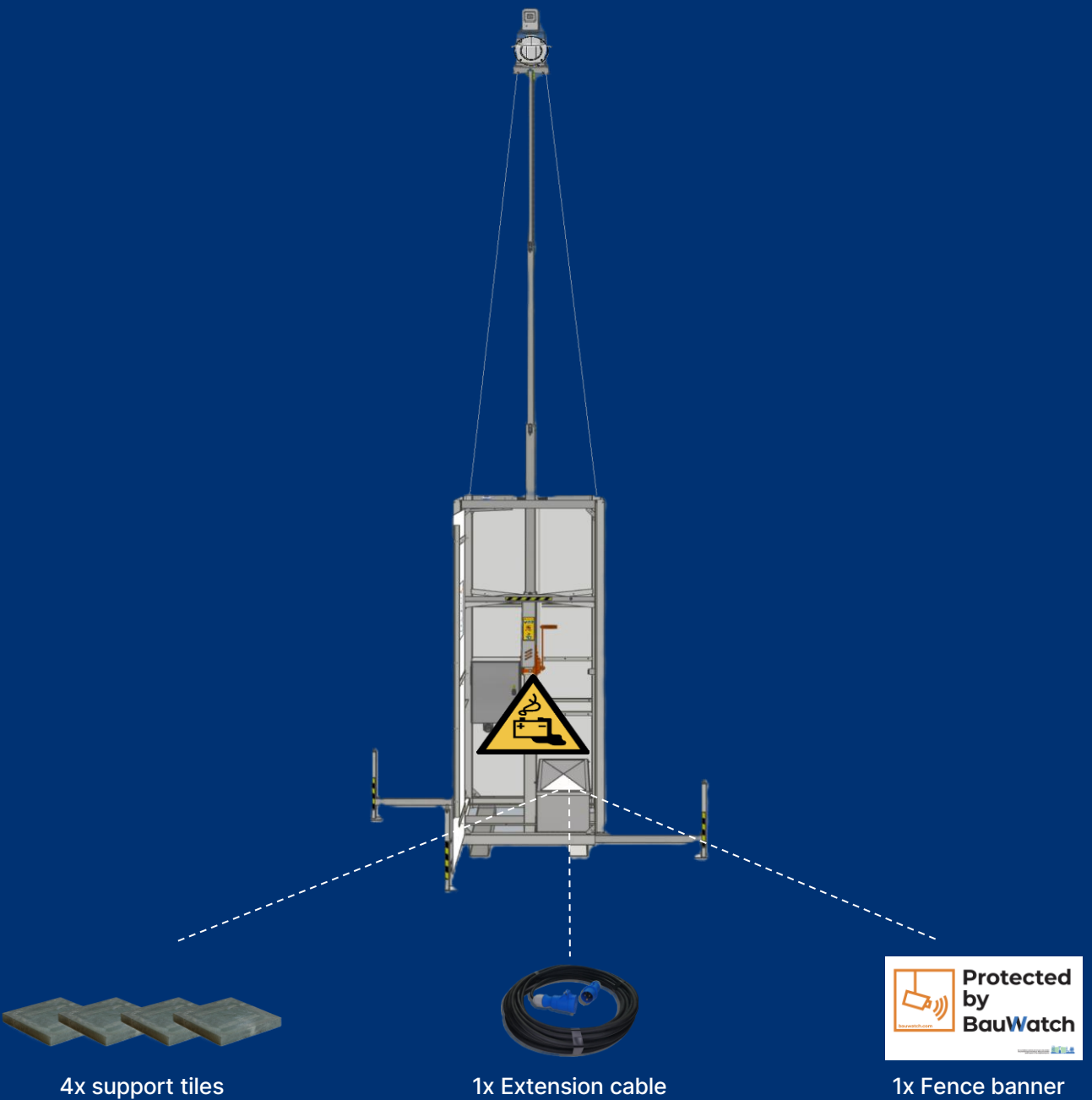


Warning of hazards when charging batteries
Gas-air mixtures (known as oxyhydrogen gas) may be produced, which are potentially explosive. Avoid sources of ignition and ensure good ventilation.



Warning of electrical voltage
There is a risk of exposing the body to electrical voltage, which can be potentially hazardous to health or life-threatening.

Required equipment
(Inside the battery compartment)



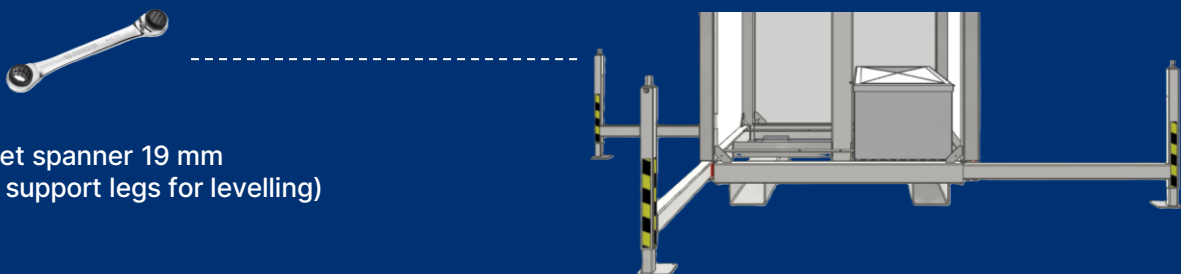
4x support tiles

1x Extension cable

1x Fence banner

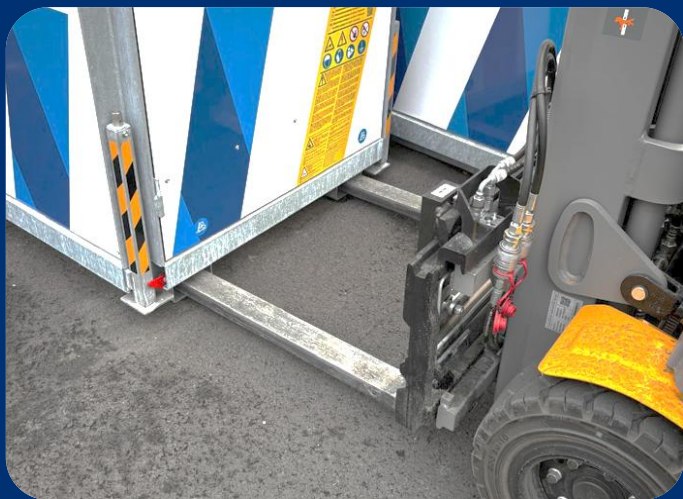
Protected by BauWatch

Additional tool required



(socket) ratchet spanner 19 mm
(To adjust the support legs for levelling)

Transporting with a forklift



1. Always use the sleeves for the forks of the forklift truck.



2. Tilt the tower backwards when transporting it with the forklift truck.

Transporting with a crane on a truck



3. Use an approved lifting chain (minimum 2-leg) crosswise to hoist the tower. Use the hoist-eyes.



4. Position the stakes to prevent sliding.



5. Secure the tower using a lashing strap, taking care to ensure that the frame does not bend.



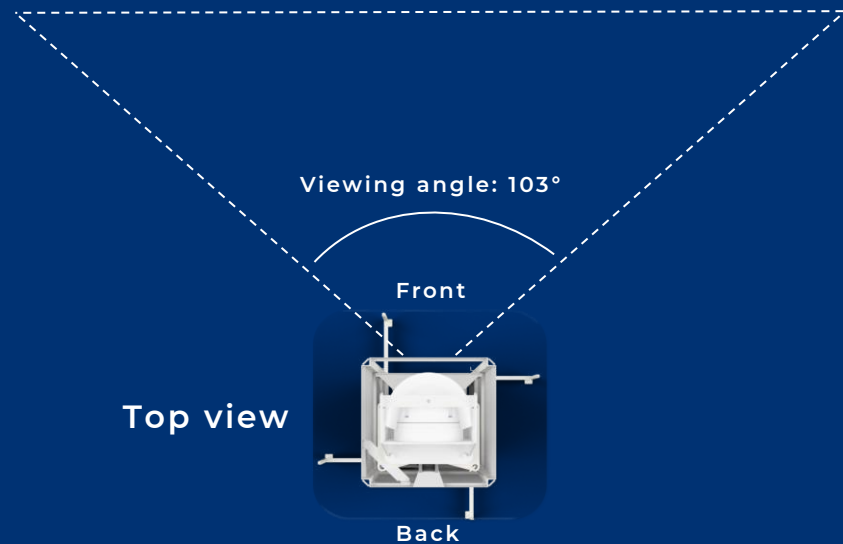
6. Secure the excess length of the lashing strap.

Preparation for the installation of the tower

To enable smooth operation and avoid false alarms and safety problems, correct installation is an important first step in project realization. The following points contribute to this:

- // Position according to projection, if available.
- // Do not place towers on containers or roofs
- // Place the tower on a stable and firm surface to prevent excessive wobbling of the tower.
- // Place the tower within a radius of 25 meters from a power outlet.
- // Clean the lenses thoroughly if necessary.
- // Avoid fluttering objects in the image (bushes, tarpaulins, etc.) if possible.
- // Avoid reflective surfaces in the image (water, glass, etc.) if possible.
- // Avoid possible glare in the camera (headlights, cars, etc.) if possible.
- // Avoid placing towers next to steep slopes.
- // Do not place towers under light points/lamps.

PLEASE NOTE: The camera has a fixed position with a viewing angle of +/- 103 degrees, so take this into account when positioning it.

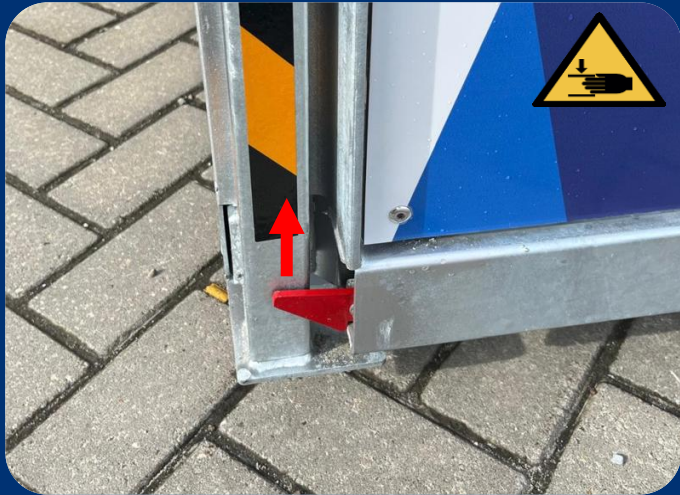


Please contact the BauWatch service desk before commencing work on the tower:

 **+44 16 0460 0745**

Please have your customer details ready, along with the BW number (top left of the door).

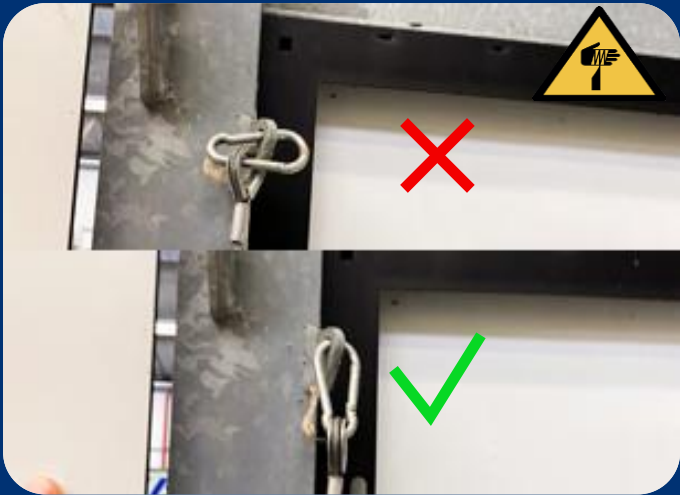
Install & commission the Greenlight One tower on site



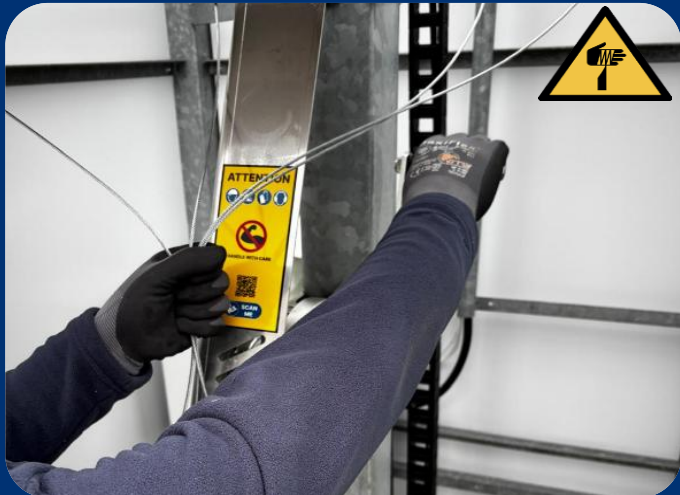
1. Turn the red lock upwards to pull out the support legs.



2. Pull the support legs out and place a tile underneath. Use the 19 mm spanner to unscrew the legs. Use this to level the tower.



3. Before raising the mast, check that the hooks of the guy wires can move freely in the hole.



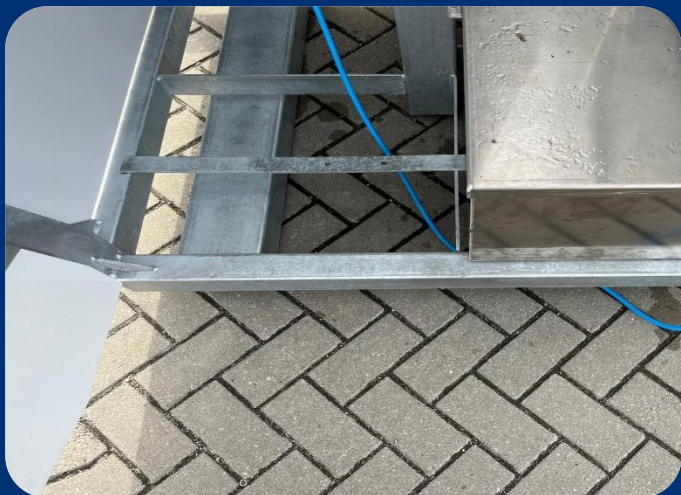
4. Hold the guy wires loosely and guide them as you raise the mast. Make sure that the guy wires do not get caught on anything.



5. Before the mast is fully extended, check the hooks again to ensure they are still secure.



6. Extend the mast fully until the guy wires are taut. **Please note:** do not turn it with excessive force!



7. Pull the cable with the CEE plug through the bottom of the frame so that it does not get caught between the door.



8. Connect the CEE plug to the system cabinet and lock it by turning the retaining ring.



9. Connect the other end to a suitable power outlet, ensuring that the red label is visible so that the cable cannot be easily removed.



10. **First** contact the BauWatch service desk (see below) to activate the tower before placing the padlock. **Please note:** keep the key in a safe place!

Please contact the BauWatch service desk for activation:

 **+44 16 0460 0745**

Please have your customer details ready, along with the BW number (top left of the door).



bauwatch.com

Follow us:

