



BAD Consultant

Bakri & Associate Development
Consultant

&

YAMASAKI

Pre-
Qualifications

ARCHITECTURE
ENGINEERING
PLANNING

B



TABLE OF CONTENTS

CONSULTANCY PROFILE

TEAM ORGANIZATION

PROJECT EXPERIENCE

PROJECT OVERVIEW

ORGANIZATION CHART

KEY STAFF ROSTER

REFERENCES



Breathing inspiration

Architectural madness

Development is a creative journey

Planners, architects and interior designers





Firm Profile

About us

Bakri & Associate Development Consultant (formally FSSC) was founded in 2011.

BAD Consulting established a strategic alliance of International, regional and local architectural firms and engineering companies to provide highest caliber professional project development and design services capability from its offices in Dubai, United Arab Emirates to the benefit its clientele in the gulf region and around the world.

"BAD alliance combines over six decades of experience in urban Planning and full range of architectural, engineering and interior design services for governmental and private sector works including urban Planning, bridges, airports and related facility, medical and industrial as well as various facilities."

BAD provides clients with the most comprehensive set of end-to-end planning, architectural and creative services available in the marketplace today. Taking that model to the next level with services like interior design and intelligent engineering. Creating fluid, cohesive, sustainable environments that serve the needs of today and stand the test of time.



Expertise

Architecture
Planning and urban design
Engineering

Architecture

With experience in nearly all project types, our architecture studios combine outstanding design skills with superior project management capabilities to shape communities and organizations around the globe.

We offer facilities consulting, architectural design, sustainable design, specifications, and construction administration.

Planning & Urban Design

Our planning group creates visually exciting and economically viable settings in which people live, work and shop.

Drawing on decades of experience, planners and urbanites create projects that establish logical frameworks, enhancing cooperation between public and private interests, and spark a sense of civic and community pride.

Structural & Civil Engineering

Our innovative structural and civil engineering studio strives to overcome the physical limitations of sites while also meeting the requirements of each project.

MEP Engineering

Our mechanical, electrical, and plumbing engineers offer clients a full complement of services dedicated to efficient system operations and technological innovation.

Sustainability

From project conception to completion, FSSC implements sustainable design practices ranging from the use of environmentally friendly products to LEED® Certification.



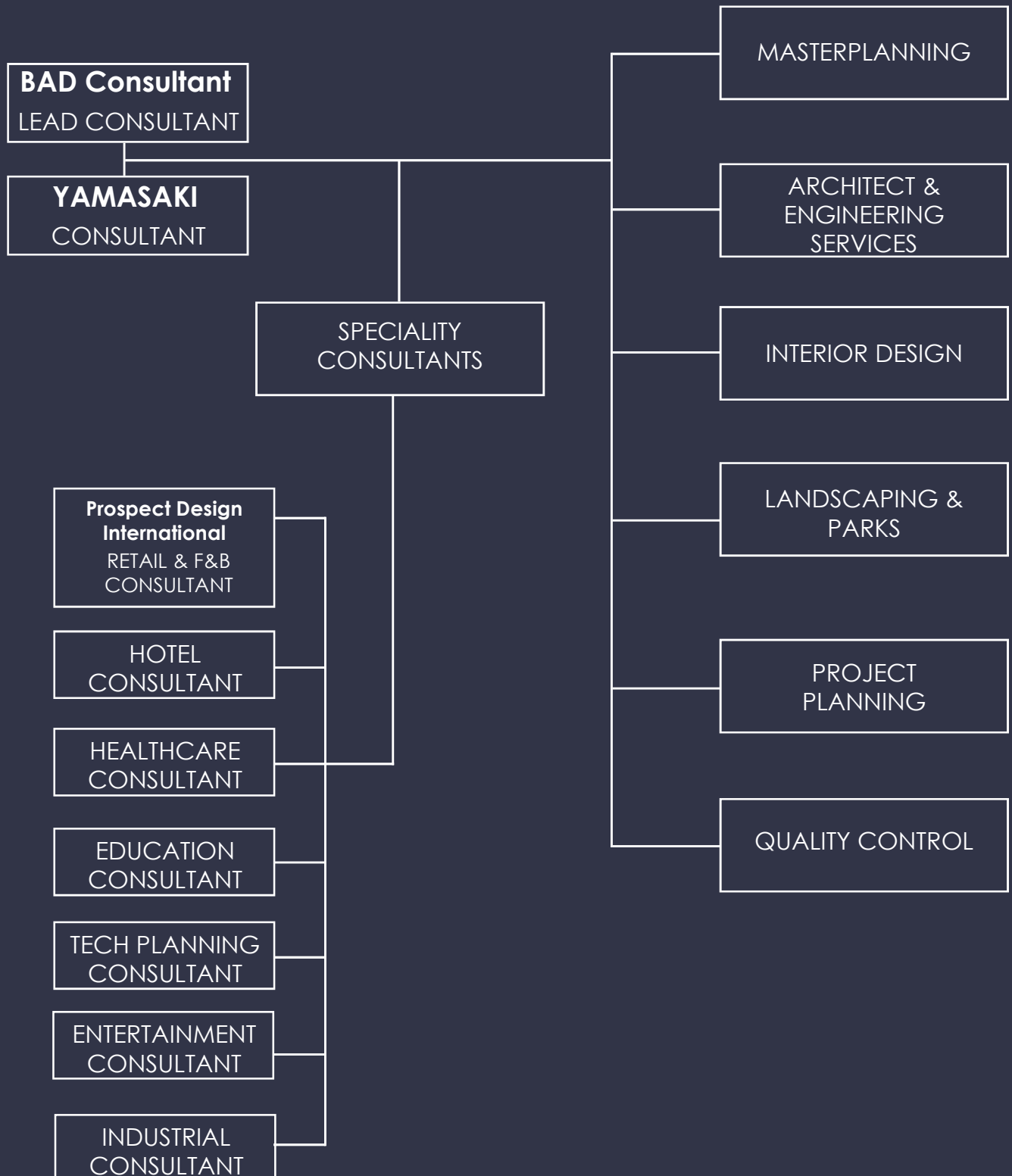
BAD is a full service architectural consultant specializing in a full range of architectural engineering and interior design services for governmental and private sector works. We provide design solutions for the built environment that have relevance to its context by creating fluid, cohesive, sustainable proposals that serve the needs of today and stand the test of time.





TEAM ORGANIZATION

GOLD LAND REFINERY CITY



PROJECT EXPERIENCE



MIXED-USE

NGANGANIA RIVER CITY

Republic of the Congo

AKON CITY

Senegal

DLC

Senegal

AL RAWAD CITY

Yemen

KAMRAN COMPLEX

Yemen

MBZ DISTRICT RETAIL

United Arab Emirates

SAHARA ORYX

Senegal

NAIROBI COMPLEX

Kenya

YEREVAN MANIFESTO

Armenia

ALSABEIN COMPLEX

Yemen

AL RAYAN HILLS

Yemen



RESIDENTIAL

MOUNTAIN SHADOW

Mali

TARYAN MANIFESTO TOWER

Ukraine

DUBAI VILLA

United Arab Emirates

MLETA HILLS

Lebanon

DUBAI VILLA 02

United Arab Emirates

PROJECT EXPERIENCE



EDUCATION

FUTURE UNIVERSITY

Yemen

SLU UNIVERSITY

Lebanon



ENTERTAINMENT & RETAIL

THE SOUQ SANA'A

Yemen

WORLD OF FUN

Yemen

SANA'A CITY MALL

Yemen



HOSPITALITY

BOGOTA HOTEL

Colombia

ADEN HOTEL

Yemen



CIVIC/GOVERNMENTAL

UAE EMBASSY

Armenia

SENEGAL PAVILION - DUBAI EXPO

United Arab Emirates

EMIRATES EMBASSY

Yemen

THE EUROPEAN UNION DIPLOMATIC COMPOUND OF MOGADISHU

Somalia

PROJECT EXPERIENCE



CORPORATE/OFFICES

SARAB - AL SAHRAA MULTIPURPOSE COMPLEX

United Arab Emirates

PRIME TOWER 01

Yemen

PRIME TOWER 02

Yemen

POTONIA TOWER

Yemen



HEALTH & WELLNESS

BASRA SPORT CITY

Iraq



TRANSPORTATION

GHANTOOT HIGHWAY REST AREA

United Arab Emirates

NGANGANIA RIVER CITY

REPUBLIC OF THE CONGO

01

\$12B

The natural selection Imitates life, behaves like nature, and seeks to become a harmonious addition; Mastery and balance of life's variables to profound relationship with the river and land; Monotheistic with nature structures joining our landscapes placing total focus on the existing natural surrounding.



MIXED-USE

AL SABEEN PARK

YEMEN

"EMERGING LANDSCAPE"

\$100M



In the neighbor of the oldest living city in the world, an intimidation of a long lived history, future is created, movement is felt decoding old formulas with fluidity of emerging lines capturing the soul of the old, presented futuristically.



AKON CITY

SENEGAL

\$6B

AKONCITY is an extension of the sea into the land with waves diving deep into the roots of each building, making it dance on the music of AKON to celebrate the rise of AKONCITY reflecting nothing but happiness bringing no less than success.

"NEW ERA RISING IN AFRICA"



DIAMNIADIO LAKE CITY

SENEGAL

“GEMS OF SENEGAL”

\$2.5B



Committing thru its site of being a unique contemporary and safe environment, Diamniadio lake city delivers modernization as transformative experience where luxurious aesthetic design meets simplicity and mass of transformative spaces. DLC designed to facilitated the evolution of technology to become the symbol of architectural transition from present to the future use. DLC programmed at 1.5 million sq. m. to accommodate the first inclusive financial district to be surrounded by offices, residential, educational, retail, hotels and recreational facilities.



ALRAWAD CITY

YEMEN

05

\$150M

The growing population in Sana'a, continuously causing the need of new residential development to accommodate new comers. The extreme dedication was used in locating a site, which is easily accessible to most of the city to become the home of international cultural and modern designed building. Al Rawad Development with its 1200 unit in seven blocks and services such as (neighborhood mall, club house school and etc.). The symbol of Yemen identity committing to its residence being in a unique contemporary environment that delivers livings as a transformative

"A MODERN LIFE IN SANA'A CITY"



MIXED-USE

KAMRAN COMPLEX

YEMEN

"CITY NEW DESTINATION"

\$109M



Kamran mixed-used project located in the heart of Sana'a along one of the main street "Hada Street". This landmark is designed in a creative looking luxury by presenting a modern aesthetic elements to satisfy the targeted customers. The different facilities include residential tower, business tower, hotel, and podium to include Kamran Headquarters, medical centers, retails, cinema, food, beverages and underground parking. What makes this project innovative is the flexibility of the plan for future expansions. As well the design had taken into account the surrounding areas and it is easily accessible to most of Sana'a."



MBZ DISTRICT

UNITED ARAB EMIRATES

07

\$44M

“A SOCIETY COMPLEX”

A Unique concept of emerging cities according to a modern vision that is built around the satisfaction of people's well-being, achieving most prestigious services. The project site located 18 km from the center of Abu Dhabi Island well placed within the center of the local community. The proposed new district center, well provide the right balance that can be struck between commercial and community uses.

General and special retails, food court, F&B supermarket, bank, ATM, spa, fitness, bookstore, service center, daycare, children playground, hair styles, clinic and etc.



MIXED-USE

SAHARA ORYX

SENEGAL

"A PIECE OF MARS"

\$150M



Located in the heart of the new capital of Senegal (Diamniadio). The aim of this future development to evolve the circumstance of its community. Many of these improvements will be reflected in the connection between all zoned area that should be dynamic and flexible enough. This project accommodates mostly residential, 20% offices, ground floor retail and F&B.



NAIROBI COMPLEX

KENYA

09

\$26M

The fast grown Nairobi, Kenya is becoming one of the economic hubs to the African nations. To accommodate this commercial growth, many projects proceeded and other on the way, were Nairobi mixed use complex will try to play apart in this future movement. The NMUC will consist of office tower, shopping center and high-end residential towers with a hotel overlooking the national park, Designed to strive by presenting architecture with a modern twist.



MIXED-USE

YEREVAN MANIFESTO

ARMENIA

\$100M



The aim of Yerevan Manifesto development to become the risen star of the capital. Economic revolution into a future living, working, entertainment and yet keep in our believe cultures preserve in our way of life. Yerevan Manifesto accommodates, residential, hotel, offices convention center, retail and F&B.



ALSABEIN COMPLEX

YEMEN

\$40M

Alsabein complex consists of office tower and two-story mall with flexibility for expansion. The design creates full balance between what exist and futuristic architecture. Extreme dedication was used in locating the site that is easy and accessible to most of the city of Sana's.



AL RAYYAN HILLS

YEMEN

Located on a hill top overlooking the capital of Yemen (Sana'a), this project considered to have one of the most strategic luxurious in Yemen. It consists of 400 villas and town houses of varying sizes. Four apartment buildings (8 to 12 story), five-star hotel. Shopping area and office building. Being the local consultant for this project. Our role was to assist the main design consultant (RMGM) in the development and culturally appropriate solutions for Sana'a as well as provide local liaison services through construction phase.



MOUNTAIN SHADOW

MALI

\$65M

The aim of Mountain Shadow will comply is to the future way of design of resorts & villas to be equipped with a futuristic infrastructure that will control circulation, landscape, architecture, energysystem, sustainability, all area function, way finding and etc. Mountain Shadow will accommodate 66 villas of 3 types (300 sqm/400 sqm) and stepped villas (400sqm) along with resort with all the amenities to include horse stable and horse track around the development.



TARYAN MANIFESTO TOWER

UKRAINE

\$35M



The fast pace of population growth in Kiev, Ukraine continuously causing the need of new residential developments to accommodate new comers. Altered economy and changing society are a major challenge for the developers. TMT development will play a key role in the quest for a new solution to these challenges (design, cost and efficiency). TMT Development is a symbol of growing culture in Ukraine Identity committing to its resident and reflecting a unique contemporary environment that delivers livings as a transformative experience for all people.



DUBAI VILLA

UNITED ARAB EMIRATES

\$5M

Living in the future based on prediction and imagination of what the technology provides, and the architect create. The idea to design a structure for living that links to the near future and be the norm for everyday life.



MLETA HILLS

LEBANON

\$5M

The need for an iconic development is vital for attracting new tourist. The Mleta Hills concept should create a new wave of futuristic development envisioning the evolution into a futuristic way of living and meditating in a natural environment, and yet keeping our beliefs, cultures, and traditions, presents in our way of life. Mleta Hills will accommodate 26 different in sizes and number of bedrooms chalets, restaurant, spa and medical treatment center.



DUBAI VILLA 02

UNITED ARAB EMIRATES

\$7M

Living in the future based on prediction and imagination of what the technology provides, and the architect create. The idea to design a structure for living that links to the near future and be the norm for everyday life.



FUTURE UNIVERSITY

YEMEN

"LARGEST MODERN EDUCATION CAMPUS IN YEMEN"



Future University is the home of national cultural, Education, scientific research and sporting institutions. It is a Symbol of Yemen identity committing to its campus of being a unique contemporary environment that delivers learning as a transformative experience for all people, irrespective of their origins, age and circumstance. FUS to include the main campus (business, engineering, liberal art school and etc.) medical schools, teaching hospital, UK and Canadian universities as part of the exchange program and sport faculties. Future University exposes will students to a rich cultural and social environment.



SLU UNIVERSITY

LEBANON

The university is centrally located in Southern Lebanon along the coastal highway. Such a location is easily accessible to commuting students as well as to the general public. It is to be a physical presence within the beautiful landscape of orchards and farms. The site overlooks the highway, and slopes up towards the mountains further east. This project seeks to create an academic environment. Integral yet separate from the hospital and recreational facilities to create a strong sense of presence from the start is of importance if the project is to be built in phases of use.



\$22M

The Old City of Sana'a is defined by an extraordinary density of rammed earth and burnt brick towers rising several stories above stone-built ground floors, strikingly decorated with geometric patterns of fired bricks and white gypsum. The city in its landscape has an extraordinary artistic and pictorial quality. The Souq will extend the 2500 years historical architecture design with a twist of green roofs and modern technology imbedded within the wall.



WORLD OF FUN

YEMEN

Located on one of the most exclusive site Sana'a (Yemen national park). The world of fun theme park is occupied over 225.000 SM of land as considered the largest in Yemen. The world of fun laid out in five different zones: The mini golf, The rides (26 rides such as giant wheel, train terror, skyscraper blast off tornado and many more). The water park (the crazy race, water wave pool and more). The food court located on one of the main entrances providing ten different types of restaurant as well as small cafeterias all around the site. The indoor park zone to accommodate the kids' world, video and laser tag gaming, bowling center, pool tables, restaurant and cafes.



SANA'A CITY MALL

YEMEN

It is foreseen to be the largest shopping mall in Yemen. The Sana'a City Mall site falls within the large areas dedicated to investments close to Movenpick Hotel, and to be built on an elevated area to overlook the city of Sana'a. This project comprises of 7 floors (5 basements, ground & first floor) including shops and leasable designed to attract tenants, 10 Movie theaters equipped with the latest display tools, amusement zone, adequate parking accommodates 2000 cars, food Court providing different types of restaurant and coffee shops with a distinctive overlooking on the city.



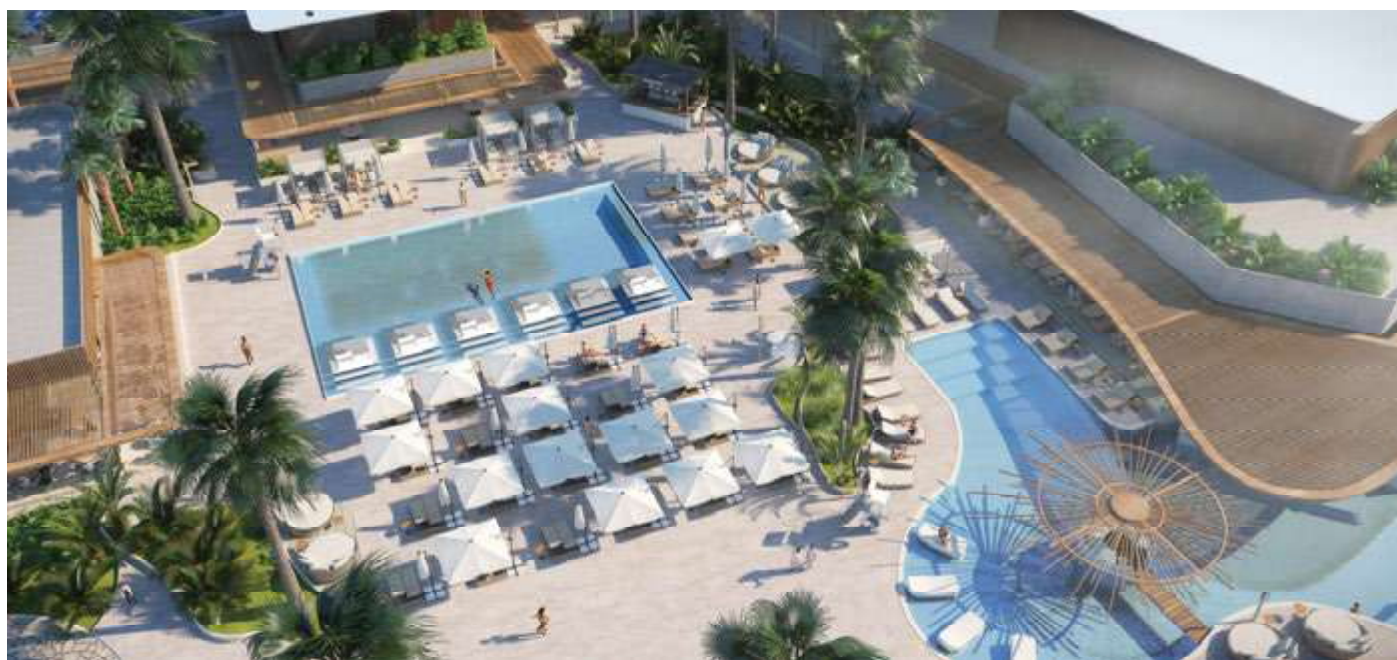
COVE BEACH

BENIN



Cove Beach Hotel & Resort will be the brand's first standalone, full-service destination and will open in Cotonou. It will feature bungalows, three-bedroom private villas, and a deluxe beach club. There will also be a fine dining Japanese restaurant, a steakhouse, and a nightclub.

"Cove Beach Hotel & Resort, Benin, not only marks a significant milestone as Cove Beach's first permanent international venue, but it is also the brand's first venue into a 360-degree, full-service hospitality offering,"



ADEN HOTEL

YEMEN



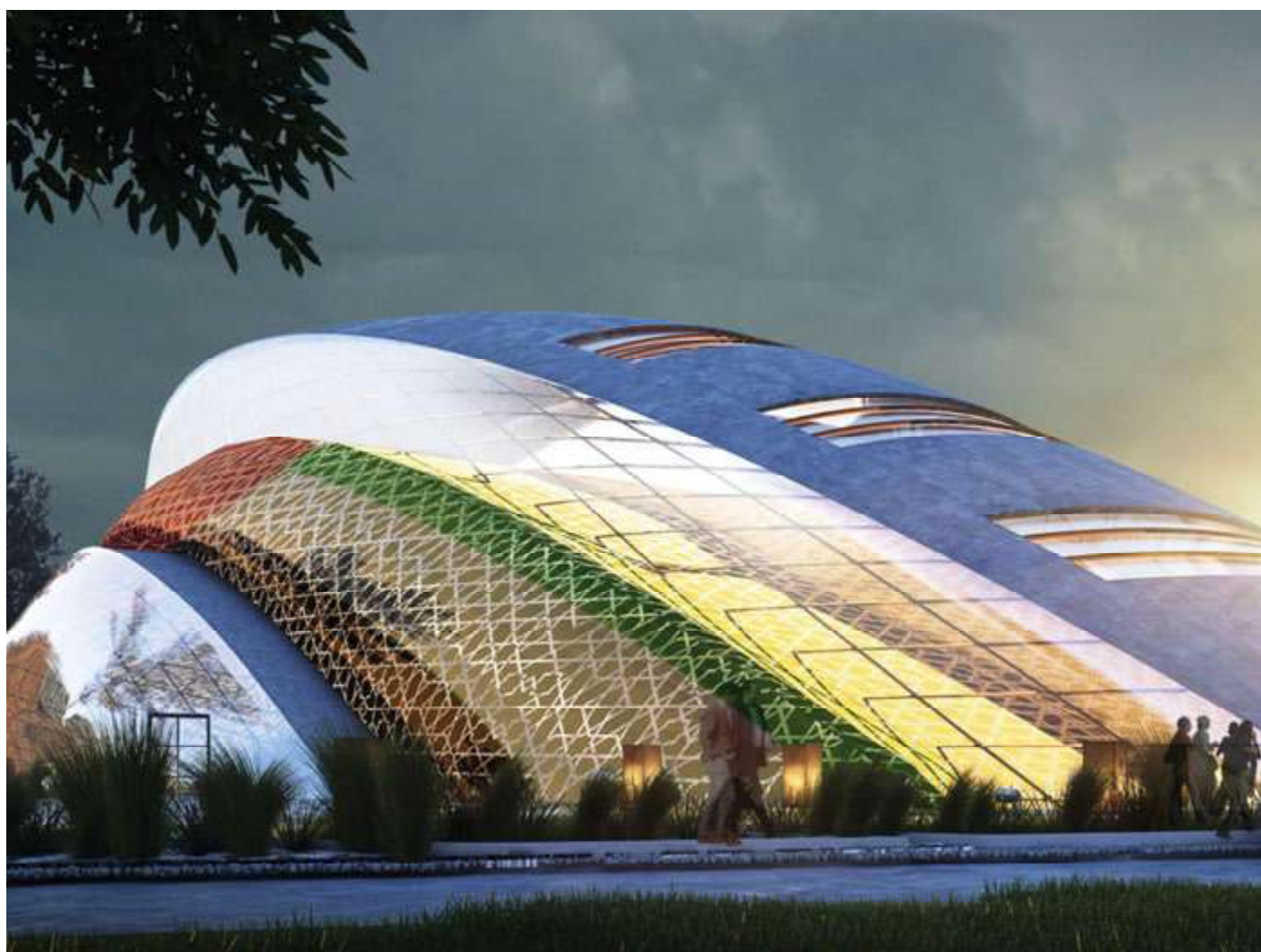
The Aden Hotel was one of the most prestigious hotels in Yemen as it's owned by Ministry of Tourism. This renovation project was funded by Abu Dhabi Fund for Development to accommodate football teams participating in the Gulf Cup in Aden. The hotel overlooks the beautiful Gulf of Aden in the historic city of Aden. The new contemporary looks for the 190 rooms and 14 hotel suites blend modern convenience aesthetic with the historic elements of Aden's unique culture.



UAE EMBASSY ARMENIA

\$10M

UAE Embassy Project idea is based on its history and the vision of its leaders to be one of the risen star of humanity evolution into a future way of living and adapt the idea that our building will be the norm in 25 years. The Embassy will accommodate the offices, conferences, hall and community meeting area, counters for services, ambassador villa resident and Majles for VIP guests.



EXPO SENEGAL PAVILION

UNITED ARAB EMIRATES

"THE STORY BEGINS AGAIN"

\$2M

Confluence of human civilizations is a very key of introducing the Republic of Senegal in the United Arab Emirates. In fact, we are re-enacting the first moments of the human evolution as discovered by anthropological studies stated that it all began in Africa before it moved to the Arabian Peninsula where humanity began to spread all over our home planet, Earth.



EMIRATES EMBASSY

YEMEN

27

Located in the heart of Sana'a overlooking of the presidential mosque, this renovation job of the emirates embassy designed to reflect the power of the emirates as a government, the inviting of its people, the culture of the country and the modernity of its setting.



EUROPEAN UNION DIPLOMATIC COMPOUND

SOMALIA

"SOLUTIONS FOR A CHALLENGING ENVIRONMENT"

\$10M



In 2014, the European Union decided to re-establish a fully-fledged delegation in Somalia. The delegation was to be co-located with the European Union Delegation to Kenya. The European Union issued a tender for the construction of a highly secured compound in the Mogadishu Green Zone and its management for a period of 10 years. The resulting compound is now the most secure and comfortable in Mogadishu's "Green Zone", offering high-level services, green energy generated on-site, and a welcoming environment where EU delegates can peacefully live and work for the next 10 years, despite being in one of the most dangerous countries in the world.



AL SAHRAA GROUP COMPLEX

UNITED ARAB EMIRATES

29

\$109M

"ILLUSIONS IN ABU DHABI DESERT"

Sarab development (AL Sahraa H.Q.) established a new urban edge to the north east of Abu Dhabi, as well as a new address for AL Sahraa Group, clearly from which access is gained to the major element of the scheme. The main idea of this project is to design a new urban Quarter that reflects the nature of the desert using a high-end architecture. Some buildings designed in the form of dune and tents and others in the forms of drops and waves. The landscape surrounds the buildings gives the impression of a green oasis in the heart of the desert. In addition, the building color scheme completes the inspiration.



BASRA SPORTS CITY

IRAQ

\$162M

“SPORT LANDMARK”

The postwar rebuilding effort of Iraq lead to create the country sport city to be located in its economical capital “Basra”. our contribution is a sport complex as part of the sport city by creating these cylinders' endless forms to accommodate the multiple use sport stadium, swimming stadium, basketball and volleyball stadium, convention center and administrations facilities.



GHANTOOT HIGHWAY REST AREA

UNITED ARAB EMIRATES

31

\$33M

Located in Seih Sederah sector between Dubai and Abu Dhabi. The site also possesses the advantages of adequate parking spaces for trucks and cars and accessibility. Rest areas are an essential element of the complete highway system, the concept is to create a place where people can rest, eat, shop, and sleep along the busy road between the two major cities. They are provided for the safety and convenience of traveling public. This project programmed at (16,430 leasable area) to accommodate restaurant, retail, gift shop, supermarket, car and trucks service as well as short and long stay.





BAD Consultant

Bakri & Associate Development
Consultant

DUBAI HQ

Swiss tower, office # 3205
Cluster-Y JLT Dubai - UAE

P: 04 878 59999

INFO@BADCONSULT.COM

WWW.BADCONSULT.COM

OFFICES IN

Senegal

Nigeria

Yemen

Egypt

Lebanon

YAMASAKI[®]

Partner

YAMASAKI®

60 YEARS
OF INNOVATION



CONTENTS

01

FIRM
PROFILE

02

DESIGN
APPROACH

03

PROJECT
EXPERIENCE

04

PROJECT
OVERVIEW

YAMASAKI®

60 YEARS
OF INNOVATION

mission

YAMASAKI is a United States-based full service architectural firm specializing in world-class design services for domestic and international clientele. We provide design solutions for the built environment that have relevance to its context by being responsive to sustainability and human environmental needs.


ABOUT US

YAMASAKI, INC. is a United States-based international planning, architecture, engineering and project management firm, established in 1955 with offices in New York, New York and Birmingham, Michigan, that specializes in world-class design services for domestic and international clientele. We are committed to the excellence of every project; regardless of size, budget or location. Working with our clients we strive to find creative solutions that are thoughtful, responsible and sustainable.

YAMASAKI employs an experienced staff of licensed professional architects, engineers, interior designers, graphic designers, planners, project management and administrative personnel.

Key staff have more than 100 years of combined professional experience, providing creative, high-value, sustainable design services in different cultural contexts. In addition to United States based experience, we have delivered the full range of services in Abu Dhabi, Azerbaijan, Brazil, Canada, China, Dubai, Germany, Hungary, India, Japan, Korea, Qatar, Russia, Saudi Arabia, Spain and Turkey.

The diversity of our experience and the ability to draw from it in different contexts enhances our ability to provide clients with true world-class vision and value.



60 Years of
Credibility

60 Years of
Innovation

ONE STOP
SHOP

YAMASAKI®

60 YEARS
OF INNOVATION

OUR APPROACH

YAMASAKI brings together its considerable experience and capability to each project through its experienced staff and as a strategic partner to its clients. Since its inception, YAMASAKI has structured its teams using the Principal-In-Charge organizational method. This approach provides the highest level professional/executive involvement and direction to all our projects and ensures Principal participation with the client. The result is high value-added decision making; a necessity to strategist, planning, designing and implementing a balanced, integrated, functional, cost effective and successful project that is a reflection of our client's vision.

YAMASAKI's culture of design excellence and principal-level client commitment results in visionary planning, iconic architecture, engineering innovation and effective project management throughout the entire design and construction process.

YAMASAKI can be a total service provider to our clients using in-house capability in combination with specialist consultants as necessary to meet the needs of our clients.

"The purpose of Architecture is to create an atmosphere in which man can live, work and enjoy."

- Minoru Yamasaki



YAMASAKI'S BRANCHES



EXPERTISE

Planning and Urban Design
Architecture
Interior Design
Graphic Design
Engineering
Project Management

ARCHITECTURE MUST RESPOND APPROPRIATELY TO ...

“The functional criteria of a project. These criteria are often clearly defined in the goals established by the client. Also inherent in those goals but generally less clearly definable are the values that the client associates with the project. Therefore, it is appropriate that the client’s participation is fully integrated into all phases of project development.”

ACHIEVEMENTS



YAMASAKI has received numerous awards and recognition for architectural excellence. We are honored to be recognized by our peers as well as various user and trade organizations.

ARCHITECTURE

YAMASAKI design solutions result from a collaborative process that encourages our multi-disciplinary teams to research alternatives, share knowledge and imagine new ways to solve the challenges of our built environment.

Our architecture responds to the needs and aspirations of our clients and communities. We give form and meaning to spaces, buildings, landscapes and communities always balancing internal functions with external demands of site, culture, sustainability and economics. Research and analysis form a base of knowledge for any project from which new discoveries, innovation and creative solutions are derived.

YAMASAKI's approach emphasizes this integrated, multi-disciplinary design process.

The diversity of our commissions, both culturally and geographically expands our knowledge, which we transform into unique design solutions that create real value for our clients.

SERVICES

Needs Assessment
Programming
Site Analysis/Selection
Architectural Design
Facility Planning
High Rise Design

YAMASAKI®

60 YEARS
OF INNOVATION

INTERIOR DESIGN

YAMASAKI's interior design teams study a client's social, environmental and /or economic drivers and culture to create spaces that help those aspirations flourish.

Great interior space has dramatic effects on our wellness and productivity. YAMASAKI's design solutions use space, color, materials, energy and light as tools to create healthy residential and corporate environments that enhance our life as well as our performance.

SERVICES

Building Evaluations
Facility Programming
Feasibility Studies
Furniture Specification
Interior Design
Signage Design
Space Planning
Strategic Facility Planning

ENGINEERING

Our creative process integrates design and building physics to address specific social, aesthetic and environmental and economic concerns.

YAMASAKI's integrated engineering solutions increase occupant comfort, optimize energy-efficient outcomes and reduce life-cycle costs.

By using sophisticated, next-generation design tools and collaborating with our architectural colleagues to maintain their design vision, we create high-performance, cost-effective environments.

SERVICES

Structural Engineering
Mechanical Engineering
Electrical Engineering
Plumbing and Fire
Protection Engineering
Energy Modeling
Specialist Services

PLANNING/URBAN DESIGN

Urban design is about making connections between people and places, movement and urban form, nature and the built environment. It draws together the many aspects of place-making, sustainability and social and economic viability into the creation of places of distinction and singular identity. Urban design is derived from, but transcends, planning and transportation policy, architectural design, development economics, engineering and landscape. YAMASAKI draws these strands together creating a vision for an area and then deploys the resources and skills needed to bring the vision to life.

YAMASAKI's urban design team collaborates with clients, stakeholders, partners and diverse project team members. By setting specific goals and building consensus, we can ensure a successful process to develop ideas, concepts and strategies that address the great diversity of planning and urban design challenges confronting our clients and communities.

SERVICES

Design Guidelines
Feasibility Studies
Land Development Planning
Master Planning
Strategic Development Planning
Urban Design
Urban Planning

YAMASAKI®

PROJECT MANAGEMENT

Projects served by YAMASAKI take full advantage of its system oriented approach to project delivery; what that means to clients is the highest quality for their projects within their time and budget constraints. Our employment of this delivery system has served our clients well for almost 60 years on projects large and small. The systems based project delivery method is best way to manage schedule and budget risks for our clients.

As a result the YAMASAKI brand has come to known not only for design excellence, but also for concise, cross-coordinated, properly documented construction documents for all disciplines, a commitment to pro-active value planning, schedule management, accurate cost estimating and quality assurance.

YAMASAKI's experience is embodied in its skilled management staff consisting of project managers, cost / budget estimators, CPM schedulers, project administrators, planners, architects and engineers. Our broad experience domestically and internationally allows our company to effectively serve a wide array of customers in the public and private sectors.

YAMASAKI can provide its clients with the benefits of proactive systems oriented solutions to any part of their business in any location.

SERVICES

Claim Control / Evaluation
Value Engineering
Communications Management
Procurement Management
Construction Supervision
Risk Management
Human Resource
Quantity Surveying
Management
Quality Management
Integration Management
Scope Management
Schedule / Progress
Monitoring and Management

YAMASAKI®

60 YEARS
OF INNOVATION

SERVICES



ARCHITECTURE

URBAN DESIGN



PROJECT MANAGEMENT



INTERIOR DESIGN



PLANNING



Residence Inn
by Marriott

The diverse experience of its principals enables YAMASAKI to collaboratively approach each client's project challenges from different perspectives, resulting in more innovative, responsive solutions.

CIVIC



Qatar National Convention Centre Doha, Qatar

Opened in 2011, the Qatar National Convention Centre is 76,000 square meters of unparalleled convention facility boasting iconic design and cutting-edge facilities in a world-first green-technology venue. QNCC is the first of its kind built to the Gold Certification of U.S. Green Building Council's Leadership in Energy and Environment Design (LEED).

QNCC is located alongside elite universities, research and technology institutions in Education City, a new global hub of ideas and innovation and is only 20 minutes away from the central business district. The facility provides a venue of choice for regional and national conventions, exhibitions, gala events, concerts, weddings and banquets. QNCC's sheer size, sensational spaces over three levels and high-tech solutions has set new standards.

YAMASAKI served as Chief Architect and Engineer in the design of the new Qatar National Convention Center which is situated on the 14 million square meter campus of Education City, Qatar. It is surrounded by six world-renowned US university campuses including Weill Cornell, Texas A&M, Carnegie Mellon and Georgetown, the Convention Center is equipped to host a plethora of educational, commercial, cultural and entertainment events.





This architectural showpiece features a stunning tree-like facade symbolizing the Sidra tree. Traditionally, poets, scholars and travelers would gather in the shade of the sidra to exchange knowledge. The tree is an appropriate symbol of the Qatar Foundation.

This facility is the largest convention center in the Middle East. The Center features nine lecture halls, including a 2,500 seat theatre, an exhibition hall and banquet facilities for up to 10,000 occupants collectively.



Prince Naif Center for Health Science Research Riyadh, Saudi Arabia

The Prince Naif Centre for Health Science Research is a new building designed for the largest university in Saudi Arabia, King Saud University, situated in the capital of Riyadh. The new Centre of 23,800 m² comprises world-class research facilities, including facilities for research in cancer, molecular biology, genetics, infectious diseases and several other medical disciplines.

Inspired by a monolith, the building is placed on a podium, which roots the building in the urban, local context. The central Science Square is the heart of the building and features common functions such as lobby, café, library and lecture hall. Visual and physical contact connects the laboratories to the workstations on the open balconies. Thus, the design supports informal meetings and innovation across research areas.

The significant architectural cut of the northern facade marks the main entrance to the building and provides a view of the life in the Science Square. The remaining facades have a modern, sophisticated structure, which filters the strong daylight and reduces the need for cooling. The interplay between light and shadow provided by the facade contributes to creating a cool, light and vibrant atmosphere in the building.

YAMASAKI provided Technical Consulting in a collaborative effort with Henning Larsen Architects for this project.



Seoul Performing Arts Centre Seoul, Korea

The City of Seoul has a rich artistic environment of cultural halls, performing arts centers, museums and many other monuments of historic importance. The design of the 400,000 square foot Seoul Performing Arts Center was in response to an international ideas competition for a cultural complex which would become an architectural icon to the City of Seoul as well as symbolize the cultural wealth, dynamism, and the international prestige of the city.

The center is located on the Han River on Nodeul Island which divides the City of Seoul from north to south. The program includes an opera and a concert hall, each with a capacity of 1,500 seats, an open-air concert hall, and other related facilities and amenities.

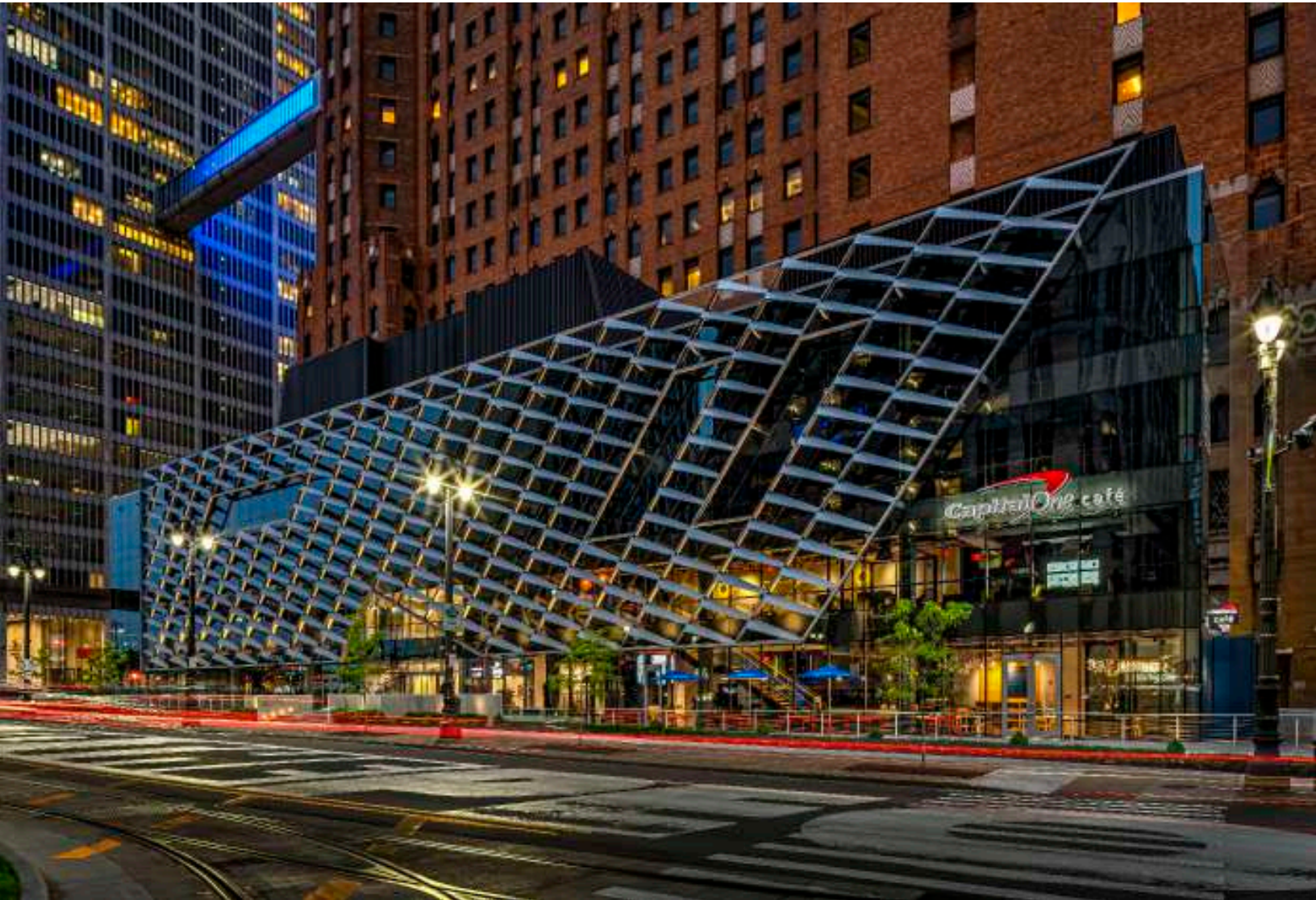


The National Grand Theater of China Design Competition Beijing, China

This award winning competition design houses four theaters; an opera house, a concert hall, a performance stage and an experimental, arena-style theater. A monumental stone colonnade and traditional, Chinese cornice work stylistically relate to the adjacent Palace of the People and honor its cultural context. The theaters are connected to a large, central atrium.

This Cultural Galleria is a welcoming and celebratory public art space which offers the flexibility to serve various functions. The contemporary, high-tech designs of the theaters contrast with the surrounding stone frame and provide architectural drama. The solution is rich, multi-faceted, and multi-dimensional. It incorporates grand traditional motifs and expresses them in wholly modern ways. Additionally, the design responds to the highest acoustical and performance standards.

CORPORATE / OFFICE BUILDING



511 WOODWARD

Detroit, MI

YAMASKAI provided a construction and design services for the full refurbishment of the exterior shell and core of the 4 story, 30,000 square foot building. Scope also includes site and rework of the tenant spaces to either a white box for the retail tenants and warm shell for the office space in the building.

Built in 1972, 511 Woodward is in a premier location along Lower Woodward Ave in Detroit's Financial District. There is 26,000 total usable square footage which is approximately 6,500 square feet per floor.





750 TRADE CENTER Portage, MI

750 Trade Centre Way was designed as the first office building in this new mixed-use office park that sits at the intersection of the main crossroads through town. This initial three story building features a gently curved lobby with a two story atrium that serves as the main entry and focal point. 750 Trade Centre Way lies to the left of the overall site, with future project phases planned to the east of the building.

YAMASAKI was challenged to design a building that provides a strong and inviting design to attract tenants that also fit within our client's aggressive budget and schedule requirements. The solution for the exterior wall replaced field-laid masonry exterior walls with brick-inlaid architectural pre-cast concrete panels, a strategy that saved both time and money. The ribbon windows with curtain wall accents also provide an economic and appealing solution that met the owner's requirements.

The Class A building was 100% leased and fully occupied six months after the core and shell constructions were completed. YAMASAKI also provided planning and interior design for most of the tenant areas, including two full-floor tenants and the building owner/ management company. The building's interior features include custom office suites, conference rooms, a small fitness center with locker rooms and showers, and other traditional building services.





Century City Theme Towers Columbia Broadcasting Services - LA, CA

The site consisted of 1,800 acres of prime real estate in a rapidly growing part of Los Angeles. Of the two key issues in developing the master plan, one was the need for a central location for the hotel, providing a constant source of activity both day and night. The other was the 500-foot height restriction imposed by the FAA due to the nearby Santa Monica Airport. The project had to be both harmonious with the curving shape of the Century Plaza Hotel, and unique to Century City, whose other office buildings were rectangularly orientated.

With the twin triangles, unlike paired buildings placed in parallel, one does not look into one building from the other. Rather, there is an unimpaired view from the windows of both. Each wall of the buildings is designed as a Vierendeel truss to effectively take lateral wind and seismic forces; this structural design also permits the 250-foot clear span at the base of the wall between the corner columns, providing gracious access to the building lobbies.



Fine Venture Tower Seoul, Korea



Built in 1995, the Fine Venture Tower was originally designed as an 11-story tower. The challenge of this project was to renovate the building and increase the number of floors, while still maintaining the original design intent.

The project included a six-floor, vertical addition and a renovation of the existing floors. The exterior was re-skinned with stainless steel cables from the second floor to the roof that helped create an improved visual presence. In addition, the lobby was re-designed to include retail space.





United States Federal Reserve Bank Richmond, Virginia

YAMASAKI first established its relationship with the Federal Reserve System when the firm was commissioned to significantly expand the size of the Detroit facility. The sensitivity and success of the design and its apt approach to the site's urban context predicated half a century of work to come.

The Richmond, Virginia Federal Reserve Bank anchors the downtown skyline with elegant grace as it soars to its twenty-six story height. Over the past years, YAMASAKI has continually been involved, updating our original design to meet the new and changing demands of the financial industry. Security audits and enhancements, interior reconfigurations and renovations, ADA compliance adaptations, technology and information systems upgrades, and below grade expansions have been notable elements of this work.



Oakland County Government Center Pontiac, MI

Yamasaki was commissioned to do a complete Master Plan for the Oakland County Government Campus and continues to maintain a central role in the expression and fulfillment of this master plan.

A state-of-the-art technical center houses computer services critical to the daily operation of a variety of government agencies. YAMASAKI's design solution effectively addresses security, accessibility, efficient work flow patterns, storage and training needs. The face of the facility expresses the functions within while it maintains a contextual relationship with the neighboring structures and site. Bordered by woodlands, the offices are oriented to provide clear sight lines to tranquil views.

Phase II is the integration of a new building and renovations to the 275,000 SF Courthouse, augmenting its functions. 64,000 SF of the new facility houses three libraries: Law, Reference and Collections for the Blind and Physically Handicapped. 74,000 SF of office space was designed to include offices for the County Prosecutor and supporting staff. YAMASAKI's architectural solutions called for the use of similar materials, reflecting the existing character and palette of adjacent structures to enhance rather than compete with the total complex. Particular attention was paid to accessibility that went beyond mere ADA compliance given the needs of intended user groups.



Columbia Center Complex Troy, MI

The Columbia Center Complex consists of 2 thirteen-story office towers with a two-story connector building, a three-level parking structure with direct access to each tower, an integrated fitness center, a four-story stand-alone office building, and a two-story medical clinic. The first tower was completed in 1989 while the second tower was completed in 1998. As a testament to the timeless design and quality materials, one cannot discern the difference in age. The site is located alongside Interstate 75 and called for the creation of a high quality, high visibility project.

YAMASAKI's solution features a landscaped mall with a fountain that serves as a main approach to the formal composition of the two office towers. The building exteriors are composed of granite and architectural brick fabricated panels. Arched stone and custom glass entrances welcome visitors into the main lobby, which has vaulted ceilings, stone arches, inlaid granite, crystal and polished bronze.

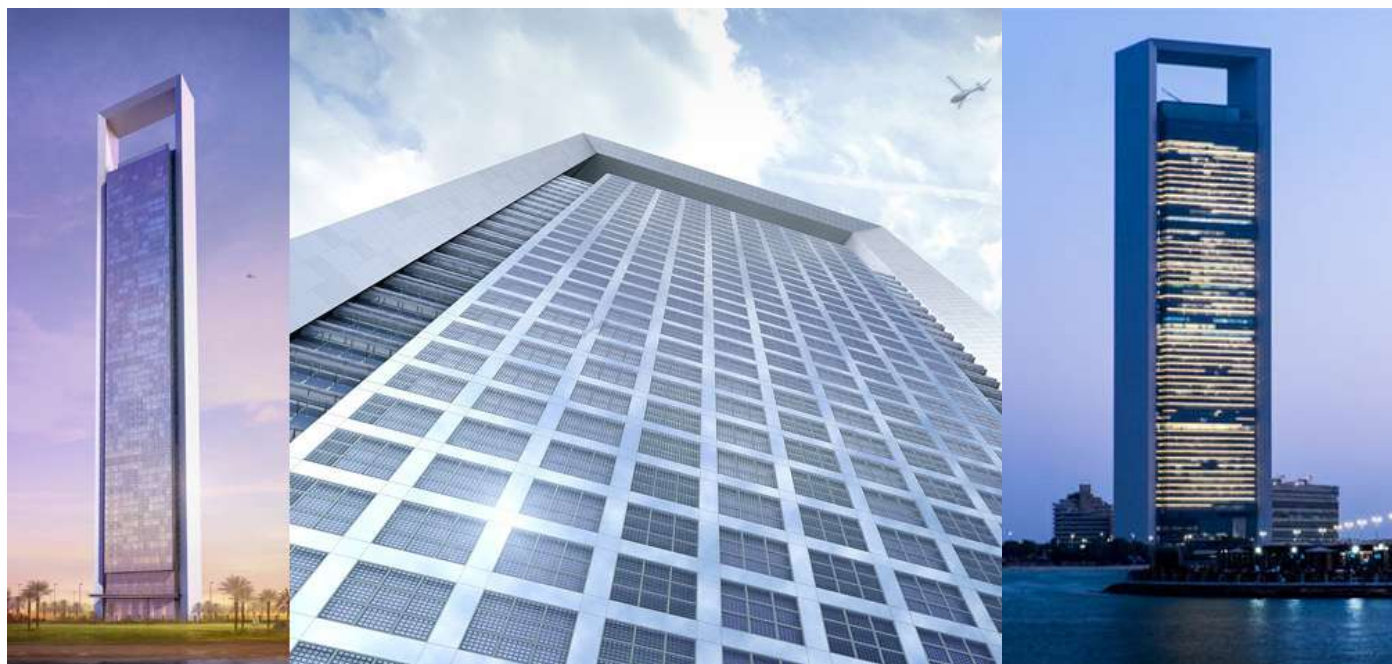
The fitness center, which sits on the parking structure to the west of the site, houses a retail fitness facility, including wellness equipment, a running track, and locker rooms. The outpatient medical clinic includes several primary care practices, an emergency walk-in clinic, diagnostic departments, and administrative and business offices.



Torre Picasso (Union Explosivos Rio Tinto) Madrid, Spain

Located within the financial district of Madrid on Pablo Picasso Square, the Torre Picasso Office Building at forty-four stories was the tallest building in Europe when it was completed in 1982. YAMASAKI assisted in the selection of the site and led a master plan effort to develop a utility infrastructure and under-ground system of roads and parking to allow unimpeded pedestrian movement throughout the area. An important part of this master plan effort was to assure that the office tower respected the historical nature of the surrounding neighborhood.

A significant feature of the design is the wide entrance arch inviting the public into the first three above-grade levels of the building, which are dedicated to retail. The building was also the first to be lit up at night as part of an overall lighting plan for the city. The building is the headquarters of Union Explosivos Rio Tinto, S.A and owned by Fomesto de Construcciones y Contratas, S.A.



Abu Dhabi National Oil Company [ADNOC]

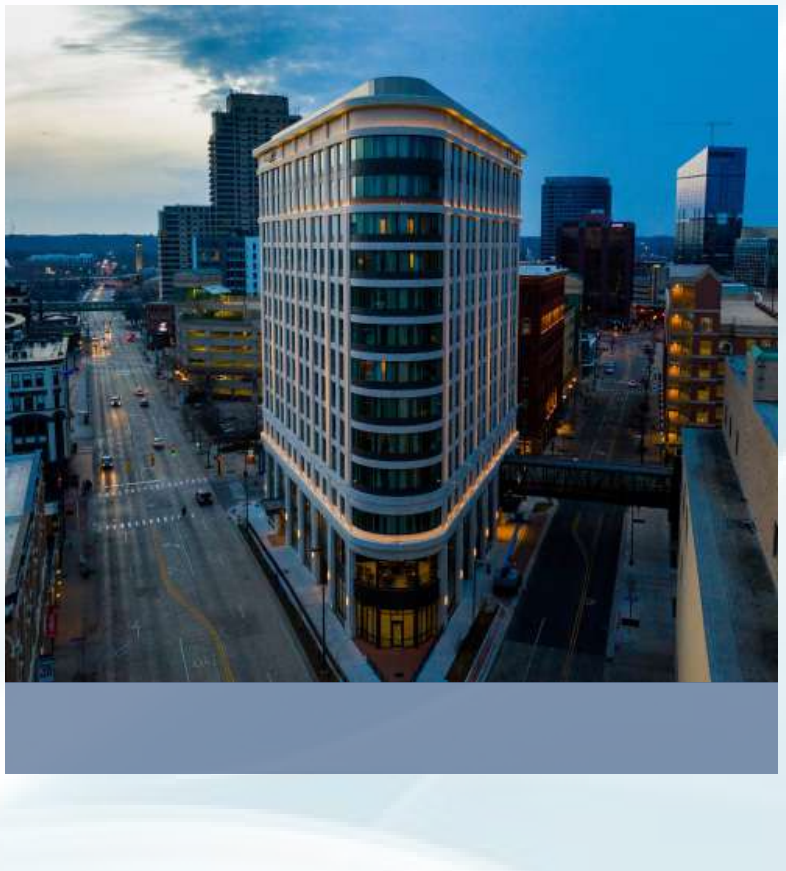
Abu Dhabi, United Arab Emirates

Collaboration with HKO

RESIDENTIAL / MIXED-USE

Residence Inn
Grand Rapids, MI







1200 6th St. Detroit, MI

Mixed-Use Development under construction / Design.

600 apartment unit

240 hotel rooms

Retail





Barwa - New Cairo

Cairo, Egypt

A master planning development which is considered a new extension to Egypt's capital, Cairo. Developed on nearly 2,000 acres of gently rolling landscape, New Cairo City will be home to a self-contained community.

The city will feature several unique villages containing every imaginable choice of lifestyle, from gated villas and townhouses to high-rise apartments.



Yoido Richensia

Seoul, Korea

Yoido Richensia consists of 2 forty-story towers connected by a seven-story building. Located in downtown Seoul along the scenic Han River, the location of this project was a major consideration in the building's final design. The project is situated next to one of the tallest buildings in Korea in the heart of a very prestigious downtown site. The challenge was to design a building with high visibility which would stand out among the other high-rise structures round it. The mixed-use Facility includes 235 upscale luxury apartments and 252 office suites. The orientation of the two towers is skewed to maximize the southern exposure and help provide visual privacy for the residential units. The residential space is divided into individually owned luxury housing units within the towers.

Each unit is approximately 185 SM (2,000 SF). The connector building consists of six floors of office suites which were primarily designed for business use and lodging purposes. The structure also includes a fitness center, retail shops, a rooftop community area and below-grade parking.



Park view Complex

Boondang, Korea

Located on a beautiful site, this project emphasizes environment-friendly design and is oriented to take full advantage of scenic views. It establishes a safe, comfortable and pleasant working and living community.

Boondang Parkview consists of thirteen 28 to 32-story residential towers, a hotel, offices and retail space. High quality ventilation and lighting control systems were considered for the ecological efficiency of the entire complex.



Century Plaza Hotel Los Angeles, California

As the primary generator of activity, the hotel was located at the very hub of the Century City complex, opposite the site of the Century Plaza Towers. The site faces a large Fountain set in an elliptical widening of the Avenue of the Stars, beneath which a pedestrian passage leads to the Century Plaza towers site.

The ground sloped dramatically to the rear of the site, making it possible to put the convention halls, ballrooms, meeting rooms, restaurants, a bar and shops below the lobby level. The roof of the convention area is covered with gardens and ponds to enhance the dining and recreational facilities.

A central lobby opens up to a full view of this rooftop garden, making it an extension of the indoor space. To accomplish this, the elevators were separated into two banks, located at the quarter points from each end of the building. By doing so, the guests' walking distance from the elevators to the individual rooms was reduced to a minimum.



Moochangpoo Resort

Boryeong, Korea

The Moochangpo Condominium is a well-being resort near the city of Boryeong. The complex is situated on the Daecheon Beach, which features the longest stretch of ocean and sand on the west coast of Korea. The area is rich in abundant resources and well known for the mineral-rich Boryeong mud it produces and markets for its skin moisturizing properties.

The 15-story resort Features scenic views of the beach. Additional amenities include a spa and Fitness area, swimming pool, restaurant and retail shops.



Mixed-Use Complex
Henan Province, China



Beijing World Trade Center
Beijing, China



Sheraton Miyako Hotel Tokyo, Japan

- The hotel was designed to provide luxury accommodations and is integrated into Japanese gardens and providing a degree of seclusion while still being conveniently located in central Tokyo.
- The 12-story complex Features 492 guest rooms and suites, several lounges and restaurants, banquet rooms and meeting facilities, retail shopping, spa and a health club.





Shinyoung Royal Palace Suites
Seoul, Korea



YAMASAKI®

YAMASAKI®

60 YEARS
OF INNOVATION



King Fahad Intl. Airport
Dammam, KSA



King Fahad Intl. Airport
Dammam, KSA



Oakland County



Seattle Federal Science Pavillion
Seattle, Washington



Grand National Theatre
Beijing, China



Temple Beth El
Bloomfield Hills, Michigan



Crittenton Hospital
Auburn Hills, Michigan



Century Plaza Hotel
Los Angeles, California



Flagstar Bank
Troy, Michigan



750 Trade Center Way
Portage, Michigan



Columbia Center
Troy, Michigan



Fine Venture Tower
Seoul, Korea



One Woodward
Detroit, Michigan



Cevahir Center
Istanbul, Turkey



Farmington Hills Corporate Campus
Farmington Hills, Michigan



World Trade Center
New York, New York



Yoido Richensia Mixed-Use Complex
Seoul, Korea



Buckhead Mixed-Use Development
Atlanta, Georgia



Yeomchang dong Silver Tower

Seoul, Korea

Yeomchang-dong Silver Town is a 20-story, 664 unit, assisted living Facility for seniors. The luxurious, fully furnished, contemporary space that has been designed to enhance and enrich the quality of life for the seniors. Residents are able to access numerous on-campus facilities as well as attend social activities. Residents can also feel secure knowing that there is 24 hour supervision and assistance for health-related services.



Cheongdam Paragon

Seoul, Korea

This competition-winning project is a luxury housing development built in a wealthy neighborhood. The 38,361 square meter, 12-story apartment complex sits on a raised podium, separating it from traffic on busy, near-by streets. Dense landscaping provides increased security, sound buffers and privacy.

The apartment towers are topped by communal sky gardens. The Y-shaped building mass is oriented to allow maximized river and park views. The building's height steps down to facilitate day lighting. The development recalls a European streetscape, distinguishing it from the surrounding community.

AIRPORTS



King Fahd International Airport

Dammam, Saudi Arabia

Yeomchang-dong Silver Town is a 20-story, 664 unit, assisted living Facility for seniors. The luxurious, Fully Furnished, contemporary space that has been designed to enhance and enrich the quality of life for the seniors. Residents are able to access numerous on-campus facilities as well as attend social activities. Residents can also feel secure knowing that there is 24 hour supervision and assistance for health-related services.



YAMASAKI®

60 YEARS
OF INNOVATION

THE FISHER BUILDING
3011 WEST GRAND BOULEVARD, SUITE 222
DETROIT, MICHIGAN 48202

Office +1.877.547.0885
E-mail info@yamasaki-inc.com
Website www.yamasaki-inc.com

ARCHITECTURE
PLANNING
ENGINEERING
PROJECT MANAGEMENT
INTERIOR DESIGN
GRAPHIC DESIGN

Key Staff Roster

Principal / Architects

Hussein Bakri
Robert Szantner

Headquarters - Dubai
US Office

Project Managers

Ryan S. Ligot
Jack Green

Headquarters - Dubai
US Office

Architects

Christine Rizk
Shahd Afifi
Stephanie Alrahbanie
Zaina Alakhras
Farag Ahmed Said Al-Maktari
Micheal Lawrence
Ahmed Mohammed Honaiber
Heba Abdullah Gawdah
Sarah Al-Attab
Arwa Yahya Odhari

Headquarters - Dubai
Headquarters - Dubai
Headquarters - Dubai
Headquarters - Dubai
Lebanon Office
US Office
US Office
US Office
Yemen Office
Yemen Office

Interior Designers

Layla Sayegh
Janaa Ateih
Mark A. Zimmerman
Arij Kiwan
Lamaa Boulhosn

Headquarters - Dubai
Headquarters - Dubai
US Office
Lebanon Office
Lebanon Office

Principal / Civil Engineer

Hamoud Abdelmalek

Headquarters - Dubai

Civil Engineers

Fawzi Haider Sarhan
Sameer Jaradat
Ahmed Khalil Suidan
Mohammed AlHamadi
Fahd Al-Hoathee
Salahadedin Naji Saif
Abdulwahab AlSelwi
Adel AlRadi
Waheed al Alei

Headquarters - Dubai
Headquarters - Dubai
Headquarters - Dubai
Headquarters - Dubai
Yemen Office
Yemen Office
Yemen Office
Yemen Office
Lebanon Office



Key Staff Roster

Electrical Engineers

Abdulhabib Ghanem Alqirshi
Gamal A.A. Mohesen
Sadeq Taher Ahmed Gazem

Headquarters - Dubai
Yemen Office
Lebanon Office

Mechanical Engineers

Shawki Mohammed Yasin AL-Alimi
Abdul Basit Muhammad Iuff.

Headquarters - Dubai
Yemen Office

Tech Engineers

Ammar Abdulrahman AlKabouse
Fawzi AbdulQawi AlQobati
Hamed AlKeez
Nasser Ismail Shamsan
Mortada Al-Wajeah

Headquarters - Dubai
Yemen Office
Yemen Office
Lebanon Office
Lebanon Office

Civil Engineers- Specialists

Dr. Abdulhakeem Nouradain
Ahmed Khalil Suidan
Fahd Ahmed Mohammed Al-Hoathee
Najeeb Mohammed Al-Odaini
Sadaq Sinan
Fawzi Haider Sarhan
Abdelwahab Al-Zuberi

Yemen Office
Yemen Office
Yemen Office
Yemen Office
Headquarters - Dubai
Headquarters - Dubai
Lebanon Office

Administration

Mr. Yahya Hussien Ghamdan
Mr. Abdulmalik Attuf
Dr. Hashim AlShami
Mrs. Safa'a Moqbel
Mrs. Fairouz Ghailan
Mrs. Eman Al-Awadi

Yemen Office
Yemen Office
Yemen Office
Yemen Office
Headquarters - Dubai
Headquarters - Dubai

Hussein Bakri

Chairman

Profile

A dedicated, creative and innovative professional, combining extensive experience as a Design Director/Manager in the architectural field. A proven track record of designing, developing and delivering successful projects for residential, commercial buildings, governmental, educational and recreational spaces in line with client requirements and objectives. A natural leader who effectively manages and motivates multicultural teams to deliver optimal performance using excellent interpersonal skills versatile and resourceful, applies strong communication skills to build positive relationships with clients and contactors.

Experience

AKONCITY

- AKONCITY is an extension of the sea into the land with waves diving deep into the roots of each building, making it dance on the music of AKON to celebrate the rise of AKONCITY reflecting nothing but happiness bringing no less than success.

Cove Beach Hotel & Resort

- The brand's first standalone, full-service destination and will open in Cotonou. It will feature bungalows, three-bedroom private villas, and a deluxe beach club. There will also be a fine dining Japanese restaurant, a steakhouse, and a nightclub.

Mountain Shadow Resort Development.

- Five star resort hotel to include, 60 luxuries villas and horseshoe stable along with all amenities at cost of US \$75m.

Manastir Mixed Use Development (Yerevan Twin Iconic towers)

- Mixed use development to accommodate 68,000 sq. m of shopping, F&B, convention centre, residential tower 20 floors above the mall, a 19-story business tower and a nine-story hotel worth US \$100m

W

Sahar Oryx Residential Development.

- Residential development to accommodate 193,000 Sq.m of variously sized apartments, ground floor Neighbourhood mall and 60,000 Sq.m of basement parking at cost of US \$200m

Diamniadio Lake City (Dakar Market and Business district)

- Mega Mixed use development to accommodate, residential, offices, business district, mall, resort and business hotels. Built up area 1.5 million Sq.m above ground and 630,000 Sq.m parking underground at cost of US \$ 2.8 billions and children play areas; part of a unique concept of emerging cities according to modern vision

Neighbourhood and District Centres (Mall), Abu Dhabi

- Across the 11 projects, siWWzes vary from 8,000sq.m up to 32,000sq.m at a cost of US \$10m up to US \$55m, accommodating retail, supermarket, F&B, community services, Fitness, spa, day care

Al Rawad Residential Project

- Residential development to accommodate 800 variously sized apartments and a Neighbourhood mall, school and a clubhouse worth US \$150m.

Kamaraan Mixed Used Project

- Development to accommodate 42,000 sq. m of shopping, F&B, health care, theatre, fitness and multipurpose hall, a residential tower 10 floors above the mall, a 15 story business tower and a nine story hotel worth US \$70m

Ghantoot Highway Rest Area Project

- One of its first in the Middle East based on the services it will provide to commuters between Dubai and Abu Dhabi. Contains motel, restaurant, retail, business centre, gift shop, supermarket, car and truck service centre short and long stay car park worth US \$55m

Basra Sport City

- Compromises Basketball, Volleyball and water sport arena, a multi-function arena for sport and a convention centre worth US \$164m

Future University

- Home of cultural, education, scientific research and sporting institutions, accommodating engineer, business, commercial, medical school, teaching hospital and British/Canadian exchange campus

Sarab Development Project

- Comprises of Al Sahraa HQ building, workshops, outreach offices, a mosque, retail spaces, supermarket, apartments, townhouses and labour camps for Al Sahraa employees, restaurants, cafeterias and fitness club to provide a new urban Quarter in Sheikh Zayed M.C worth US \$120m

Other Projects:

- UAE Embassy in Armenia
- Al Rayyan Hill Project
- Palm Jebel Ali Crescent and Bahrain Financial Harbour
- Dubai World Trade Centre Phase #1
- South Lebanon University
- International Bank of Qatar
- Nazami Resident in Azerbaijan
- Qatar Convention Centre
- Sahil Resort in Azerbaijan
- World of Fun Theme Park
- South Lebanon University
- San'a Media City and Diplomatic Club

Key skills

Leadership and Management:

- Leading and managing individuals and teams of international personnel through the design and development phases of complex, large-scale projects
- Managing the design and construction phase of various types of projects
- Leading multi-faceted teams from various regions ensuring a cohesive unit working to achieve shared aims
- Ensuring highly motivated and positively engaged team members through the creation of a culture of high performance and achievement, as well as providing the support required to facilitate this process
- Overseeing all project phases including submission of successful bids
- Leading site engineering departments through design and construction stages
- Delivering effective training to new team members, monitoring performance and providing constructive, useful feedback on areas for potential improvement to aid continued development.
- Creating a business development network in the region to secure new project.

Technical Skills:

- Creating range of innovative concepts, schematics and detailed designs for various types of projects based on specific requirements in line with creative objectives
- Creating a sustainable design to achieve international standards
- Designing modern solutions that exceed aesthetic goals whilst minimising resource consumption
- Preparing and negotiating consultancy contracts

Client and Contractor Management:

- Identifying client requirements, and designing and presenting concept designs to meet objectives
- Consulting with clients and consultants on design/construction changes, finishes and material selection
- Sourcing and recruiting specialist sub-consultants, and defining their role and scope of work
- Coordinating effectively with sub-consultants to prepare tendering packages

Educational Background

- 2000** Bachelor of Architecture, Lawrence Tech University, Southfield, MI, USA
- 1995** General Studies, Henry Ford Community College, Dearborn, MI

Robert Szantner, AIA NCARB

Director of Design

Profile

Robert Szantner is an international award-winning architect and designer who's 35+ years of hands-on project experience, in all phases of project planning, design and management, allow him to guide BAD's largest and most challenging efforts to satisfactory completion for our development, governmental, financial, automotive-related clients both domestically and abroad.

Experience

AKONCITY

- AKONCITY is an extension of the sea into the land with waves diving deep into the roots of each building, making it dance on the music of AKON to celebrate the rise of AKONCITY reflecting nothing but happiness bringing no less than success.

Residence Inn - Grand Rapids, MI

- Principle in charge and Design Lead for 147 rooms 14 story extended stay hotel in an existing area and historic entertainment district

Al Khorayef Centre

- Al Khobar, Saudi Arabia

Qatar National Convention Centre - Doha, Qatar

- Design Architect for 80,000 SM facility which is the centerpiece of the Education City Master Plan and houses 10 performance venues; including a 4,000-seat conference hall, and a 2,500, 500 and two 300-seat theatres.

Stryker Corporate Headquarters – Kalamazoo, MI

- Principal-in-Charge and Design Lead for a 75,000 SF headquarters facility at Kalamazoo International Airport with an additional 50,000 SF of expansion space. BAD provide full AE services including all programming, interior design architecture and engineering.

650, 750 950 Trade Center Way – Portage, MI

- Mega Mixed use development to accommodate, residential, offices, business district, mall, resort and business hotels. Built up area 1.5 million Sq.m above ground and 630,000 Sq.m parking underground at cost of US \$ 2.8 billions

Barwa New Cairo – Cairo, Egypt

- Design Principal for the master planning and design of a 2,000-acre sustainable mixed-use development outside Cairo, Egypt that includes over 1,000 villas, over 15,000 apartment units and townhouses and associated religious, social, medical and educational facilities and infrastructure for total estimated on-site population of over 40,000 people. Currently under construction.

Masdar City Phase I Housing – Abu Dhabi, UAE

- Full A/E Design Services for 287 units of townhouse housing and office, retail, commercial, mosque and community facilities totaling 36,738 SM. Project also included 2,400 space car park, people mover station and maintenance facility, municipal logistics center and central plant. Robert's role was Principal planner and architect for all aspects of the project.

Detroit West Riverfront Vision Plan

- Detroit, Michigan

Design Lead as part of a multi-disciplinary team that prepared an AIA award winning concept for the strategy and redevelopment vision of 1 mile of former industrial land along the Detroit River.

Federal Reserve Bank 5th District

- District Headquarters - Richmond, Virginia
Federal Reserve Bank 5th District Branch - Baltimore, Maryland
Federal Reserve Bank 5th District Branch - Charlotte, North Carolina
Federal Reserve Board of Governors Operations Center - Goochland, VA

Project Director/Design Principal for multiple projects for the Federal System ranging from new construction, renovations, and security enhancements continuously since 1991. All aspects of the banking operations for the 5th district have been redesigned under Mr. Szantner's direction principal, designer and architect-in-charge.

Parkview Mixed Use Complex - Boondang, Korea

- Lead designer for the master planning and design of a large mixed-use development consisting of thirteen 28 to 32 story high-rise structures for residential, hotel, office and retail uses totaling 3,850,000 SF of Residential space, 480,000 SF of commercial space and structured parking for 2,700 cars.

Educational Background

University of Michigan, Ann Arbor, Michigan
Master of Architecture – Design & Design Theory Master of Business
Administration – Land Use Economics Bachelor of Science in Archi-
tecture

Professional

American Institute of Architects (AIA) – Member

Affiliations

Registered Architect - MI, VA, TX, NC, MD, SC, IA, GA NCARB Cer- ti-
fied
National Trust for Historic Preservation - Member Urban Land Institute –
Associate Member

Hamoud Abdulmalek

Principal / Civil Engineer

Profile

A dedicated, creative and innovative professional, combining extensive experience as a Director/Manager in the construction field. A proven track record of managing, developing and delivering successful projects for residential, commercial buildings, governmental, educational and recreational spaces in line with client requirements and objectives. A natural leader who effectively manages and motivates multicultural teams to deliver optimal performance using excellent interpersonal skills versatile and resourceful, applies strong communication skills to build positive relationships with clients and contractors. A leader for the 1st success story of corporate governance project in Yemen for "YGCE". Attended 3 conferences of CG in one Sana'a and two in Dubai as a speaker to present the YGCE success story of implementing the CG project.

Experience

AKONCITY

- AKONCITY is an extension of the sea into the land with waves diving deep into the roots of each building, making it dance on the music of AKON to celebrate the rise of AKONCITY reflecting nothing but happiness bringing no less than success.

Mountain Shadow Resort Development.

- Five star resort hotel to include, 60 luxuries villas and horseshoe stable along with all amenities at cost of US \$75m.

Manastir Mixed Use Development (Yerevan Twin Iconic towers)

- Mixed use development to accommodate 68,000 sq. m of shopping, F&B, convention centre, residential tower 20 floors above the mall, a 19-story business tower and a nine-story hotel worth US \$100m

Sahar Oryx Residential Development.

- Residential development to accommodate 193,000 Sq.m of variously sized apartments, ground floor Neighbourhood mall and 60,000 Sq.m of basement parking at cost of US \$200m

Diamniadio Lake City (Dakar Market and Business district)

- Mega Mixed use development to accommodate, residential, offices, business district, mall, resort and business hotels. Built up area 1.5 million Sq.m above ground and 630,000 Sq.m parking underground at cost of US \$ 2.8 billions

Neighbourhood and District Centres (Mall), Abu Dhabi

- Across the 11 projects, sizes vary from 8,000sq.m up to 32,000sq.m at a cost of US \$10m up to US \$55m, accommodating retail, supermarket, F&B, community services, Fitness, spa, day care and children play areas; part of a unique concept of emerging cities according to modern vision

Michael K. Lawrence, AIA

Senior Project Manager

Experience

YAMASAKI – US

- Sr. Project Manager, 2017 – Present

AKONCITY

- AKONCITY is an extension of the sea into the land with waves diving deep into the roots of each building, making it dance on the music of AKON to celebrate the rise of AKONCITY reflecting nothing but happiness bringing no less than success.

Residence Inn - Grand Rapids, MI

- Principle in charge and Design Lead for 147 rooms 14 story extended stay hotel in an existing area historic entertainment district

Lafayette West – Detroit, MI

- Project Architect for Master Planning and Schematic Design Stages of the \$100 Million 400 Unit Mixed-Use Housing Development in Detroit, MI. Responsible for project organization, execution and financial management

As Sr Project Manager, lead the project team in the development of complex architectural projects and provided comprehensive project assessments to project owners and perspective owners regarding architectural project development.

Developed project work plans to ensure on time and within budget innovative design projects as well as developed and executed marketing campaigns to generate new clients and maintain existing clients.

Arch Link, LLC – Bloomfield Hills, MI

President, 2007–2017

- Lead a small architectural and engineering development firm focused on project management and facilities development with energy efficient solutions.
- Completed \$500,000 of major renovations to a Long Grove, IL mid-century home that reconfigured living space and resolved building envelope issues.
The renovations resulted in energy savings of over \$400 per month.
- Developed conceptual design studies for a new educational building on the St. Mary's campus and planned the new athletic turf sports field.

Projects totaled over \$25 million.

Experience

- Provided a conceptual design outline to the River Walk Hotel management including code compliance, facility renovation, and phased project cost estimate including an operations business plan for an on-site fitness center. Completed a \$45,000 kitchen and home remodeling project in Cleveland Heights, OH. The renovations helped make the home more accessible for the aging home owner. Built strategic alliances with Ford and Toyota engineering design teams that resulted in on time product launches as well as making our product piece price objectives for the Ford Windstar, Navigator and Toyota Sienna.

General Motors Corporation – Detroit, MI

- Facilities Engineer, Project Manager, 1985 - 1993
Supported GM automotive production through the design / development of manufacturing facilities and management of corporate facilities programs.
Lead the development of the Inland Fisher Guide Engineering / Manufacturing facility in Vandalia, OH renovating warehouse facilities into a state of the art engineering offices and test lab for the manufacturing of air bag modules, instrument panels and steering wheels. The project estimate totaled over \$12 million. Project value engineered and completed for \$6.5 million.
Served as the Engineering Supervisor for the development of the Saturn Manufacturing complex in Spring Hill, TN
Overseeing the development of architectural / engineering plans and documents supervising 35 engineering CAD operators.
On site project manager during the construction of the Saturn facilities monitoring on-site construction progress, shop drawing review, and change order requests processing. Supervised the installation of manufacturing equipment in the Body Panels and engine plant buildings.

Educational Background

University of Michigan - Ann Arbor, MI
Master of Architecture - Design & Design Theory
Iowa State University – Ames, IA
Bachelor of Science

Jack Green, AIA NCARB

Project Director

Profile

Well versed in all aspects of practice administration and management, marketing and project development from identification, programming, design, QA/QC review, cost control and mitigation, and contract document development, through completion and project realization. He has a history of providing team leadership and technical expertise required to coordinate and complete highly complex, technically advanced and diverse projects for a wide variety of client types and construction methodologies including fast track and contract packaging logistics. Solid understanding of contract/project liability, insurance, indemnification, and general risk analysis/ risk mitigation.

Experience

AKONCITY

- AKONCITY is an extension of the sea into the land with waves diving deep into the roots of each building, making it dance on the music of AKON to celebrate the rise of AKONCITY reflecting nothing but happiness bringing no less than success.

Qatar National Convention Centre in Doha, Qatar

- Project Director during Design development and Construction Documents stages.

Heydar Aliyev

- Lead entire design team for the this project and the international Airport renovation and expansion and ADNOC 70 Story HQ facility in Abu Dhabi.

Terminal “D” project (\$3.8B) at Dallas/Fort Worth International Airport

- Provided management consultation, design and design development, and quality assurance support. Architect-of-record responsibilities.

Barwa New Cairo – Cairo, Egypt

- Design Principal for the master planning and design of a 2,000-acre sustainable mixed-use development outside Cairo, Egypt that includes over 1,000 villas, over 15,000 apartment units and townhouses and associated religious, social, medical and educational facilities and infrastructure for total estimated on-site population of over 40,000 people. Currently under construction.

Professional Affiliations

Registered Architect - Nebraska
NCARB, National Council of Architectural Registration Boards, Certified

Mark A. Zimmerman, ASID

Interior Design

Profile

Experience includes: project scheduling; needs analysis and real estate evaluation; programming; conceptual and schematic design development; space planning; furniture, fixtures and equipment selection, specification, and mock-up services; color and materials selection, specification; environmental graphics and way finding design; bid analysis; construction administration and move management. He has 35 years of experience in all phases of commercial interior architecture and design including project management, supervision of interior design staff and coordination with architectural, engineering and consulting services providers.

Experience

Blue Cross Blue Shield of Michigan - Detroit Michigan

- Interior design of 42,000 SF implementing corporate standards. 60 days from project start to move in.

Qatar National Convention Centre - Doha, Qatar

- Interior Designer largely responsible for finish selections and detailing for 80,000 SM facility which is the centerpiece of the Education City Master Plan and houses 10 performance venues; including a 4,000-seat conference hall, and a 2,500, 500 and two 300-seat theatres.

Wellness Plan Administration Building - Detroit, Michigan:

- 96,000 SF renovation. Included development of furniture standards.

Professional Affiliations

- American Society of Interior Designers (ASID)
- ASID Past Michigan Chapter President
- NCIDQ certified

Education:

- Schoolcraft College:
Associates Degree; Architectural Technology
- University of Michigan:
Bachelor of Fine Arts; Interior Design

Ryan S. Ligoť

Arch-Interior Design Project Manager

Experience

TECHNICAL MANAGER

DUBAI:

- Responsible for all technical & creative aspects of all interior design proposals.
- Develops the intended environmental experience employing modern and latest
- Materials, gadgetry, tools and effects available in the market to achieve the intended experience for the proposed project.
- Task to do intensive research and comprehensive studies and develop the design approach and the concept of design.
- Develops the look and feel and the holistic ambiance for the project proposal.
- Leads the Presentation and Production of all technical drawings and Space Planning and Functional development proposals.

DESIGNER (SENIOR)

Pico Art International Pte Ltd, Job description:

- To Develop Design with manual/free hand sketches and incorporating principles of design.
- Using 3d and 2d software for professional presentation and illustrations.
- Aids in developing the intended environmental experience employing modern and latest.
- Materials, gadgetry, tools and effects available in the market to achieve the intended experience for the proposed project.
- Task to do intensive research and comprehensive studies and develop the design approach and the concept of design.
- Aids in developing the look and feel of spaces, finish and material selection, furniture and components selection.
- Space Planning and Functional development proposals.

PRODUCTION MANAGER/HEAD

Cityneon Philippines Inc. Job description:

- Overall in charge of construction and fabrication of special design custom built modules.
- Leading the Production staff of 12 personnel and 3 Technical supervisors.

- Direct instructions/tasking to both sub-contractor and in-house team.
- Optimize the output of production personnel to sustain the best quality of workmanship.
- Implement guidelines, rules, regulations and schemes to enhance production output.
- Instigate QA/QC and make sure that specification and standards are met.
- Maximize production /fabrication methods to make the project cost effective.
- Facilitate, evaluate and manage production resources to optimize output.

DESIGNER/INSPECTION OFFICER

**Office of the City Engineer Designing, Planning and Programming
Division Urban Mission Areas Development Office**

**2nd Floor City Hall, SAV-1, Parañaque City, Philippines Job
description:**

- Design, plan and devise appropriate measures and planning programs.
- Authorized to do progressive Inspections on all on-going Projects and coordinate with the nominated General contractor.
- Tasked to carry out the Design and Implementation.
- Tasked to administer and manage the Citywide socialized housing program of the local government.
- Coordinate with National Government Agencies and Non-government
- Organizations as well as private sector associated in our operations.
- Formulate strategic schemes and evaluate technical matters to expedite the process of the program.

DESIGNER/DIGITAL RENDERER

Arfin Contract & Trading

**20 Paseo de Rey., BLS, Parañaque City, Philippines Job
description:**

- Overall design formulation, concept improvement, and aesthetic enhancements.
- Preparation of drawings, layout, revisions and project presentations.
- Coordination with different technical disciplines on project concerns.

DESIGNER/ILLUSTRATOR

**RC Rosal and Associates SAV5, Sucat, Parañaque City,
Philippines Job description:**

- Creating Artistic Exterior & Interior perspectives and illustrations.

Key Skills

- Leads a Team of 20 Draftsman and Decorators in drawings and presentations.
- Project involvement from tendering phase until execution stage
- Developing proper work programs and delegation for each staff/ personnel.
- Internal and external engineering coordination.
- Gives direction on IA matters.
- Involved in every aspect of finishes, furniture, equipments and all IA elements.
- Coordination with Consultant, Designers, Procurement and subcontractors.
- Develops shop drawing and gives direction on critical drawing details.
- Assure drawings are issued on time for site execution.
- Planning, Design development, Material selection.
- Using 3d and 2d software for professional presentation and illustrations.
- Involved in construction of 400 Villas and Main Building Gates for PNU project in Riyadh
- Creative and Technical Design facilitation and execution
Technical application and implementation

Educational Background

MASTERS IN BUSINESS MANAGEMENT

St. Francis of Assisi College System, Las Piñas City, Philippines

BACHELOR OF SCIENCE IN ARCHITECTURE 1998-2002

Technological Institute of the Philippines Mapua Institute of the Philippines 1994-1998 Manila, Philippines

Professional Development

- Construction Safety Orientation Course -Singapore
Concord Associates 175 Bencoolen St. Burlington square
#06-01/02 Singapore 189650,
- Workshop on Establishing the Consortium of Local Resource
Institute for effective Urban Development
DILG-Local Government Academy Training Center, Los Baños
Laguna, PH. Nov 28 2003 Global Trends:
- Urban and Regional Development in the 21st Century
NREA-PIEP Joint international Convention PICC -CCP
Complex, PH.
- Urban Managers Development Program
Sustainability workshop DILG-Local Government Academy
TrainingCenter, Los Baños Laguna, PH. July-Aug 2003
- Urban Planning and Regulation System
Mandarin Oriental Hotel, Makati City, PH Feb 2003
- AutoCAD with Color rendering

Fawzi Haider Sarhan

Design Section Manager/ Civil Engineer

Experience

AKONCITY

- Consultant assistant for the project structural evaluation in Dubai.

Diamniadio Lake City

- The structural design for the residential units of Dakar Market and Business district in Dubai.
- Civil Engineer and Preparing Tenders.

Aden Hotel

- Refurbishment of Aden Hotel “ 5 stars hotel

Sana'a City Mall Project

- Revision the structural design of Sana'a City Mall Project.
- Prepare the architectural bill of quantities of Sana'a City Mall Project.
- The structural design for Buildings Design of Civil Affairs Intendancies in Governorates + Prepare the Bill of quantities and tender documents.
- The structural Design of Residential Project for Members of Socio-Cultural Association for Ministry of Foreign Affairs' Employees + Prepare the Bill of Quantities.

Toyota Showroom

- The Structural Design for Toyota Showroom and prepare the bill of quantities.

Al-Nowras Beach Cabanas

- The Structural Design for Al-Nowras Beach Cabanas – Abin Beach. (Tourism City), Aden.

AlBustan Project

- The Structural Design of AlBustan Project “Residential Project”

Yemeni Gas Co. Building

- The structural Design for the Yemeni Gas Co. Building and prepare all the tender documents, bill of quantities.
- The structural Design the Gas station-Aden for the Yemeni Petroleum Company Sana'a.
- Quantities & Bridge Engineer in Al-Aund Road & Azan Al- Qurn Road projects .
- Quantities & Bridge Engineer in Al-farsh Habeel Al-Sabt Road / Lahg (18 Km).

Al-Olia Road project

- Quantities & Bridge Engineer in Al-Mashawalah Al-Olia Road project/Taiz (18 Km).
- The Structural Design of Residential Buildings

Key skills

Technical Skills:

- Design section manager in the Yemeni Group for Contracting & Engineering.
- Civil Engineer and Preparing Tenders.
- Preparing the architectural projects bill of quantities.
- Consultant assistant for the projects structural evaluation.
- Teacher in Engineering Faculty Sana'a University.

Educational Background

2002 B. C Degree in civil Engineering – Construction, Yemen.

Key Software Skills

- Using engineering programs as AutoCAD + StaadPro + Staad-Pro3
- Using Survey tools and devices.
- Preparing for Tenders (Documents, Bill of Quantities, Specifications..etc)
- Professional in Windows operation system, Software MS office and internet.
- Using all computer programs.
- Ability to using the Total Station for Survey works.
- Ability to prepare the schedule time for projects.
- Using the practical program in computer.
- Using the Autodesk Land Desktop Programme

Abdulhabib Alqirshi

Senior Electrical Engineer and Power Consultant

Profile

Senior Electrical Engineer with extensive experience of handling different types of Complicated Electromechanical Engineering design of projects, supervision and management, his main field of experience is design, management and supervision, of Electrical power projects. He designed and supervised a lot of complicated projects the latest one is the design of Aden Free Zone Electrical Master plan for Sub sector J where he was the Electrical Engineering Team leader, and he was the overall design coordinator for both power net work and power plant of 20 megawatts. In addition, very familiar with the local market competitive tendering and execution including pricing, prepare tenders, analysis of tenders and evaluation.

Experience

Major Projects
Design & Supervision

MEP (Mechanical, Electrical and Plumbing) Manager Consultant for AkONCITY Project. (Headquarters Dubai)

Team leader of Electrical Engineering team for the Design of Electrical power Distribution net work and street lighting for Diamniadio Lake City (Dakar Market and Business district).

Aden Steel Factory having a power plant of 30 megawatts with all electrical transmission and distribution networks.

Altadamon Aleslami International Bank- Mercure Hotel Sana`a –

Commercial Bank Of Yemen main office & Branches (20)

Amran General Hospital

Rural General Hospitals in – Sharab – Mukayrass- Albaraddon – Almoharaq—Khamer and raidah

Expansion of **Althourah Hospital Sana`a** - cardiac center, Neurology, nuclear medicine, MRI

Rehabilitation of **Althorah Hospital Hodeidah** including Emergency department

Aljumhoury Hospital Sana`a - Cancer Department and X ray

Medical Laboratories Lahj Taiz, Bogo, Mukalla, Aden, Qishen, Al-hodeidah

Experience

Hotels

- AKONCITY Hotels
- Sanaa Mercure, Burj Hubaish, Asser Sana'a
- Alsaeed Commercial center Sana'a
- Alsharaq alawsat commercial center Aden
- Canda Dry hodeidah – Main Head office
- Alhydray Trading center (SONY)- Sana'a
- Altadamon Aleslami International Bank and its Branches
- Hayel Saeed Residential Housing Villas – Beit Bous Sana'a
- Ribat Alsafa Grand Mosque.
- MCH Almukalla

Experience

Professional Experience

MEP Manager Consultant at BAD Consultant

Contracting & Engineering for many projects, the latest one is Manage of MEP (Mechanical, Electrical and Plumbing) consulting works for AKONCITY project.

Electrical Engineering Team Leader at ECC/ ECORYS

Design of both power plant 20 megawatts capacity , power distribution net work , and street lighting for two sites in Aden free zone sector J and Hodeida Industrial estate 200 ha area each, the consulting services was carried out by ECC in association with ECORYS Netherland Model Free Zone/Industrial Estate Development project Netherlands BV , the Client Ports Cities development Program Aden , Consulting services was financed by the World bank for AlBustan Tourism Complex.

Senior Electrical Resident Engineer with Sheikh Matloub Atef

Worked in Aden Steel factory, Electrical engineer for the overall supervision of electrical

Educational

- **Bachelor of Electrical Engineering, Power AinShams University, Cairo, Egypt**

Key Software Skills

- ENGINEERING PROGRAMS
- WINDOWS OPERATION SYSTEM
- SOFTWARE MS OFFICE

AbdelWahab Alzuberi

Civil Engineer

Experience

Sustainability

- Green supply chains from Hamburg Port Training Institute, HPTI - Hamburg, Germany .
- Sustainable procurement from Hamburg Port Training Institute, HPTI - Hamburg, Germany .
- Environmental and sustainability reporting from Hamburg Port Training Institute, HPTI -Hamburg, Germany .
- Green Environment Consultants Responsible for :
 - Evaluate and assist of environmental risks for sites
 - Make sampling strategy and collection procedure for contaminated sites
 - Prepare Quotations and BID'S
 - Make all communications with clients and PPE

Key skills

Technical:

- Civil Engineer and Preparing Tenders for Dakar Market and Business district (Headquarters Dubai).
- Saving Cost on production process from Amran Cement Plant Amran, Yemen.
- Cost analysis from Amran Cement Plant Amran, Yemen.
- Mechatronics& Its application from Central Institute Training Design C.I.T.D -Hyderabad , India
- Hydraulic ,Air and Electrical controlling from Central Institute Training Design C.I.T.D -Hyderabad , India
- CAD/CAM program from Central Institute Training Design C.I.T.D - Hyderabad , India
- AutoCAD from Central Institute Training Design C.I.T.D -Hyderabad , India
- Driving of heavy machine (shovel, bulldozer, truck, surface mining ...) from Amran Cement Plant .

Educational Background

2000 BS degree in Geochemistry with good Grade from Faculty of Science, Alexandria University –Egypt.

- **Diploma in Instruments Environmental Management System & Its tools with Good grade from Hamburg Port Training Institute, Hamburg, Germany.**

Career Summary

Civil Engineer / BAD Consultant, Dubai
Civil Engineer/ Green Environment Consultants, Dubai
Petroleum Reservoir Analyst, Yemen

Key Software Skills

Microsoft Office
Adobe Package
Autocad

Farag Al-Maktari

Architect/ Site Engineer

Experience

BAKRI & ASSOCIATE DEVELOPMENT CONSULTANT Nov.2008- Present

Position: Head of Technical Section

Responsibilities: design and supervision of construction.

- Give credits to the (architectural shop drawings) & architectural finishes materials submitted by the contractor.
- Supervision of the architectural works during implementation.
- Receive all the work of architectural finishes carried out by the contractor.
- Social Funding for Development(Time-Based)

Position: Designer Engineer - Site Engineer

Responsibilities:(consultancy) design, working drawings consultation and supervision of construction on call bases

Site Engineer

- Give credits to the (shop drawings) .
- Supervision of the construction works during implementation.
- Ensure Quality assurance of work performed by the contractor in accordance with the standards of the profession.
- Supervision of the construction work for the building-Yemeni Women's Union project.
- Supervision of the construction work for the following projects:
 - Diamniadio Lake City
 - Al Sabeen Complex
 - Al Rayan Hills
 - Mleta Hills
 - Aden Hotel
 - Emirates Embassy in Yemen
 - Al-Shaheed Al-Ahmer school
 - Al-Shaheed Al-Qirdai school
 - Bin Abi Waqas school (18 classrooms)

AL-MOHNDSEN Co.LTD Sana'a Aug.1998-Jan.2008 Position: Designer Engineer

Responsibilities: consultancy in : design, working drawings

- Design & Working Drawings for a Residence Project (180 villas) Green City. Owner: AL-MOHENDES Co.
- Design for a Touristy Village, AL-Boraikah-Aden project. Owner: AL-MOHENDES Co.
- Design & Working Drawings for Vocational Training Centre Buildings (For Several Yemeni City)
Owner: SMEC CO.
- Design & Working Drawings for Wadi AL-sailah Owner: Secretariat of Capital City

Key skills

Technical:

- Give credits to the (shop drawings) .
- Supervision of the construction works during implementation.
- Ensure Quality assurance of work performed by the contractor in accordance with the standards of the profession.

Educational Background

1996 Bachelor Degree in Architecting Engineering /Faculty of Engineering, Sana'a University, Yemen

Key Software Skills

- MS. Office Package
- Presentation Programmes Package
- 3D-Studio max 2008
- 3D-Studio VIZ V3.0
- AutoCAD 2008
- Architectural desktop 2007
- Arc view GIS V 3.2
- Sketch up pro. 6

Fawzi AlQobati

Technical Engineer

Experience

Work with the Social Fund for Development under the supervision of Engineer Yahya Haddad, during the period of In the following projects- :

- building a healthy Rima Governorate
- School 6 chapters (built Aldbib) Rima Governorate

Work with the Office of Dar architecture engineering and Inches, during the period of in The following projects:

- Work as a project manager for the restoration and rehabilitation of not Algrassi Sana'a Governorate
- Work as a project manager for the restoration and rehabilitation of buildings presidential Aden
- Participate in overseeing the implementation of the Republican Guard buildings Aden
- Supervise the implementation of the company steel building and stores Sana'a Governorate
- Participate in overseeing the implementation and rehabilitation of buildings presidential Hodeidah Governorate

Working in Mass Consultants for the design , consultancy office and during the period from and in the following projects: -

- Supervising the implementation of the AMTC.
- Working in the calculation of quantities of the former British Embassy and evaluate the extent of the damage.
- Supervising the implementation of Hafez al-Shami is

Work with the Yemeni Group for contracting & engineering, during the period from In the following projects: -

- Participate in overseeing the implementation of the Gamdhan villa
- Participate in overseeing the implementation of the Al Bustan tourist complex/
- Project manager in abutaleb Building project and Sheikh Abdol Samed Dowind's VillaProject
- Work as a project manager AlHadoori's Villa Project Participation in the supervision of the Diplomatic Towers

Educational Background

Higher Diploma Higher Technical institute

Shawki AL-Alimi

Mechanic Engineer

Experience

Bakri & Associate Development Consultant - Dubai

- Consultant Engineer (Air Conditioning - Ventilation)
Aden Hotel
Sana'a City Mall Project
- Mechanical Engineer (Air Conditioning - Fire – Sanitary works)
- Consultant Engineer (Air Conditioning - Ventilation - Fire-fighting).
- Supervise the execution of central air conditioning and work as an engineer site (the direct supervision on the implementation raising the quantities - Raising the abstracts) of Aden Hotel.
- Supervise the execution of fire-fighting and working as a site (the direct supervision on the implementation - raising the quantities - Raising the abstracts) to the building of the HQ company in Saudi Arabia.

Supervise the execution of central air conditioning and work as site engineer

- Supervision on the implementation – quantities Accounting - Submitting) to the military hospital building - Surgical Center - Qatar.
- Supervise the execution of the central Air conditioning in the police General Hospital Sana'a.
- MP (Mechanical and Plumbing) works supervisor in Aden Hotel, Aden.
- MP (Mechanical and Plumbing) works supervisor in Aden Refinery complex, Aden.
- MP (Mechanical and Plumbing) works supervisor in the Central Bank in Saudi Arabia.
- Participated in designing the central Air conditioning in Al Rayan Hills.
- Participated in Designing the Surgery rooms, Intensive Case in the General Police Hospital, Sana.
- Design of the HVAC and the Fire Fighting system in the Diamniadio Lake City Senegal.
- Design central air conditioning for the hospital consultant Sana'a Al Raha Beach Hotel Hodeidah , the Red Hall Sana'a and Commercial Bank Sana .

- Revised the design and supervision the implementation at samsung for some projects.
- Revised the design and supervision the implementation in the company of Sweden Trading - General.
- Supervision and implementation in the mechanical work for the Ministry of Youth and Sport - Office Aslami.
- Central air-conditioning design for the laboratory animal and the Ministry of Health - Sana'a - Company Asteriko .
- Engineer Supervisor in the HVAC system of the 48 Military Hospital Sana. Design the ventilation system and smoke compounds Kitchen Chair - Department of Defense - Sana'a.

Key Skills

- Course in Analytical Engineering Design by using computer. University of Technology- Baghdad, Iraq.
- Courses in Engineering Design Program (AutoCAD, 3dmax, 3dstudio) .
- University of Technology- Baghdad, Iraq.
- Courses in Computer Programs (Dows, Windows, Office) Al- Mustansiriya institute, Iraq

Educational Background

- | | |
|-------------|-------------------------------------------------------------------------------------|
| 2002 | Bachelor degree of Mechanical engineering. University of Technology- Baghdad, Iraq. |
| 2003 | Master's degree in Applied Mechanics. University of Technology- Baghdad , Iraq |

REFERENCES

AKON, whose full name is Aliuane Damala Badara Akon Thiam

Mr. Diène Marcel Diagne - CEO of SEMER GROUP

Mr. Khalifa Al-Mazrouei - Chairman of Sahraa Group

Mr. Ali Qadi - Head of Foreign Ministry Employees Association

Mr. Mohedine Al-Zaaby - Owner of Al Bustan Hotel

Mr. Idaros Bazaraa - Toyota Showroom

Mr. Yousef Al-Ali - Line Investment

Partner/Subconsultant

RETAIL AND F&B

Prospect Design International

Design Portfolio



Profile, Services and Clients

- Established in 1996 in Cannes, France, Prospect Design International (PDI) is a boutique interior design firm specialized in providing full interior design consultancy for hospitality projects such as restaurants, nightclubs, lounges, cafes, beach clubs and boutique hotels.
- We at Prospect Design International have an extensive knowledge of the hospitality and food and beverages business and we are able to develop full design concepts from scratch based on specific client's requirements. Our motto is "form follows function", the best designs in the world are based on purpose and function.
- We always create new designs, yet functional and simple while providing with enough substance to our designs in order to get a well-balanced interior between colors, forms and shapes.
- For more than two decades, our diverse team of seasoned, senior professionals have provided holistic, cost-effective solutions for every aspect of successful hospitality concepts globally. Collectively, we believe in nurturing long-term business relationships by providing tailored solutions for every stage of our clients' concept progression.
- We work in cooperation with various practices, providing synergy and added value right down to the smallest detail to maximize market penetration, competitive advantage and return on investment. On every engagement, we work diligently with the client to better understand the objective or issues at hand, intensively analyse and propose solutions from our proprietary resources and then comprise a detailed strategic plan to implement our recommendations.

Our Services

-
- | | | |
|------------------------|-------------------|-----------------------|
| • Concept and Identity | • Detailed Design | • Kitchen Design |
| • Conceptual Design | • Lighting Design | • Acoustic Design |
| • Schematic Design | • Audio Design | • Project Supervision |
-

Our Projects

2020

Bagatelle Courchevel

Courchevel, France

Cove Beach

Dubai, UAE

Celavi

Dubai, UAE

Asil

Dubai, UAE

Brass Monkey

Dubai, UAE

2019

Citywalk Penthouse

Dubai, UAE

Villa Jumeirah

Dubai, UAE

Shellona Beach Club

St Barthelemy

Medusa

Cannes, France

Gotha Nightclub

Cannes, France

Sapori Bice Restaurant

Dubai, UAE

2019

La Guerite

D'Maris, Turkey

La Mome Beach Club

Cannes, France

Cove Beach Caesars Palace

Dubai, UAE

Baoli

Cannes, France

Our Projects

2018

Crazy Fish

Dubai, UAE

Rely Offices

Dubai, UAE

CLAW – Double Tree Hilton

Doha, Qatar

Mido

Cannes, France

Ammos Greek Restaurant

Dubai, UAE

Le Repere

Cannes, France

2018

CELAVI

Kuala Lumpur

Mexika

Riyadh, KSA

King of The Mambo

Colombo, Sri Lanka

CELAVI

Colombo, Sri Lanka

La Guerite

St Tropez, France

Victoria

St Tropez, France

2017

Miss Tess, TAJ Hotel

Dubai, UAE

Sofabulous Showroom

Dubai, UAE

Jimmy'z Nightclub

Monaco, Monte Carlo

Gallus

Dubai, UAE

Crazy Fish

Dubai, UAE

Azure Beach Club

Dubai, UAE

Our Projects

2017

La Mome

Cannes, France

La Guerite

Cannes, France

Base Club

Dubai, UAE

Gotha Nightclub

Dubai, UAE

Claw, Hilton Palm Jumeirah

Dubai, UAE

Shellona Beach Club

St Barthelemy

2016

Billionaire Mansion

Dubai, UAE

Twiga Sumosan

London, UK

Baoli Beach Club

Cannes, France

Forever Rose

Dubai, UAE

Big Smoke Burger

Doha, Qatar

2015

Big Smoke Burger

Dubai, UAE

Movida Nightclub (Redesign)

Dubai, UAE

O2 Nightclub

Dubai, UAE

LUA Restaurant

Dubai, UAE

Tesoro Outdoor Lounge

Dubai, UAE

Cash Club, The Gate Hotel

Dubai, UAE

Yeldizlar Restaurant

Dubai, UAE

Our Projects

2015

Sax Nightclub

Abu Dhabi, UAE

Cove Beach Club

Jumeirah Beach Hotel, Dubai, UAE

Eden Beach Club

Rixos Hotel Palm Island, Dubai, UAE

People by Crystal Night Club

St Regis Hotel, Abu Dhabi, UAE

Provocateur

Four Seasons Hotel, Dubai, UAE

AVEC

Dubai, UAE

People by Crystal

Raffles Hotel, Abu Dhabi, UAE

2014

SASS Cafe

Dubai, UAE

Erik Kayser

Dubai Mall, UAE

Karak House

Dubai, UAE

Erik Kayser

Abu Dhabi Mall, UAE

1826 Collins

Miami, USA

The PAD

Dubai, UAE

Clinton Street Bakery

Dubai, UAE

2014

China White Club

Dubai, UAE

Boardwalk, Dubai Golf Creek

Dubai, UAE

Casa de Tapas, Dubai Golf Creek

Dubai, UAE

Cielo Rooftop Lounge

Dubai Golf Creek, Dubai, UAE

Our Projects

2013

Claw BBQ
Dubai, UAE

Societe Nightclub
Dubai, UAE

Story Nightclub
Dubai, UAE

VIP Room
Dubai, UAE

40 Kong Rooftop Lounge
Dubai, UAE

Grand Central Restaurant
Al Ain, UAE

2012

Donatello restaurant
Dubai, UAE

Donatello Boutique Hotel
Almaty, Kazakhstan

2011

Palais by Crystal Nightclub
Beirut, Lebanon

Villa Blanca Rooftop Lounge
Casablanca, Morocco

Grand Central Restaurant
Abu Dhabi, UAE

Casa mia Restaurant
Cannes, France

King Louis Club in Private Castle
Paris, France

Our Projects

2010

Armani Privé Club & Lounge

Burj Khalifa, Dubai, UAE

Bar Black Pearl

Cannes, France

Bar 72 Croisette

Cannes, France

People Club by Crystal

Raffles Hotel, Dubai, UAE

The Noble House Lounge

Raffles Hotel, Dubai, UAE

The Gramercy Restaurant

DIFC, Dubai, UAE

Restaurant Sass Cafe 2

Monaco, Monte Carlo

2009

Restaurant Mocca

Cannes, France

Restaurant Le Repère

La Napoule, France

Restaurant l'Arc

Paris, France

2008

Restaurant Le Comptoir

Cannes, France

Movida 2

London, UK

C Bar by Crystal

Dubai, UAE

Our Projects

2007

Restaurant TZU

Cannes, France

Restaurant Antonia Gourmet

Dubai, UAE

Club Maddox Club

London, UK

Club Carré Rouge

Casablanca, Morocco

Beach Club La Plage

Beirut, Lebanon

Crystal Beach Club

St-Tropez, France

2006

Restaurant Sass Café

Monte Carlo, Monaco

Restaurant Opium

Belgrade, Serbia

Restaurant Diep

Casablanca, Morocco

Club Oasis

Hammamet, Tunisie

Restaurant-Bar, Byblos Hôtel

St-Tropez, France

2005

Restaurant Upside Down

la croisette Cannes, France

Restaurant DimSum

Nice, France

Night Club VIP Room

Luxembourg, Luxembourg

Night Club LIFE

Cannes, France

Business Café Welton Café

Cannes, France

Our Projects

2004

Restaurant Upside Down
la croisette Cannes, France

Restaurant DimSum
Nice, France

Night Club VIP Room
Luxembourg, Luxembourg

Night Club LIFE
Cannes, France

Business Café Welton Café
Cannes, France

2003

Restaurant Point Rouge
Monaco

Restaurant Restaurant O'Fame
Cannes, France

Restaurant Côté Mougins
Mougins, France

Night Club Love
Cannes, France

Lounge Bar Sky Beach
Cannes, France

Club Charlot Bar
Nice, France

2002

Restaurant Restaurant Nil's
Strasbourg, France

Restaurant l'Avenue
Nice, France

Restaurant Harem
Cannes, France

Restaurant Bay Cafe
Nice, France

Bar Tchink's Bar
Cannes, France

Our Projects

2001

Restaurant Bâoli, La Croisette
Port Canto, Cannes, France

Restaurant Ness, Fellini
Moscou, Russie

2000

Restaurant Farfalla, la Croisette
Cannes, France

Centre Ophtalmologie Telandro
Cannes, France

Beach Club Palm Beach
Casino Palm Beach, Cannes France

Beach Club Garden Beach
Meridien Hotel, France

1999

Restaurant La Via Ferrata
Courchevel (ski resort), France

Restaurant Indochine
Courchevel, France

Our Projects

1998

Salle de jeux Beaulieu Casino

Beaulieu sur mer, France

Bijouterie Ciribelli

Monte Carlo Beach Hotel, Monaco

Luxurious Shopping Mall

Yorkion Center, Limassol, Cyprus

Restaurant La Via Ferrata

Courchevel (Ski Resort), France

Restaurant Indochine

Courchevel, France

1997

Salle de jeux Beaulieu Casino

Beaulieu sur mer, France

Bijouterie Ciribelli

Monte Carlo Beach Hotel, Monaco

Business Lounge

Martinez Hotel, Cannes (50th Film Festival)

Beach Club l'Evasion

la Croisette Cannes, France

Bar les Coulisses

Cannes, France

1996

Restaurant Le Rest

Cannes, France

Bar Loft

Cannes, France

PROJECTS

F&B

Project:
Brass Monkey

Location:
Dubai, UAE

Completion:
2020





Project:
Celavi

Location:
Dubai, UAE

Completion:
2020





Project:
Baoli

Location:
Cannes, France

Completion:
2019





Project:
La Guerite

Location:
St Tropez, France

Completion:
2018





Project:
Victoria

Location:
St Tropez, France

Completion:
2018





Project:
Ammos Greek Restaurant

Location:
Dubai, UAE

Completion:
2018





Project:
Celavi

Location:
Colombo, Sri Lanka

Completion:
2018





Project:
Medusa

Location:
Cannes, France

Completion:
2019





Project:
King of The Mambo

Location:
Colombo, Sri Lanka

Completion:
2018





Project:
Mido

Location:
Cannes, France

Completion:
2018





Project:
Baoli Beach

Location:
Cannes, France

Completion:
2017

BÀOLI BEACH





Project:
La Mome

Location:
Cannes, France

Completion:
2017





Project:
La Guerite

Location:
Cannes, France

Completion:
2017



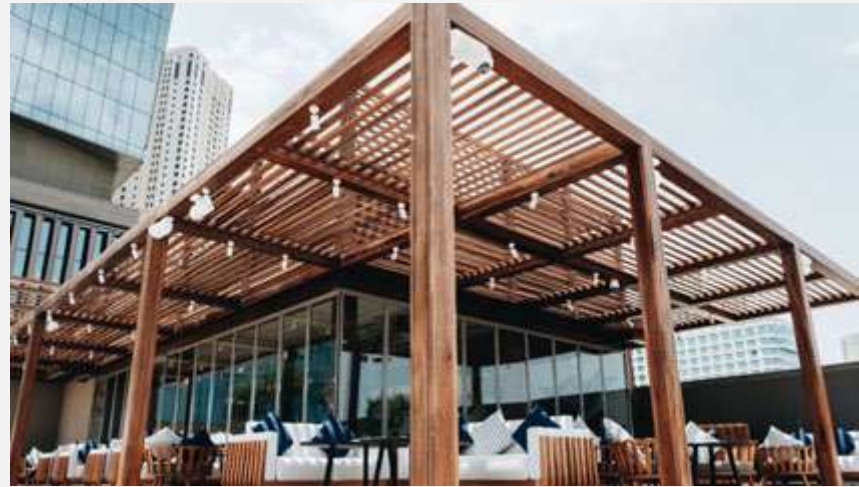


Project:
Azure Beach Club

Location:
Dubai, UAE

Completion:
2017





Project:
Billionaire Manson

Location:
Dubai, UAE

Completion:
2016





Project:
Big Smoke Burger

Location:
Dubai, UAE

Completion:
2015





Project:
Cielo Sky Lounge

Location:
Dubai, UAE

Completion:
2014

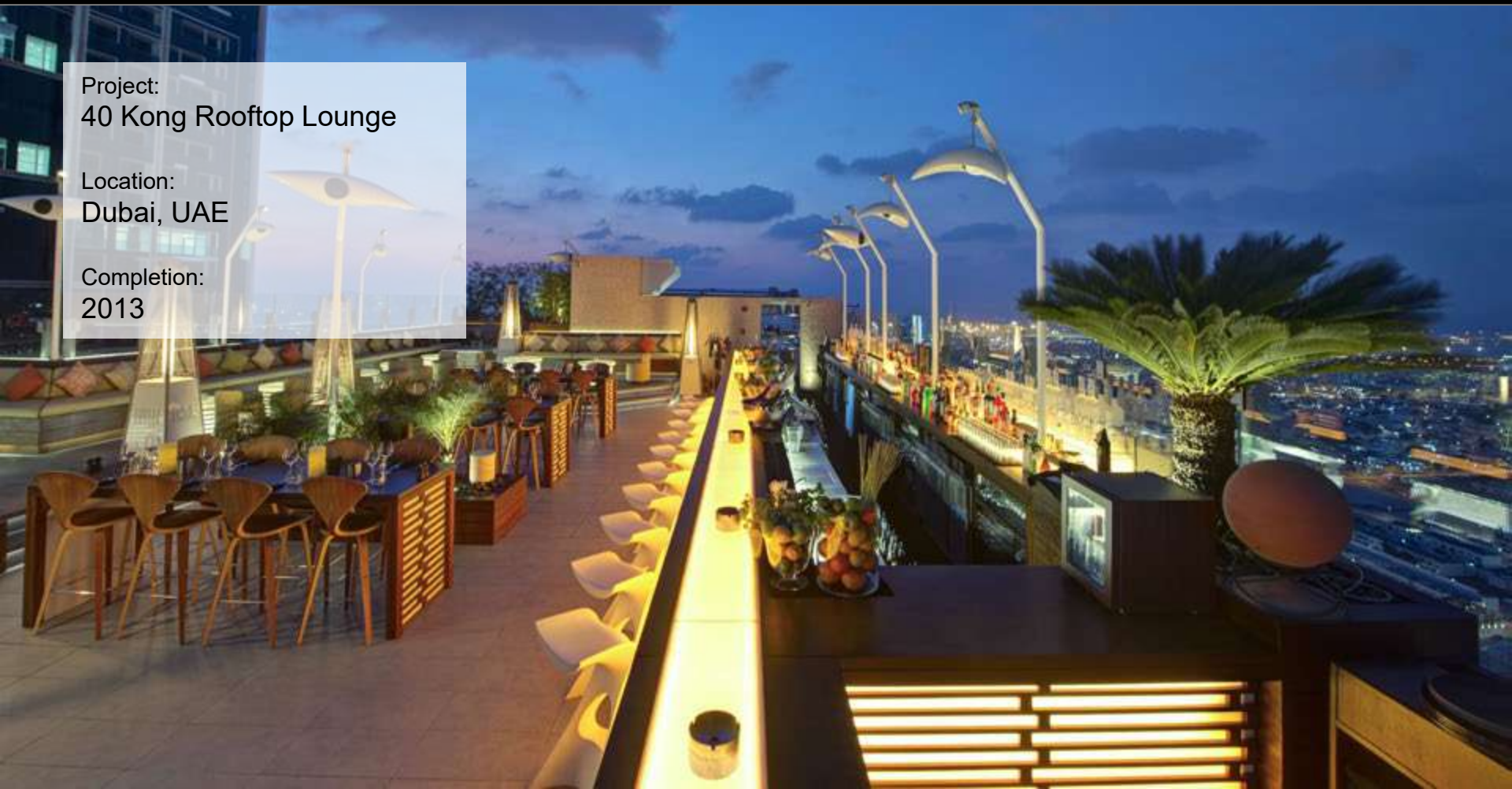




Project:
40 Kong Rooftop Lounge

Location:
Dubai, UAE

Completion:
2013





Project:
The Gramercy

Location:
Dubai, UAE

Completion:
2010





PROJECTS

NIGHT CLUBS

Project:
Gotha Nightclub

Location:
Cannes, France

Completion:
2019





Project:
Jimmy'z Club

Location:
Monaco, Monte Carlo

Completion:
2017



JIMMY'Z



Project:
Base Club

Location:
Dubai, UAE

Completion:
2017





Project:
Provocateur Nightclub

Location:
Dubai, UAE

Completion:
2015

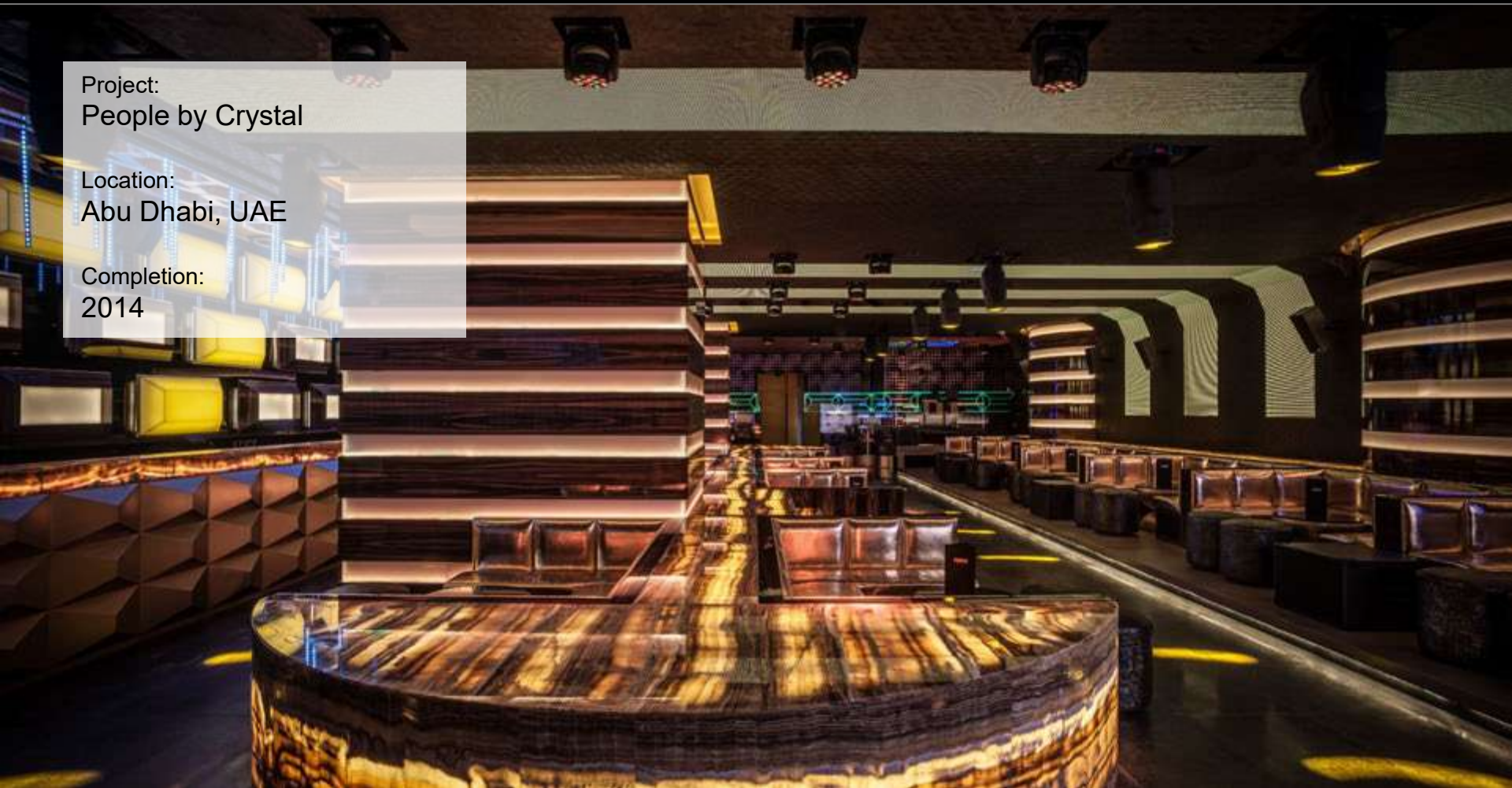




Project:
People by Crystal

Location:
Abu Dhabi, UAE

Completion:
2014





Project:
People by Crystal

Location:
Dubai, UAE

Completion:
2010



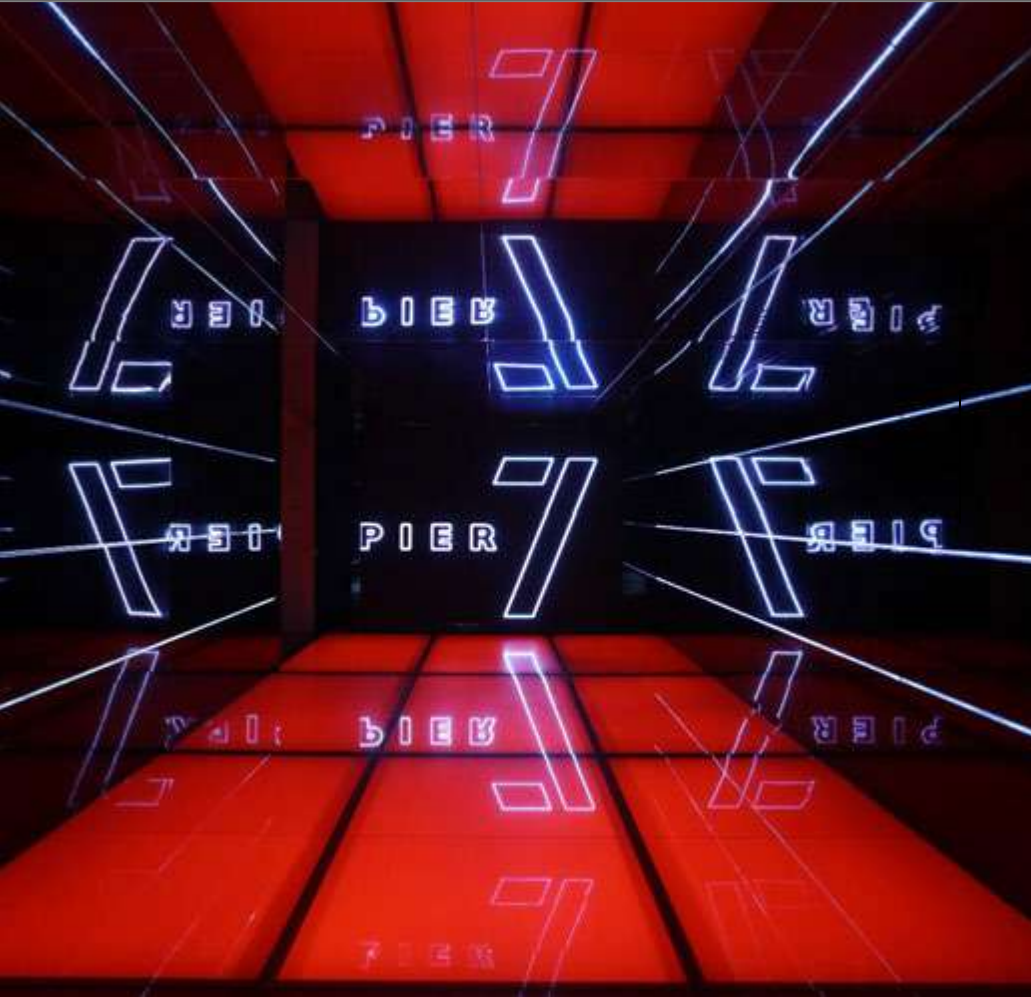


Project:
Pier 7 Outdoor Club

Location:
Beirut, Lebanon

Completion:
2012





PROJECTS

BEACH CLUBS

Project:
Shellona Beach Club

Location:
St Barthelemy

Completion:
2019





Project:
Cove Beach Bluewaters

Location:
Dubai, UAE

Completion:
2018





Project:
Eden Beach Club

Location:
Dubai, UAE

Completion:
2015





PROJECTS

BEACH RESORTS &
BOTIQUE HOTEL

Project:
U Retreat

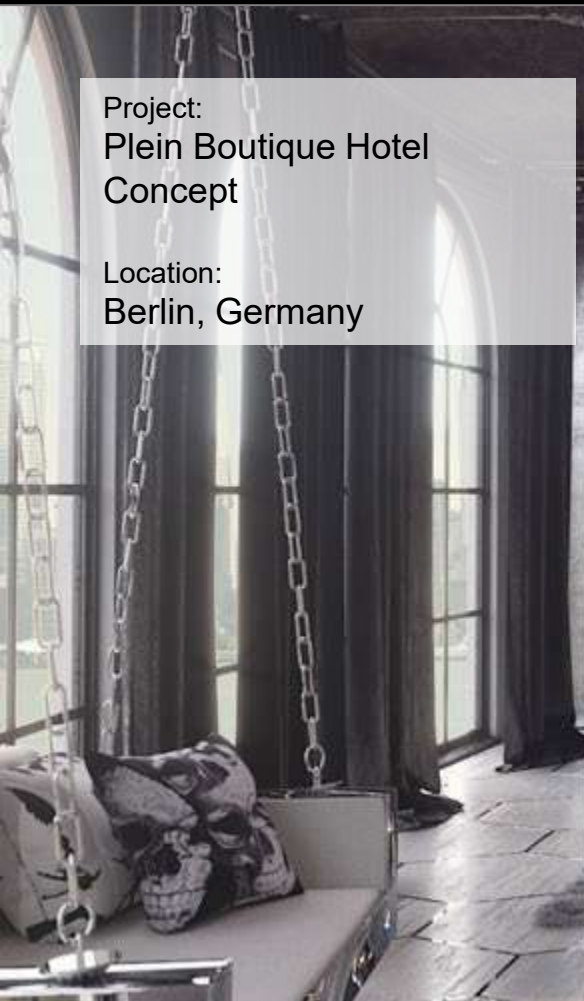
Location:
Adama, Ethiopia





Project:
Plein Boutique Hotel
Concept

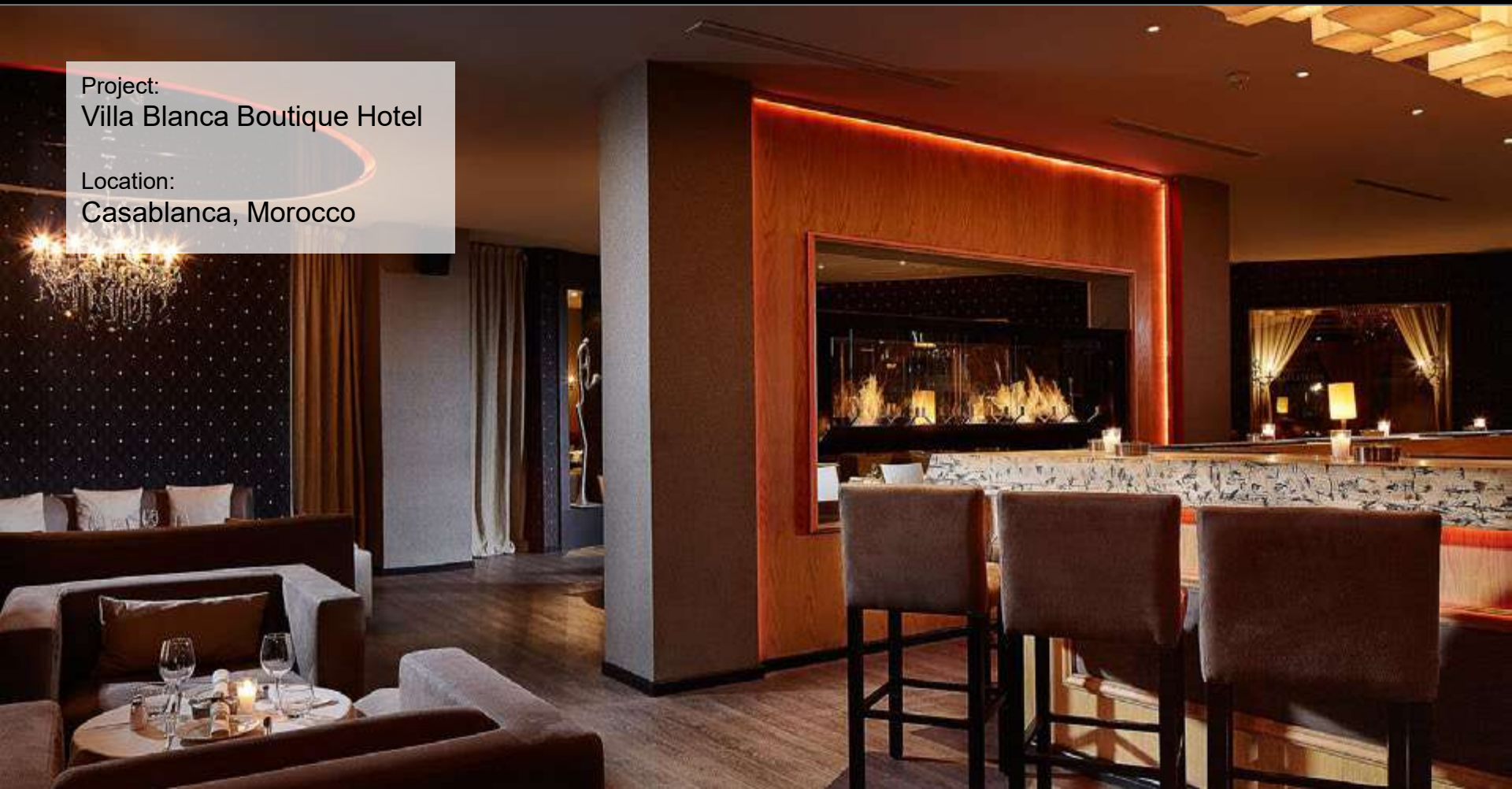
Location:
Berlin, Germany





Project:
Villa Blanca Boutique Hotel

Location:
Casablanca, Morocco





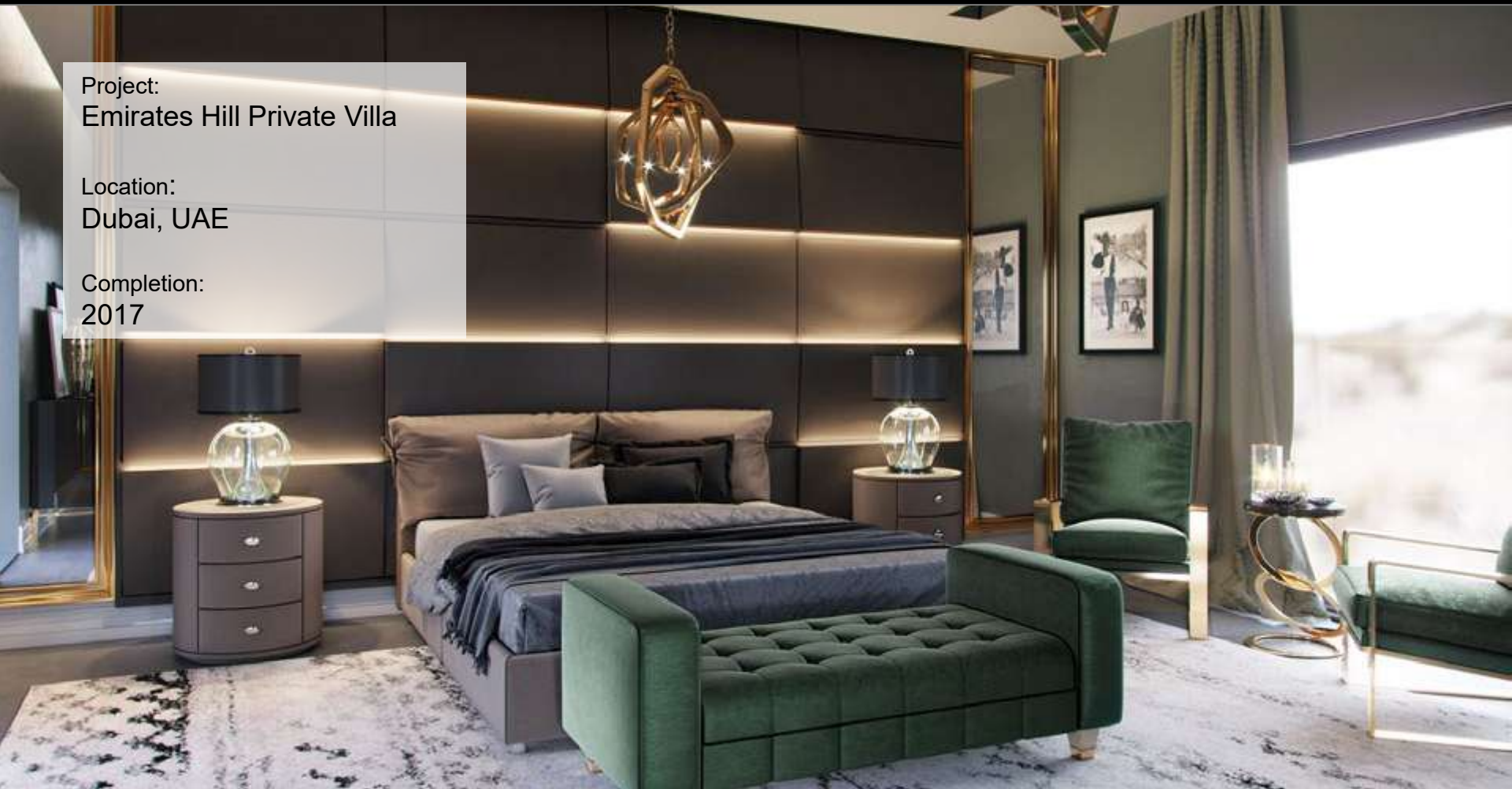
PROJECTS

RESIDENTIAL

Project:
Emirates Hill Private Villa

Location:
Dubai, UAE

Completion:
2017

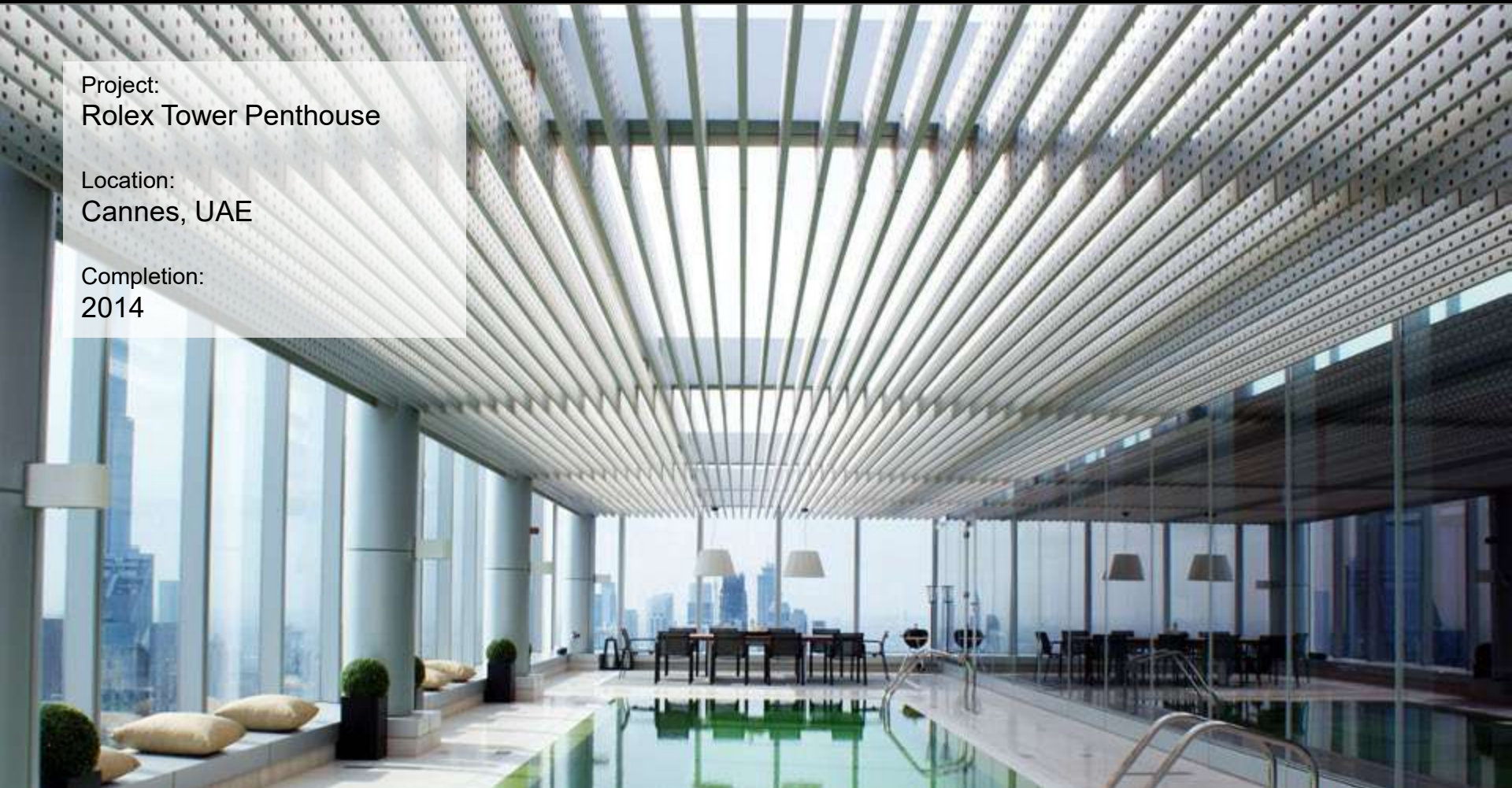




Project:
Rolex Tower Penthouse

Location:
Cannes, UAE

Completion:
2014





Project:
Jumeirah Beach Villa

Location:
Dubai, UAE

Completion:
2020





Project:
Wasl Villa

Location:
Dubai, UAE

Completion:
2017









Project:
Residence de France

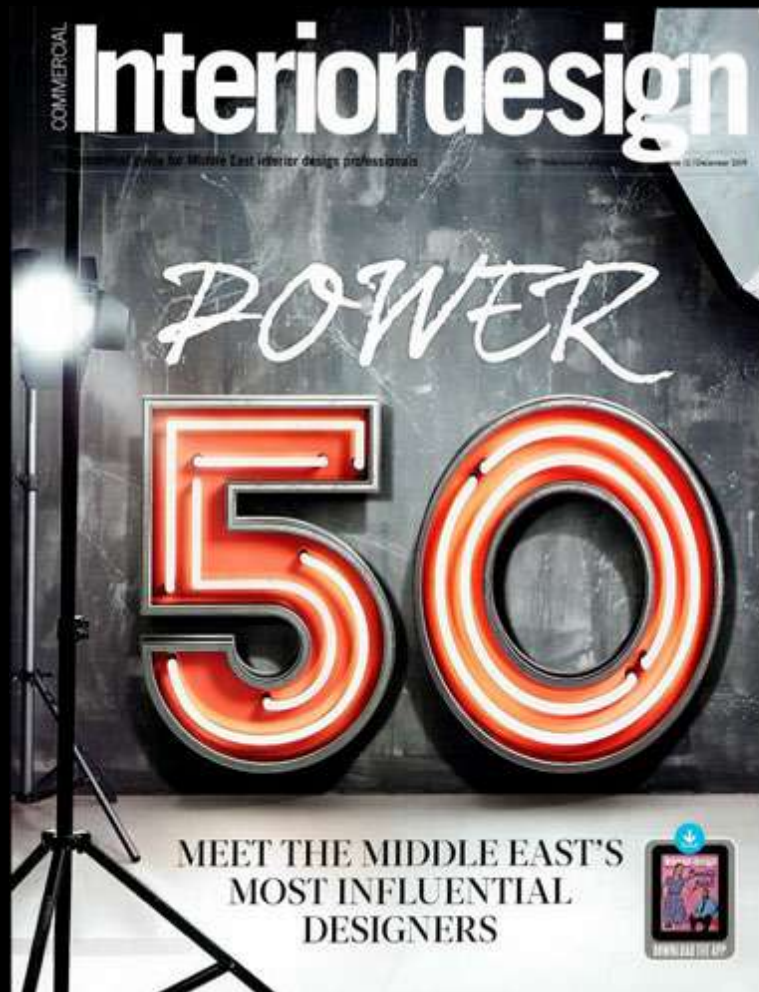
Location:
Cannes, France

Completion:
2016





PRESS RELEASES



47

FADY CHAMS

MANAGING DIRECTOR, PROSPECT DESIGN INTERNATIONAL

Fady Chams is the owner and managing director of hospitality- cum residential practice Prospect Design International (PDI), which is expanding its team and exploring strategic partnerships in Egypt and Saudi Arabia.

Budgets were tightened in 2019, but PDI still hired two designers to increase its team to 12 and expects revenue to increase by up to a fifth this year when compared to 2018.

With some wind in its sails, the company plans to collaborate with firms in the Middle East and North Africa in 2020 to capitalise on rising hospitality demand. PDI is also exploring opportunities for hospitality and residential design in Africa, Canada, Portugal and Sweden. And Chams – returning to the Power 50 list for the first time since 2014 – is also in talks with well-known hotel chains to enhance their food and beverage offerings.

Under Chams' leadership, PDI has long been a go-to firm for a hospitality hotspot. The business has designed projects in France, Spain, Switzerland, Sri Lanka, UAE and the UK, and its recently completed regional projects include Dubai's Cove Beach and Ammos Greek Restaurant.









CASE STUDY



Challenge: The client wanted a modern design that reflected the hotel's luxury and elegance. The design team was challenged to create a space that was both functional and aesthetically pleasing.

Solution: The design team created a modern, minimalist design that incorporated the hotel's existing architecture. The design team used a combination of materials, including wood, stone, and metal, to create a warm and inviting atmosphere.

Result: The design team successfully created a modern, minimalist design that reflected the hotel's luxury and elegance. The design team's solution was a combination of materials, including wood, stone, and metal, to create a warm and inviting atmosphere.

Challenge: The client wanted a modern design that reflected the hotel's luxury and elegance. The design team was challenged to create a space that was both functional and aesthetically pleasing.

Solution: The design team created a modern, minimalist design that incorporated the hotel's existing architecture. The design team used a combination of materials, including wood, stone, and metal, to create a warm and inviting atmosphere.

Result: The design team successfully created a modern, minimalist design that reflected the hotel's luxury and elegance. The design team's solution was a combination of materials, including wood, stone, and metal, to create a warm and inviting atmosphere.

Challenge: The client wanted a modern design that reflected the hotel's luxury and elegance. The design team was challenged to create a space that was both functional and aesthetically pleasing.

Solution: The design team created a modern, minimalist design that incorporated the hotel's existing architecture. The design team used a combination of materials, including wood, stone, and metal, to create a warm and inviting atmosphere.

Result: The design team successfully created a modern, minimalist design that reflected the hotel's luxury and elegance. The design team's solution was a combination of materials, including wood, stone, and metal, to create a warm and inviting atmosphere.



CASE STUDY

CASE STUDY



Challenge: The client wanted a modern design that reflected the hotel's luxury and elegance. The design team was challenged to create a space that was both functional and aesthetically pleasing.

Solution: The design team created a modern, minimalist design that incorporated the hotel's existing architecture. The design team used a combination of materials, including wood, stone, and metal, to create a warm and inviting atmosphere.

Result: The design team successfully created a modern, minimalist design that reflected the hotel's luxury and elegance. The design team's solution was a combination of materials, including wood, stone, and metal, to create a warm and inviting atmosphere.

CASE STUDY



Challenge: The client wanted a modern design that reflected the hotel's luxury and elegance. The design team was challenged to create a space that was both functional and aesthetically pleasing.

Solution: The design team created a modern, minimalist design that incorporated the hotel's existing architecture. The design team used a combination of materials, including wood, stone, and metal, to create a warm and inviting atmosphere.

Result: The design team successfully created a modern, minimalist design that reflected the hotel's luxury and elegance. The design team's solution was a combination of materials, including wood, stone, and metal, to create a warm and inviting atmosphere.



The design nomad

FROM BOUTIQUE LABRADORIA AND DUBAI, TONY (AND ANA) HAD A HAND IN THE DESIGN OF THE NEW HAR SHISHA LOUNGE. LEFT THEIR MARK ON A NUMBER OF GLOBAL HOTSPOTS.

INTERVIEW



But when you walk into the Har Shisha Lounge, you're not just seeing a modern interior design project. You're seeing a piece of art. The lounge is a masterpiece of modern design, with its curved, white, curved structure and its glowing interior. It's a space that's both functional and beautiful, and it's a testament to the power of good design.

Har Shisha Lounge is a modern interior design project that's both functional and beautiful. It's a space that's both functional and beautiful, and it's a testament to the power of good design.

INTERVIEW



Har Shisha Lounge is a modern interior design project that's both functional and beautiful. It's a space that's both functional and beautiful, and it's a testament to the power of good design.

Har Shisha Lounge is a modern interior design project that's both functional and beautiful. It's a space that's both functional and beautiful, and it's a testament to the power of good design.

INTERVIEW

Prospect Design is a landscape architecture firm located in San Francisco, California. The firm was founded in 1994 by two landscape architects, David H. and Susan H. Prospect Design is a landscape architecture firm located in San Francisco, California. The firm was founded in 1994 by two landscape architects, David H. and Susan H.

Prospect Design is a landscape architecture firm located in San Francisco, California. The firm was founded in 1994 by two landscape architects, David H. and Susan H. Prospect Design is a landscape architecture firm located in San Francisco, California. The firm was founded in 1994 by two landscape architects, David H. and Susan H.



INTERVIEW



Prospect Design is a landscape architecture firm located in San Francisco, California. The firm was founded in 1994 by two landscape architects, David H. and Susan H. Prospect Design is a landscape architecture firm located in San Francisco, California. The firm was founded in 1994 by two landscape architects, David H. and Susan H.

Prospect Design is a landscape architecture firm located in San Francisco, California. The firm was founded in 1994 by two landscape architects, David H. and Susan H. Prospect Design is a landscape architecture firm located in San Francisco, California. The firm was founded in 1994 by two landscape architects, David H. and Susan H.



Prospect Design is a landscape architecture firm located in San Francisco, California. The firm was founded in 1994 by two landscape architects, David H. and Susan H. Prospect Design is a landscape architecture firm located in San Francisco, California. The firm was founded in 1994 by two landscape architects, David H. and Susan H.

Prospect Design is a landscape architecture firm located in San Francisco, California. The firm was founded in 1994 by two landscape architects, David H. and Susan H. Prospect Design is a landscape architecture firm located in San Francisco, California. The firm was founded in 1994 by two landscape architects, David H. and Susan H.

Prospect Design International

Project: 2000-2001 Prospect Design Inc.
Area: 100,000 sq. ft.

Prospect Design is a landscape architecture firm located in San Francisco, California. The firm was founded in 1994 by two landscape architects, David H. and Susan H. Prospect Design is a landscape architecture firm located in San Francisco, California. The firm was founded in 1994 by two landscape architects, David H. and Susan H.

Prospect Design is a landscape architecture firm located in San Francisco, California. The firm was founded in 1994 by two landscape architects, David H. and Susan H. Prospect Design is a landscape architecture firm located in San Francisco, California. The firm was founded in 1994 by two landscape architects, David H. and Susan H.





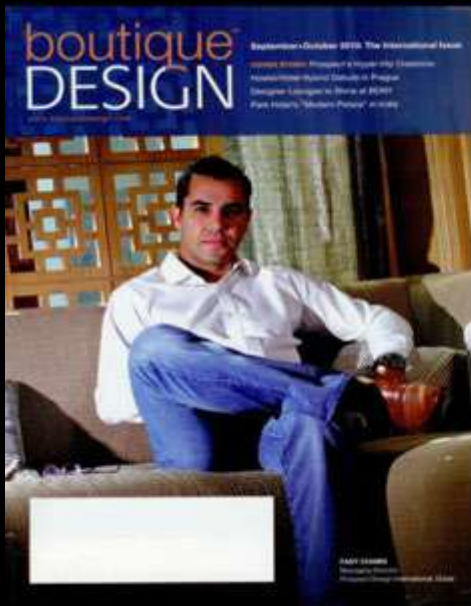


and forests, and coastal communities depending from the coastline, there is a definite sense of shared struggle.

Indigenous "Original nations" are seen to be the truest and most authentic, while all current nations, such as Chinese, have been absorbed to form a single, new and universal identity called "multi-nationalism or the New American Nation." And to create a full ethnographic of Chinese dragons was granted to the writer, writing as a foreigner to the multi-ethnic nation and seeking a way of not only to be a Chinese multi-ethnic.

In time, a great success for both the nation, and the individual.

While the construction program has been increased in the highway, Federal Highway account is still the major source for the majority of the city roads. With eggplant and orange juice, citizens receive the maximum benefit from the program.



The creation of these problems in place of "Wagnerian" effects, which usually could not occur apart from a direct kind of magical intervention, the two composers offered to compare with each other in the history of the musical imagination in Berlin. Wagner's grandiose theories, the foundation of a cult, were thus in effect Wagnerianized, a further, considerable step toward

“Let the gods rule. The despotic and tyrannical rulers, which cannot be morally driven, profane and worthy to command in them.” The suggestion, however, based on common sense, is proven. “We must be strong,” says the author, “in order to drive other things to the point of non-existence.”



Cross-Continental Appeal

Masters of a high-end aesthetic, the duo is set to bring its vision to life with a cross-continental check list for Prospect Design International's Gary and Faby Cheng.

BY JENNIFER WELLS, PROSPECT DESIGN


When it comes to creating the high-end aesthetic, Gary and Faby Cheng are the masters of a high-end aesthetic. The duo is set to bring its vision to life with a cross-continental check list for Prospect Design International's Gary and Faby Cheng.

As an interior designer, I've seen the most innovative and high-end aesthetic designs. However, innovation and precision, that's what I'm looking for.

These designers, influenced by their own upbringing, at a Prospect Design International Cheng Studio, really make a difference in the way they approach design. Gary and Faby Cheng are the masters of a high-end aesthetic.

With its unique style, Prospect Design International is a company that is always looking for the next big thing. Gary and Faby Cheng are the masters of a high-end aesthetic.

Prospect Design International is a company that is always looking for the next big thing. Gary and Faby Cheng are the masters of a high-end aesthetic.



UPSTAIRS DOWNSTAIRS

Prospect Design International is a company that is always looking for the next big thing. Gary and Faby Cheng are the masters of a high-end aesthetic.

With its unique style, Prospect Design International is a company that is always looking for the next big thing. Gary and Faby Cheng are the masters of a high-end aesthetic.

Prospect Design International is a company that is always looking for the next big thing. Gary and Faby Cheng are the masters of a high-end aesthetic.



Prospect Design International is a company that is always looking for the next big thing. Gary and Faby Cheng are the masters of a high-end aesthetic.

With its unique style, Prospect Design International is a company that is always looking for the next big thing. Gary and Faby Cheng are the masters of a high-end aesthetic.

Prospect Design International is a company that is always looking for the next big thing. Gary and Faby Cheng are the masters of a high-end aesthetic.



Awards and Recognitions



Best Club Award Winner 2005
Movida Club in London



Best Club Award Winner 2006
Movida Club in London



Best Club Award Winner 2008
Maddox Club in London



Best Club Award Winner 2011
Maddox Club in London



Best Club Award Winner 2011
People by Crystal in Dubai



Best Club Award Winner 2012
People by Crystal in Dubai



Best New Club Award 2012
Palais by Crystal in Beirut



Best New Club Award Winner 2012
Movida Club in Dubai



Best New Club Award 2012
Pier 7 in Beirut



Best European Restaurant 2014 Winner
Casa De Tapas in Dubai



Best American Restaurant 2014 Winner
Claw BBQ in Dubai



Best Bar Award Winner 2014
Cielo in Dubai



Residential Space Small
2014 Winner



THANK YOU-MERCI
