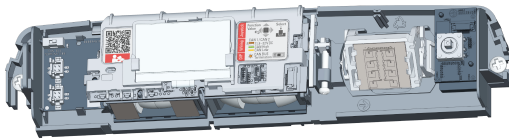
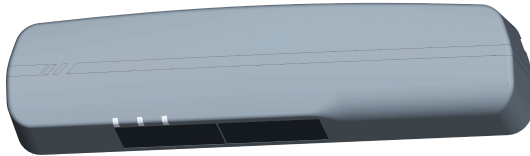


DualSense D CAN

Sensor for activating and safeguarding automatic sliding doors, including emergency exits, in accordance with EN 16005 and DIN 18650, with CANopen interface in accordance with EN 50325



Technology	Active infrared (AIR) Radar
Mounting height	min. 1.8 m, max. 4.0 m EN 16005 up to 3.0 m DIN 18650 up to 3.0 m
Dimensions of field/spot on the floor	See the specifications for mounting height 2.20 m below
Dimensions of AIR field	max. 2.00 x 0.20 m
Dimensions of AIR spot	30 x 30 mm
Number of AIR spots	2 rows with 12 spots each
Performance level AIR	PLd, Cat. 2 (EN ISO 13849-1)
Dimensions of wide radar field (W x L)	min. 1.90 x 1.00 m, max. 4.00 x 2.00 m
Dimensions of narrow radar field (W x L)	min. 1.00 x 4.00 m, max. 2.00 x 4.00 m
Radar transmission frequency	24.2 GHz
Radar transmission output	< 13 dBm
Radar performance level	PLd, Cat. 2 (EN ISO 13849-1) for frequency or voltage output

Interface

Bus protocol	CANopen acc. to 50325
Safety concept	IEC 61784-3
Performance level CAN	PLd, Cat. 2 (EN ISO 13849-1)
Available bit rates	125 kbit/s, 250 kbit/s
Available network addresses	1 – 127

Mechanical data

Housing material	ABS / PA
Housing color	black, silver, white
Dimensions (L x W x D)	252 x 61 x 51 mm
Weight	250 g
Protection class	IP54 (EN 60529)

Electrical data

Supply voltage	11.5 – 32 V DC
Operating current	max. 120 mA at 24 V
Inrush current	max. 240 mA

Ambient conditions

Ambient temperature	min. -20 °C, max. +60 °C
Relative humidity	max. 95 %, non-condensing

Box contents

Sensor with housing, mounting material, drilling template, control cable, DoC document, manual

Notice on conformity

CE MD 2006/42/EC RED 2014/53/EU
RoHS 2011/65/EU

Technical documentation



You will find all documents on the manufacturer website
www.bircher.com

If you have any questions about the device, please contact us:

✉ service@bircher.com ☎ +41 52 687 1366

BBC Bircher Smart Access

BBC Bircher AG, Wiesengasse 20, CH-8222 Beringen
www.bircher.com