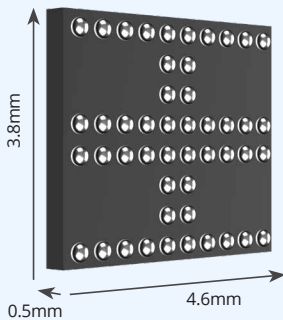


# Integrated Core Power (12A)

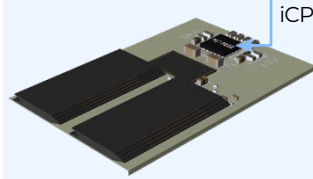
## #PSCP1000

### DIMENSIONS



### APPLICATIONS

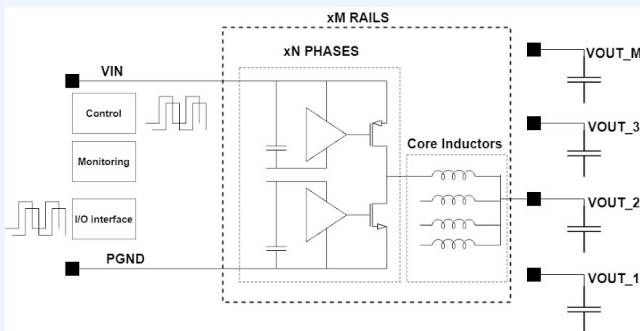
- High Bandwidth Memory
- Flash Memory
- Industrial



### PRODUCT FEATURES

- 20mm<sup>2</sup> footprint
- Efficiency  $V_{in}=3.3V$ ,  $I_{load}=1A$ ,  $V_{out} = 1.8V$  92.4%
- 4 voltage rails
  - 2A typ/3A peak per rail
  - Each rail programmed independently
- Parallel mode - multiple rails shorted
- Input voltage range: 3.3V +/-10%
- Output voltage range: 0.6V to 2.5V
  - Accuracy: +/-2%
- Inductor: embedded planar ferrite technology
- Switching frequency: 15MHz
- Max duty cycle: 85%
- Output voltage ripple: 10mV pk-pk
- Soft start & stop programmability
- Remote ground and voltage sense
- Communication : i<sup>2</sup>c
- Telemetry: input/output voltage, output current, temperature (5points), remote voltage sensing
- Package Thermal Resistance: <30 Kelvin/W
- Wide operating temperature range: -40C to 80C
- Reliability: 100khrs @ Ta 80C, Tjmax @ 125C

### TWO MAX COILS PER OUTPUT



### ORDER INFORMATION

#### Product Link

tbd

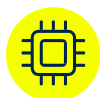
#### Product Summary

Order Code	PSCP1000
Package	WLCSP (3.8 x 4.6 x 0.5 mm)*
Packaging	Tape & Reel

\* subject to change

**60% COMPONENT COUNT REDUCTION**


**Fully integrated:**  
IC + Ferrite Inductor:  
ease of design



**High power density:**  
significant overall  
space reduction



**High efficiency:**  
reduced power  
consumption



**Low parasitics:**  
beneficial for  
EMI compliance