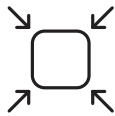


ZELLAMID® 900 AS SW

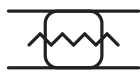
POM-C antistatic



ANTISTATIC
PROPERTIES



HIGH DIMENSIONAL
STABILITY



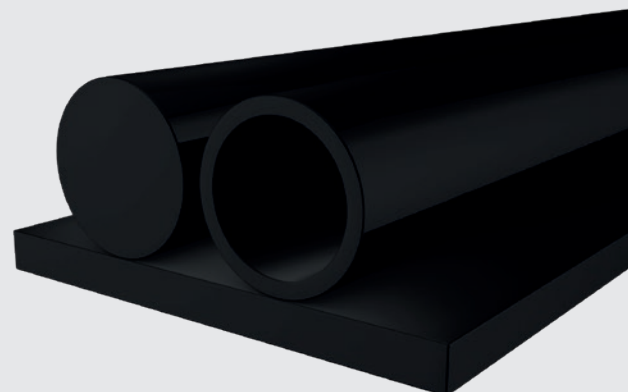
LOW
FRICTION



**ANTISTATIC. PRECISE. RELIABLE.
WHEN POM CONDUCTS SAFETY.**

ZELLAMID® 900 AS SW (POM-C antistatic, black) combines the typical advantages of POM – high dimensional stability, low friction, and good machinability – with antistatic properties. This prevents electrostatic charging and enables safe dissipation, ideal for applications in sensitive production environments.

ZELLAMID® 900 AS SW is frequently used in conveyor technology, mechanical and plant engineering, as well as electronics manufacturing. Typical applications include sliding guides, rollers, and assembly elements where antistatic properties are required to prevent dust attraction and sparking.



Please contact us
for more information

+43 6547 8417 · office@zellmaterials.com · ZELLMATERIALS.com

ZELLAMID® 900 AS SW

Industry	Component	Requirement	Reason
Conveyor Technology	Sliding guides, rollers	Antistatic & wear resistance	ZELLAMID® 900 AS SW prevents charging and remains durable in continuous operation
Electronics Manufacturing	Assembly elements, covers	Dust and spark prevention	ZELLAMID® 900 AS SW dissipates charges and protects sensitive components
Mechanical Engineering	Precision parts, housings	Dimensional stability & machinability	ZELLAMID® 900 AS SW is easy to machine precisely and remains dimensionally stable
Packaging & Logistics Technology	Guide rails, deflectors	Low-friction sliding with antistatic properties	ZELLAMID® 900 AS SW combines low friction with safe charge dissipation

