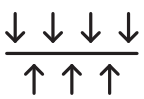
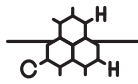


ZELLAMID® 1900 GF40

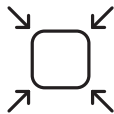
PPS + 40 % Glass fibre



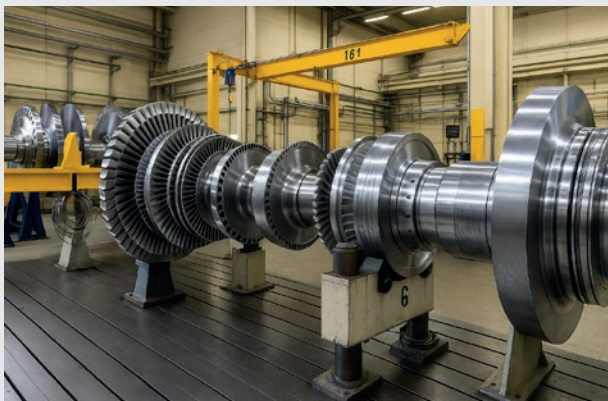
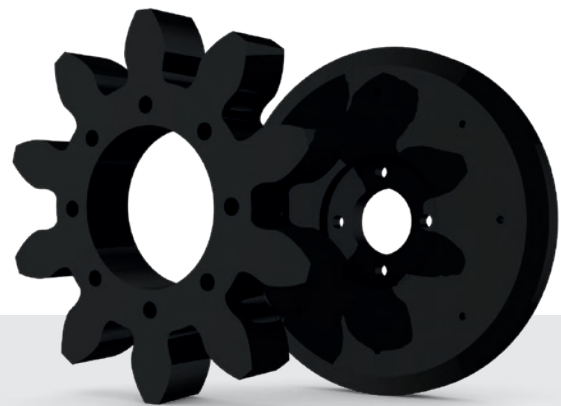
HIGH
STIFFNESS



CHEMICAL
RESISTANT

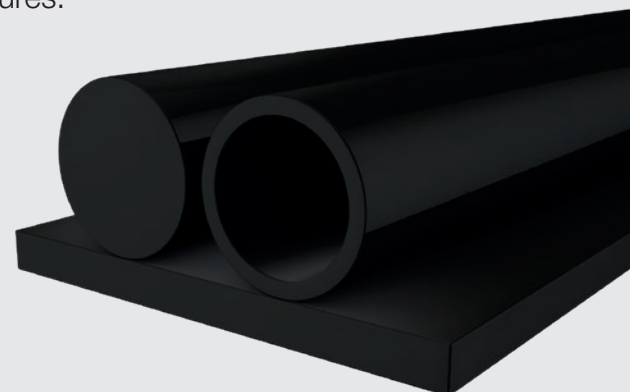


DIMENSIONAL
STABILITY UNDER
CONTINUOUS LOAD



**LOW FRICTION. WEAR-RESISTANT.
RELIABLE. WHEN POLYAMIDE
RUNS QUIETER.**

ZELLAMID® 1900 GF40 is a highly reinforced PPS compound with 40% glass fiber content. It excels through outstanding dimensional stability, very high stiffness, and resistance to temperature and chemicals. The material is ideal for load-bearing or screwed components that remain reliable and shape-stable even under continuous stress. It is used in drive, fluid, and energy technology as well as in measurement and control technology. Typical applications include flanges, pump covers, distribution housings, or support plates. In these areas, it provides long-term dimensional stability, high stiffness, and resistance to media and temperatures.



Please contact us
for more information

+43 6547 8417 · office@zellmaterials.com · ZELLMATERIALS.com

ZELLAMID® 1900 GF40

Industry	Component	Requirement	Reason
Drive Technology	Flanges, housings	High stiffness & long-term strength	ZELLAMID® 1900 GF40 maintains shape stability even under long-term load
Fluid Technology	Pump covers, distributors	Chemical & media resistance	ZELLAMID® 1900 GF40 reliably resists aggressive media
Energy Technology	Support plates, insulators	Temperature & insulation resistance	ZELLAMID® 1900 GF40 combines heat resistance with electrical insulation
Measurement & Control Technology	Structural parts, assembly elements	Dimensional stability & precision	ZELLAMID® 1900 GF40 provides tight tolerances and high dimensional stability

