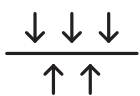
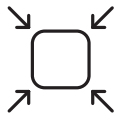


# ZELLAMID® 202 GF30

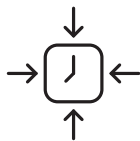
PA 6 + 30 % Glass fibre



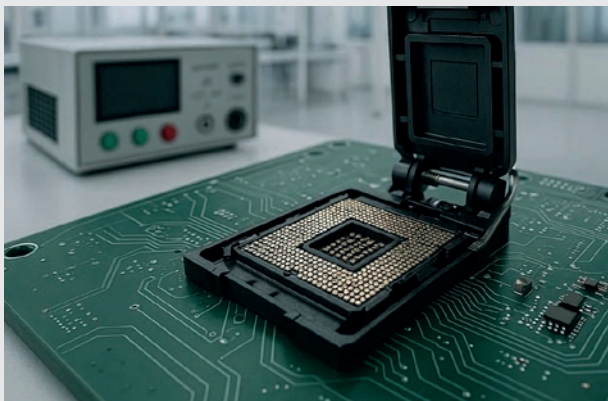
HIGH  
STIFFNESS



HIGH DIMENSIONAL  
STABILITY



LOW CREEP  
TENDENCY



**REINFORCED. STABLE. FORM-RETAINING. WHEN POLYAMIDE NEEDS TO ENDURE MORE.**

**ZELLAMID® 202 GF30** (PA 6 + GF30) combines the toughness of polyamide with reinforcement from glass fibers. The material impresses with high stiffness, dimensional stability, and low creep tendency – ideal for components that are permanently under load and must reliably retain their shape.

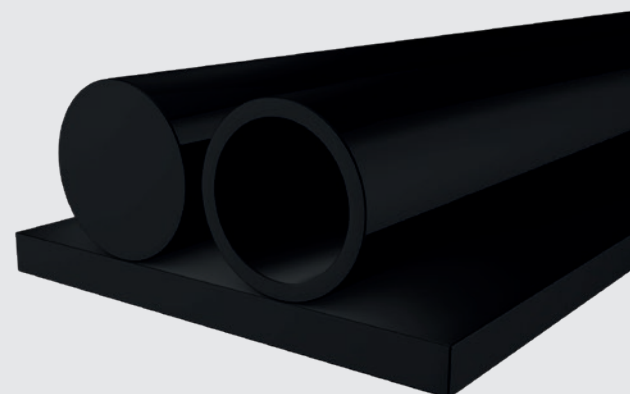


**ZELLAMID® 202 GF30** has significantly higher stiffness and strength than unreinforced PA 6, thanks to its glass fiber content. It is preferred for highly stressed structural parts where shape stability, dimensional accuracy, and minimal deformation under load are critical.



Please contact us  
for more information

+43 6547 8417 · [office@zellmaterials.com](mailto:office@zellmaterials.com) · [ZELLMATERIALS.com](http://ZELLMATERIALS.com)



# ZELLAMID® 202 GF30

Industry	Component	Requirement	Reason
<b>Mechanical Engineering</b>	Bearing housings, clamping jaws	High stiffness and dimensional stability	<b>ZELLAMID® 202 GF30</b> remains shape-stable and shows minimal deformation under continuous load
<b>Automotive</b>	Engine and transmission parts	Mechanical strength, screwability	<b>ZELLAMID® 202 GF30</b> is reinforced with glass fibers, enabling durable structural components
<b>Conveyor Technology</b>	Sliding guides, support plates	Wear resistance, load capacity	<b>ZELLAMID® 202 GF30</b> is more robust than standard PA and reduces deformation
<b>Agricultural / Heavy Duty Machinery</b>	Mounts, covers	Weight reduction while maintaining stability	<b>ZELLAMID® 202 GF30</b> combines high stiffness with low weight as a metal replacement

