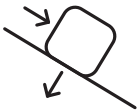


ZELLAMID[®] 250 PE

PA 6.6 + Polyethylene Tribotype



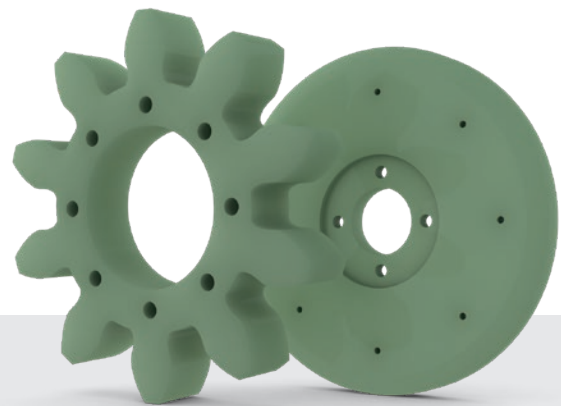
GOOD
SLIDING PROPERTIES



LOW
FRICTION



LOW
WATER ABSORPTION



**LOW FRICTION. WEAR-RESISTANT.
RELIABLE. WHEN POLYAMIDE
RUNS QUIETER.**

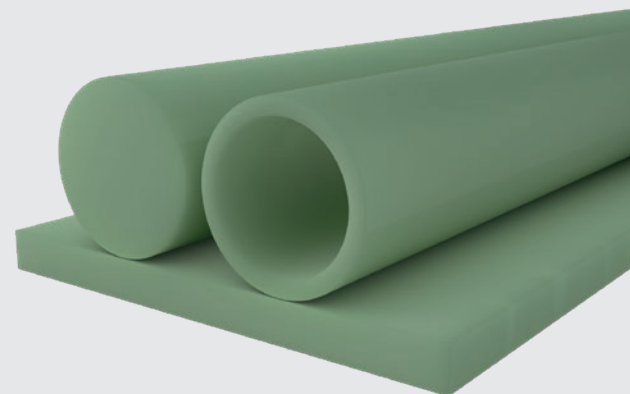
ZELLAMID[®] 250 PE (PA 6.6 + PE) combines the advantages of PA 6.6 with improved sliding properties. The material offers better sliding ability, less friction, and slower wear. Perfect for moving components in machinery.

ZELLAMID[®] 250 PE absorbs less moisture than cast polyamide (PA 6 G) and is therefore often used in crane construction for slide guides and wear-resistant parts, since it remains dimensionally stable even when exposed to moisture.



Please contact us
for more information

+43 6547 8417 · office@zellmaterials.com · ZELLMATERIALS.com



ZELLAMID® 250 PE

Industry	Component	Requirement	Reason
Mechanical Engineering	Slide guide	Low friction, high wear resistance	PE modification reduces friction, long service life
Crane Construction	Slide rails, sliding elements	Dimensional stability under moisture, continuous load	Low water absorption, good stability in wet conditions
Conveyor Technology	Slide rails	Good sliding properties, quiet operation	Low friction and good damping due to PE content
Automotive Industry	Bearing bushings	Low friction, temperature-resistant	Combination of strength and slide-optimized surfac
Plant Engineering	Guide elements	Smooth running under load	Wear-resistant and friction-optimized
Packaging Industry	Slide guides	Easy running at high cycle rates	PE additive reduces friction, increases efficiency

