



MV MANTA SENA

GENERAL PARTICULARS

Name	MANTA SENA
Flag	LIBERIA
Call-sign	5LEX4
IMO-no.	9338137
Port of registry	MONROVIA
Year built/shipyard	2006 / KANDA SHIPBUILDING
Ice-class	N/A
P&I	THE STANDARD CLUB UK LTD
Class	NK
NAABSA	YES
ITF	YES

TECHNICAL PARTICULARS

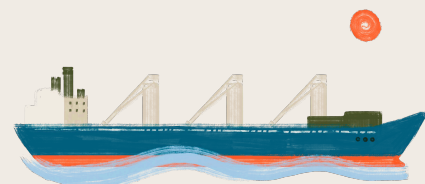
Main engine	mitsubishi / 6UEC52LA
Speed loaded	11.50 KTS
Speed ballast	12.00 KTS
Consumption loaded	21.0 MT IFO, 0.1 MT MDO
Consumption ballast	20.0 MT IFO, 0.1 MT MDO
Port idle	2.70 MT IFO, 0.2 MT MDO
Port working	4.50 MT IFO, 0.2 MT MDO
Fuel type Main Engine	VLSFO
Fuel type Aux. Engine	VLSFO
Bowthruster fitted	NO
Bunker capacity	1577.67 CBM
Freshwater capacity	229.00 CBM
Ballastwater capacity	123.60 CBM
Deballasting speed cbm/hour	350 CBM/HR
Lub oil capacity	72.68 CBM

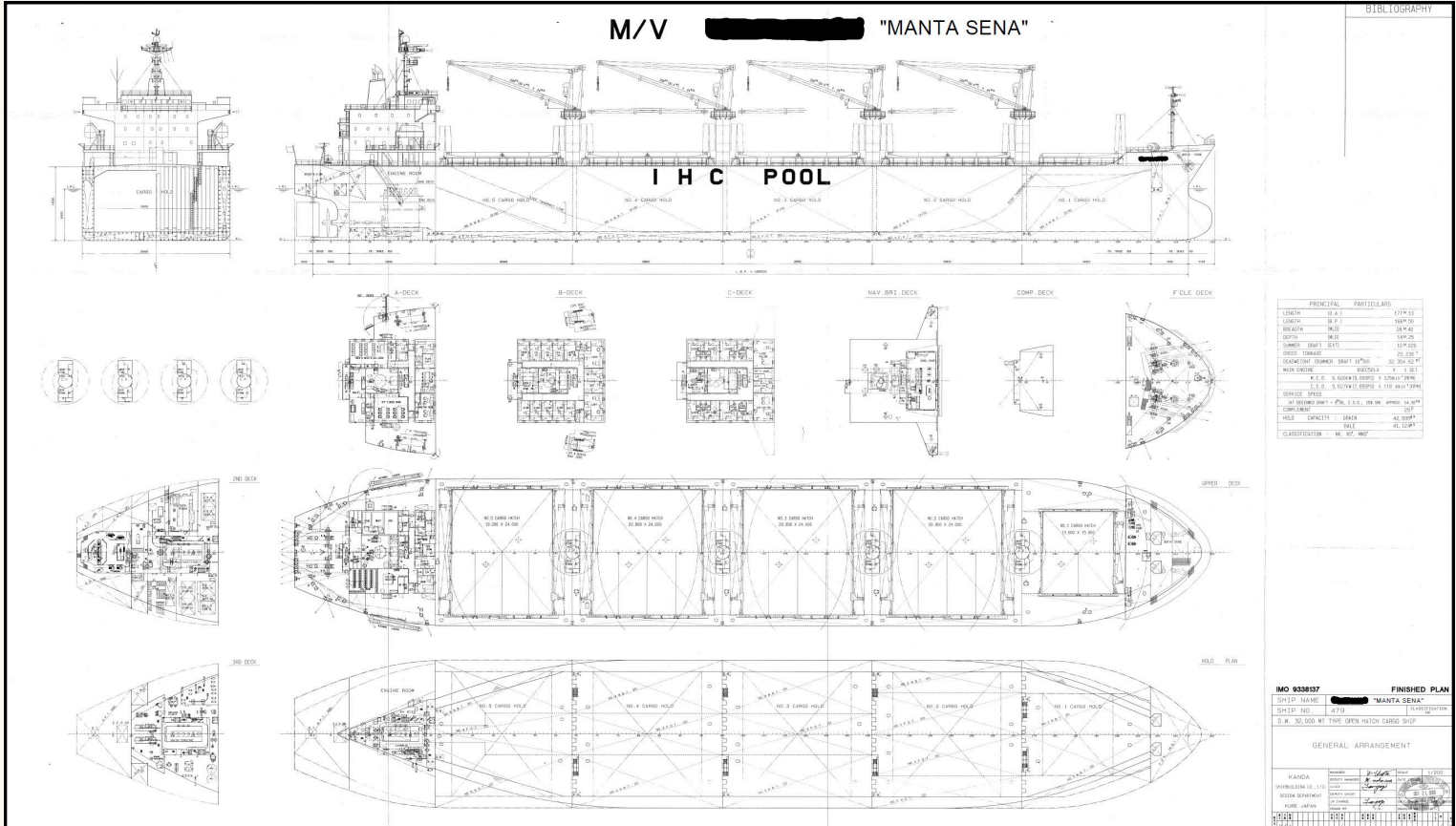
VESSEL PARTICULARS

LOA	177.13 M
LBP	168.50 M
Beam	28.40 M
Depth Mid	14.25 M
Draft Summer	10.02 M
Draft Winter	9.812 M
Ballast draft	6.2 M
GT	20.236
NT	10947
Displacement	39.678 MT
Deadweight	32.354,00 MT
DWCC Summer	32.354,62 MT
DWCC Winter	31.442,83 MT
Airdraft ballast/laden	34.60/30.08 M
Distance WLTHC in full ballast	11.45 M
Immersion/TPC	43.84 CM
Collapsible foremast	N/A
Cranes	4

HOLD PARTICULARS

No. Of holds/hatches	5/5
Hold(s) capacity grain	42.595 CBM / 1.504.228 CBFT
Hold(s) capacity bale	41124 CBM / 1.452.280 CBFT
Box shaped	YES
Height of hold	14.25 M
Type of hatches	FOLDING TYPE
Hatch Dimension (LxW)	20.8 M/ 24.0 M
Cement holes/diameter	10 / 700 MM
Tank top/hatch cover strength	15 MT/4.60 MT
Max steel coil weight	15 MT
Tweendeck strength	N/A
Ventilation (air changes/h)	3 AC/H
Vent. mechanical/electrical/natural	NATURAL
CO2 fitted	YES





Navi Merchants A/S

📍 Pakhus 48, Klubiensvej 22, DK-2150 Nordhavn

✉ E: chartering@navimerchants.com

✉ E: operations@navimerchants.com

🌐 Copenhagen, Denmark

☎ +45 3996 5320

🌐 www.navimerchants.com

