



# MV HEINZ

## GENERAL PARTICULARS

Name	HEINZ
Flag	PORTUGAL
Call-sign	CQ2031
IMO-no.	9986403
Port of registry	MADEIRA
Year built/shipyard	2025 / COCHIN SHIPYARD
Ice-class	1B
P&I	NNPC
Class	DNV
NAABSA	N/A
ITF	YES
A60 Bulkhead	YES
Grainfitted	YES
Dangerous goods fitted	YES

## TECHNICAL PARTICULARS

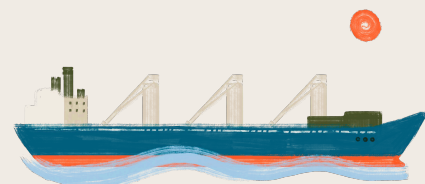
Main engine	ABC NV 8DZC-1000-166-A/1768kw
Speed loaded	10 KTS
Speed ballast	11 KTS
Consumption at sea	6.8 MT/DAY
Fuel type Main Engine	MGO
Fuel type Aux. Engine	MGO
Bowthruster fitted	YES, 350 KWT
Bunker capacity	453.30 CBM
Freshwater capacity	55.00 CBM
Ballastwater capacity	3273.40 CBM
Deballasting speed	225 CBM/HR
Lub oil capacity	ME 14,39 / AE 3,33 CBM
Batteries	GMDSS 2pcs; WHC 4pcs (12V)
Shorepower	400V; 50Hz; 120kW

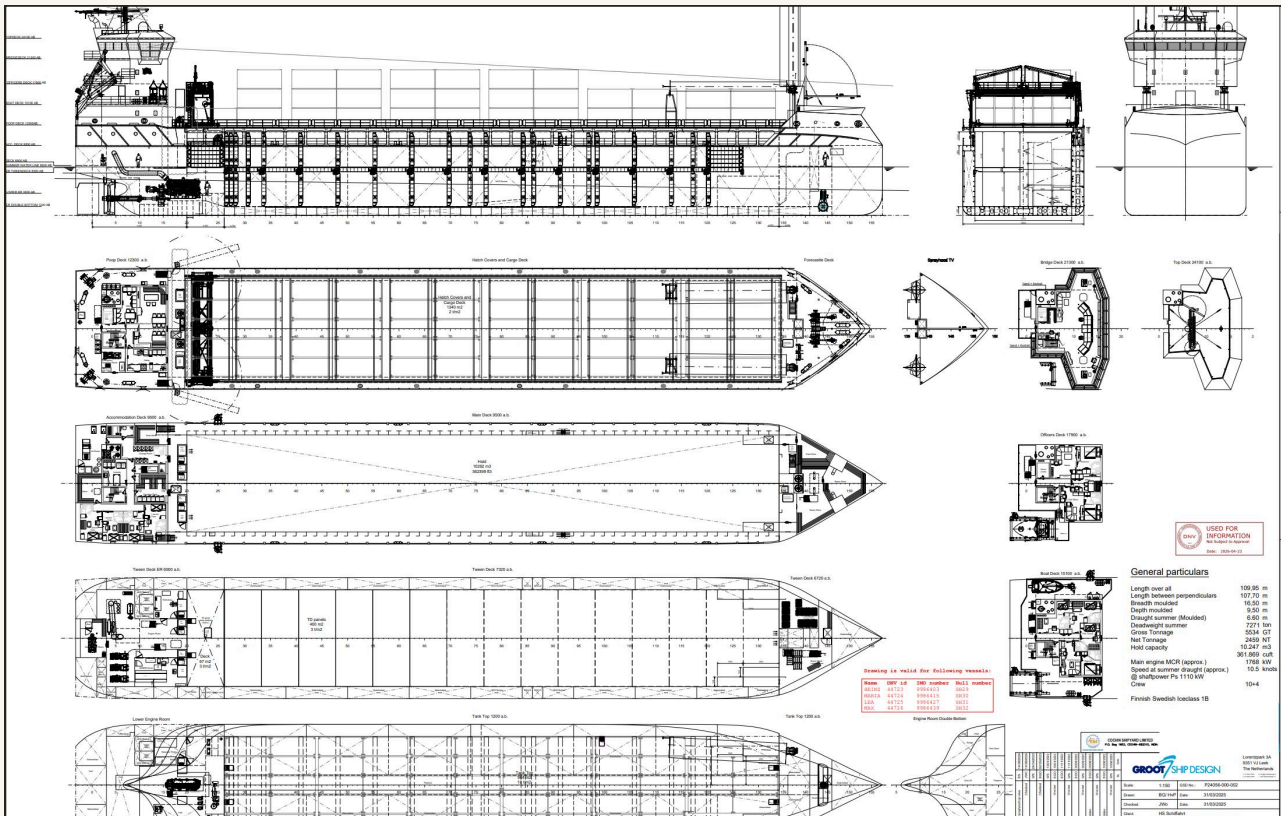
## VESSEL PARTICULARS

LOA	109.95 M
LBP	107.70 M
Beam	16.50 M
Depth Mid	9.50 M
Draft Summer	6.6 M
Draft Winter	6.5 M
Ballast draft	
GT	5.550
NT	2480
Displacement	9794.80 MT
Deadweight	7272 MT
DWCC Summer	6900 MT
DWCC Winter	6700 MT
Airdraft ballast/laden	30.4 M / 29.05 M
Distance WLTHC in full ballast	7.35 M
Immersion/TPC	17.13
Collapsible foremast	YES
Ventofoil	YES

## HOLD PARTICULARS

No. Of holds	1
Hold(s) capacity	10.207 CBM / 360.400 CBFT
Box shaped	YES
Length of hold/tweendeck	75.60 M / 80.70 M
Width of hold	13.20 M
Height of hold	10.15 M
Type of hatches	PONTOON
Hatch Dimension (LxW)	81 M X 13.50 M
Number of tweendecks	6
Number of bulkheads	3
Number of bulkheads position	21
Strongbeam	N/A
Cement holes	6 PCS/470MM
Tanktop/hatch cover strength	18 / 2 T/M2
Max steel coil weight	22,35 MT
Tweendeck strength	3 T/M2
Ventilation (air changes/h)	8430 CBM/HR
Vent. mechanical or electrical	ELECTRICAL
CO2 fitted	YES





## Navi Merchants A/S

📍 Pakhus 48, Klubiensvej 22, DK-2150 Nordhavn

✉ E: [chartering@navimerchants.com](mailto:chartering@navimerchants.com)

✉ E: [operations@navimerchants.com](mailto:operations@navimerchants.com)

🌐 Copenhagen, Denmark

☎ +45 3996 5320

🌐 [www.navimerchants.com](http://www.navimerchants.com)

