

Commonplace Robotics GmbH

Gewerbepark 9-11
Bissendorf

Phone: +495402 9689290
Fax : +495402 9689299
Email : support@cpr-robots.com
Internet : cpr-robots.com



Customer: igus GmbH
Spicher Str. 1a
Köln
+49 2203 9649 8255

www.igus.de



Project description: igus Robot Control
Customer order number:
Drawing number: 1.0
Order no.:
Project name: iRC-igusRobotControl48V
Plant type: Robot control
Location:
Responsible for the project: Alexander Mühlens
Parts feature:

The transfer and the reproduction of this document, the use and the communication of its content are not permitted unless expressly authorized!

Contraventions shall require compensation.

All rights reserved in the case of patent distribution or GM registration.

Created on: 29.04.21 Drawn by: J. Reitzer
Edited on:

Drawn by: 7

				Date	29.04.21	igus GmbH		Deckblatt	Project number		Unit	=	
				work	J. Reitzer	Spicher Str. 1a					Field	+	
				check	N. Sunderdiek	Köln					Drawing number		sheet
Status	rev.	Date	name	norm	DIN 81346	created for	Created by			1.0	of		1

1

2

3

4

5

6

7

8

9

A

color-coding - within the cabinet

L1,L2,L3

PE

NEUTRAL-CONDUCTOR

CONTROL-VOLTAGE 230VAC

CONTROL-VOLTAGE 0VAC

CONTROL-VOLTAGE 24VDC+

CONTROL-VOLTAGE GND

OTHER VOLTAGES (5V, 48V)

MEASUREMENT

EXTERNAL VOLTAGE

= BLACK

= GREEN / YELLOW

= LIGHT-BLUE

= RED

= RED / WHITE

= DARK-BLUE

= DARK-BLUE / WHITE

= PURPLE

= WHITE

= ORANGE

RAL 9005

RAL 6018/1021

RAL 5015

RAL 3000

RAL 3000 / 1013

RAL 5010

RAL 5010 / 1013

RAL 4000


RAL 1013

RAL 2003

Date

29.04.21

igus GmbH



Aderkennzeichnungen

Project number

Unit

=

work

J. Reitzer

Spicher Str. 1a

Field

+

check

N. Sunderdiek

Köln

Drawing number

sheet

1

Status

rev.

Date

name

norm

DIN 81346

created for

Created by

1.0

of

1

1

2

3

4

5

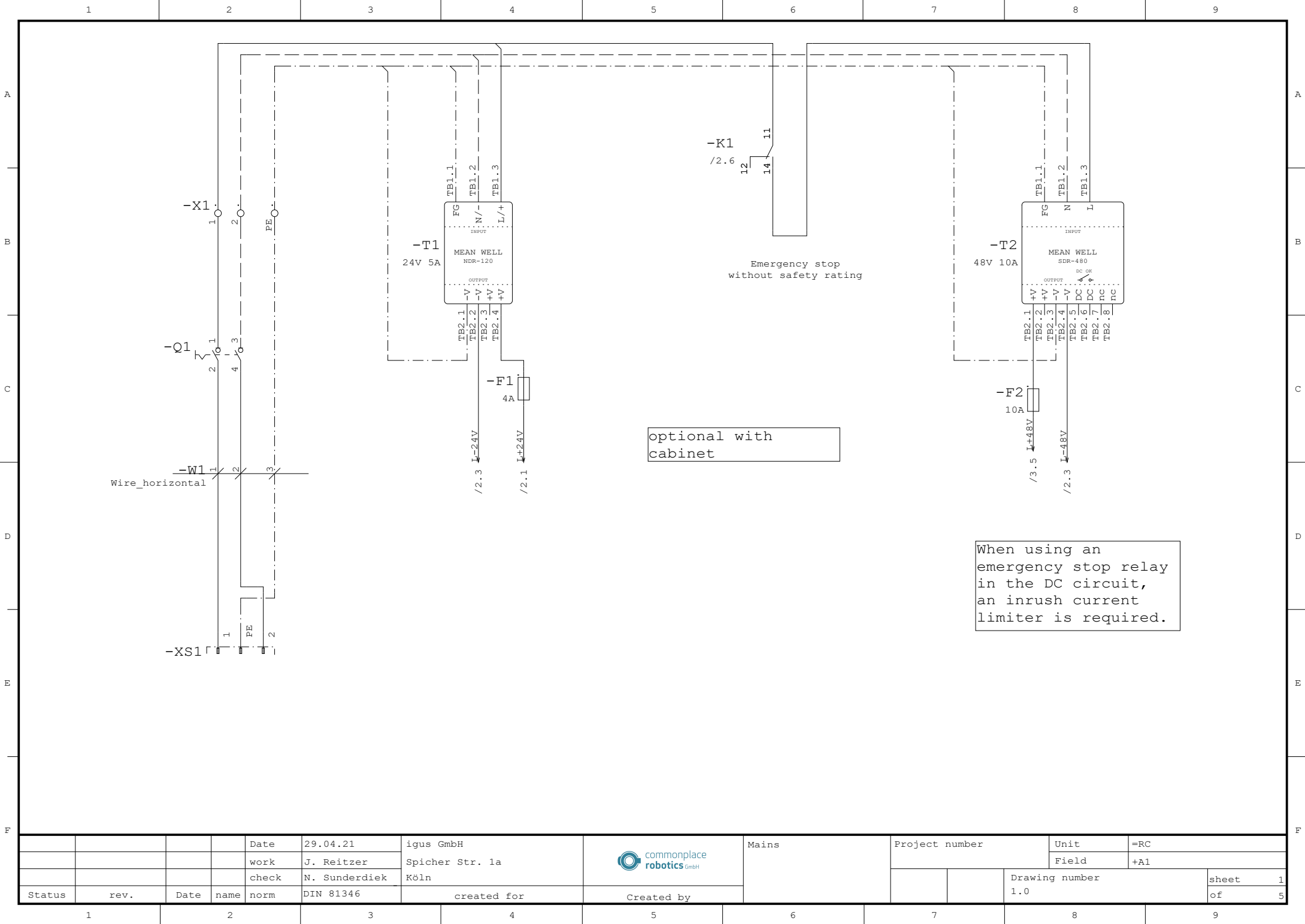
6

7

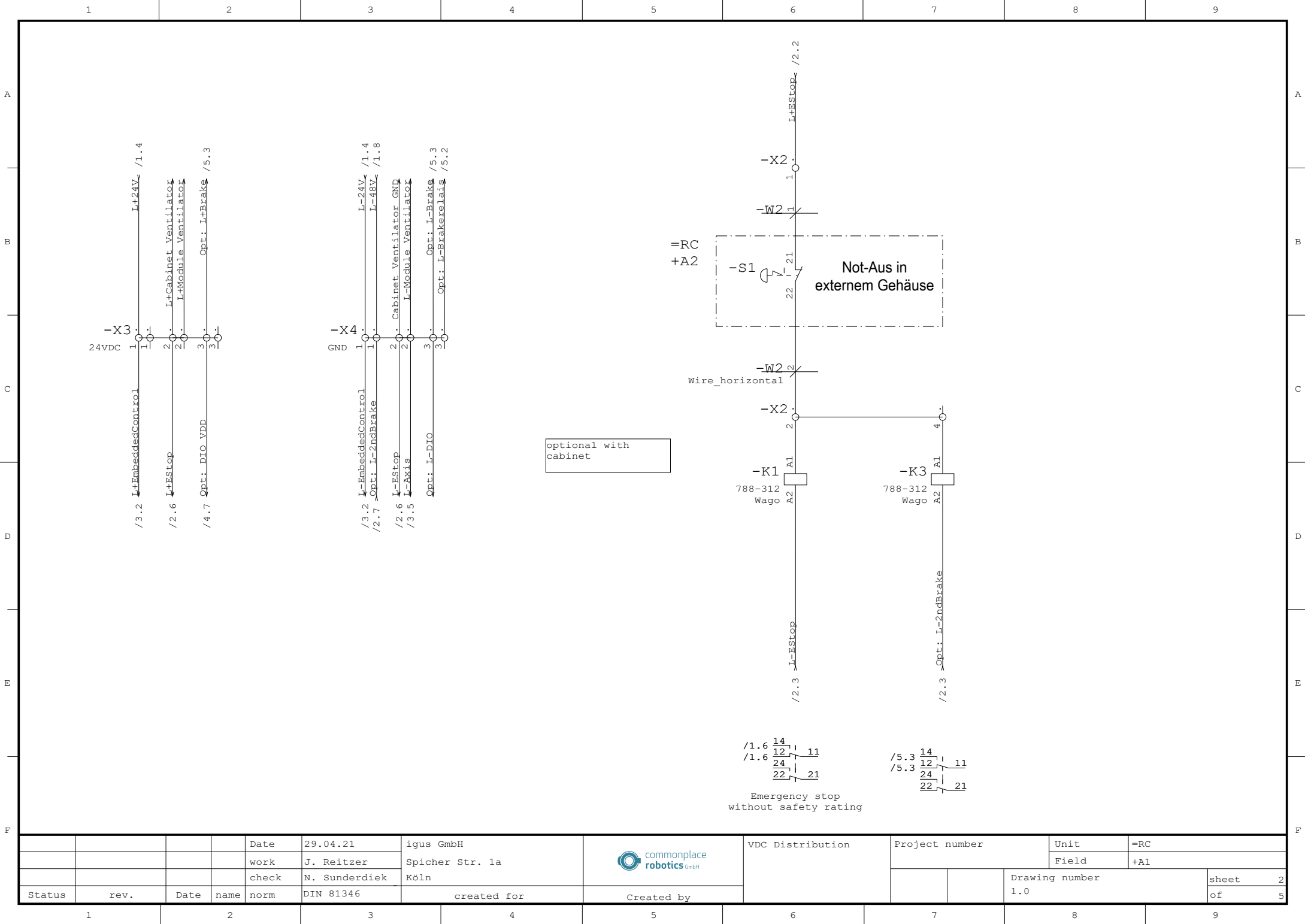
8

9

F



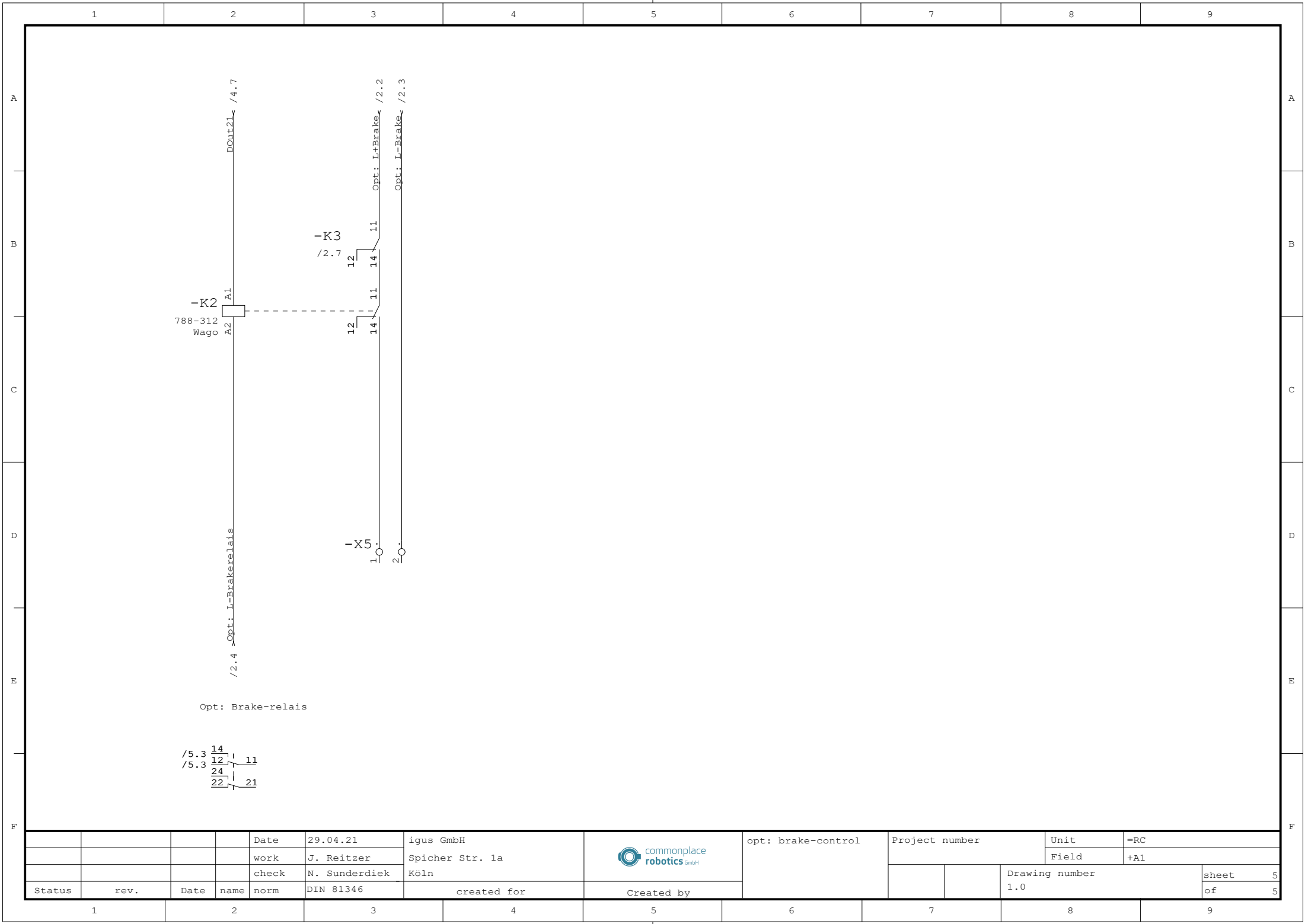
				Date	29.04.21	igus GmbH		Mains	Project number		Unit	=RC
				work	J. Reitzer	Spicher Str. 1a					Field	+A1
				check	N. Sunderdiek	Köln						
Status	rev.	Date	name	norm	DIN 81346	created for	Created by			Drawing number	sheet 1	
										1.0	of 5	



optional with cabinet

Not-Aus in externem Gehäuse

				Date	29.04.21	igus GmbH		VDC Distribution	Project number		Unit	=RC	
			work	J. Reitzer	Spicher Str. 1a	Field					+A1		
			check	N. Sunderdiek	Köln					Drawing number		sheet	2
Status	rev.	Date	name	norm	DIN 81346	created for	Created by				1.0	of 5	



				Date	29.04.21	igus GmbH		opt: brake-control	Project number		Unit	=RC	
				work	J. Reitzer	Spicher Str. 1a					Field	+A1	
				check	N. Sunderdiek	Köln					Drawing number	sheet 5	
Status	rev.	Date	name	norm	DIN 81346	created for	Created by			1.0	of 5		