



———— QUOTIENT - KINEMATICS - MACHINE ————

QKM Technology (Dong Guan) Co., Ltd

QKM B.V.

Contact

✉ mail@qkmtech.eu

📍 Stationstraat 79 unit 9
3811MH Amersfoort
The Netherlands

☎ +31 33 234 0878

🌐 www.qkmtech.com

Tobot FlexSorter Module

Easily handle thin sheets, irregular shapes, and silicon wafers with precision and efficiency. Perfect for small-batch or multi-product operations.



Scratch-Free Precision



Simplified Operation



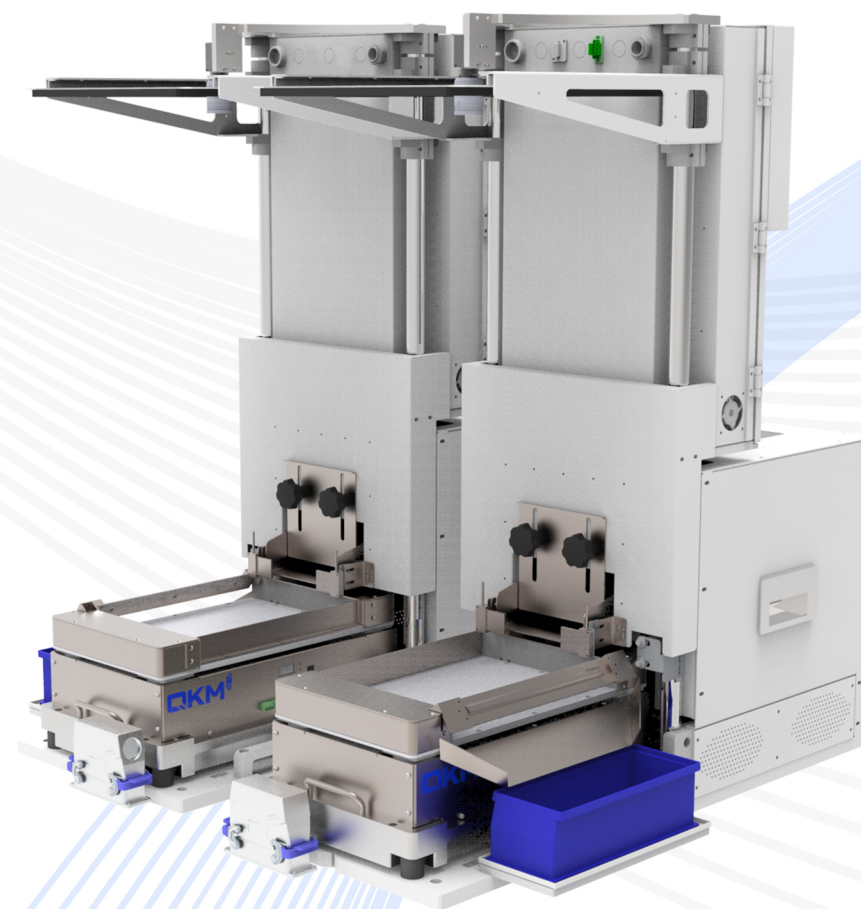
Quick Changeover



Plug & Play



Compact Design



Tobot FlexSorter Module

Your smart solution for fast, flexible and space-saving automation.

Easily handle thin sheets, irregular shapes, and silicon wafers with precision and efficiency. Perfect for small-batch or multi-product operations.

- Scratch-Free Precision: Gentle and accurate with vibration technology.
- Simplified Operation: Integrated control for seamless feeding and setup.
- Quick Changeovers: Switch production with just one click.
- Plug & Play: Easy to install and use right away.
- Compact Design: Save 41% space on your factory floor.



Specifications

		QFSM-0001K-3224	QFSM-0002K-3224	QFSM-0001K-3929	QFSM-0002K-3929	Notes
Applicable material size		2-60mm		20-120mm		
Vibration load capacity		1.5 kg				
Vibratory bowl inner area		320*240 mm		390*290 mm		
Bin capacity		8L		15L		
Work Efficiency*1	No bottom alignment camera	2.2-2.5 s/pcs	1.9-2.2 s/pcs	2.2-2.5 s/pcs	1.9-2.2 s/pcs	
	With bottom alignment camera	2.5-3 s/pcs	2.3-2.8 s/pcs	2.5-3 s/pcs	2.3-2.8 s/pcs	
Accuracy	No bottom alignment camera	±0.5 mm				
	With bottom alignment camera	±0.07 mm				
Compatible robot models *2		AH3-0400-0204-1700		AH6K-0600-0204-2000		
Equipment dimensions*3	No robot	950*400*1100 mm	950*904*1100 mm	1020*445*1150 mm	1110*1160*1150 mm	
	With robot	950*522*1100 mm	950*904*1100 mm	1020*670*1150 mm	1110*1160*1150 mm	
Control software		FlexSorter				
Standard external interfaces		AC power interface (x1), DC power interface (x1) Emergency stop interface (x1), Ethernet port (x1)				Refer to interface definition diagram
Display	Specification	Capacitive touch, 13.3 inches				
	Installation position*4	On the door of the electric control cabinet				
Input voltage	AC	230 V a.c 50/60 Hz 600 w		230 V a.c 50/60 Hz 1200 w		
	DC	24 V d.c 240 w	24 V d.c 480 w	24 V d.c 240 w	24 V d.c 480 w	
Weight		210 kg	400 kg	270 kg	540 kg	
Vision system		Top camera, 20 MP				
		Paired with top light source				

*1: This cycle time is for selection reference only. For specific workpiece cycle time evaluation, please contact technical support or sales personnel.

*2: If adapting to other robot models, the overall height might be increased.

*3: The above dimensions do not include the material collection box for the cleared materials.

*4: The monitor can be installed in other places according to your needs. Please consult local sales personnel for details

Control Cabinet

- Integrated design.
- User-friendly touchscreen.
- Easy maintenance with a standard network port.

Storage Bin

- Visible material level.
- Safety features to prevent errors.
- Adjustable size for flexibility.

Vision System

- High-resolution camera
- Adjustable height
- Precise detection

Flexible Feeder System

- Build-in cleaning mechanism
- Supports various part types
- Boosts efficiency

Base Design

- Sturdy and portable with wheels for easy transport.

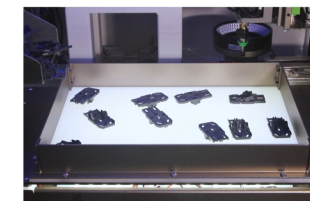
Connector

- Seamless connection to networks and other devices.

Applications



IC component sorting



Electrical appliance socket cover sorting



Product logo sorting



Medical consumables sorting



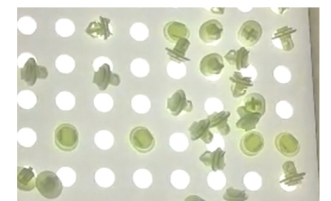
Thermal relay accessory housing assembly



Gas pipe nut sorting and assembly



Toy sorting



Automotive clip injection molding insert loading