

Number of axis	4-axis		Maximum speed	Moving range
Motion radius	300mm	J1 axis S	J1+J2 5950mm/s	$\pm 145^\circ$
Power capacity	1.5KVA	J2 axis L		$\pm 120^\circ$
Max payload	Rated 1KG/Max 4KG	J3 axis U	1200mm/s	150mm
Repeatability	$\pm 0.01\text{mm}$	J4 axis R	880°/s	$\pm 360^\circ$
Robot mass	15KG	Input/Output signals		Standard 16 in/16 out 24 VDC
Built-in air tube	$\Phi 6$	Mounting position		Floor



Installation Environment

Temperature	0-45°C	Humidity	20-80%RH(no condensing)	No corrosive or combustible gas, no water, no splashing	No excessive oil or dust
Vibrations	Below 4.9M/S2 (0.5G)	Altitude	Below 1000M	Away from electromagnetic source	Away from magnetic field

Control cabinet specifications

Overall dimension	420(width)*450(depth)*200(height)mm (with protrusions)
Approximate mass	18.5KG
Cooling method	Natural cooling
Power specifications	1PH 220V 50/60HZ
Grounding	Industrial grounding (dedicated grounding, resistance below 100Ω)
Input/Output signal	General signal: 16 input, 16 output
Position control method	Serial communication EtherCAT.TCP/IP
Memory capacity	JOB: 200000 steps, 10000 robot commands (total 200M)
LAN(Host link)	Ethercat(1pc) TCP/IP(1pc)
Control mode	Servo position control
Ambient temperature	In use: 0~ + 45°C, In storage: - 20~ + 60°C
Driver unit	AC servo system (6-axis)
Relative humidity	10%~90%(no condensing)
Vibrate	Below 0.5G

Serial port I/F	RS485(1pc) RS422(1pc) RS232(1pc) CAN(1pc) USB(1pc)
-----------------	--

Altitude	Below 1000m. Derate 1% for every additional 100m if over 1000m. Maximum 2000m.
----------	--

Others	No dust, cutting fluid (including coolant), organic solvent, oil smoke, water, salt, medicine, anti-rust oil, strong microwave, ultraviolet light, X-ray, radiation exposure
--------	--

Teach pendent specifications

External dimensions	280(width)*220(depth)*120(height)mm (with protrusions)
Gross weight	0.6KG
Material	Reinforced plastics
Display	8 inch color LED, 640*480 pixels
Protection class	IP54
Cable Length	Standard 6m. Optional: 8m, 10m, 15m

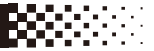
Manipulator	Selector, axis operation, value, mode selection with key (teach mode/auto mode/remote mode), emergency stop, enable, USB port etc
-------------	---



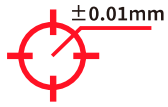
Please read the user manual and relevant documentations before use.
 Contact official staff or distributor of YASAKA if there are any errors, faults or if the robot is a harm to human safety.
 All data, drawings and specifications provided in this catalog are purely for information purposes and do not constitute a guarantee of these characteristics. The extent of goods delivered and services performed is determined by the subject matter of the specific contract. No liability accepted for errors or omissions.

SPECIFICATIONS

TECHNICAL SPECIFICATION



Max payload



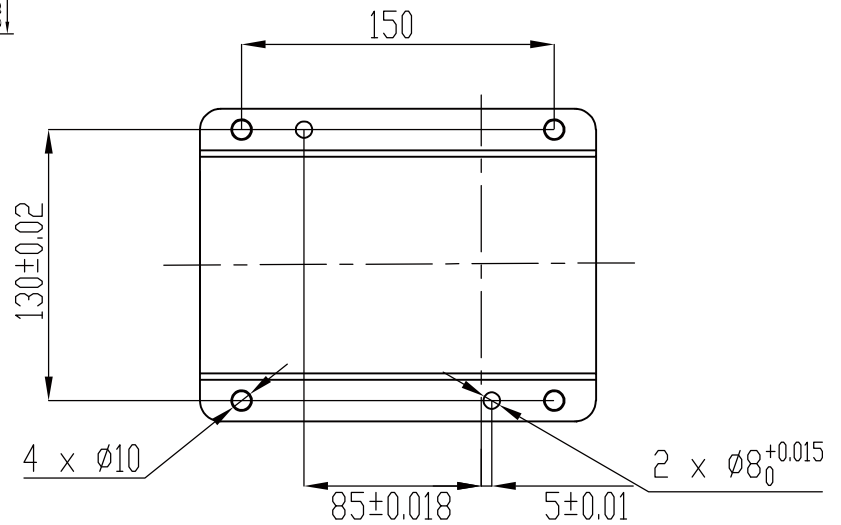
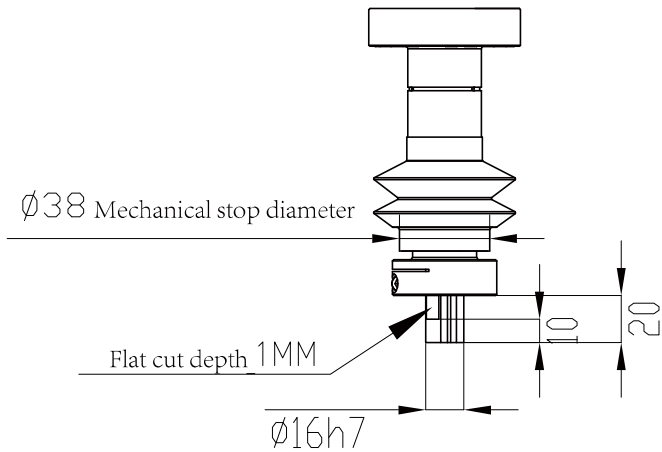
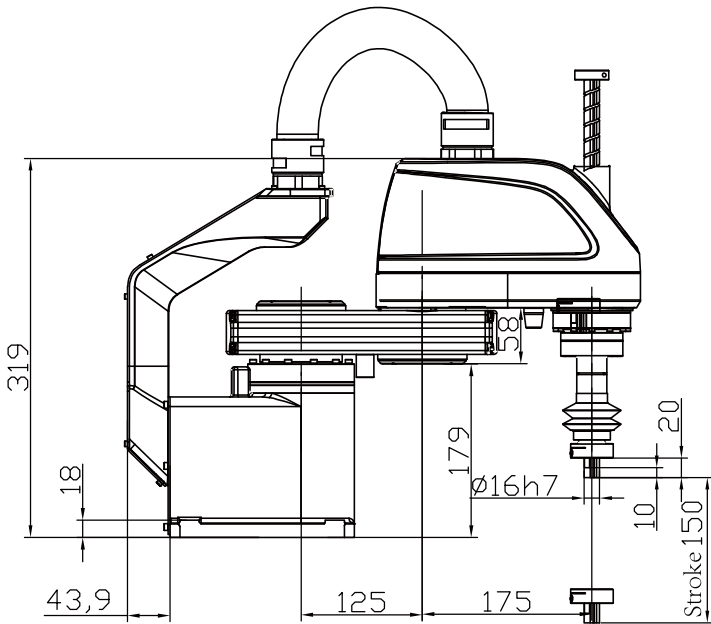
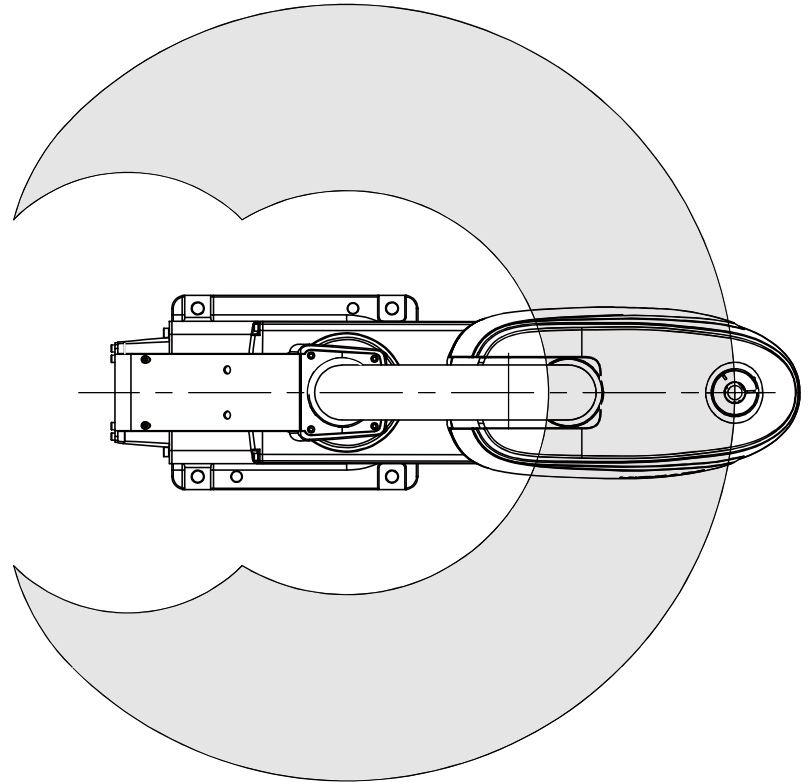
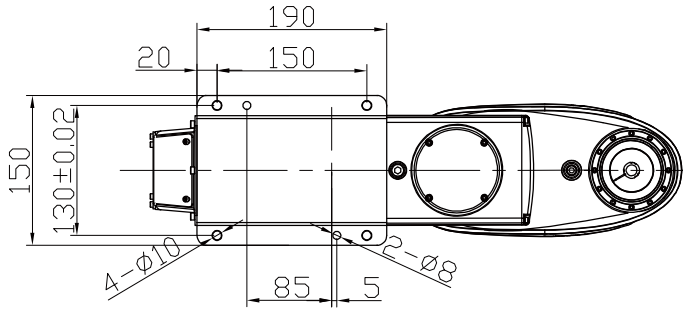
Repeatability



Moving range

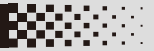
External dimensions and moving range 

P moving range 



End flange installation dimensions 

Base installation dimensions 



Number of axis	4-axis		Maximum speed	Moving range
Motion radius	400mm	J1 axis S	J1+J2 7200mm/s	$\pm 145^\circ$
Power capacity	1.5KVA	J2 axis L		$\pm 145^\circ$
Max payload	Rated 1KG/Max 4KG	J3 axis U	1200mm/s	150mm
Repeatability	$\pm 0.01\text{mm}$	J4 axis R	880°/s	$\pm 360^\circ$
Robot mass	15.5KG	Input/Output signals		Standard 16 in/16 out 24 VDC
Built-in air tube	$\Phi 6$	Mounting position		Floor



Installation Environment

Temperature	0-45°C	Humidity	20~80%RH(no condensing)	No corrosive or combustible gas, no water, no splashing	No excessive oil or dust
Vibrations	Below 4.9M/S2 (0.5G)	Altitude	Below 1000M	Away from electromagnetic source	Away from magnetic field

Control cabinet specifications

Overall dimension	420(width)*450(depth)*200(height)mm (with protrusions)
Approximate mass	18.5KG
Cooling method	Natural cooling
Power specifications	1PH 220V 50/60HZ
Grounding	Industrial grounding (dedicated grounding, resistance below 100Ω)
Input/Output signal	General signal: 16 input, 16 output
Position control method	Serial communication EtherCAT.TCP/IP
Memory capacity	JOB: 200000 steps, 10000 robot commands (total 200M)
LAN(Host link)	Ethercat(1pc) TCP/IP(1pc)
Control mode	Servo position control
Ambient temperature	In use: 0~ + 45°C, In storage: - 20~ + 60°C
Driver unit	AC servo system (6-axis)
Relative humidity	10%~90%(no condensing)
Vibrate	Below 0.5G

Serial port I/F

RS485(1pc) RS422(1pc) RS232(1pc) CAN(1pc) USB(1pc)

Altitude

Below 1000m. Derate 1% for every additional 100m if over 1000m. Maximum 2000m.

Others

No dust, cutting fluid (including coolant), organic solvent, oil smoke, water, salt, medicine, anti-rust oil, strong microwave, ultraviolet light, X-ray, radiation exposure

Teach pendant specifications

External dimensions	280(width)*220(depth)*120(height)mm (with protrusions)
Gross weight	0.6KG
Material	Reinforced plastics
Display	8 inch color LED, 640*480 pixels
Protection class	IP54
Cable Length	Standard 6m. Optional: 8m, 10m, 15m

Manipulator

Selector, axis operation, value, mode selection with key (teach mode/auto mode/remote mode), emergency stop, enable, USB port etc


ATTENTION

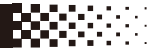
Please read the user manual and relevant documentations before use.

Contact official staff or distributor of YASAKA if there are any errors, faults or if the robot is a harm to human safety.

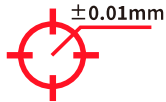
All data, drawings and specifications provided in this catalog are purely for information purposes and do not constitute a guarantee of these characteristics. The extent of goods delivered and services performed is determined by the subject matter of the specific contract. No liability accepted for errors or omissions.

SPECIFICATIONS

TECHNICAL SPECIFICATION



4KG
Max payload



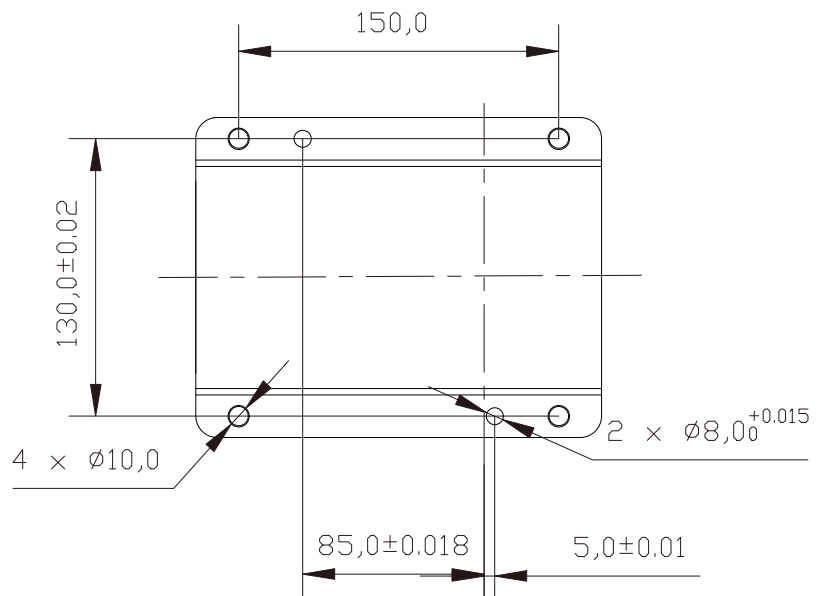
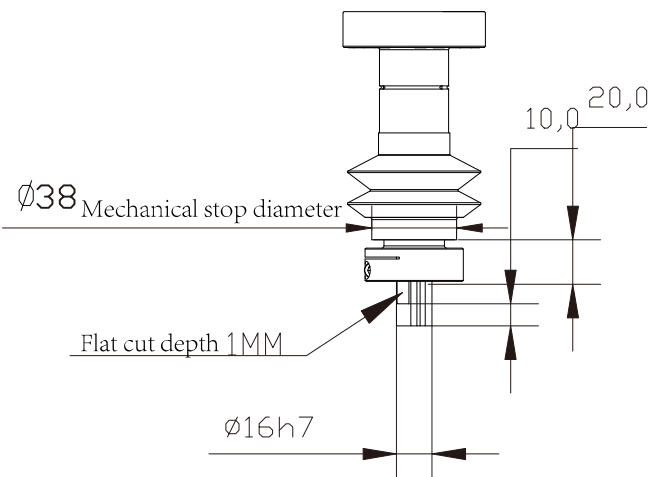
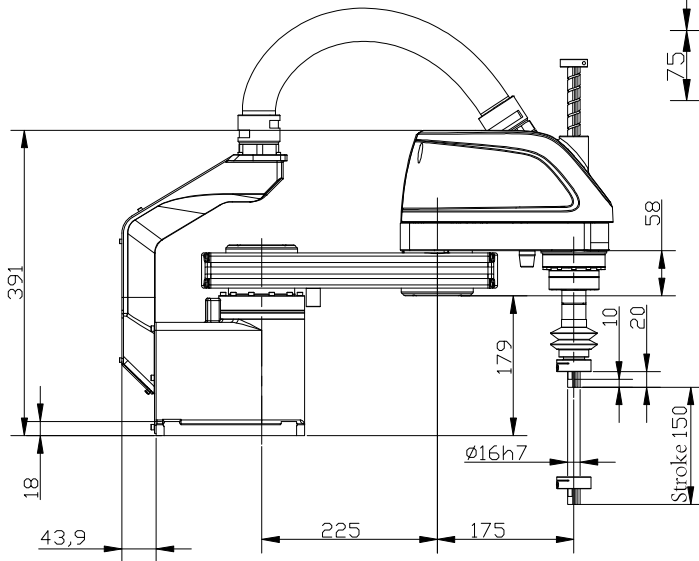
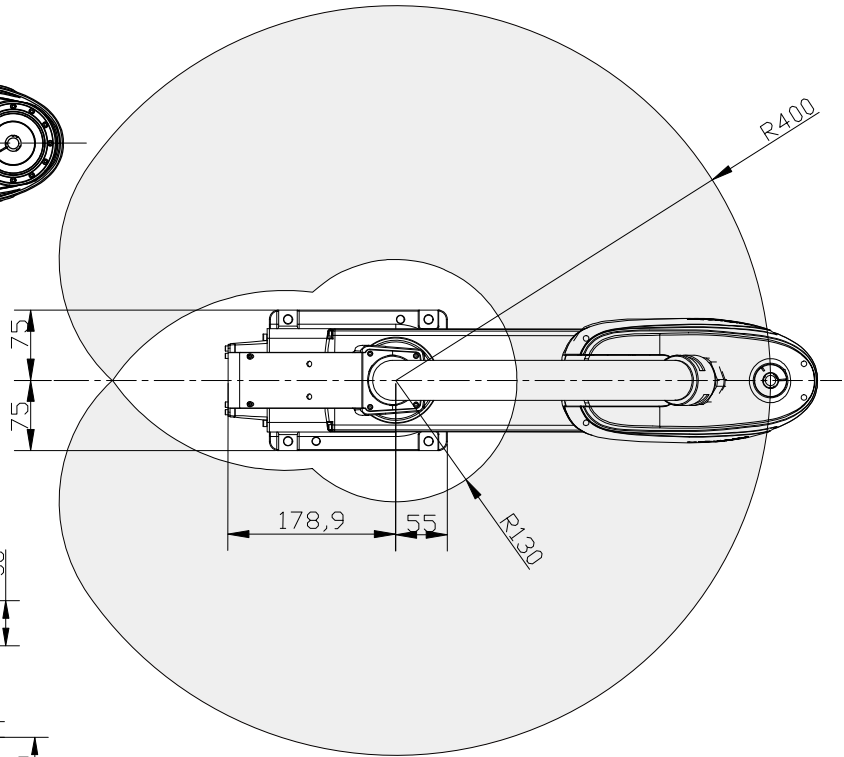
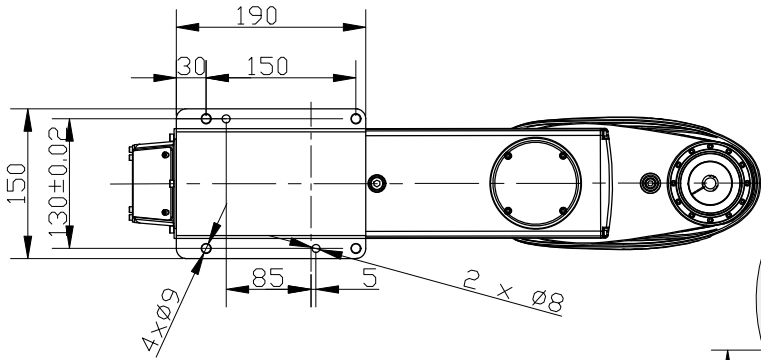
$\pm 0.01\text{mm}$
Repeatability



400mm
Moving range

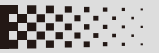
External dimensions and moving range 

P moving range 

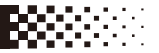


End flange installation dimensions 

Base installation dimensions 



Number of axis	4-axis		Maximum speed	Moving range
Motion radius	500mm	J1 axis S	J1+J2	$\pm 135^\circ$
Power capacity	2.0KVA	J2 axis L	7380mm/s	$\pm 145^\circ$
Max payload	Rated 5KG/Max 10KG	J3 axis U	1100mm/s	200mm
Repeatability	$\pm 0.02\text{mm}$	J4 axis R	880°/s	$\pm 360^\circ$
Robot mass	24KG	Input/Output signals		Standard 16 in/16 out 24 VDC
Built-in air tube	$\Phi 6$	Mounting position		Floor



Installation Environment

Temperature	0-45°C	Humidity	20~80%RH(no condensing)	No corrosive or combustible gas, no water, no splashing	No excessive oil or dust
Vibrations	Below 4.9M/S2 (0.5G)	Altitude	Below 1000M	Away from electromagnetic source	Away from magnetic field

Control cabinet specifications

Overall dimension	420(width)*450(depth)*200(height)mm (with protrusions)
Approximate mass	18.5KG
Cooling method	Natural cooling
Power specifications	1PH 220V 50/60HZ
Grounding	Industrial grounding (dedicated grounding, resistance below 100Ω)
Input/Output signal	General signal: 16 input, 16 output
Position control method	Serial communication EtherCAT.TCP/IP
Memory capacity	JOB: 200000 steps, 10000 robot commands (total 200M)
LAN(Host link)	Ethercat(1pc) TCP/IP(1pc)
Control mode	Servo position control
Ambient temperature	In use: 0~ + 45°C, In storage: - 20~ + 60°C
Driver unit	AC servo system (6-axis)
Relative humidity	10%~90%(no condensing)
Vibrate	Below 0.5G

Serial port I/F	RS485(1pc) RS422(1pc) RS232(1pc) CAN(1pc) USB(1pc)
-----------------	--

Altitude	Below 1000m. Derate 1% for every additional 100m if over 1000m. Maximum 2000m.
----------	--

Others	No dust, cutting fluid (including coolant), organic solvent, oil smoke, water, salt, medicine, anti-rust oil, strong microwave, ultraviolet light, X-ray, radiation exposure
--------	--

Teach pendent specifications

External dimensions	280(width)*220(depth)*120(height)mm (with protrusions)
Gross weight	0.6KG
Material	Reinforced plastics
Display	8 inch color LED, 640*480 pixels
Protection class	IP54
Cable Length	Standard 6m. Optional: 8m, 10m, 15m

Manipulator	Selector, axis operation, value, mode selection with key (teach mode/auto mode/remote mode), emergency stop, enable, USB port etc
-------------	---


ATTENTION

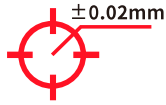
Please read the user manual and relevant documentations before use.
 Contact official staff or distributor of YASAKA if there are any errors, faults or if the robot is a harm to human safety.
 All data, drawings and specifications provided in this catalog are purely for information purposes and do not constitute a guarantee of these characteristics. The extent of goods delivered and services performed is determined by the subject matter of the specific contract. No liability accepted for errors or omissions.

SPECIFICATIONS

TECHNICAL SPECIFICATION



Max payload



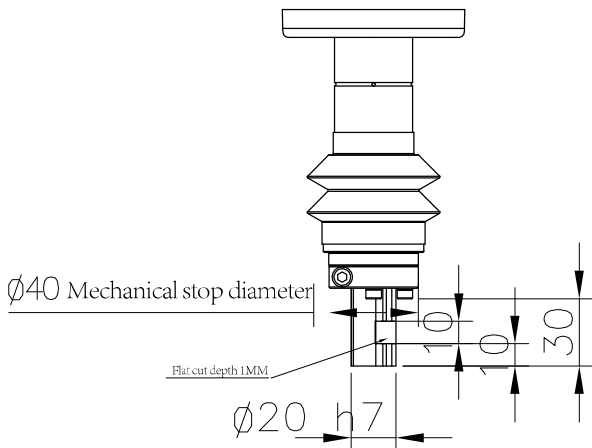
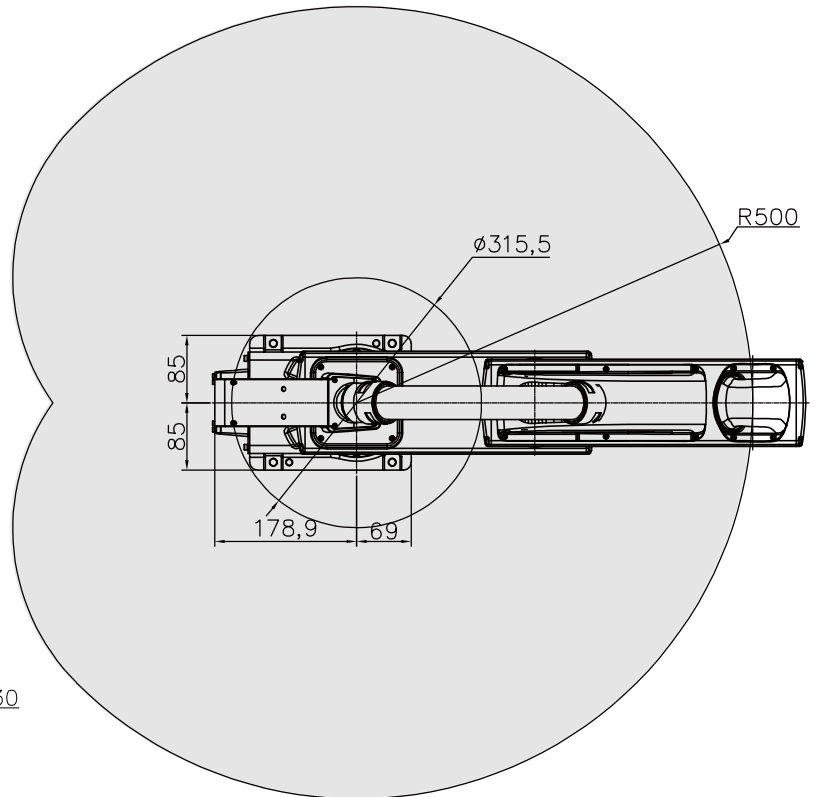
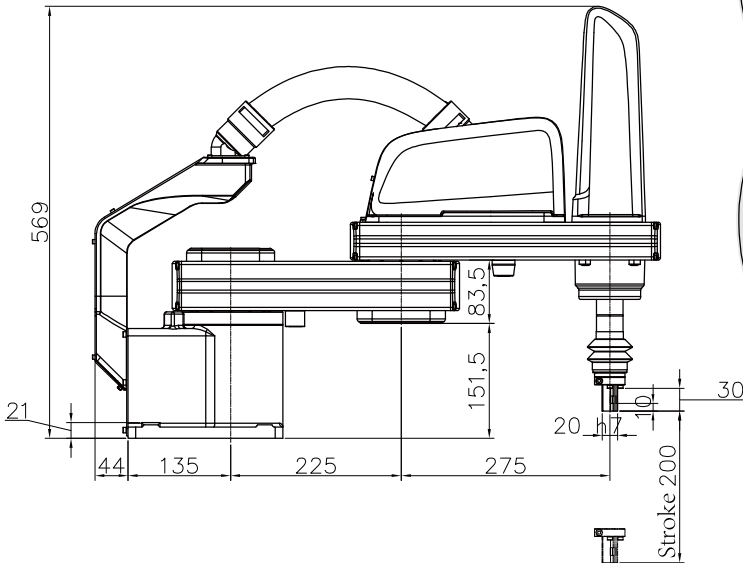
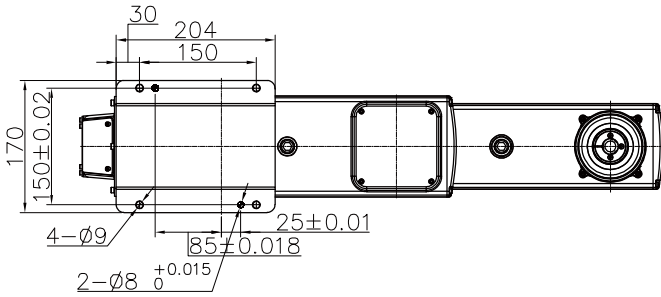
Repeatability



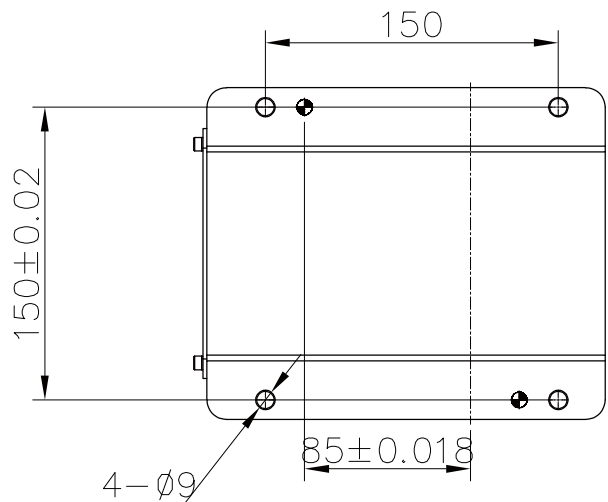
Moving range

External dimensions and moving range 

P moving range 



End flange installation dimensions 



Base installation dimensions 

YS10SC-600

PAYLOAD:5-10KG REPEATABILITY : $\pm 0.02\text{mm}$



Number of axis	4-axis	Maximum speed	Moving range
Motion radius	600mm	J1 axis S	$\pm 135^\circ$
Power capacity	2.0KVA	J1+J2	8100mm/s
Max payload	Rated 5KG/Max 10KG	J2 axis L	$\pm 150^\circ$
Repeatability	$\pm 0.02\text{mm}$	J3 axis U	1100mm/s
Robot mass	28KG	J4 axis R	200mm
Built-in air tube	$\Phi 6$	Input/Output signals	Standard 16 in/16 out 24 VDC
		Mounting position	Floor



Installation Environment

Temperature	0-45°C	Humidity	20-80%RH(no condensing)	No corrosive or combustible gas, no water, no splashing	No excessive oil or dust
Vibrations	Below 4.9M/S2 (0.5G)	Altitude	Below 1000M	Away from electromagnetic source	Away from magnetic field

Control cabinet specifications

Overall dimension	420(width)*450(depth)*200(height)mm (with protrusions)
Approximate mass	18.5KG
Cooling method	Natural cooling
Power specifications	1PH 220V 50/60HZ
Grounding	Industrial grounding (dedicated grounding, resistance below100Ω)
Input/Output signal	General signal:16 input,16 output
Position control method	Serial communication EtherCAT.TCP/IP
Memory capacity	JOB: 200000 steps,10000 robot commands (total 200M)
LAN(Host link)	Ethercat(1pc) TCP/IP(1pc)
Control mode	Servo position control
Ambient temperature	In use:0~ + 45°C,In storage: - 20~ + 60°C
Driver unit	AC servo system (6-axis)
Relative humidity	10%~90%(no condensing)
Vibrate	Below 0.5G

Serial port I/F	RS485(1pc) RS422(1pc) RS232(1pc) CAN(1pc) USB(1pc)
-----------------	--

Altitude	Below 1000m. Derate 1% for every additional 100m if over 1000m. Maximum 2000m.
----------	--

Others	No dust, cutting fluid (including coolant), organic solvent, oil smoke, water, salt, medicine, anti-rust oil, strong microwave, ultraviolet light, X-ray, radiation exposure
--------	--

Teach pendent specifications

External dimensions	280(width)*220(depth)*120(height)mm (with protrusions)
Gross weight	0.6KG
Material	Reinforced plastics
Display	8 inch color LED,640*480 pixels
Protection class	IP54
Cable Length	Standard 6m. Optional: 8m, 10m, 15m

Manipulator	Selector, axis operation, value, mode selection with key (teach mode/auto mode/remote mode), emergency stop, enable, USB port etc
-------------	---



ATTENTION

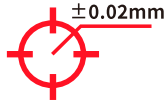
Please read the user manual and relevant documentations before use.
 Contact official staff or distributor of YASAKA if there are any errors, faults or if the robot is a harm to human safety.
 All data, drawings and specifications provided in this catalog are purely for information purposes and do not constitute a guarantee of these characteristics. The extent of goods delivered and services performed is determined by the subject matter of the specific contract. No liability accepted for errors or omissions.

SPECIFICATIONS

TECHNICAL SPECIFICATION



Max payload



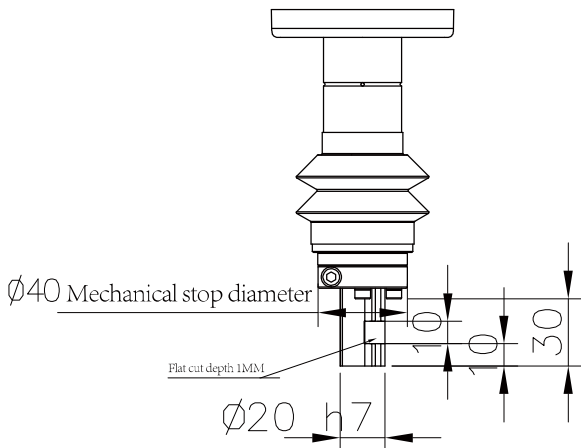
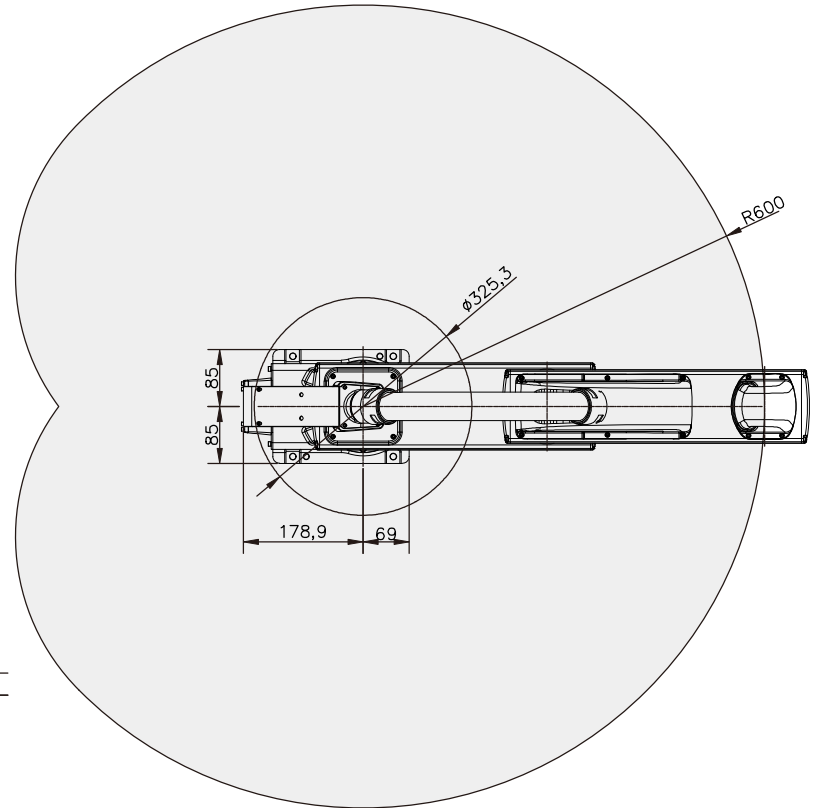
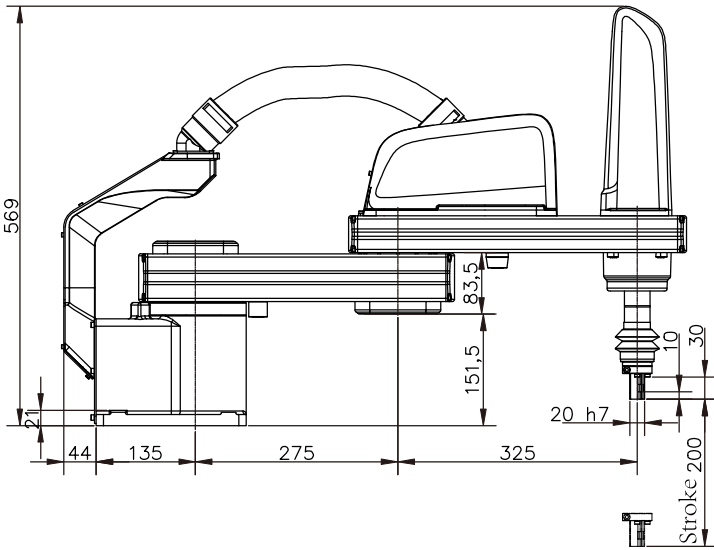
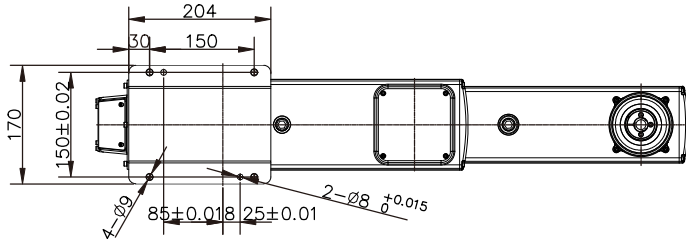
Repeatability



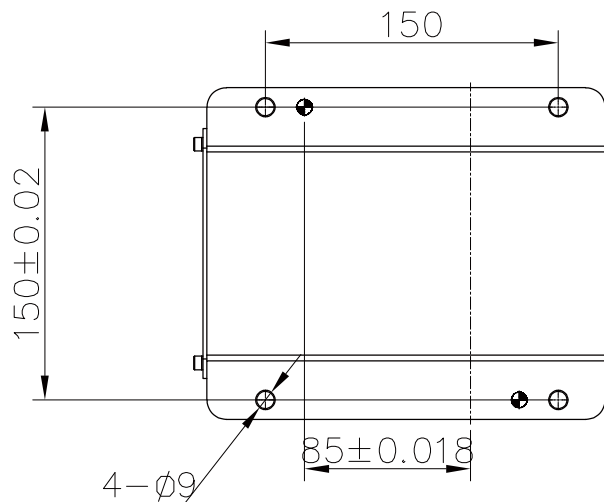
Moving range

External dimensions and moving range ◀

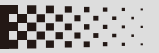
P moving range ◀



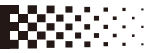
End flange installation dimensions ◀



Base installation dimensions ◀



Number of axis	4-axis		Maximum speed	Moving range
Motion radius	700mm	J1 axis S	J1+J2	$\pm 135^\circ$
Power capacity	2.0KVA	J2 axis L	9580mm/s	$\pm 150^\circ$
Max payload	Rated 5KG/Max 10KG	J3 axis U	1100mm/s	200mm
Repeatability	$\pm 0.02\text{mm}$	J4 axis R	880°/s	$\pm 360^\circ$
Robot mass	29KG	Input/Output signals		Standard 16 in/16 out 24 VDC
Built-in air tube	$\Phi 6$	Mounting position		Floor



Installation Environment

Temperature	0-45°C	Humidity	20-80%RH(no condensing)	No corrosive or combustible gas, no water, no splashing	No excessive oil or dust
Vibrations	Below 4.9M/S2 (0.5G)	Altitude	Below 1000M	Away from electromagnetic source	Away from magnetic field

Control cabinet specifications

Overall dimension	420(width)*450(depth)*200(height)mm (with protrusions)
Approximate mass	18.5KG
Cooling method	Natural cooling
Power specifications	1PH 220V 50/60HZ
Grounding	Industrial grounding (dedicated grounding, resistance below100Ω)
Input/Output signal	General signal:16 input,16 output
Position control method	Serial communication EtherCAT.TCP/IP
Memory capacity	JOB: 200000 steps,10000 robot commands (total 200M)
LAN(Host link)	Ethercat(1pc) TCP/IP(1pc)
Control mode	Servo position control
Ambient temperature	In use:0~ + 45°C,In storage: - 20~ + 60°C
Driver unit	AC servo system (6-axis)
Relative humidity	10%~90%(no condensing)
Vibrate	Below 0.5G

Serial port I/F	RS485(1pc) RS422(1pc) RS232(1pc) CAN(1pc) USB(1pc)
-----------------	--

Altitude	Below 1000m. Derate 1% for every additional 100m if over 1000m. Maximum 2000m.
----------	--

Others	No dust, cutting fluid (including coolant), organic solvent, oil smoke, water, salt, medicine, anti-rust oil, strong microwave, ultraviolet light, X-ray, radiation exposure
--------	--

Teach pendent specifications

External dimensions	280(width)*220(depth)*120(height)mm (with protrusions)
Gross weight	0.6KG
Material	Reinforced plastics
Display	8 inch color LED,640*480 pixels
Protection class	IP54
Cable Length	Standard 6m. Optional: 8m, 10m, 15m

Manipulator	Selector, axis operation, value, mode selection with key (teach mode/auto mode/remote mode), emergency stop, enable, USB port etc
-------------	---



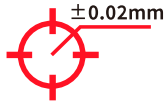
Please read the user manual and relevant documentations before use.
 Contact official staff or distributor of YASAKA if there are any errors, faults or if the robot is a harm to human safety.
 All data, drawings and specifications provided in this catalog are purely for information purposes and do not constitute a guarantee of these characteristics. The extent of goods delivered and services performed is determined by the subject matter of the specific contract. No liability accepted for errors or omissions.

SPECIFICATIONS

TECHNICAL SPECIFICATION



Max payload



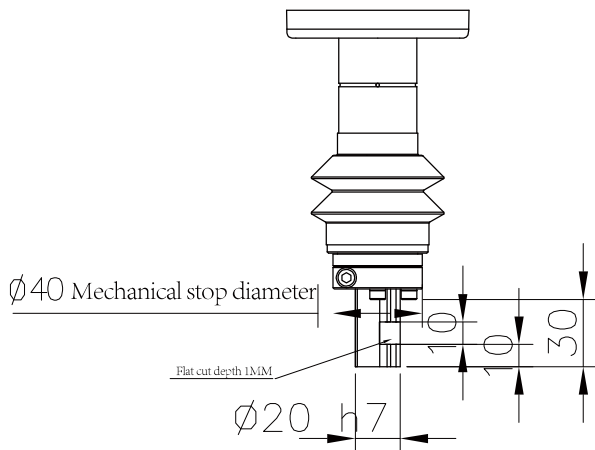
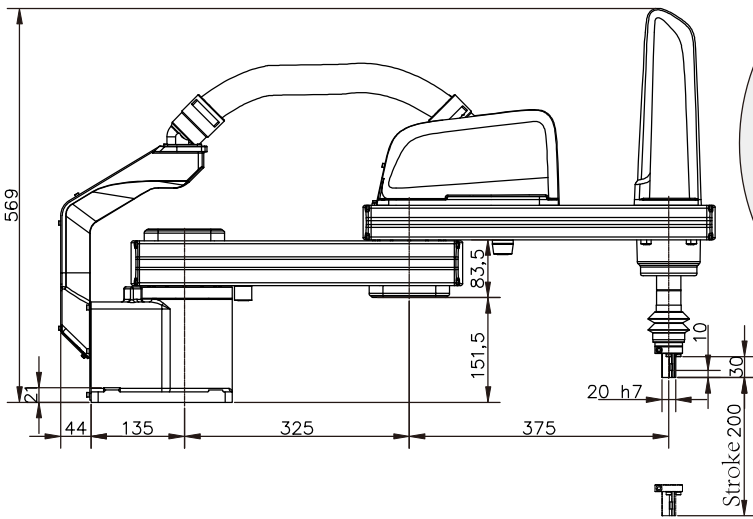
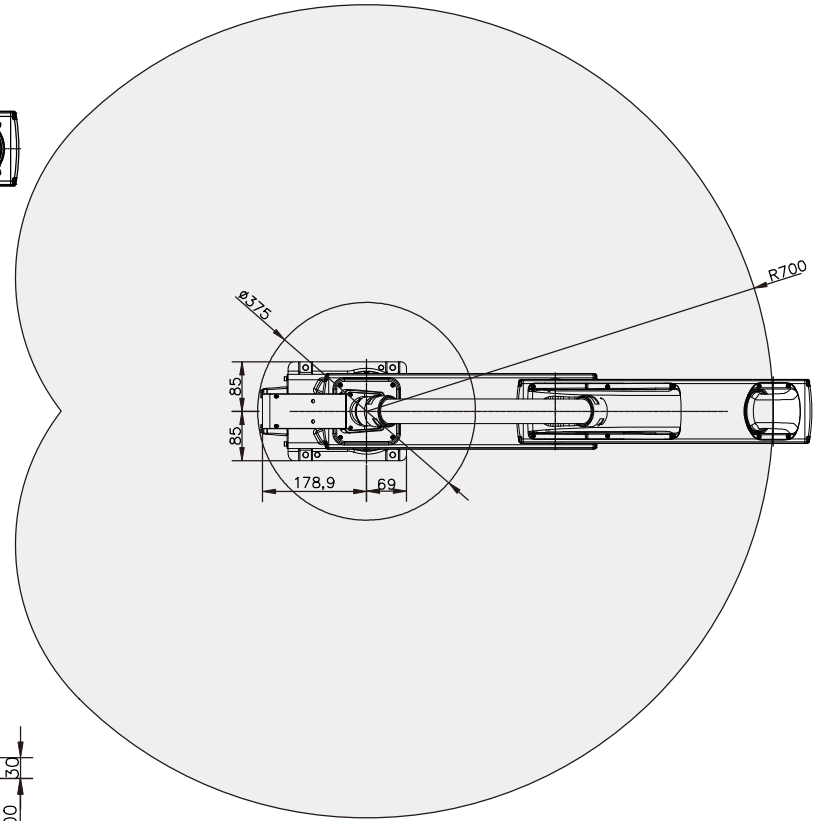
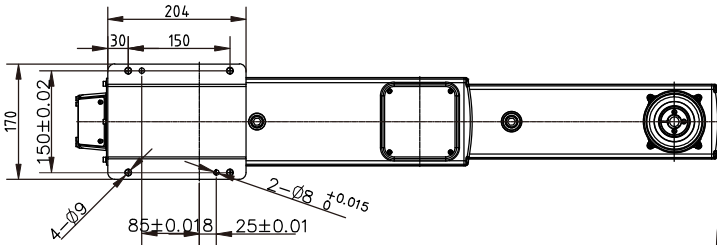
Repeatability



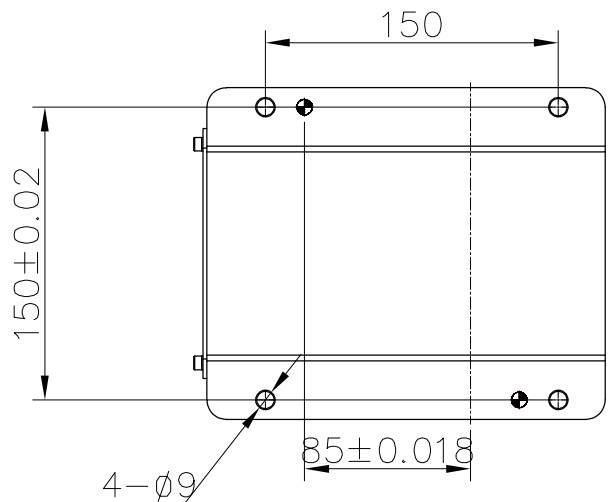
Moving range

External dimensions and moving range 

P moving range 



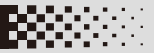
End flange installation dimensions 



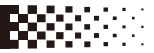
Base installation dimensions 

YS25SC-800

PAYLOAD : 10-25KG REPEATABILITY : $\pm 0.025\text{mm}$



Number of axis	4-axis		Maximum speed	Moving range
Motion radius	800mm	J1 axis S	J1+J2	$\pm 135^\circ$
Power capacity	3.0KVA	J2 axis L	9210mm/s	$\pm 150^\circ$
Max payload	Rated 10KG/Max 25KG	J3 axis U	2020mm/s	420mm
Repeatability	$\pm 0.025\text{mm}$	J4 axis R	720°/s	$\pm 360^\circ$
Robot mass	63KG	Input/Output signals		Standard 16 in/16 out 24 VDC
Built-in air tube	$\phi 8$	Mounting position		Floor



Installation Environment

Temperature	0-45°C	Humidity	20-80%RH(no condensing)	No corrosive or combustible gas, no water, no splashing	No excessive oil or dust
Vibrations	Below 4.9M/S2 (0.5G)	Altitude	Below 1000M	Away from electromagnetic source	Away from magnetic field

Control cabinet specifications

Overall dimension	420(width)*450(depth)*200(height)mm (with protrusions)
Approximate mass	18.5KG
Cooling method	Natural cooling
Power specifications	1PH 220V 50/60HZ
Grounding	Industrial grounding (dedicated grounding,resistance below100Ω)
Input/Output signal	General signal:16 input,16 output
Position control method	Serial communication EtherCAT.TCP/IP
Memory capacity	JOB: 200000 steps,10000 robot commands (total 200M)
LAN(Host link)	Ethercat(1pc) TCP/IP(1pc)
Control mode	Servo position control
Ambient temperature	In use:0~ + 45°C,In storage: - 20~ + 60°C
Driver unit	AC servo system (6-axis)
Relative humidity	10%~90%(no condensing)
Vibrate	Below 0.5G

Serial port I/F	RS485(1pc) RS422(1pc) RS232(1pc) CAN(1pc) USB(1pc)
-----------------	--

Altitude	Below 1000m. Derate 1% for every additional 100m if over 1000m. Maximum 2000m.
----------	--

Others	No dust, cutting fluid (including coolant), organic solvent, oil smoke, water, salt, medicine, anti-rust oil, strong microwave, ultraviolet light, X-ray, radiation exposure
--------	--

Teach pendent specifications

External dimensions	280(width)*220(depth)*120(height)mm (with protrusions)
Gross weight	0.6KG
Material	Reinforced plastics
Display	8 inch color LED,640*480 pixels
Protection class	IP54
Cable Length	Standard 6m. Optional: 8m, 10m, 15m

Manipulator	Selector, axis operation, value, mode selection with key (teach mode/auto mode/remote mode), emergency stop, enable, USB port etc
-------------	---



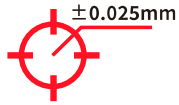
Please read the user manual and relevant documentations before use.
 Contact official staff or distributor of YASAKA if there are any errors, faults or if the robot is a harm to human safety.
 All data, drawings and specifications provided in this catalog are purely for information purposes and do not constitute a guarantee of these characteristics. The extent of goods delivered and services performed is determined by the subject matter of the specific contract. No liability accepted for errors or omissions.

SPECIFICATIONS

TECHNICAL SPECIFICATION



25KG
Max payload



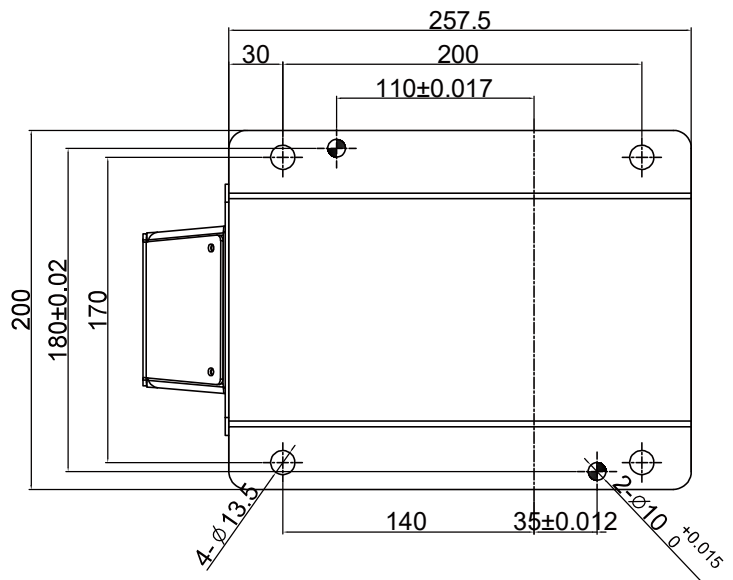
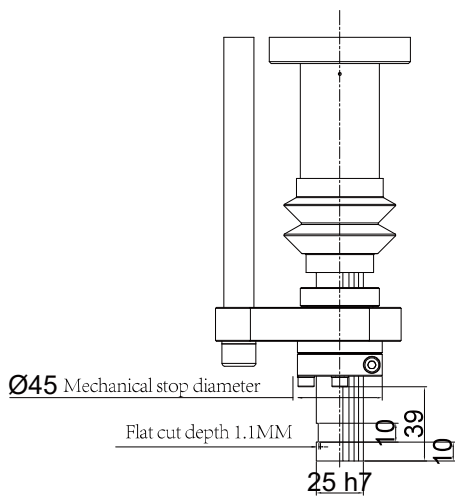
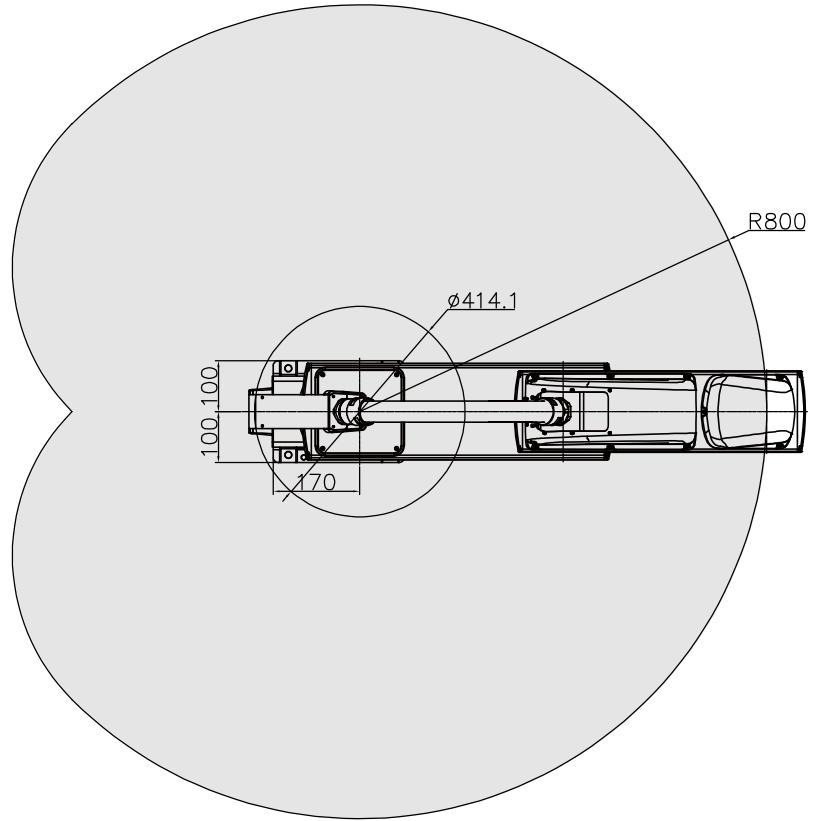
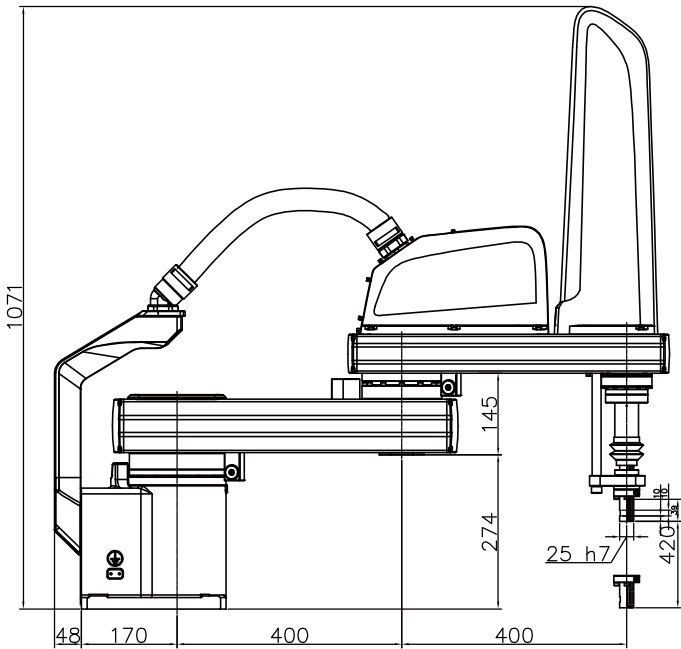
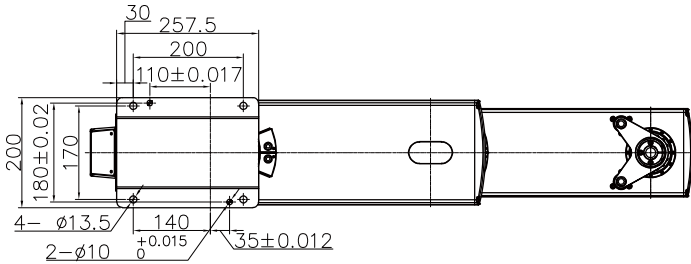
±0.025mm
Repeatability



800mm
Moving range

External dimensions and moving range

P moving range



End flange installation dimensions

Base installation dimensions

YS25SC-900

PAYLOAD : 10-25KG REPEATABILITY : $\pm 0.025\text{mm}$



Number of axis	4-axis		Maximum speed	Moving range
Motion radius	900mm	J1 axis S	J1+J2	$\pm 135^\circ$
Power capacity	3.0KVA	J2 axis L	10360mm/s	$\pm 150^\circ$
Max payload	Rated 10KG/Max 25KG	J3 axis U	2020mm/s	420mm
Repeatability	$\pm 0.025\text{mm}$	J4 axis R	720°/s	$\pm 360^\circ$
Robot mass	64.5KG	Input/Output signals		Standard 16 in/16 out 24 VDC
Built-in air tube	$\phi 8$	Mounting position		Floor



Installation Environment

Temperature	0-45°C	Humidity	20~80%RH(no condensing)	No corrosive or combustible gas, no water, no splashing	No excessive oil or dust
Vibrations	Below 4.9M/S2 (0.5G)	Altitude	Below 1000M	Away from electromagnetic source	Away from magnetic field

Control cabinet specifications

Overall dimension	420(width)*450(depth)*200(height)mm (with protrusions)
Approximate mass	18.5KG
Cooling method	Natural cooling
Power specifications	1PH 220V 50/60HZ
Grounding	Industrial grounding (dedicated grounding,resistance below100Ω)
Input/Output signal	General signal:16 input,16 output
Position control method	Serial communication EtherCAT.TCP/IP
Memory capacity	JOB: 200000 steps,10000 robot commands (total 200M)
LAN(Host link)	Ethercat(1pc) TCP/IP(1pc)
Control mode	Servo position control
Ambient temperature	In use:0~ + 45°C,In storage: - 20~ + 60°C
Driver unit	AC servo system (6-axis)
Relative humidity	10%~90%(no condensing)
Vibrate	Below 0.5G

Serial port I/F

RS485(1pc) RS422(1pc) RS232(1pc) CAN(1pc) USB(1pc)

Altitude

Below 1000m. Derate 1% for every additional 100m if over 1000m. Maximum 2000m.

Others

No dust, cutting fluid (including coolant), organic solvent, oil smoke, water, salt, medicine, anti-rust oil, strong microwave, ultraviolet light, X-ray, radiation exposure

Teach pendent specifications

External dimensions	280(width)*220(depth)*120(height)mm (with protrusions)
Gross weight	0.6KG
Material	Reinforced plastics
Display	8 inch color LED,640*480 pixels
Protection class	IP54
Cable Length	Standard 6m. Optional: 8m, 10m, 15m

Manipulator

Selector, axis operation, value, mode selection with key (teach mode/auto mode/remote mode), emergency stop, enable, USB port etc


ATTENTION

Please read the user manual and relevant documentations before use.

Contact official staff or distributor of YASAKA if there are any errors, faults or if the robot is a harm to human safety.

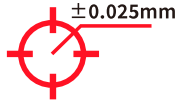
All data, drawings and specifications provided in this catalog are purely for information purposes and do not constitute a guarantee of these characteristics. The extent of goods delivered and services performed is determined by the subject matter of the specific contract. No liability accepted for errors or omissions.

SPECIFICATIONS

TECHNICAL SPECIFICATION



Max payload



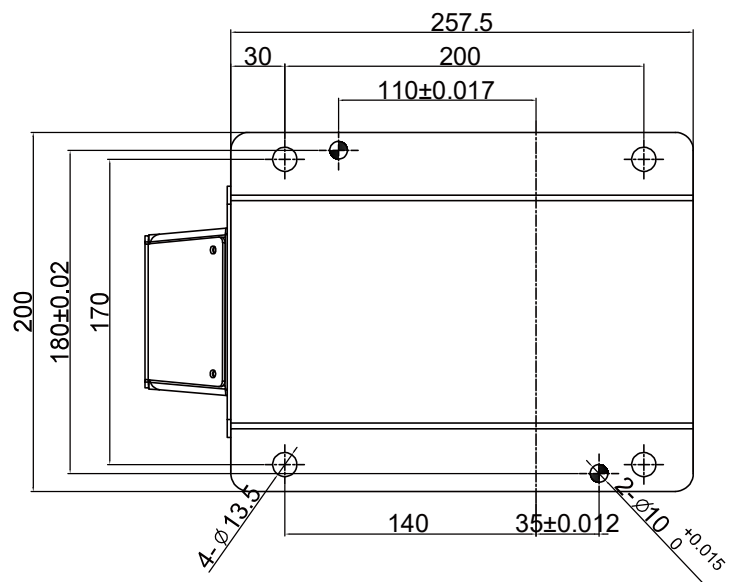
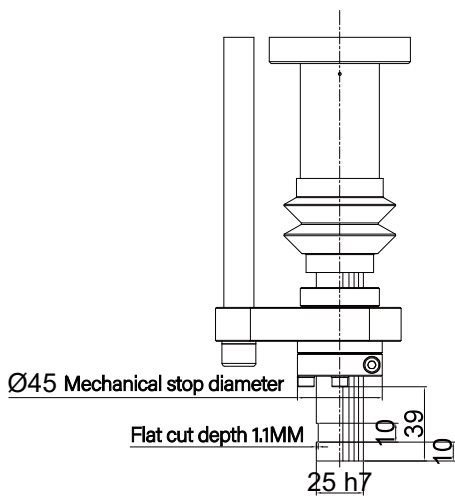
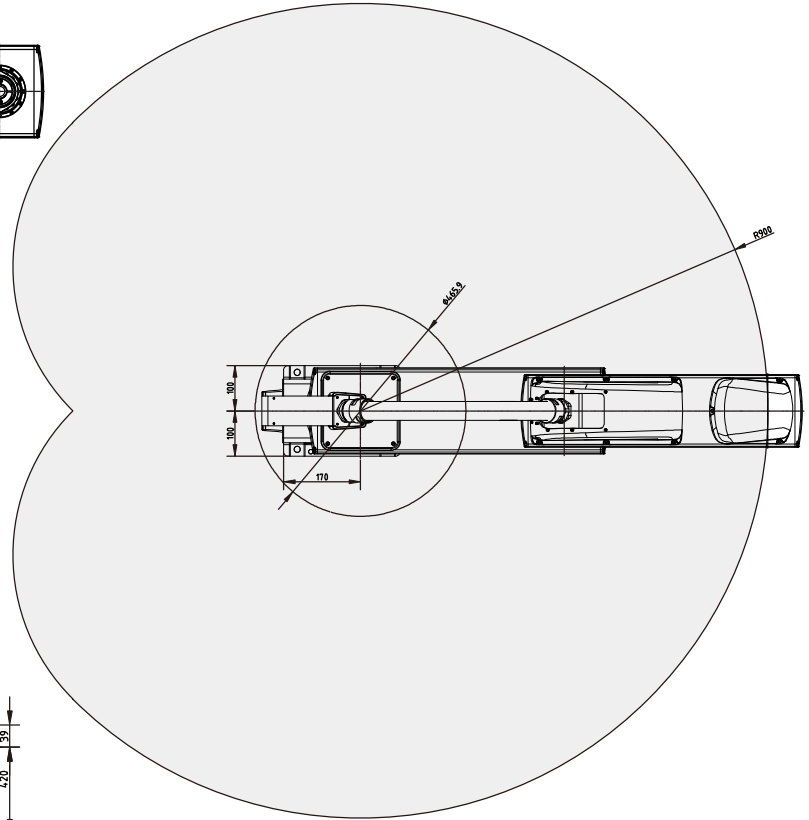
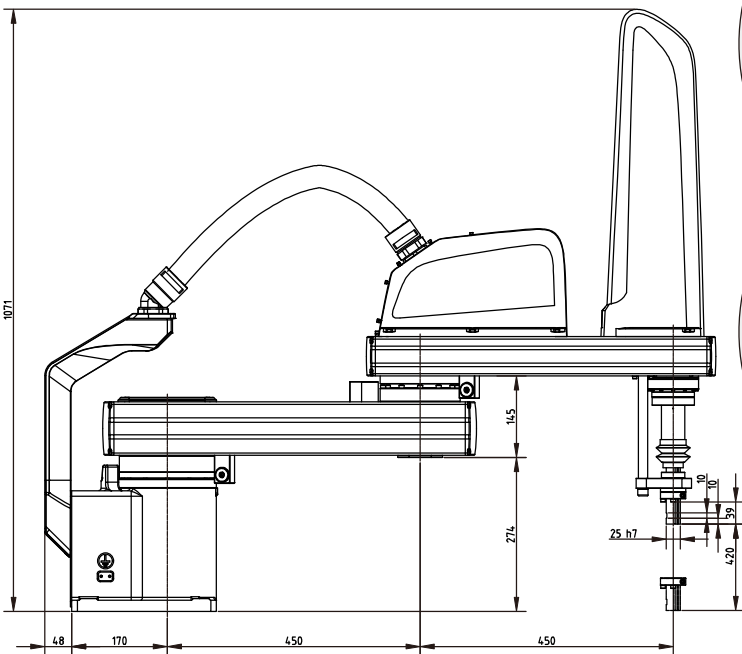
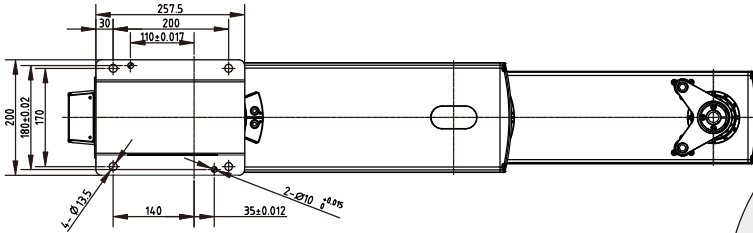
Repeatability



Moving range

External dimensions and moving range 

P moving range 



End flange installation dimensions 

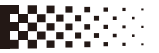
Base installation dimensions 

YS25SC-1000

PAYLOAD : 10-25KG REPEATABILITY : $\pm 0.025\text{mm}$



Number of axis	4-axis		Maximum speed	Moving range
Motion radius	1000mm	J1 axis S	J1+J2	$\pm 135^\circ$
Power capacity	3.0KVA	J2 axis L	11520mm/s	$\pm 150^\circ$
Max payload	Rated 10KG/Max 25KG	J3 axis U	2020mm/s	420mm
Repeatability	$\pm 0.025\text{mm}$	J4 axis R	720°/s	$\pm 360^\circ$
Robot mass	66KG	Input/Output signals		Standard 16 in/16 out 24 VDC
Built-in air tube	$\phi 8$	Mounting position		Floor



Installation Environment

Temperature	0-45°C	Humidity	20~80%RH(no condensing)	No corrosive or combustible gas, no water, no splashing	No excessive oil or dust
Vibrations	Below 4.9M/S2 (0.5G)	Altitude	Below 1000M	Away from electromagnetic source	Away from magnetic field

Control cabinet specifications

Overall dimension	420(width)*450(depth)*200(height)mm (with protrusions)
Approximate mass	18.5KG
Cooling method	Natural cooling
Power specifications	1PH 220V 50/60HZ
Grounding	Industrial grounding (dedicated grounding, resistance below 100Ω)
Input/Output signal	General signal: 16 input, 16 output
Position control method	Serial communication EtherCAT, TCP/IP
Memory capacity	JOB: 200000 steps, 10000 robot commands (total 200M)
LAN(Host link)	Ethercat(1pc) TCP/IP(1pc)
Control mode	Servo position control
Ambient temperature	In use: 0~ + 45°C, In storage: - 20~ + 60°C
Driver unit	AC servo system (6-axis)
Relative humidity	10%~90%(no condensing)
Vibrate	Below 0.5G

Serial port I/F

RS485(1pc) RS422(1pc) RS232(1pc) CAN(1pc) USB(1pc)

Altitude

Below 1000m. Derate 1% for every additional 100m if over 1000m. Maximum 2000m.

Others

No dust, cutting fluid (including coolant), organic solvent, oil smoke, water, salt, medicine, anti-rust oil, strong microwave, ultraviolet light, X-ray, radiation exposure

Teach pendant specifications

External dimensions	280(width)*220(depth)*120(height)mm (with protrusions)
Gross weight	0.6KG
Material	Reinforced plastics
Display	8 inch color LED, 640*480 pixels
Protection class	IP54
Cable Length	Standard 6m. Optional: 8m, 10m, 15m

Manipulator

Selector, axis operation, value, mode selection with key (teach mode/auto mode/remote mode), emergency stop, enable, USB port etc



ATTENTION

Please read the user manual and relevant documentations before use.

Contact official staff or distributor of YASAKA if there are any errors, faults or if the robot is a harm to human safety.

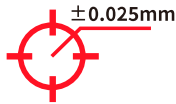
All data, drawings and specifications provided in this catalog are purely for information purposes and do not constitute a guarantee of these characteristics. The extent of goods delivered and services performed is determined by the subject matter of the specific contract. No liability accepted for errors or omissions.

SPECIFICATIONS

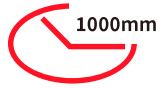
TECHNICAL SPECIFICATION



Max payload



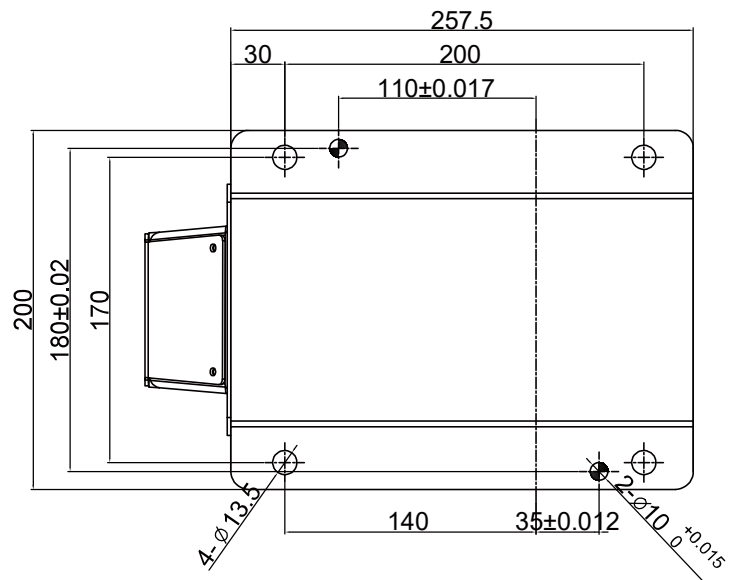
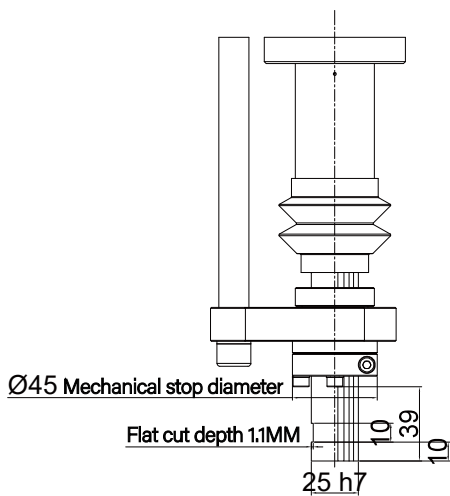
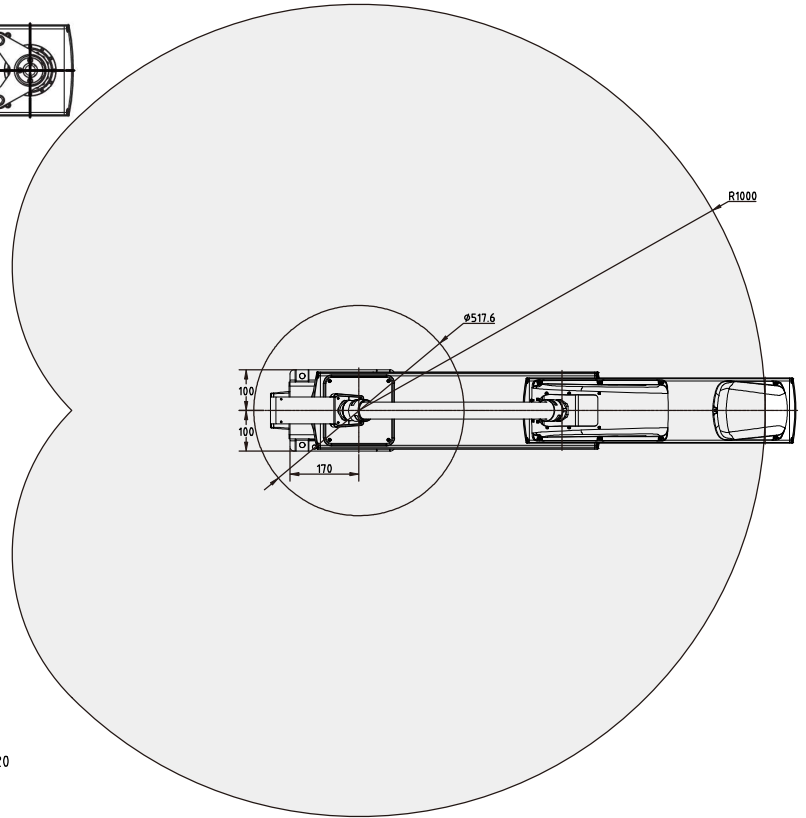
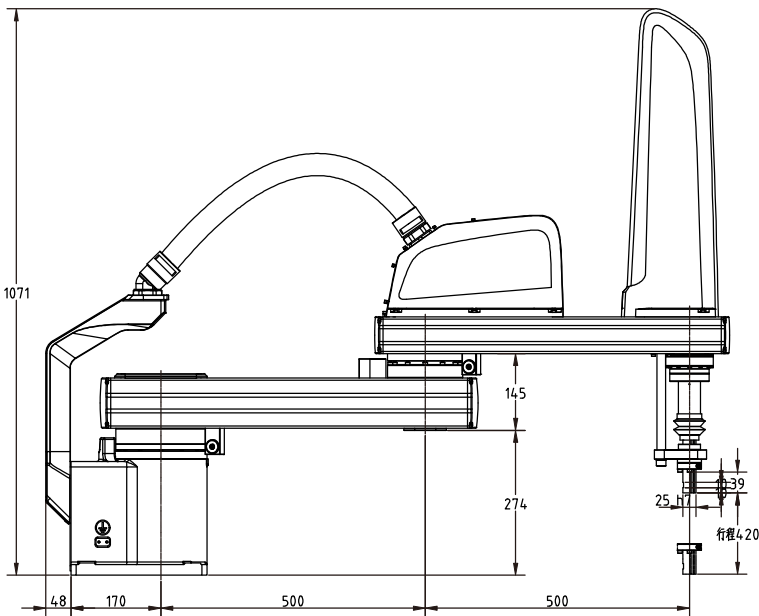
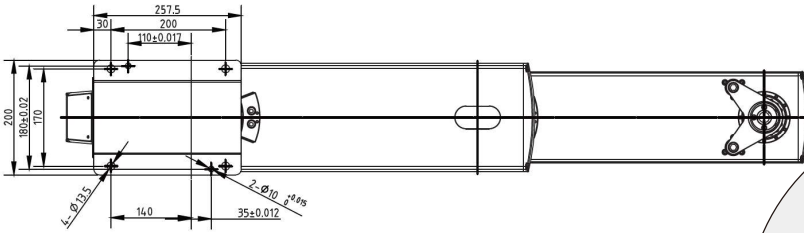
Repeatability



Moving range

External dimensions and moving range ◀

P moving range ◀



End flange installation dimensions ◀

Base installation dimensions ◀