

# Slim Waist Design · Q5

Redefining Service Robots

XHAND - Lite

Whole-Body Teleoperation Solution

Comprehensive Data Collection Solution

Simultaneous release

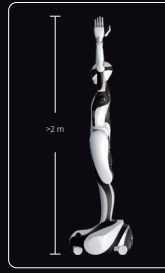
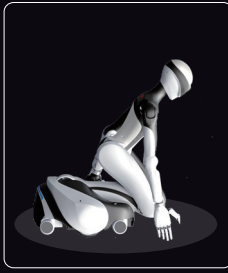
Product Model	Q5	DoF(Degree of Freedom)	44
Height	582*519*1650 mm	Weight	70 Kg
Max Dual-Arm Payload	10 kg	Arm Span	1380 mm
Working Range	0 m~2 m	Sensing Capability	3D Laser Radar+Stereo Camera
Load Runtime	> 4hour	Supply Voltage	60 V



Please Scan

MKT@robotera.com  
www.robotera.com

## 01/ Wide-range movement and dextrous manipulation



### Equipped with XHAND Lite

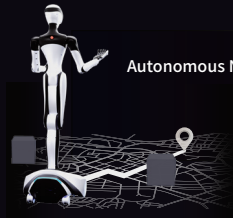
11 DoF, slim and elegant, human-hand sized; Fast response: up to 10 CPS; High force output (Single-hand payload: 10 kg)

\*CPS (Clicks Per Second)

### Full-Range High-precision Manipulation

High-precision, 7-DOF anthropomorphic robotic arm with a 1380 mm reach — capable of touching the ground below and extending upwards beyond 2 meters

## 02/ Easy maneuver in tight space



### Autonomous Navigation with Full-Area Intelligence

LiDAR fused with vision enables reliable navigation in complex environments



### Compact Body for Agile Movement

Compact Body for Agile Movement  
Chassis dimensions: 582 mm (L) × 519 mm (W) × 225 mm (H)  
Ultra-compact design allows smooth passage through narrow spaces

## 03/ Hyper Anthropomorphic Form and Intelligent Interaction

### Humanlike Dialogue

Fast Response | High Recognition Accuracy |  
Human-Like Voice | Knowledge-Rich



### Humanlike Appearance Slim Waist Design

Binocular Camera

Neck: 2 DoF

Status Display Screen

Arms: 7 DoF × 2

Hands: 11 DoF × 2

Waist: 1 DoF

Legs: 3 DoF

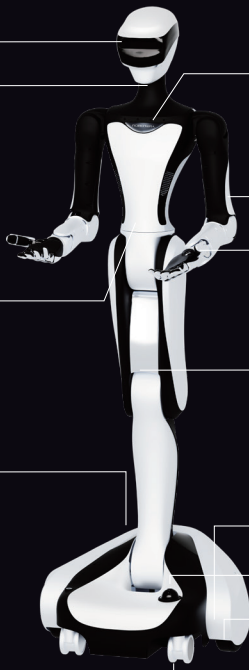
Status Light

Chassis: 2 DoF

3D LiDAR

Drive Wheels × 2

Omni Wheels × 4



## 04/ Remote low latency full body teleoperation

Compatible with Gloves, VR, and Other  
Teleoperation Devices; Supports Remote  
Full-Body Control



## 05/ EraAI Platform: end to end embodied AI platform



01

Teleoperation Data  
Collection and Transmission

02

Data Processing

03

Model Training

04

Simulation Verification

05

Real-World Deployment

06

Closed-Loop Validation

## 06/ Applications

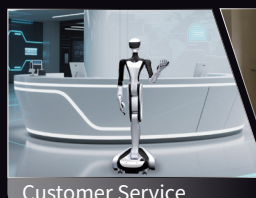
### Shopping Mall Guidance



### Tourism Interpretation



### Home Services



Customer Service



Health Care



Education