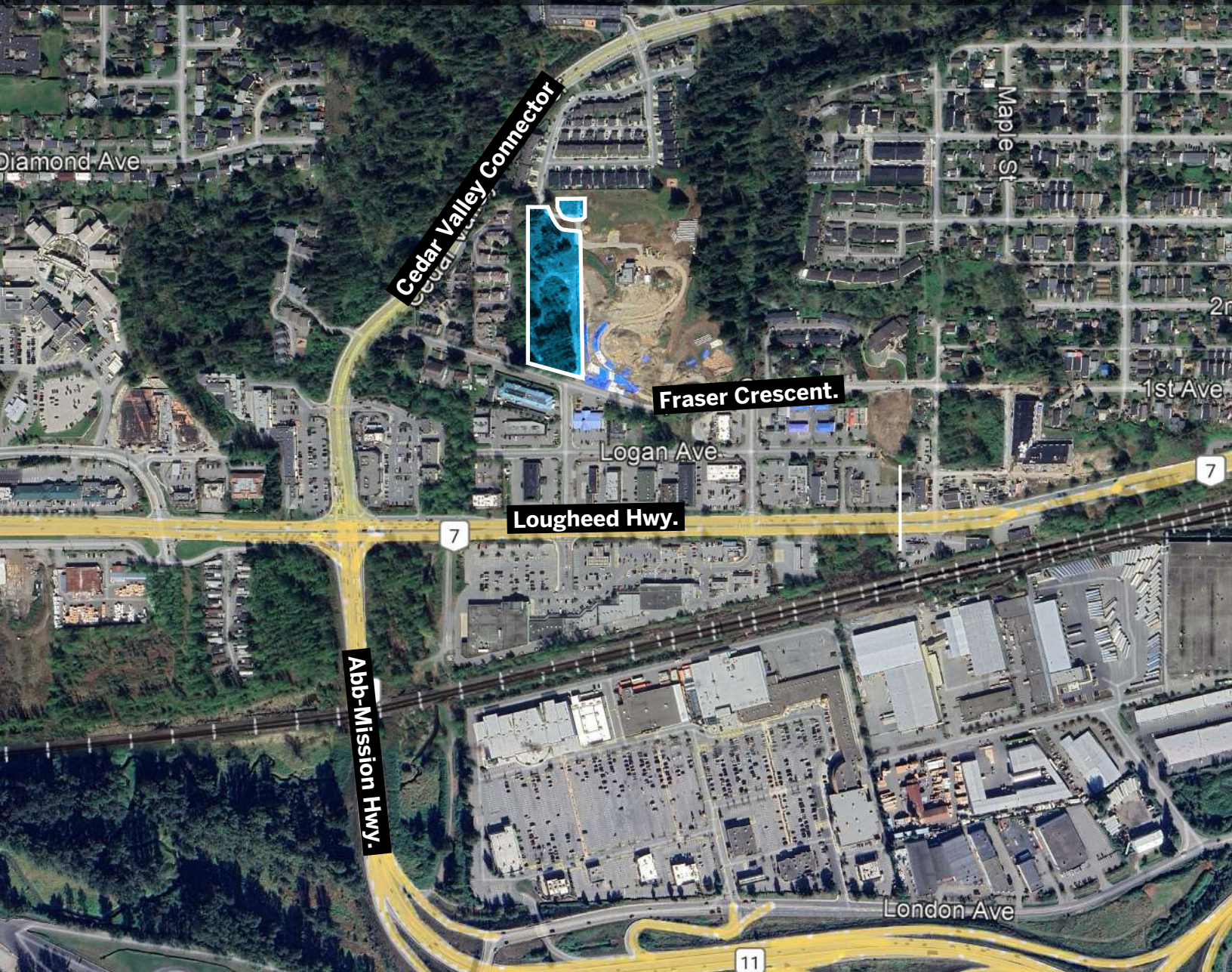


# 32551 Fraser Cres, Mission

Future Mid-Rise Residential Development Site (Up to 3.0 FAR)



**SITE SIZE:**  
Est. 3.73 Acres

**AREA:**  
Mission Core

**DD LINK:**  
[Click here](#)

**LIST PRICE:**  
**\$6,950,000**

## PROPERTY DESCRIPTION

**CIVIC ADDRESS:** 32551 Fraser Cres, Mission, BC

**SIZE:** Est. 3.73 Acres

**PROPERTY TAXES:** \$33,548.96

**LIST PRICE:** **\$6,950,000**

### OPPORTUNITY:

- This is a 3.73-acre attached Mid-Rise Residential development site in the Mission Core OCP. See page 4 for the map & zoning description.

**NOTE:** There is a discrepancy in the reported parcel size. The tax report indicates 3.49 acres, while the draft drawings reference 3.73 acres. Buyer & buyer's agents are advised to verify the site area independently.

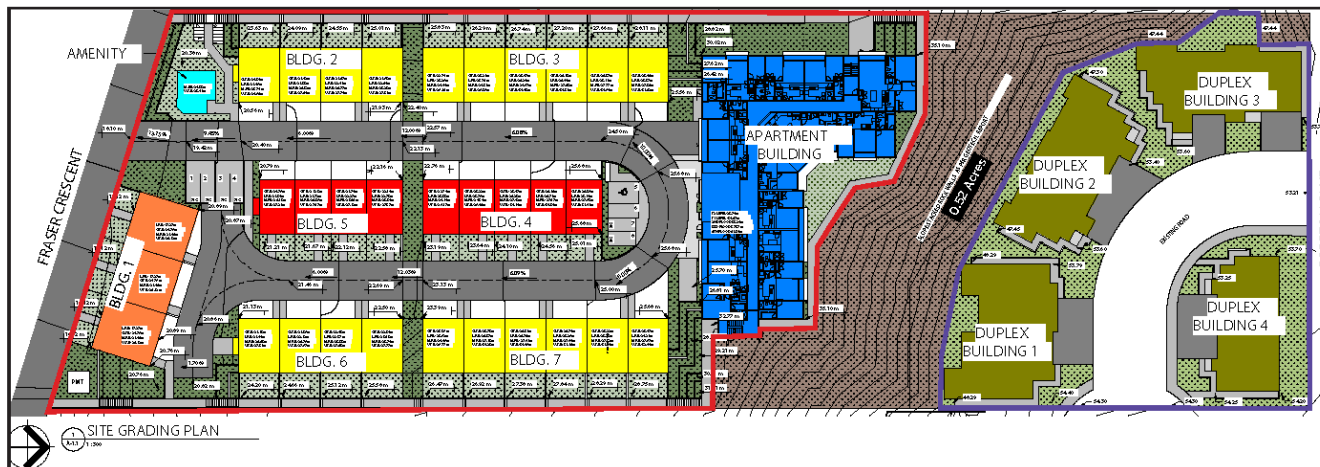
- Please see below & page 3 for Draft Site Plan. Access the full suite of Preliminary Architectural Drawings below:

[32551 Fraser Cres - LIVE DD LINK](#)

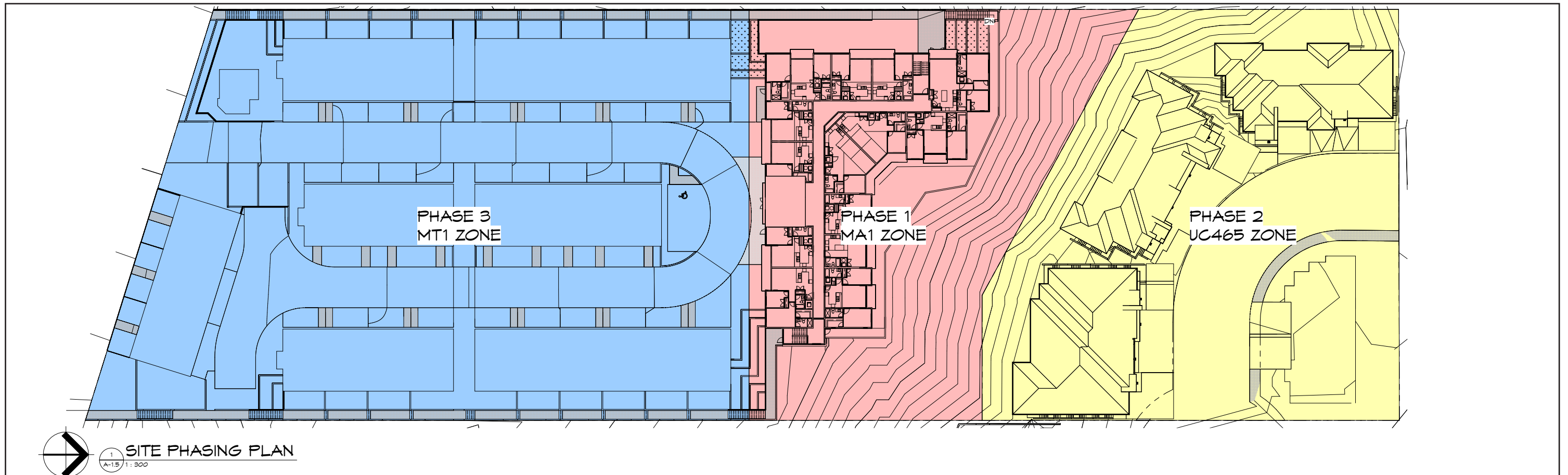
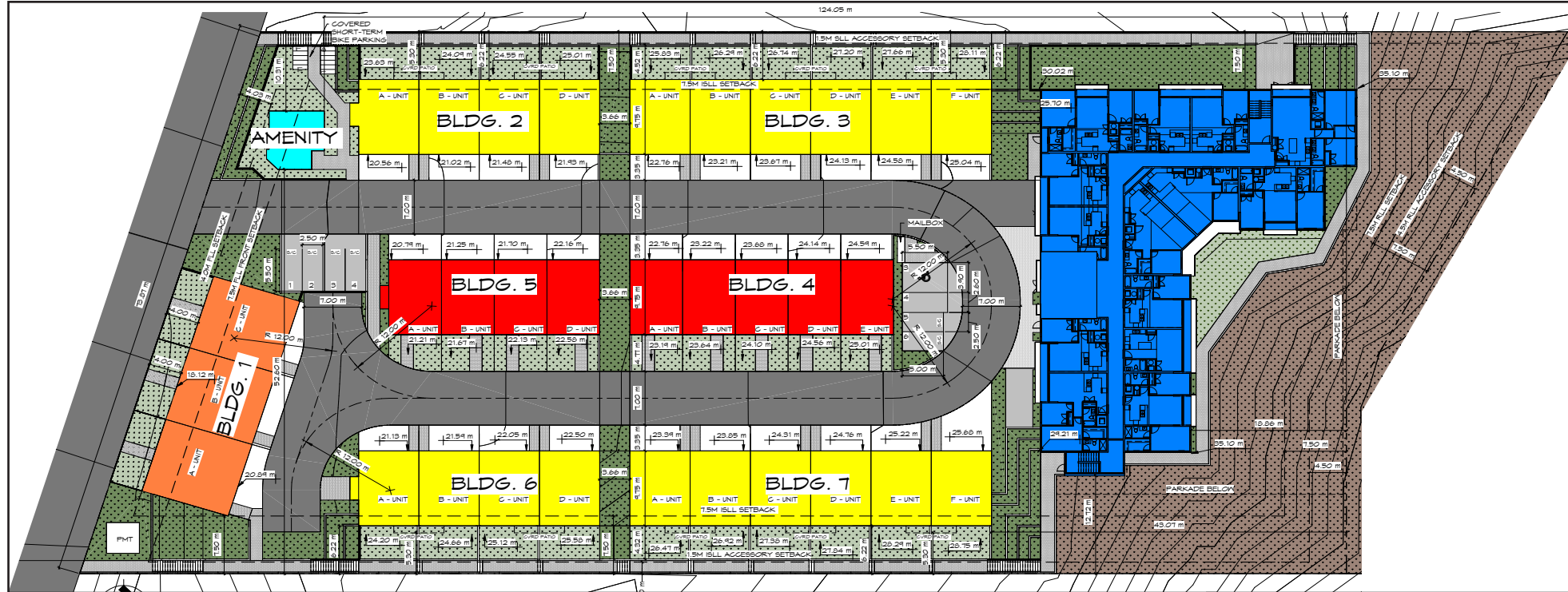
### LOCATION:

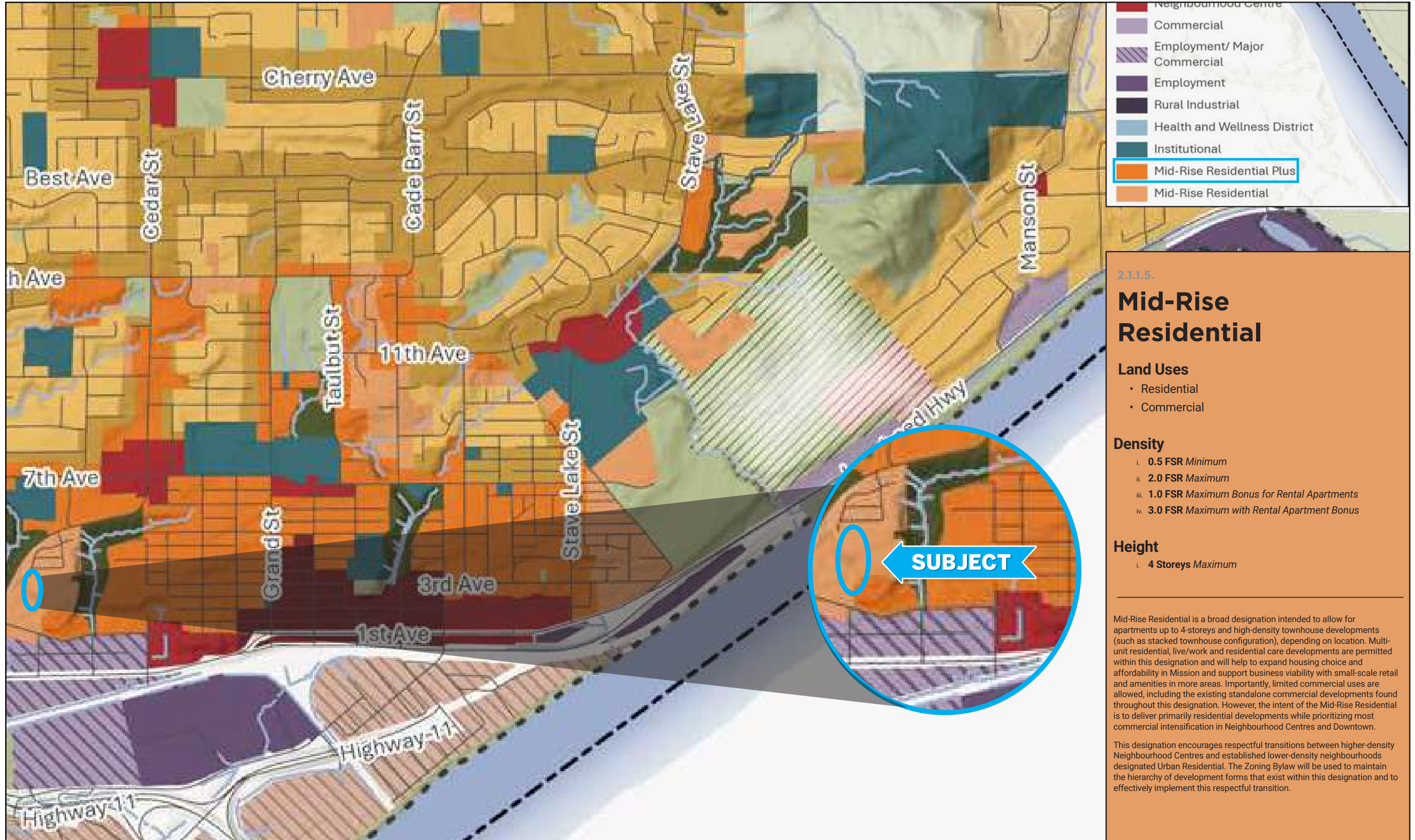
- Located in the strategic core of Mission, the property offers immediate access to Lougheed Highway and seamless connectivity via the Abbotsford-Mission Highway. High visibility and significant local traffic ensure future success for the community.
- Proximity to essential services: Mission Memorial Hospital, downtown shops, dining, and professional services are all within close proximity. Excellent connection to public transit networks, reducing reliance on vehicles.

### DRAFT SITE PLAN:



DRAFT SITE PLAN

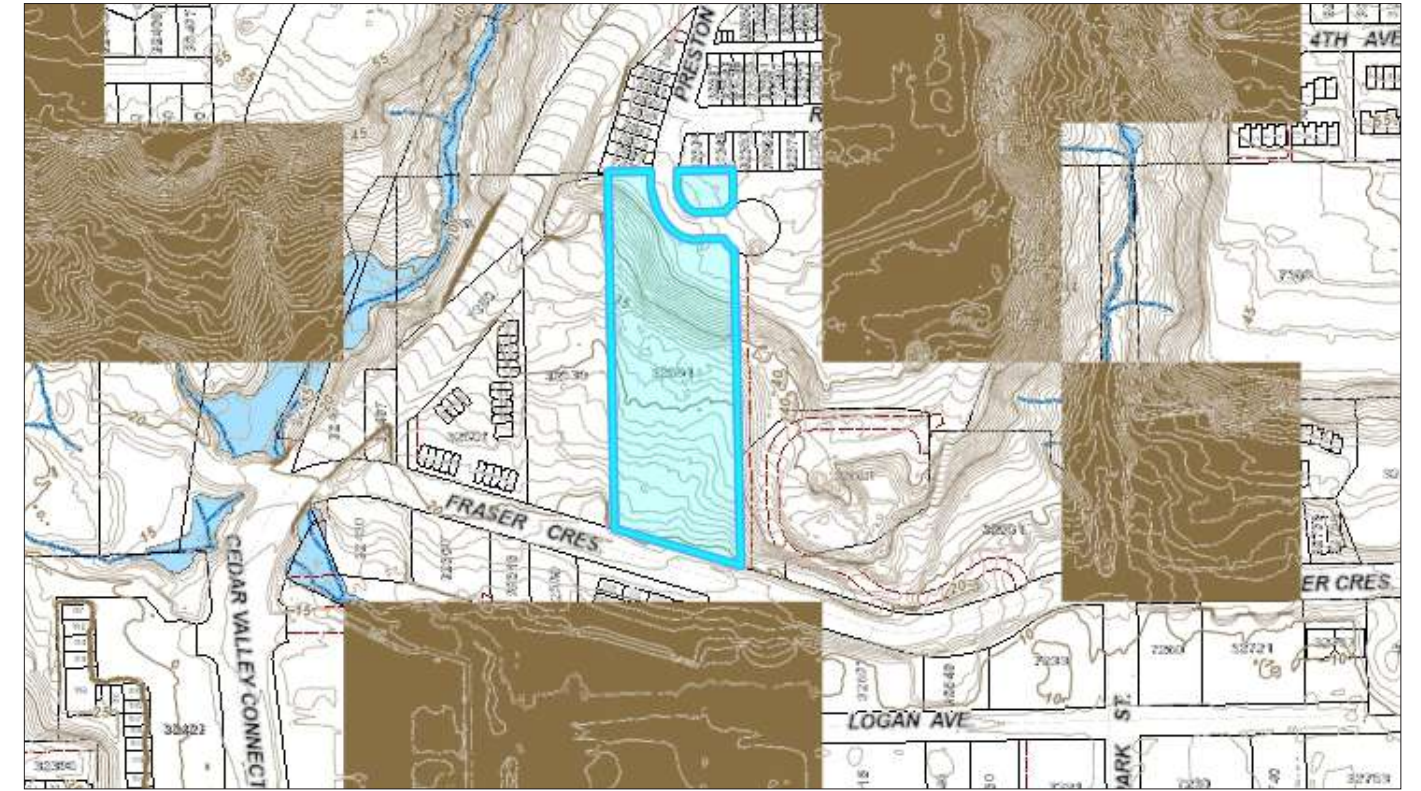




## AERIAL VIEW



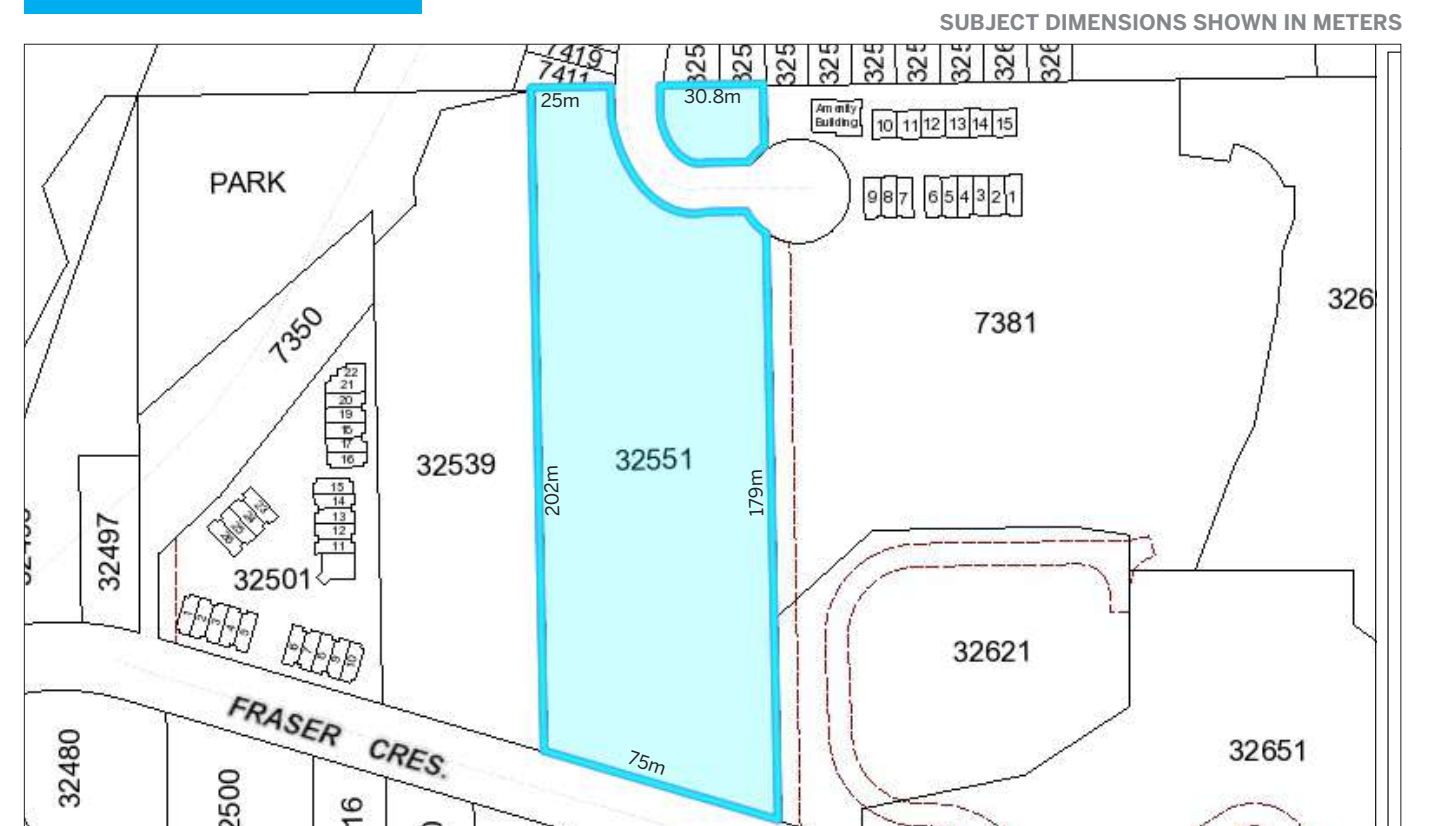
## LEGAL VIEW



## TOPOGRAPHY



## DIMENSIONS



# What's your **property** worth?

If you're considering the sale of a property this year, please call/text for an assessment [236.866.6036](tel:236.866.6036) or email at [team@varinggroup.com](mailto:team@varinggroup.com)

