

1975 182 St, South Surrey

**Serviced Building Lot (Build Your Dream Estate)**



**SITE SIZE:**  
1.2 Acres

**AREA:**  
Grandview/Redwood

**LIST PRICE:**  
**\$2,450,000**

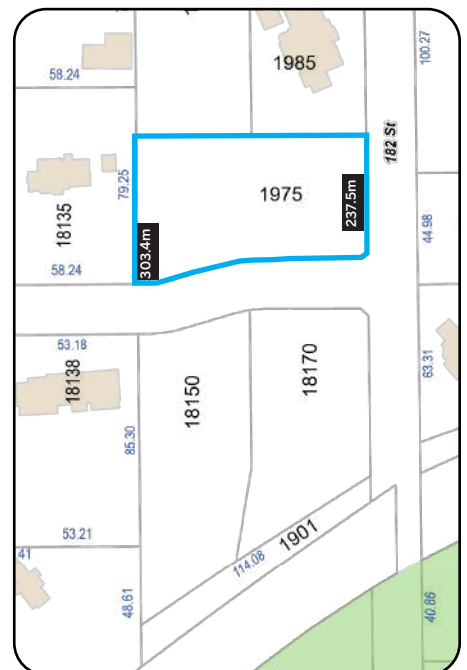
**CONCEPTUAL PLAN**



Redwood Park Estate - Site Plan

1.2 ACRES - 19A AVE, SURREY, BC

**DIMENSIONS**



## PROPERTY DESCRIPTION

<b>CIVIC ADDRESS:</b>	1975 182 St, South Surrey
<b>SIZE:</b>	1.2 Acres
<b>AREA:</b>	Grandview/Redwood
<b>BC ASSESSMENT:</b>	\$2,303,000
<b>LIST PRICE:</b>	<b>\$2,450,000</b>

### OPPORTUNITY:

- Serviced Estate Lot with the potential to build a custom luxury residence of up to +/-15,000 SF, including a potential 6–10 car garage.
- Elevated Estate Setting with 180° Unobstructed Valley Views, offering an exceptional opportunity to create a signature residence in one of South Surrey’s most exclusive enclaves.
- Generous Lot Dimensions provide flexibility for a substantial home, outdoor living spaces, and estate-style landscaping.
- Surrounded by luxury residences and minutes to Redwood Park, Morgan Crossing, Grandview Corners, golf courses, White Rock Beach, Hwy 99, and the U.S. Border Crossing.

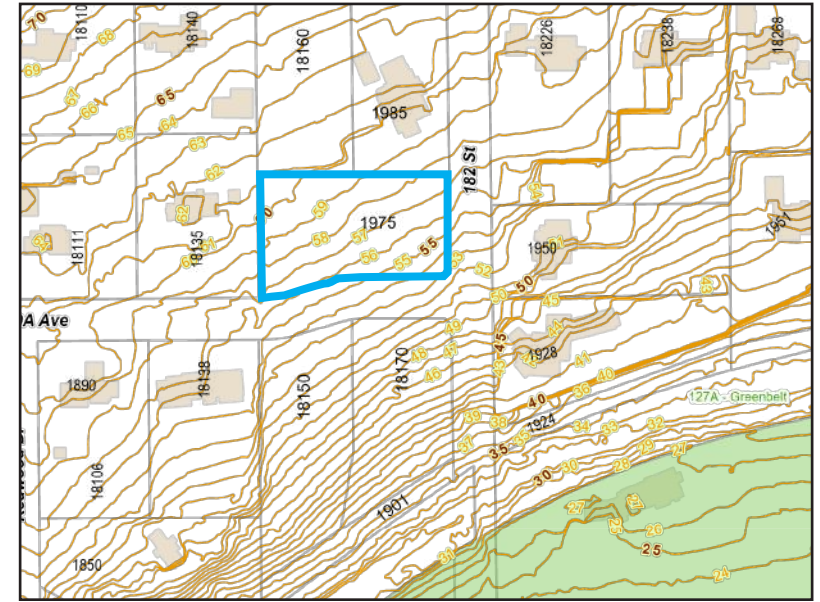
### PROPOSED HOMES FOR SOUTHERN LOTS:



18150 19A Ave, Surrey

18170 19A Ave, Surrey

### TOPOG VIEW



### LEGAL VIEW

