

V SERIES

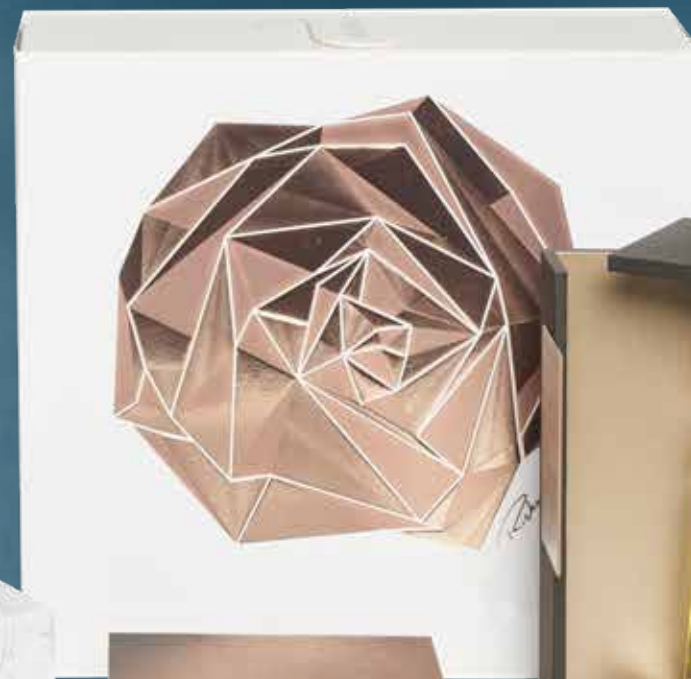
DIGITAL FLATBED CUTTERS FOR PACKAGING

THINK OUTSIDE
THE **BOX**

ENG

Summa / valiani
your perfect cut

Summa / valiani
your perfect cut

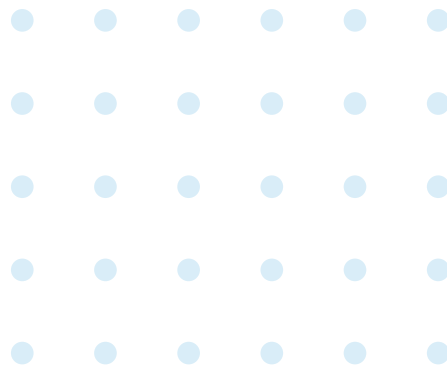




THINK OUTSIDE THE BOX

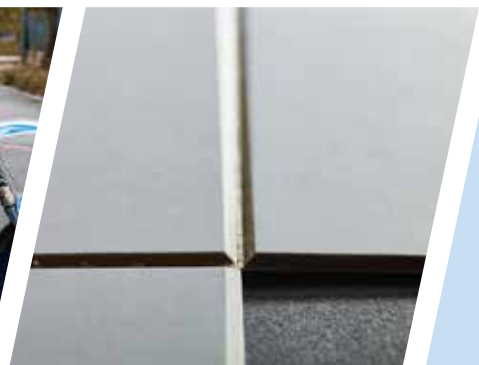
The V Series is a range of digital flatbed cutting systems known for their **versatility and precision**. Designed to cater to various industries, including printing, signage, packaging, and apparel, these cutters are capable of processing a wide array of materials, such as folding carton, corrugated cardboard, vinyl, PVC, foam board, leather, and fabrics.

The V Series stands out with high-quality V- and kiss-cut tools, seamless tool compatibility across all machines, and **intuitive software** that enables one-click workflow setup. Plus, it comes with a 5-year warranty*.



**FOR EVERY CUTTING NEED,
THERE IS A SUMMA**

* The 5-year warranty applies to all machines except the Omnia.





12 REASONS WHY THE V SERIES IS PERFECT FOR YOU

1

HIGH-QUALITY V-CUTTING AND KISS-CUTTING

2

FOR PROTOTYPING AND SHORT TO MEDIUM PRODUCTION RUNS

3

FOR THE PACKAGING, SIGNS, AND APPAREL INDUSTRIES

4

SMALL FOOTPRINT SIZES

5

QUICK AND EASY TOOL SWAP

6

USER-FRIENDLY SOFTWARE WITH ONE-CLICK WORKFLOWS

7

SEAMLESS TOOL COMPATIBILITY ACROSS ALL MACHINES

8

TOP-NOTCH ITALIAN DESIGN AND ENGINEERING

9

50+ YEARS OF EXPERTISE

10

QUICK MACHINE SETUP

11

AVAILABLE IN MULTIPLE BED SIZES

12

5-YEAR WARRANTY*



Invicta V Series

» Bring prototypes to life quickly

- Single-head flatbed cutter for packaging and signmaking
- Optimised for cutting operations, such as rubber blankets for offset printing, motorbike decals, road signs, ejection rubber, and membrane keyboards.
- Ideal for creating samples and short packaging runs.
- Perform precise die and kiss-cutting on stickers and thick adhesives.
- Rich tool setup, capable of cutting up to 20 mm thick.

Models	V0806	V0812	V1015	V1612
Cutting size	812 x 610 mm (32" x 24")	812 x 1219 mm (32" x 48")	1016 x 1524 mm (40" x 60")	1550 x 1220 (61" x 48")
Acceleration	Up to 0.5 m/s ² (19.7"/s ²)	Up to 0.5 m/s ² (19.7"/s ²)	Up to 0.5 m/s ² (19.7"/s ²)	Up to 2 m/s ² (78.7"/s ²)
Cutting Speed	Up to 400 mm/s (16"/sec)	Up to 400 mm/s (16"/sec)	Up to 400 mm/s (16"/sec)	Up to 910 mm/s (26.3"/sec)
Repeatability	≤0.1 mm (0,0039")	≤0.1 mm (0,0039")	≤0.1 mm (0,0039")	≤0.1 mm (0,0039")



Optima V Series

» Transition seamlessly from prototyping to short runs

- Double-head flatbed cutter for packaging and signmaking projects
- Cut, crease, draw, kiss-cut, and v-cut with ease.
- The preferred choice in the packaging market for prototyping and short runs.
- Specifically designed for V-cutting on greyboard.
- Rich tool setup, capable of cutting up to 20 mm thick.
- Eliminates the need for traditional die-cutting processes.

Models	V1208	V1225	V1612	V1630
Cutting size	1200 x 850 mm (42.2" x 33.5")	1200 X 2500 mm (47.2" x 98.4")	1600 X 1230 mm (63" x 48.4")	1600 x 3030 mm (63"x119.2")
Acceleration	Up to 1 m/s ² (39.4"/s ²)	Up to 1 m/s ² (39.4"/s ²)	Up to 1 m/s ² (39.4"/s ²)	Up to 1 m/s ² (39.4"/s ²)
Cutting Speed	Up to 583 mm/s (23"/sec)	Up to 583 mm/s (23"/sec)	Up to 583 mm/s (23"/sec)	Up to 583 mm/s (23"/sec)
Repeatability	≤0.1 mm (0,0039")	≤0.1 mm (0,0039")	≤0.1 mm (0,0039")	≤0.1 mm (0,0039")



Integra

V Series



Omnia ^[EVO]

V Series

» Easily switch between board, sign, and packaging materials

- Double-head flatbed cutter for a broad range of signmaking applications.
- Mill, cut, crease, kiss-cut, and v-cut with the Integra.
- Equipped with a 1 KW router, capable of up to 45,000 rpm.
- Effectively handles materials like acrylic, Alu-dibond composite, thick PVC forex, and MDF wood.
- An ideal complement to UV flatbed printers.

Models	V1225	V1612	V1620	V1630
Cutting size	1230 x 2500 mm (48.4" x 98.5")	1620 x 1230 mm (63.7" x 48.4")	1600 x 2030 mm (63" x 80")	1600 x 3030 mm (63" x 119.2")
Acceleration	Up to 2.0 m/s ² (78.5"/s ²)	Up to 2.0 m/s ² (78.5"/s ²)	Up to 2.0 m/s ² (78.5"/s ²)	Up to 2.0 m/s ² (78.5"/s ²)
Cutting Speed	Up to 1000 mm/s (39.3"/sec)	Up to 1000 mm/s (39.3"/sec)	Up to 1000 mm/s (39.3"/sec)	Up to 1000 mm/s (39.3"/sec)
Repeatability	≤0.1 mm (0,0039")	≤0.1 mm (0,0039")	≤0.1 mm (0,0039")	≤0.1 mm (0,0039")

» Smartly automate short-medium production runs

- Double-head flatbed cutter for fully automated and short-run production.
- Establish an automated, independent workflow that runs 24/7.
- Cut and create a wide variety of media, up to 12 mm in thickness.
- Add QR codes to your designs for diversified production capabilities.
- Features a 300 GSM capacity feeder, conveyor belt, and catch tray.
- Supports cutting and creasing in formats ranging from A4 to B1.
- Load SRA3 or A3+ two at a time with Dual Sheet Mode.
- Opt for the **Omnia EVO** to boost acceleration for faster production.

Models	V0708	V0710	V0710 EVO
Cutting size	750 x 800 mm (29.5" x 31.5")	750 x 1050 mm (29.5" x 41.3")	750 x 1050 mm (29.5" x 41.3")
Acceleration	Up to 4 m/s ² (157"/s ²)	Up to 4 m/s ² (157"/s ²)	Up to 9 m/s ² (354.33"/s ²)
Cutting Speed	Up to 1167 mm/s (46"/sec)	Up to 1167 mm/s (46"/sec)	Up to 1167 mm/s (46"/sec)
Repeatability	≤0.1 mm (0,0039")	≤0.1 mm (0,0039")	≤0.1 mm (0,0039")

TOOLS

Powerful Pneumatic Oscillating Knife

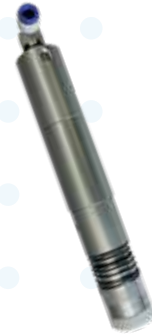


The Powerful Pneumatic Oscillating Knife is the perfect tool for cutting heavy materials up to 20 mm thick with an 8 mm stroke and 9.000 BPM.

honeycomb board, foamboard, coroplast board, rubber gaskets...



High Speed Pneumatic Oscillating Knife



The High-Speed Oscillating Cutting Tool offers precise, high-speed cutting for various soft materials with an 8 mm stroke and 14,000 BPM.

multi-flute corrugated board, textile and leather, foamboard, micro corrugated board...



Multipurpose Tangential Knife



The Multipurpose Tangential Knife delivers high-quality, precise cuts at full speed on materials up to 5 mm thick, handling a variety of thin materials.

folding carton, paperboard, micro corrugated board, motorbike decals, grey chipboard...



Kiss-Cut Tangential Knife



The Kiss-Cut Tangential Knife accurately peels the top layer of thin materials, with a spring-controlled blade and manual depth control, ideal for applications like vinyl stickers and labels.

paper <200 gr, adhesive vinyl sandblast, adhesive PVC banner, protective film...



Universal Creasing Tool



The Universal Creasing Tool features 9 interchangeable wheels for creasing and perforating various materials, with adjustable pressure for clean, precise results.

multi-flute corrugated board, textile and leather, foamboard, micro corrugated board...



Multi-Wall Creasing Tool



The Multi-Wall Creasing Tool features 4 multi-flute creasing wheels that are designed to produce fine, clean creases with adjustable pressure.

single- and triple-wall corrugated board, double-wall archival board, polypropylene honeycomb...



Plot Drawing Tool



The Plot Drawing Tool allows high-speed labelling of materials like cardstock with text or marks.

folding cardstock, cardstock for apparel patterns, polycarbonate sheet, polyester-based varnishing plates...



V-Cut & Bevel Cut Tool



The V- and Bevel-Cut Tool creates beveled edges and folds on thicker materials of 6 to 16 mm with its adjustable blade angles.

honeycomb board, triple-wall corrugated board, foam board, light coroplast...



Routing Tool



The Routing Tool, with its 1kW router, processes rigid media upto 13 mm thick, with a speed range of 5.000 - 45.000 rpm.

aluminum composite, soft and hard woods and MDF, plexiglass, PVC sheets...



Multipurpose Drawing Tool



Mount a fixed pen tool to the tool holder. The tool accommodates a wide range of pens, pencils, and felt-tip markers, making it ideal for drawing and writing on various materials.

paper, cardboard, textile...



INTERCHANGEABLE TOOLS

White 90° Straight and Half Cut

Materials

grey chipboard sheets, luxury packaging board, varnishing plates, rubber blankets, polyester-based varnishing plates...



Green 40° Bevel cut

Materials

standard mat board up to 2.3 mm (6ply), polyester-based varnishing plates, suede matboard up to 2.3 mm, archival corrugated board...



Purple Embossing / Debossing

Materials

standard matboard, coated and laminated paper, folding cardstock, braille characters...



Blue 45° Bevel cut

Materials

standard mat board, foamboard up to 5 mm, grey chipboard up to 5 mm, luxury packaging board.

Brown Creasing / Scoring

Materials

multi-flute corrugated board, textile and leather, foamboard, micro corrugated board...



Grey 90° Straight Cut

Materials

folding carton, paperboard, micro corrugated board, motorbike decals, grey chipboard...

SOFTWARE

GOPRODUCE FLATBED EDITION

Our user-friendly, in-house-developed software is designed for seamless machine operation. With a modern, intuitive interface, you can maximize efficiency and precision through features such as:

- **Action Sets** allow you to automate tasks in one-click workflows.
- **The Material Manager** enables you to choose your material while the software automatically sets the correct tools.
- **Compensation Modes** help minimise overcuts in corners, ensuring cleaner results.
- **Sorting** optimises cutting paths to reduce work time by sorting objects for the most efficient cuts.
- **Back-side Cutting** protects the printed surface of your boxes for a flawless finish.
- **Barcode Functionality** lets you create a quicker and more efficient workflow.
- **20+ RIPs** are compatible with the GoProduce software, incl. Onyx, Caldera, and FlexiSign.

*You can still use your trusted V Studio if you prefer.

M3 & M3 ART

Access over 600 parametric models with M3, or unlock more than 2,000 with M3 Art. Effortlessly modify, resize, and cut boxes, displays, and 3D objects using a variety of packaging materials, including folding cartons, corrugated board, and grey rigid board.

M3 Art also features an Adobe Illustrator plugin, perfect for graphic designers looking to streamline their workflow.



V Series

DIGITAL FLATBED CUTTERS FOR PACKAGING



About Summa

Summa is a global leader in digital cutting solutions, delivering innovative technology for signage, packaging, textiles, and industrial applications. Our product portfolio includes state-of-the-art vinyl, flatbed, and laser cutters that ensure exceptional precision and quality.

Summa is headquartered in Gistel, Belgium, with regional hubs in USA, Italy and UK. Leveraging more than 50 years of experience, we continue to pioneer cutting-edge technology that redefines precision cutting. Discover more at www.summa.com or join our community on [LinkedIn](#), [Instagram](#), and [YouTube](#).

Summa nv
Rochesterlaan 6
8470 Gistel
Belgium

Summa/Valiani
Via delle Regioni 305
50052 Certaldo - Firenze
Italy



Copyright 2025© Summa nv. Images and graphics shown are for illustration purposes only and may not be an exact representation of the product. Technical specifications are subject to change without prior notice.

Summa / valiani
your perfect cut