

## LED Heliport Beacon



- > 2-level heliport beacon with electronic flash unit
- > Each group of LEDs is also equipped with a bypass, so that in case of failure of one LED, the entire circuit does not fail

### Typical Application



### Heliport Identification

The LEDs are operated with only one part of the rated current.

Thus, a high reliability and serviceability of the entire system is achieved.

The control electronics for the LED are contained in a separate module which is mounted in the cabinet.

A shielded cable is used as a supply line to prevent lightning damage.

The distance between the control electronics and the light is irrelevant, since the module regulates the voltage and current according to the cable pathway.

In addition, the light is equipped with pressure compensation elements to prevent condensation.

Fault messages are sent via potential-free contacts.

This is required for optimum operation of the light.

#### PHYSICAL CHARACTERISTICS

<b>Body Material</b>	Powder-coated aluminum
<b>Body Color</b>	White
<b>Dimensions</b>	
Height	350 mm
Diameter	330 mm
<b>Protection Class</b>	IP 66
<b>Weight</b>	6,7 kg
<b>Mounting</b>	3 M16 x 1,5 holes
<b>Mechanical Stress</b>	Immune to vibrations
<b>Temperature Range</b>	- 40°C to + 90°C

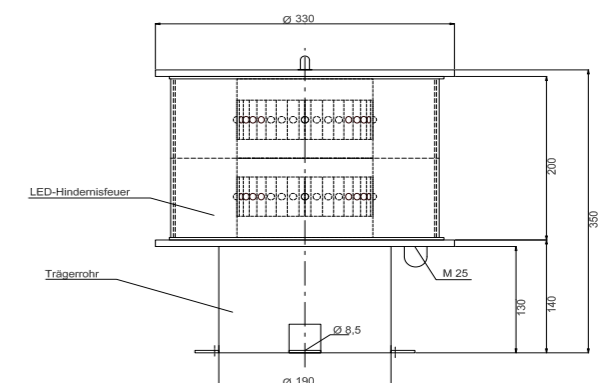
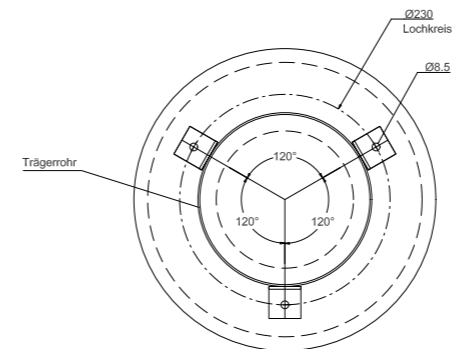
#### OPTICAL CHARACTERISTICS

<b>Light Color</b>	White
<b>Intensities</b>	3%, 10%, 100% (external input)
<b>Optics</b>	Fresnel Optics

#### ELEKTRISCHE NENNDATEN

<b>Power supply</b>	100 to 240 V AC   24 V DC
<b>Power consumption</b>	
Average	50 W
Peak	240 W
<b>Overload Protection</b>	Integrated
<b>Electrical Connection</b>	Placed in junction box with related control cabinet

#### DIMENSIONS



Compliant to:  
 ✓ ICAO Annex 14