

# Fluid X. Vertical.

Our premium glazing collection defined by exceptional craftsmanship, refined design, and enduring quality. Made for bold architecture and uncompromising vision.

Specialising in architectural and structural glazing, we're proud to contribute to some of the most prestigious construction projects across the UK.

We believe that each pane of glass we install is a testament to our unwavering commitment to superior craftsmanship and exceptional service. We collaborate closely with architects, designers, and builders to ensure that every project we undertake is not just completed, but elevated to a new standard of elegance and durability.

Experience the clarity of vision and the integrity of service that define Fluid Glass, where every detail is a reflection of our promise to you.



Our process is driven by the hands and hearts of passionate artisans who bring the finishing touches to your architectural glass projects. We believe in authentic materials and genuine quality. We believe in our team — individuals who work each day with precision, enthusiasm, and care to make your project something unique and extraordinary.

*Jake*

*Adam*

*Valerio*



FLUID GLASS





# X Vertical. Benefits.

Fluid X Vertical is the purest expression of structural glazing—walls of uninterrupted glass that create clarity, openness, and visual stillness. With no visible frames and floor-to-ceiling spans, it allows architecture to dissolve into light and landscape. Whether defining exterior façades or internal partitions, Fluid X Vertical introduces natural light and spaciousness without compromise. It offers more than transparency—it shapes atmosphere, elevates material contrast, and brings architectural intention into sharp focus.

# X Vertical. Information.

Fluid X Vertical combines high-performance glazing with a refined, minimalist system. With slim sightlines, exceptional thermal and acoustic performance, and a wide range of glass and finish options, it offers strength, flexibility, and seamless integration into any architectural vision.

## Dimensions

- ◆ Max Leaf Height : 6 m (larger on request)
- ◆ Max Leaf Width : 3.2 m (larger on request)
- ◆ Max Glass Thickness : 54mm

## Features

- ◆ Fully thermally broken aluminium
- ◆ Clip-in channel system (no screws)
- ◆ Market leading strength and reliability

## Options

- ✓ RAL colours
- ✓ Solar control
- ✓ Privacy glass
- ✓ Low Iron glass
- ✓ Body tinted coloured glass
- ✓ Acoustic laminate
- ✓ Easy-Clean coatings
- ✓ CUI in advanced thermal performance
- ✓ Paint or sandblast borders

## Performance

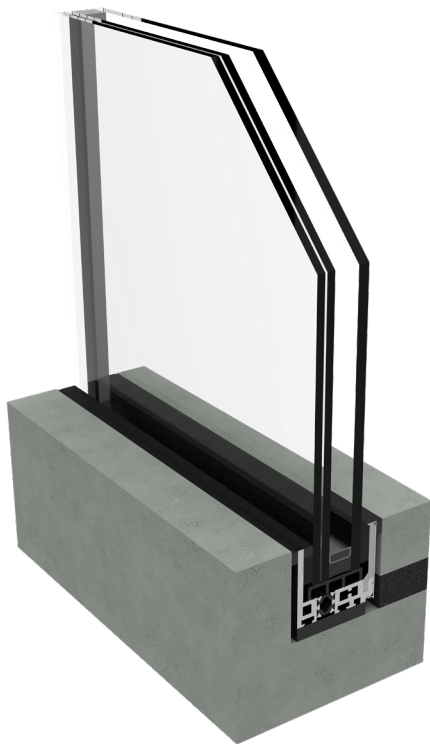
- ◆ Typical UW value : 1.0 U/Wm<sup>2</sup>K
- ◆ Wind load : Tested to 1.8kN/m<sup>2</sup>
- ◆ Sound insulation : Up to 46 dB



FLUID GLASS

# X Vertical. Architecture.

The absence of visible structure creates a calm, monolithic presence that enhances the surrounding materials, views, and spatial flow. Whether used in bold contemporary forms or integrated into sensitive restorations, it offers a timeless visual language that feels simultaneously grounded and weightless.



## **Monolithic and Minimal**

Each installation becomes part of the architectural fabric—fixed glass panels sit seamlessly within floor, ceiling, or wall junctions. The result is a quiet yet powerful design gesture that blurs boundaries and expands perception.

## **Transparency with Intent**

By eliminating frames, mullions, and visual clutter, Fluid X Vertical turns light and reflection into architectural tools. It captures sky, landscape, and interior with clarity, offering visual connections that shift subtly throughout the day.



# X Vertical. Technology.

Beneath its simplicity, Fluid X Vertical is underpinned by precise engineering and rigorous technical control. Designed for both interior and exterior use, it supports large-scale glazing with exceptional thermal and structural performance.

## High-Performance Glazing

With options for double and triple-glazed units up to 60mm, Fluid X Vertical offers thermal values as low as  $0.75 \text{ W/m}^2\text{K}$ . Low-emissivity and solar control coatings ensure year-round comfort, while low-iron glass maximises clarity and light transmission.

## Invisible Strength

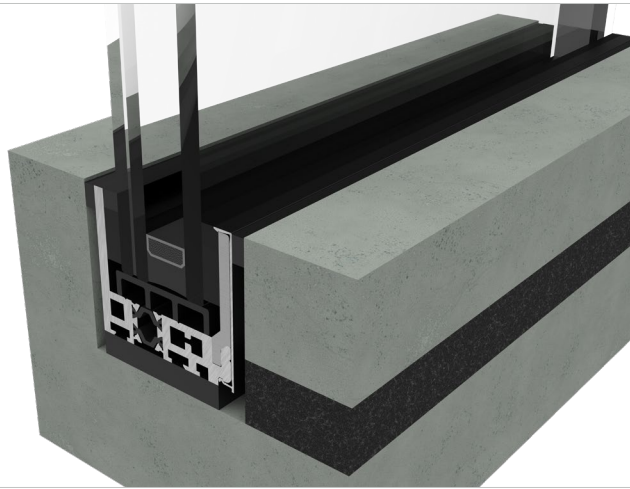
Using structural silicone bonding and hidden fixing techniques, glass panels can be joined edge-to-edge with slim, precision-set tolerances. The result is a perfectly flush finish, engineered to meet wind loads, impact resistance, and acoustic requirements without visible compromise.



FLUID GLASS

# X Vertical. Design.

Every Fluid X Vertical installation is bespoke—tailored to the architectural vision and site conditions. Glass types, thicknesses, coatings, and tints are carefully specified to balance visual clarity with performance. Whether defining a stairwell, framing a view, or shaping an entire façade, Fluid X Vertical offers infinite possibilities through one material: glass.



## Precision in Every Detail

Junctions are seamless. Reflections are clean. Edges align. Every line and shadow is deliberate—crafted to elevate the architecture, not distract from it.

## A Canvas for Architecture

More than a feature, Fluid X Vertical becomes the surface upon which light, space, and structure converge. It is glazing reduced to its most essential form—quiet, powerful, and undeniably architectural.











## Fir Tree Cottage

Nestled in the heart of the East Sussex countryside, this breathtaking project deploys Minimal sliding doors for a contemporary touch.





## Beulah Walk

Beulah Walk is a refined residential transformation in South London, where minimal sliding doors, structural glazing, and rooflights come together to create a light-filled, contemporary living space.





# Fluid X Vertical. Showroom.

By appointment only

Unit 11, Orbital 25 Business Park

Dwight Road, Watford, WD18 9DA



# Your project. Our passion.

Born from an initial desire to create something unique and extraordinary, taking our deep architectural experience and blending it with passion and technological expertise, our design thinking leads the charge in bespoke architectural glazing.