

# Fluid. Sliding Door.

Our original glazing collection, combining clean design, reliable performance, and timeless simplicity. Built for everyday elegance and modern architectural clarity.

Specialising in architectural and structural glazing, we're proud to contribute to some of the most prestigious construction projects across the UK.

We believe that each pane of glass we install is a testament to our unwavering commitment to superior craftsmanship and exceptional service. We collaborate closely with architects, designers, and builders to ensure that every project we undertake is not just completed, but elevated to a new standard of elegance and durability.

Experience the clarity of vision and the integrity of service that define Fluid Glass, where every detail is a reflection of our promise to you.



Our process is driven by the hands and hearts of passionate artisans who bring the finishing touches to your architectural glass projects. We believe in authentic materials and genuine quality. We believe in our team — individuals who work each day with precision, enthusiasm, and care to make your project something unique and extraordinary.

*Jake*

*Adam*

*Valerio*

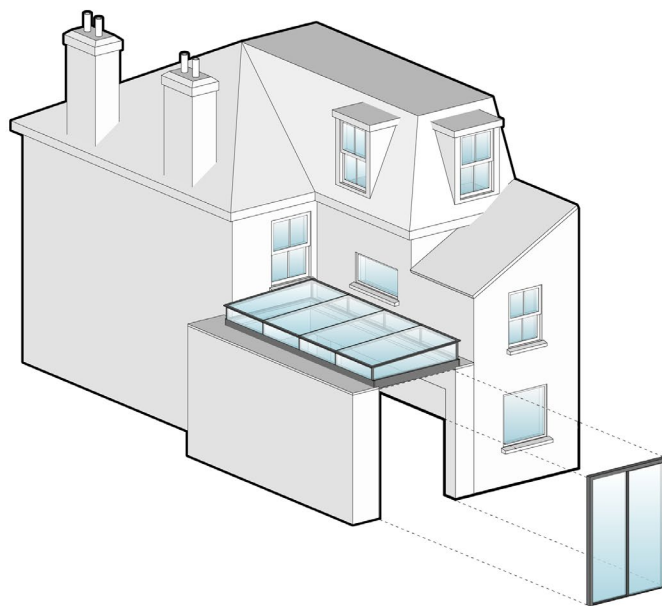


FLUID GLASS



# Sliding Door. Benefits.

The Fluid Sliding Door brings refined simplicity and smooth performance to architectural openings. With ultra-slim 20mm sightlines and high-spec thermal and acoustic insulation, it allows large glass panels to glide effortlessly while maintaining a minimalist aesthetic. Whether opening onto a terrace, framing a garden, or connecting interior zones, it enhances space, light, and usability without visual compromise.



# Sliding Door. Information.

The Fluid Sliding Door features ultra-slim 20mm sightlines and supports panels up to 3m high, 2.5m wide, and 320kg. With a 30mm glazing capacity, it offers internal/external locking, minimal frames, and options including corner openings, pocket systems, hidden rails, motorisation, and trickle ventilation.

## Dimensions

- ◆ Sightlines : 20 mm
- ◆ Max Leaf Height : 3 m
- ◆ Max Leaf Width : 2.5 m
- ◆ Max Glass Thickness : 30mm
- ◆ Max Leaf Weight : 320 kg

## Options

- ✓ Trickle ventilation
- ✓ Corner
- ✓ Hidden Rail
- ✓ Pocket
- ✓ Motorisation
- ✓ RAL colours
- ✓ Anodised finishes

## Features

- ◆ External and internal locking
- ◆ Minimal head and base frame
- ◆ Integrated locking system in coupling

## Performance

- ◆ Thermal Coefficient  $U_w$  : 1,3 W/m<sup>2</sup> K
- ◆ Sound Insulation : Up to 41 dB
- ◆ Water Tightness : Class 7A
- ◆ Air Tightness : Class 4
- ◆ Wind Tightness : Class C5
- ◆ PAS24

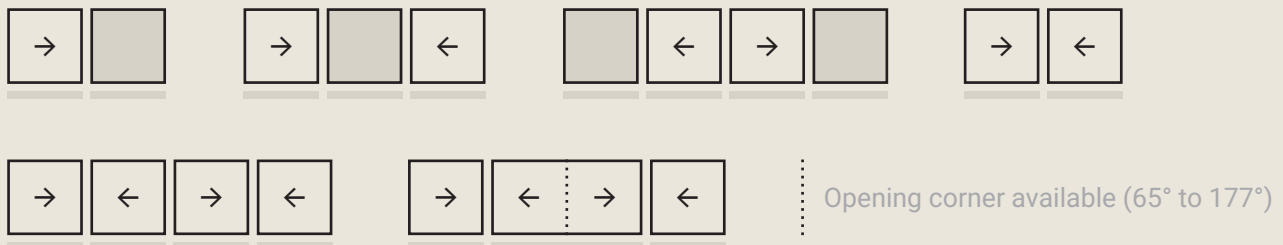


FLUID GLASS

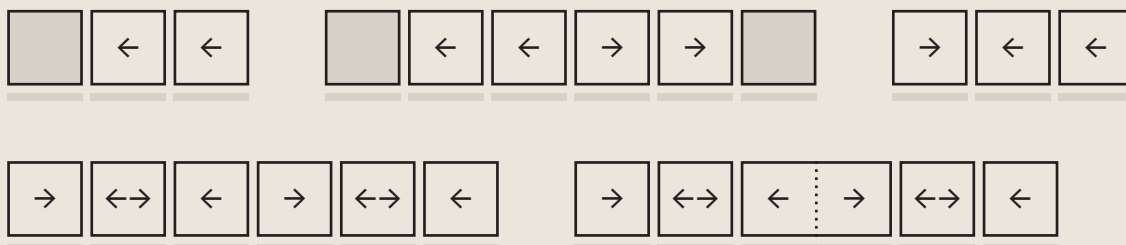
# Sliding Door. Configurations.

Available in a curated range of finishes, colours, and handle profiles, the design language is quietly luxurious—refined, understated, and endlessly customisable. Each door is a singular expression of design intent, precision-engineered for timeless architecture.

## 2 Rails



## 3 Rails





# Fluid Sliding. Architecture.

The Fluid Sliding Door is designed for architects who seek clean lines, expansive views, and a seamless relationship between indoors and out. Its minimal framing and concealed threshold detail integrate smoothly into contemporary and heritage settings alike, delivering clarity and continuity across all elevations.

## **Slim by Design**

At just 20mm, the interlock sightlines allow for uninterrupted views, while the minimal head and base frames reduce visual bulk and maintain architectural rhythm.

## **Flexible Integration**

Available in a wide range of configurations—including corner, pocket, and hidden rail systems—the Fluid Sliding Door offers versatility for both bold statements and subtle transitions within a project.

# Fluid Sliding. Technology.

Built for performance, the Fluid Sliding Door combines precision engineering with best-in-class materials to deliver high-performance glazing in demanding environments.



## Seamless Strength

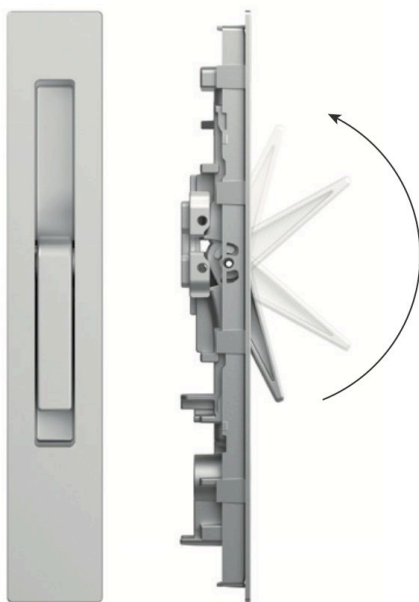
With a glazing capacity up to 30mm and panel sizes up to 3m high and 2.5m wide, each leaf moves with stability and ease. Integrated locking in the coupling ensures discreet functionality, even in multi-panel configurations.

## Tested Excellence

Achieving a thermal coefficient of  $U_w$  1.3 W/m<sup>2</sup>K and sound insulation up to 41 dB, the system meets Class 7A water tightness, Class 4 air tightness, and Class C5 wind resistance. It is fully PAS24 compliant for security and suitable for both residential and commercial applications.

# Fluid Sliding. Design.

With its quiet detailing and refined form, the Fluid Sliding Door complements both restrained and expressive architectural languages. Every component has been designed to reduce clutter and maximise transparency, allowing light and materiality to define the space.



## Custom Motion

Smooth sliding action is achieved even at panel weights up to 320kg, with optional motorisation available for effortless operation. With internal and external locking, it's both elegant and secure.

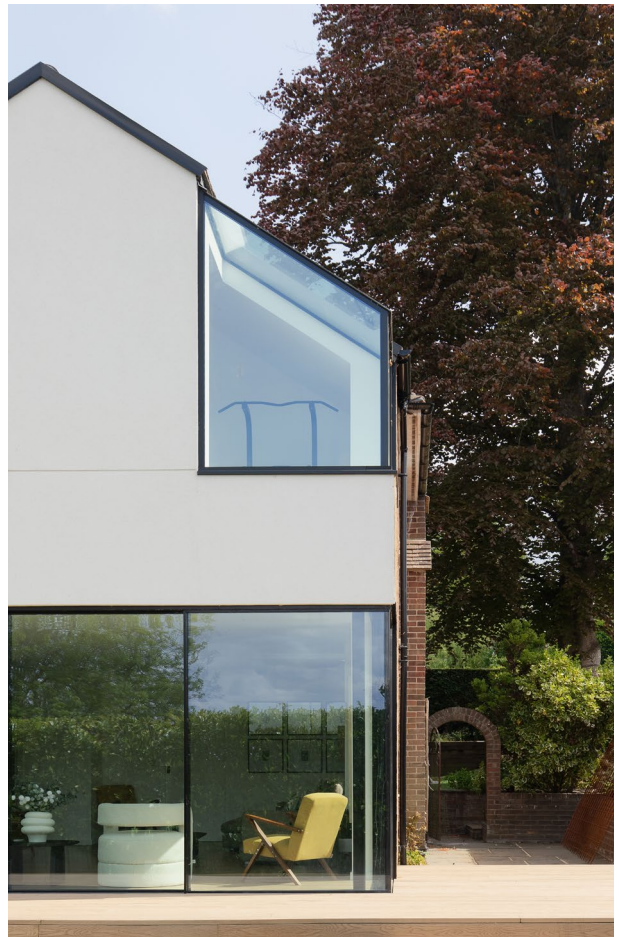


## Visual Lightness, Lasting Impact

Flush tracks, concealed profiles, and integrated locking systems preserve the clarity of the opening, ensuring that the architecture—not the frame—takes focus. Options for RAL colours, anodised finishes, and trickle ventilation allow further tailoring to project context.

## Beulah Walk

A refined residential transformation in South London, where minimal sliding doors, structural glazing, and rooflights come together to create a light-filled, contemporary living space.











### Minty House

A complete refurbishment of a classic Victorian terrace in West Hampstead, including an elegant curved glass bay window, and a sliding door system.











# Sliding Door. Showroom.

By appointment only

Unit 11, Orbital 25 Business Park  
Dwight Road, Watford, WD18 9DA



# Your project. Our passion.

Born from an initial desire to create something unique and extraordinary, taking our deep architectural experience and blending it with passion and technological expertise, our design thinking leads the charge in bespoke architectural glazing.