

HOT SHOT 2023 GAME SETUP

The game will arrive on 2 pallets. Please inspect the pallets for shipping damage and report immediately to the freight company if any damage found.

Tools Needed:

2 -3 ladders (12-15 foot)	9/16" Wrench	5/32" Hex Bit
3 -4 people	7/16" Wrench	# 2 Square bit
Torx T-30 bit	15/16" wrench	# 3 Phillips Bit
	Or	
	Crescent Wrench	

Important:

Portions of this game are heavy, bulky and large. Assembly requires 3-4 people to lift heavy components, and ladders that are tall and strong enough to position components to the top of the game.

Instructions:

Before pallets arrive, clear space in the game room. 20' by 20' or more is recommended. 4-5 hours assembly time per game is typical.

The game will arrive on 2 pallets:

Pallet # 1 contains the front console and hoop.

Pallet # 2 contains the stacked cabinet parts.

- Remove the shrink wrap and cardboard from both pallets.

Pallet # 1 - Remove the cardboard surround, and remove the plastic bag of balls and set aside for later use.

- Remove the hardware kit which contains all of the nuts and bolts for the assembly and bring to game assembly area.

- Remove the bag of game keys and unlock and open the front door.

Pallet # 2 - Remove the foam and laminate (D2), Part #A5LA8400, and set aside for later.

The large back wall wood piece is attached to the side of the pallet.

Important! - One person must hold this while a 2nd person snips the banding strap to release this large back wall piece.

- Remove this back wall (E1) and place on the floor near the final game position as shown.

Note: The game assembly will start with the cabinet on it's back, to be tipped up during the assembly process.



HOT SHOT 2023 GAME SETUP

The next component on the stack is the Ball Gate Platform.

- Remove the wood blocking to release this Ball Gate Platform using a # 2 square bit.
- Remove this Ball Gate Platform and set aside for later use.



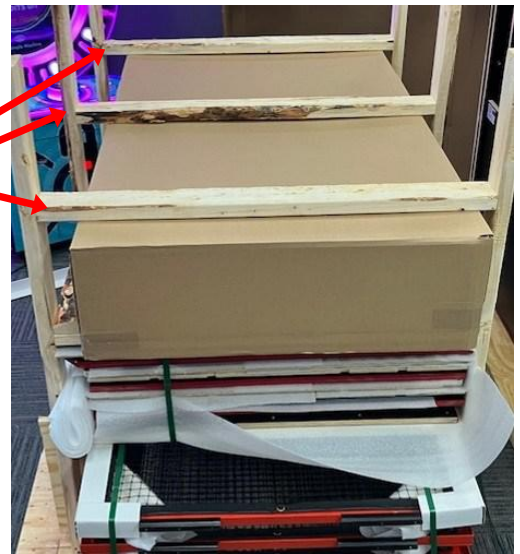
The next component on the stack is the giant heavy box.

- Remove the wood blocking to open this giant heavy box using a # 2 square bit.

The plan is to leave this giant heavy box on the pallet and unload the contents.

The parts that will be used first will be placed near the game assembly area, the other parts will be placed further away to be used later.

- Remove Long Legs (C7) part # A5ME27520 from giant heavy box and place at the bottom of the back wall.



- Remove 4 Ramp Supports (C15), Part # WACA22047, from giant heavy box and place near the assembly area.



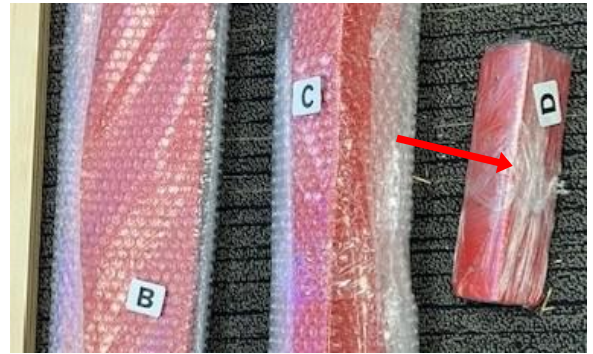
- Remove the 4 Base Plates (C3) part # A5ME22002 from giant heavy box and place near the assembly area.

- Remove the 2 Back Wall Mount Tops (C5) part # A5ME22005 from giant heavy box and place near the assembly area.

- Remove the 3 packages of Leg Assemblies (C8) part # A5ME22008 from giant heavy box and place near the assembly area.



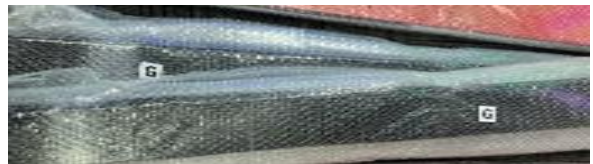
- Remove the 4 Ramp Support Brackets (C10) part # A5ME22006 from giant heavy box and place near the assembly area.



- Remove the Back Wall Splice (C16), Part # WACA22046 from giant heavy box and place near the assembly area.



- Remove the 2 packages of Leg Supports (C6) part # A5ME22009 from giant heavy box and place near the assembly area.



Everything else in the giant heavy box can now be removed and placed a bit further away for later use.

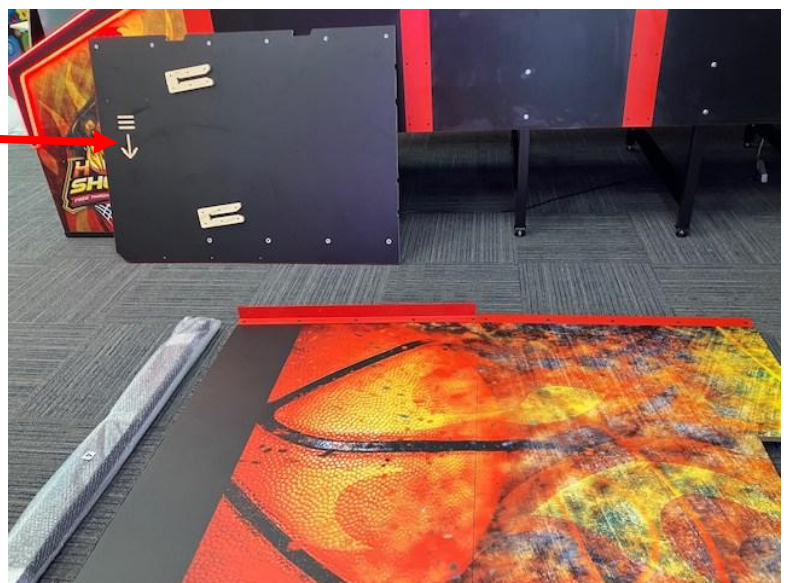
The now giant light box can be removed from the pallet.

- Remove the wood bracing to access the Rear Side Wall using a # 2 square bit.



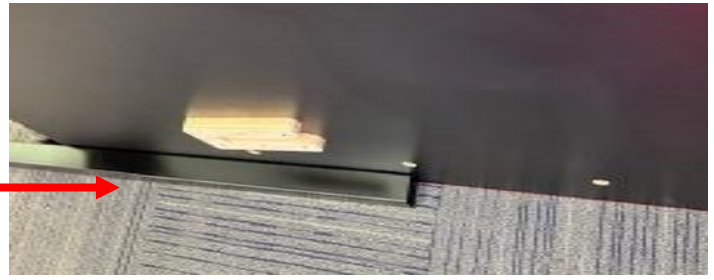
- Remove the Left Side Back Panel (B8), Part # WACA22022, from the pallet and place in the assembly area as shown.

Note: The arrow on the wood point toward the rear of the game.



Install the Long Rear Legs:

- Unwrap the Long Rear Legs (C7) part # A5ME27520 and place one against the Rear Side Wall as shown.



- Locate 3 sets of bolts, split washers, and washers from the hardware kit.



- From the back side, hand thread these 3 sets of bolts, split washers, and washers and tighten using a 9/16" wrench.

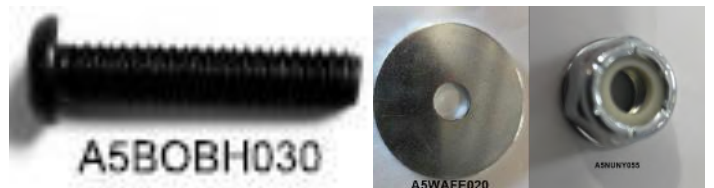


- Slide this Left Side Back Panel under the Back Wall so that the Long Rear Leg is under the red bracket mounted on the back Wall.

Note: Have a 2nd person lift the Back Wall to slide under and help align the 4 holes for the next step.

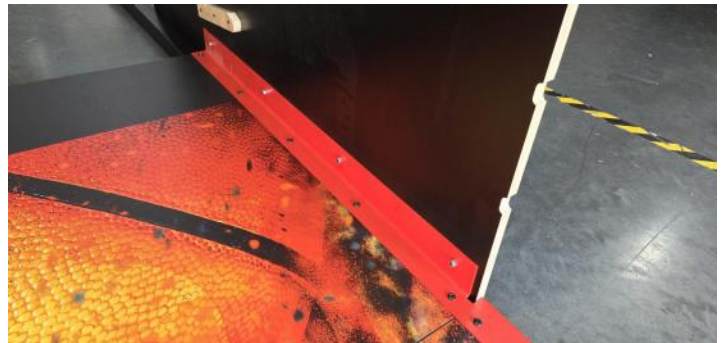


- Locate 4 each of A5BOBH030 bolts, A5WAFE020 washers, and A5NUNY055 nuts from the hardware kit.





- Insert the assembled bolt and washer from the outer wall and secure them in place with the bolts from the inside.



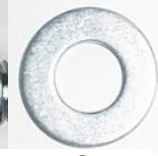
- Remove the Right Side Back Panel (B9), Part # WACA2208 from the pallet stack and place on the right side of the Back Wall as shown.

- Unwrap the last Long Rear Leg (C7) part # A5ME27520 and install into the right side rear side wall using the same process as the other side.

- Use 3 sets of bolts, split washers, and washers from the hardware kit, hand thread into right side wall and tighten using a 9/16" wrench.



A5BOHH090

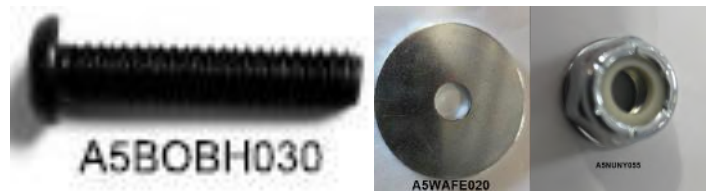


A5WALO010



A5WAFL050

- Locate 4 each of A5BOBH030 bolts, A5WAFE020 washers, and A5NUNY055 nuts from the hardware kit.



- Slide the Right Side Back Panel under the Back Wall, and locate 4 bolts from the hardware kit.

- Hand thread the 4 bolts from the red rail into the Rear Side Wall and tighten using a 5/32 hex bit.



- Locate 2 sets of bolts, split washers, and washers from the hardware kit.



- Unwrap one of the packages of Short Legs (C8) part # A5ME22008 and place one against the left rear side wall as shown.

- Hand thread the bolt, split washer, washers into left side wall and tighten using a 9/16" wrench.



Install a Short Leg (C8) part # A5ME22008 into the right side rear side wall using the same process as the left side.

- Use 2 sets of bolts, split washers, and washers from the hardware kit, hand thread into right side wall and tighten using a 9/16" wrench.

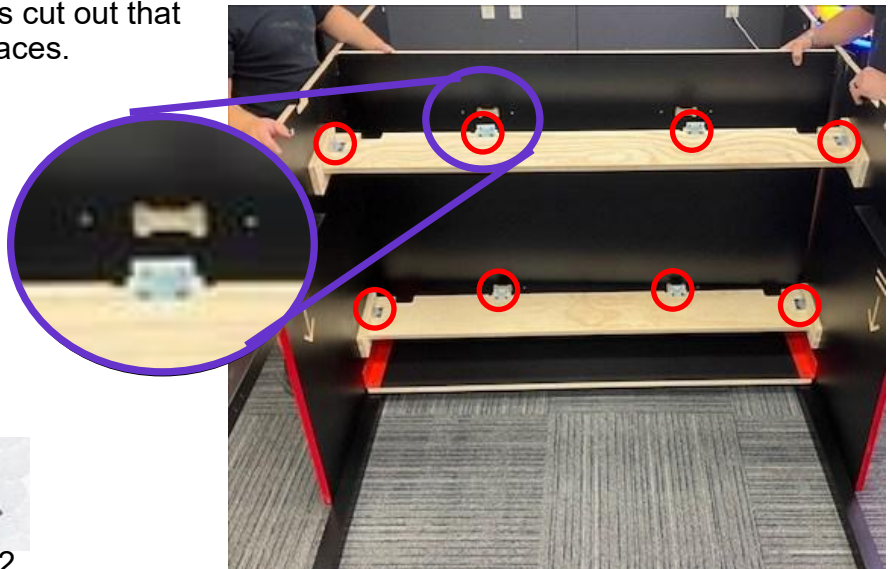


- Locate and slide 2 Ramp Supports (C15), Part # WACA22047 into the slots as shown, but DO NOT screw down yet.



- Remove the next board from the pallet stack, (B7) Part # WACA22037. This board has notches cut out that will align with the tabs on the Ramp Braces.

- Using 2 people, place this board into the cabinet as shown. Ensure the tabs line up with the notches.



- Locate 16 screws from the hardware kit.



- The 2 ramp braces can now be secured using these 16 black screws with a # 2 bit.

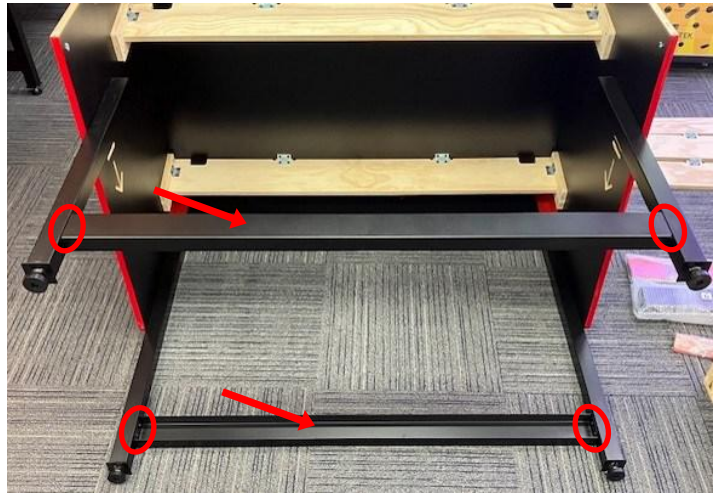
- Locate 2 Leg Supports (C6) part # A5ME22009

- Locate 8 bolts from the hardware kit.



A5SCHH007

- Place the 2 Leg Supports into position as shown and secure using these 8 black bolts using a 5/32 hex bit.



The assembled cabinet can now be tipped up and moved closer to final game room position. However, there will need to be space for a couple ladders behind the cabinet.

- Using 3 - 4 people, carefully tip the cabinet up onto it's feet as shown.

- Slide the cabinet closer to final game position, but leave 4 feet behind the game for ladders and 2 feet away from game next to it.



- Locate 8 of 2" bugle screws (A5SCFH060) from the hardware kit.



A5SCFH060

- Screw the 8 screws from the top down into the support braces into the pilot holes locations using a # 2 bit.



- Unwrap 2 Base Plates (C3) part # A5ME22002



- Locate 6 black bolts from the hardware kit.



A5BOPH312

- Place 1 Base Plate against right side of cabinet as shown and hand thread 6 bolts into the cabinet. Leave these bolts loose for now.



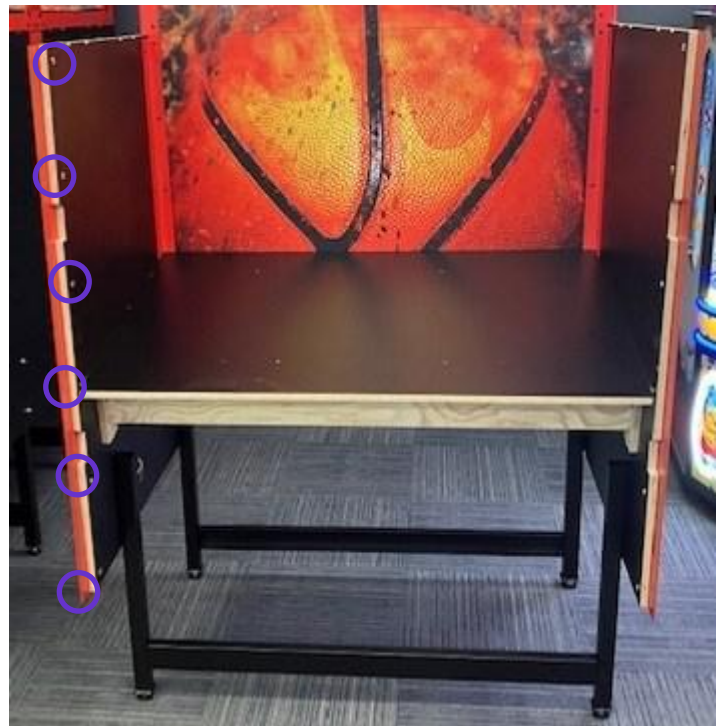
Repeat the process for the left side:

- Locate 6 black bolts from the hardware kit.



A5BOPH312

- Place 1 Base Plate against the left side of cabinet and hand thread 6 bolts into the cabinet. Leave these bolts loose for now.



- Remove the next board, (B5) part # WACA22005, from the pallet stack and place on the floor as shown.

- Locate 2 sets of bolts, split washers, and washers from the hardware kit.



- Unwrap one of the packages of Short Legs (C8) part # A5ME22008 and place one against the right middle side panel as shown.



- Hand thread the bolt, split washer, washers into right side wall and tighten using a 9/16" wrench.

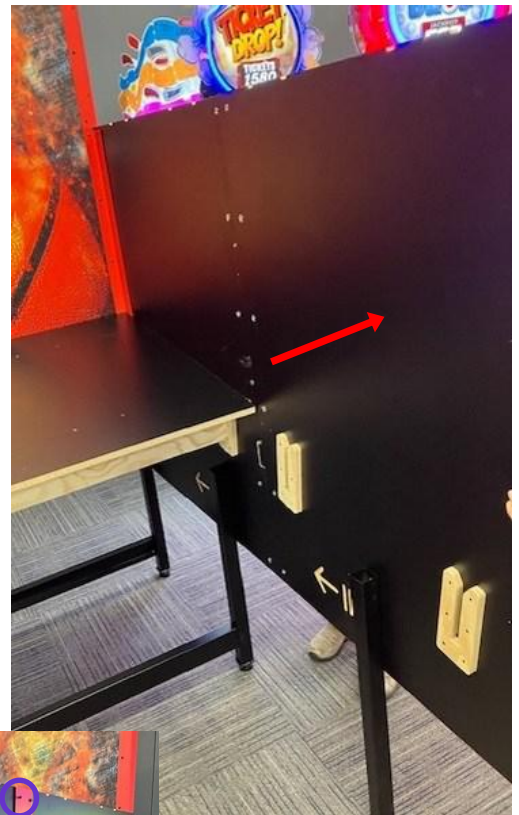
- Tip this right middle wall section up and bring to assembly.

- Locate 6 black bolts from the hardware kit.



- Using 2 people, place the right middle side panel into position as shown.

Note: The sides have interlocking tabs that lock the sides into Place.



- Hand thread the 6 bolts into the holes of the base plate.

- All 12 of these bolts can now be tightened using a # 2 square bit.



Repeat the same process for the left side middle side:

- Remove the next board, (B6) part # WACA22017, from the pallet stack and place on the floor.
- Locate 2 sets of bolts, split washers, and washers from the hardware kit.
- Unwrap one of the Short Legs, (C8) part # A5ME22008, and place one against the left middle side panel.
- Hand thread the bolt, split washer, washers into left side wall and tighten using a 9/16" wrench.
- Tip this left middle side panel up and bring to assembly.
- Locate 6 black bolts from the hardware kit.
- Using 2 people, place the left middle section into position.
- Hand thread the 6 bolts into the holes of the connection plate.
- All 12 of these bolts on the left side can now be tightened using a # 2 square bit.



A5BOHH090



A5WALO010



A5WAFL050



A5BOPH312

The assembly so far:



- Locate 1 Leg Support (C6) part # A5ME22009
- Locate 4 bolts from the hardware kit.



A5SCHH007

- Place the Leg Support into position as shown (It's best to keep the open end toward the back of the game) and secure using these 4 black bolts using a 5/32 hex bit.



- Locate and slide 2 Ramp Supports, (C15) part # WACA22047 into the slots as shown, but DO NOT screw down yet.



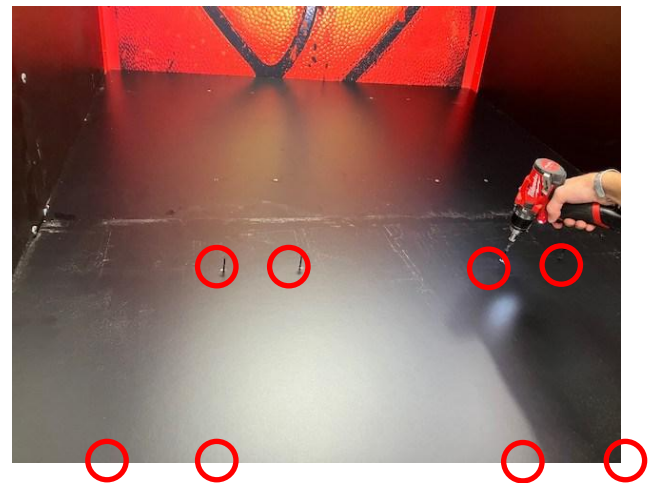
- Remove the next board from the pallet stack, (B4) part # WACA22036. This board has notches cut out that will align with the tabs on the Ramp Braces.

- Using 2 people, place this board into the cabinet as shown. Ensure the tabs line up with the notches.



- Locate 8 of 2" bugle screws (A5SCFH060) from the hardware kit.

- Push the ramp board snug to the rear of the cabinet and screw the 8 screws from the top down into the support braces into the pilot holes locations using a # 2 bit.



- Locate 16 of black 10's screws from the hardware kit.



A5SCPH152

- Carefully crawl under cabinet and secure the 2 ramp braces using these 16 black screws with a # 2 bit.



- Locate and unwrap 2 Floor Supports (C10) part # A5ME22006.

- Locate 8 of black 10's (A5SCPH152) from the hardware kit.



A5SCPH152



- Place 1 of the red metal floor supports under the right side of the cabinet as shown. The bracket will support the ends of the floor boards as they come together.

Note: The gap between the floor boards is normal.

- Install the 8 black 10's (A5SCPH152) using a # 2 square bit.



Repeat the process for the left side of the cabinet

- Locate 8 of black 10's (A5SCPH152) from the hardware kit.
- Place 1 of the red metal floor supports under the left side of the cabinet.
- Install the 8 black 10's (A5SCPH152) using a # 2 square bit.

Install both Side Connector Plates to the middle section:

- Unwrap 2 Base Plates, (C3) part # A5ME22002



- Locate 12 black bolts from the hardware kit.



A5BOPH312

- Place 1 Base Plate against the left side of cabinet as shown and hand thread 6 bolts into the cabinet. Leave these bolts loose for now.

- Place 1 Base Plate against the right side of cabinet as shown and hand thread 6 bolts into the cabinet. Leave these bolts loose for now.



We will now build the front sides. It is the same process as before, noting that the arrows on the wood sides point towards the rear of the cabinet.

- Remove the next board from the pallet stack, (B3) part # WACA22011, and place on the floor.

- Locate 2 sets of bolts, split washers, and washers from the hardware kit.



- Unwrap one of the Short Legs (C8) part # A5ME22008 and place one against the left front side panel.

- Hand thread the bolt, split washer, washers into side wall and tighten using a 9/16" wrench.

- Remove the next board from the pallet stack, (B2) part # WACA22004, and place on the floor.

- Locate 2 sets of bolts, split washers, and washers from the hardware kit.



- Unwrap one of the Short Legs (C8) part # A5ME22008 and place one against the right front side panel.

- Hand thread the bolt, split washer, washers into side panel and tighten using a 9/16" wrench.

- Bring both front side panels to the cabinet.

- Locate 12 black bolts from the hardware kit.



A5BOPH312

- Using 2 people, place one front section into position. Make sure the arrows point toward the rear of the cabinet.

- Hand thread the 6 bolts into the holes of the connection plate.

- Using 2 people, place the other front section into position.



- Hand thread the 6 bolts into the holes of the connection plate.

- All 12 of these bolts on both sides can now be tightened using a # 2 square bit.

- Locate 1 Leg Support (C6) part # A5ME22009

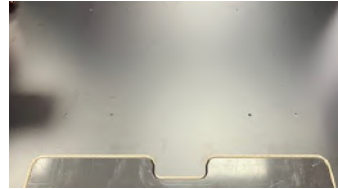


A5SCHH007

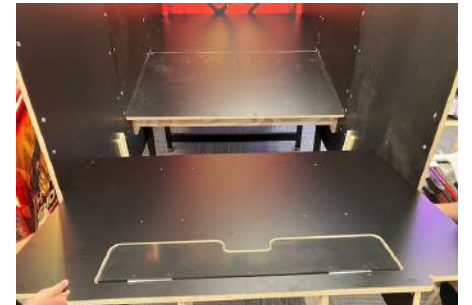


- Locate 4 bolts from the hardware kit.

- Place the Leg Support into position as shown (It's best to keep the open end toward the back of the game) and secure using these 4 black bolts using a 5/32 hex bit.

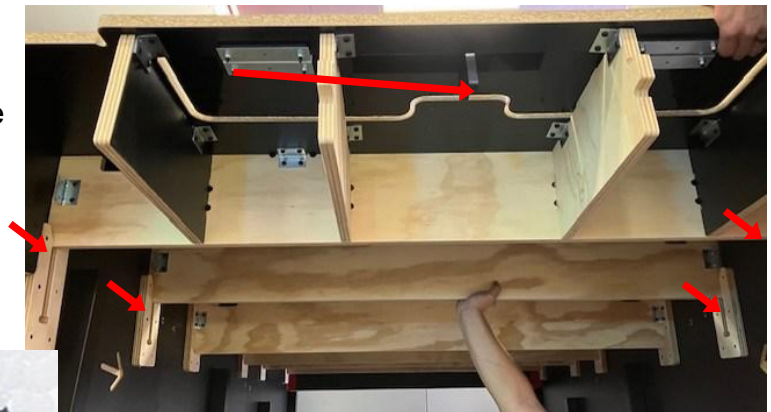


- Locate the Ball Release Panel, (D1), previously removed from the pallet.



- Using 2 people, bring Ball Release Panel into the cabinet as shown, with the ball gate toward the front of the cabinet.

- The wood underneath the Ball Gate Platform must slide into the slots on the side panels and drop fully so that the top is flush with the middle section.

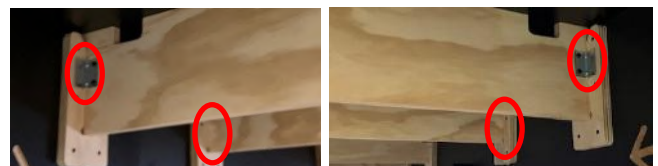


- Locate 8 of black 10's (A5SCPH152) from the hardware kit.



A5SCPH152

- Install the 8 black 10's (A5SCPH152) using a # 2 square bit into the L brackets



- Locate and unwrap 2 Floor Supports (C10) part # A5ME22006.



- Locate 16 of black 10's (A5SCPH152) from the hardware kit.

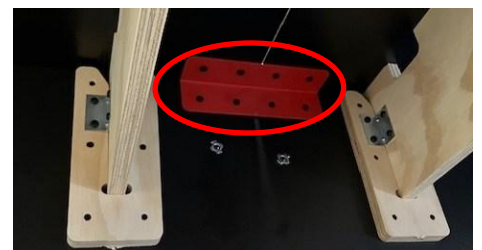


A5SCPH152

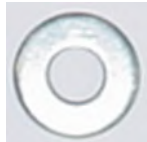
- Place 1 of the red metal floor supports under each side of the cabinet. The bracket will support the ends of the floor boards as they come together.

Note: The gap between the floor boards is normal, it will be covered with flooring.

- Install the 16 black 10's (A5SCPH152) using a # 2 square bit. (8 per bracket)



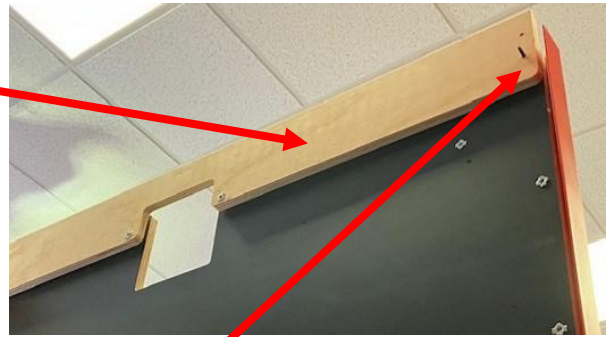
- Locate the Back Wall Splice, (C16), previously removed from the box.
- Install Back Wall Splice at the top back of game over 2 long bolts as shown.
- Locate 2 washers and 2 nylon nuts from the hardware kit. A5WAFL060 and A5NUNY065.



A5WAFL060



A5NUNY065



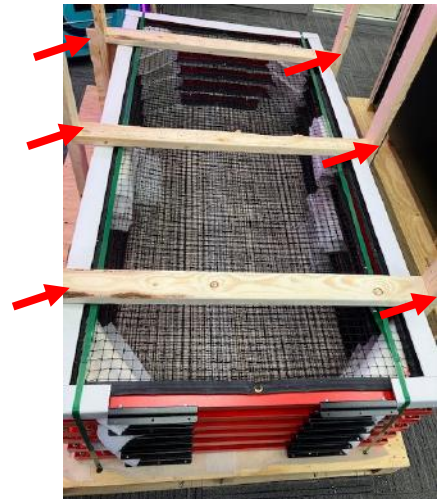
- Install a washer and locknut on top of the long bolts and using a 7/16" wrench - **but do not fully tighten yet**. Leave this board slightly use for easier installation of the Back Wall Panel later.

- Remove the next board from the pallet stack, (B1) part # WACA22023, and set aside for later use.



Install the right side cage to the back of game:

- Remove the wood bracing to access the Side Cages using a # 2 square bit.
- Remove a net section (all 6 are the same) from the pallet stack and bring to the right side of the cabinet.
- Bring one 15 foot ladder to the outside right rear corner of the game.
- Bring a "Little Giant" 8 foot ladder to the inside of the game. We recommend the "Little Giant" because one leg can be extended to accommodate the slant of the bottom of the ball area.



- Locate 3 of bolts (A5SCHH007) and 3 nuts (A5NULO050) from the hardware kit.



A5SCHH007



A5NULO050

- Using 2 people, bring the net section to the right rear of the cabinet.
- Install the 3 bolts (A5SCHH007) from the front side net into the back wall red metal. Have the 2nd person behind the game to thread on the 3 nuts (A5NULO050). Tighten using a 5/32 hex bit.



- Locate 6 of black 10's (A5SCPH152) from the hardware kit.



- Install the 6 black 10's (A5SCPH152) using a # 2 square bit into the L brackets



Install the left side cage to the back way the same way:

- Remove a net section from the pallet stack and bring to the left side of the cabinet.

- Locate 3 of bolts (A5SCHH007) and 3 nuts (A5NULO050) from the hardware kit.

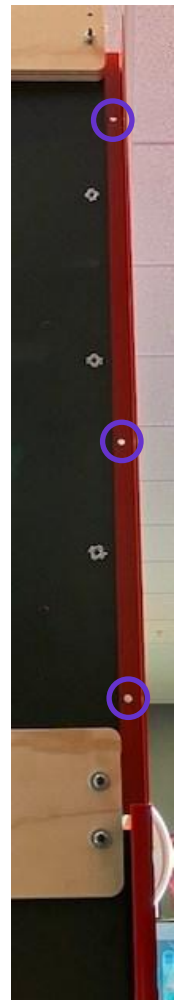


- Using 2 people, bring the net section to the left rear of the cabinet.
- Install the 3 bolts (A5SCHH007) from the front side net into the back wall red metal. Have the 2nd person behind the game to thread on the 3 nuts (A5NULO050). Tighten using a 5/32 hex bit.



- Locate 6 of black 10's (A5SCPH152) from the hardware kit.

- Install the 6 black 10's (A5SCPH152) using a # 2 square bit into the L brackets



Install the left side support to the back of game:

- Locate the 2 Back Wall Supports (C5) part # A5ME22005 from giant heavy box and place near the assembly area.



- Locate 3 of bolts (A5SCHH007) and 3 nuts (A5NULO050) from the hardware kit.



A5SCHH007 A5NULO050

- Install 1 of the interchangeable Back Wall Supports (C5) on the left side of the game, to the net wall - above the back wall as shown using the 3 bolts and nut. Tighten using a 5/32 hex bit.

Install the right side support to the back way the same way:

- Locate 3 of bolts (A5SCHH007) and 3 nuts (A5NULO050) from the hardware kit.



A5SCHH007 A5NULO050

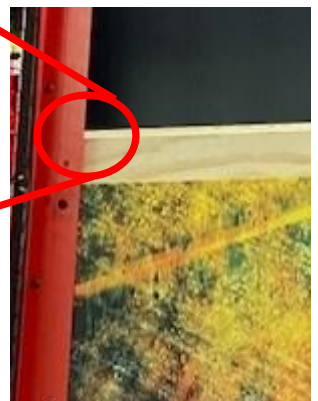
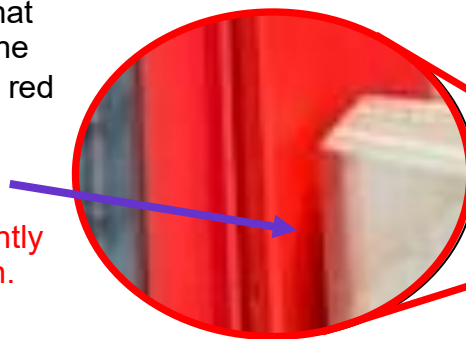
- Install the Back Wall Supports (C5) on the right side of the game, to the net wall - above the back wall as shown using the 3 bolts and nuts. Tighten using a 5/32 hex bit.

The Back Wall Panel previously removed from the pallet stack will now be installed to the back of the game:



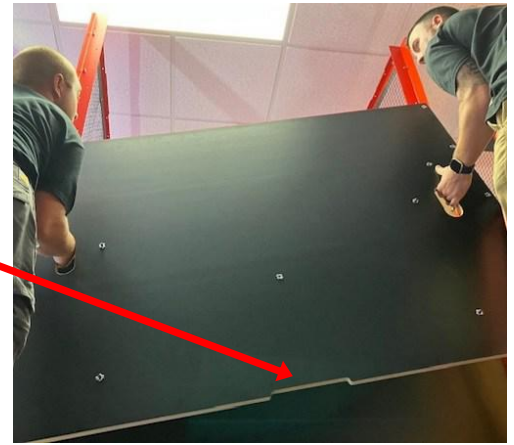
Position the 2 ladders behind the game so that 2 people can carry the Back Wall Panel up the ladders and slide it into the gap between the red metal brackets and the bare wood back wall splice.

Note: Make sure the bare wood piece is slightly loose to allow the Back Wall Panel to slide in.

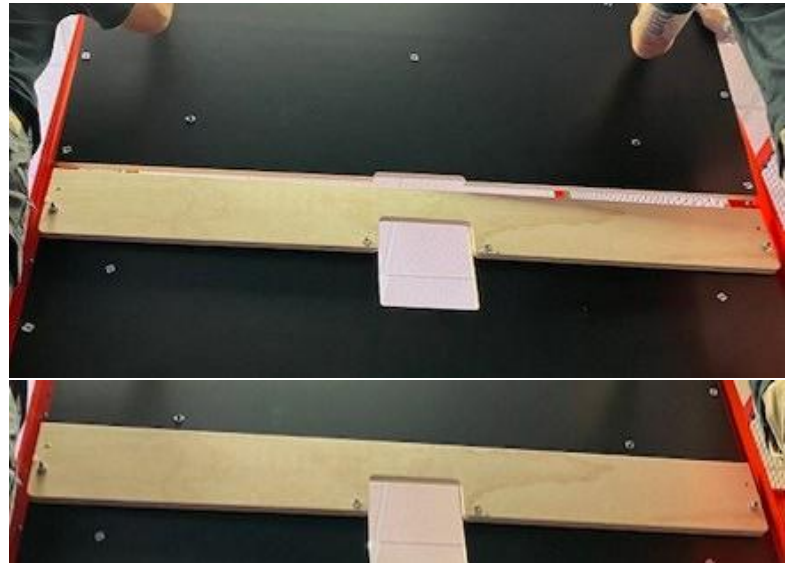


- Using 2 people, carefully carry the Back Wall Panel up the 2 ladders.

Make sure the notch cutout is on the bottom.

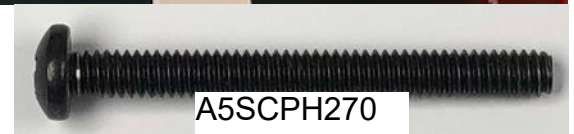


- Slide the bottom of the Back Wall Panel against the red metal rails and lower into the gap between the red metal brackets and the bare wood back wall splice.



Picture of it fully seated into the gap.

- Locate 2 of bolts (A5SCPH270) from the hardware kit.



- Carefully climb inside the cabinet and install 1 of these bolts into the right side of the game, in the bottom hole of the newly installed panel as shown.

Tighten using a # 2 square bit.

- Install the other bolt into the left side of the game, in the bottom hole of the newly installed panel.

Tighten using a # 2 square bit.

- Secure the cross brace with 2 washerS (A5WAFL060) and nylon nuts (A5NUNY055)



- Locate 4 black bolts from the hardware kit.



A5BOPH312

- Carefully climb inside the cabinet and hand thread these 4 bolts into the right side to secure the rear panel as shown. Tighten using a # 2 square bit.

Repeat the process for the left side of the cabinet

- Locate 4 black bolts from the hardware kit.
- Hand thread into the left side to secure the rear panel. Tighten using a # 2 square bit.



2 Roof Panels will now be installed on top of the side nets:

- Locate 2 Roof Slats, (C1) part # WACA22000 boards previously removed from box.
- Locate 8 black bolts from the hardware kit.



A5BOPH312

- Install the 2 Roof Slats on top of side nets.
Ensure T-Nuts are on top of board.
- Hand thread 2 bolts into each side of each Roof Panel.

(It's best to keep the T Molding splice toward the back of the game)



- Tighten all bolts using a # 2 square bit.

Install the middle set of side cages:

- Locate 5 of bolts (A5SCHH007) and 5 nuts (A5NULO050) from the hardware kit.



A5SCHH007



A5NULO050

- Using 2 people, remove a net section from the pallet stack and bring to the right side of the cabinet.

Since the side nets are interchangeable, there will be some extra holes not used. We recommend using 2 bottom holes, 1 middle hole, and 2 top holes for each side net as shown.

- Install the 5 bolts (A5SCHH007) from the middle side net into the rear side net. Thread on the 5 nuts (A5NULO050). Tighten using a 5/32 hex bit.

Secure bottom edge of cage:

- Locate 6 of black 10's (A5SCPH152) from the hardware kit.



A5SCPH152

- Install the 6 black 10's (A5SCPH152) using a # 2 square bit into the L brackets on the bottom of the nets.



Repeat the process for the left side net section:

- Bring a net section to the left side of the cabinet.
- Locate 5 of bolts (A5SCHH007) and 3 nuts (A5NULO050) from the hardware kit.



A5SCHH007



A5NULO050

- Install the 5 bolts (A5SCHH007) from the middle side net into the rear side net. Thread on the 5 nuts (A5NULO050). Tighten using a 5/32 hex bit.

- Locate 6 of black 10's (A5SCPH152) from the hardware kit.
- Install the 6 black 10's (A5SCPH152) using a # 2 square bit into the L brackets on the bottom of the nets.



A5SCPH152

2 Roof Slats will now be installed on top of the side nets:

- Locate 2 Roof Panel boards previously removed from box.
- Locate 8 black bolts from the hardware kit.

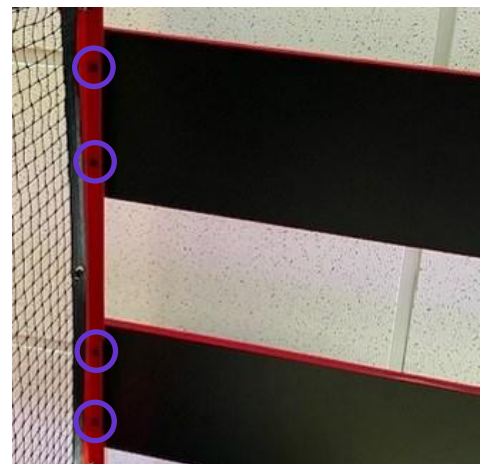
- Install the 2 Roof Slats on top of side nets.

Ensure T-Nuts are on top of board.



A5BOPH312

- Hand thread 2 bolts into each side of each Roof Panel. (It's best to keep the T Molding splice toward the back of the game)
- Tighten all bolts using a # 2 square bit.



Repeat this same process for the front set of side cages:

- Locate 5 of bolts (A5SCHH007) and 5 nuts (A5NULO050) from the hardware kit.



A5SCHH007



A5NULO050

- Using 2 people, remove a net section from the pallet stack and bring to the right side of the cabinet.

Since the side nets are interchangeable, there will be some extra holes not used. We recommend using 2 bottom holes, 1 middle hole, and 2 top holes for each side net as shown.

- Install the 5 bolts (A5SCHH007) from the middle side net into the rear side net. Thread on the 5 nuts (A5NULO050). Tighten using a 5/32 hex bit.

Secure bottom edge of cage:

- Locate 6 of black 10's (A5SCPH152) from the hardware kit.



A5SCPH152

- Install the 6 black 10's (A5SCPH152) using a # 2 square bit into the L brackets on the bottom of the nets.



Repeat the process for the left side net section:

- Bring a net section to the left side of the cabinet.
- Locate 5 of bolts (A5SCHH007) and 5 nuts (A5NULO050) from the hardware kit.



A5SCHH007



A5NULO050

- Install the 5 bolts (A5SCHH007) from the middle side net into the rear side net. Thread on the 5 nuts (A5NULO050). Tighten using a 5/32 hex bit.

- Locate 6 of black 10's (A5SCPH152) from the hardware kit.
- Install the 6 black 10's (A5SCPH152) using a # 2 square bit into the L brackets on the bottom of the nets.



A5SCPH152

1 Roof Panels will now be installed on top of the front nets:

- Locate the last Roof Slat board previously removed from box.
- Locate 4 black bolts from the hardware kit.
- Install the Roof Slat on top of side nets.
Ensure T-Nuts are on top of board.
- Hand thread 2 bolts into each side of each Roof Panel.
(It's best to keep the T Molding splice toward the back of the game)
- Tighten all bolts using a # 2 square bit.



A5BOPH312

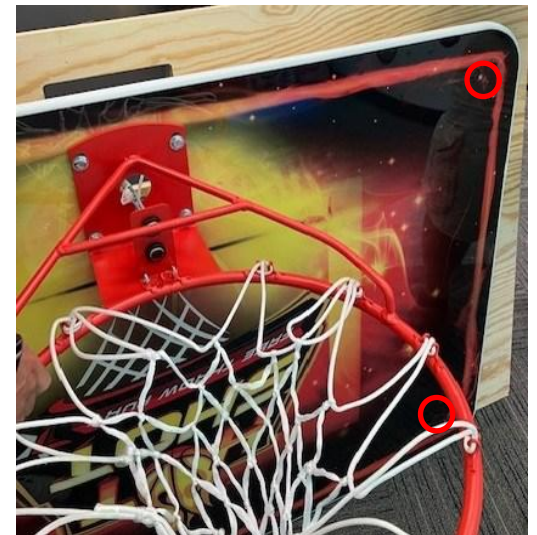


Prepare the Backboard:

- Remove the plywood with Backboard attached from Pallet #1 using # 2 square bit.
- Using 2 or more people, remove a backboard section from the pallet stack and set on the floor.



- Remove the 4 nuts from the plywood using a 7/16" wrench.



- Remove the 4 bolts the front of the Backboard using a # 2 square bit.



- **Important!** From the back side of Backboard, tuck the cables into the hole so they will not be pinched as the Backboard is installed. Make sure they are secure as the Backboard is moved.

Install the Backboard:

The inside back of the backboard has an angle cut in the white plastic that will match up with an angle on the back of the game. This will allow the backboard to be lifted up and hooked into place.

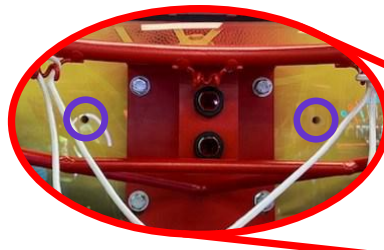


- Using 2 or more people, carefully carry the Backboard inside the cabinet, lift over the plywood angled board and set into position as shown.

- Locate 6 bolts (A5SCPH270) from the hardware kit.



- Install the 6 bolts using a # 2 square bit. 1 bolt in each corner, and 2 near the basket.



Connect the Backboard Cables:

- Locate 6 of Wire Saddles (A5WRSD010) from the hardware kit.

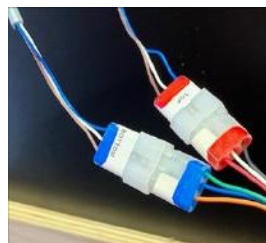


- Locate the bag of 3 long cables from inside the Front Console. (CE22032, CE22033, CE22034)

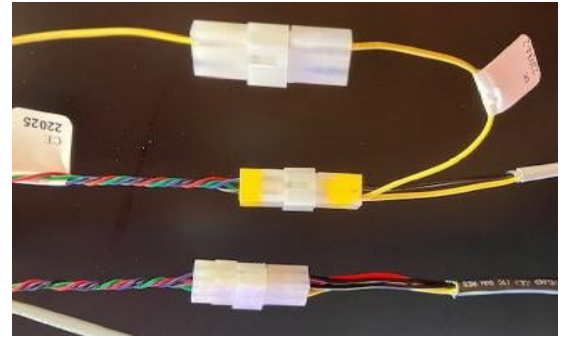
- Uncoil these 3 cables and bring the ends labeled "2nd end" to the top back of the game.

- Plug the CE22032 cable into the hoop sensors SE22000 and SE22001 cables.

Ensure that the red connectors plug together, and the blue connectors plug together.

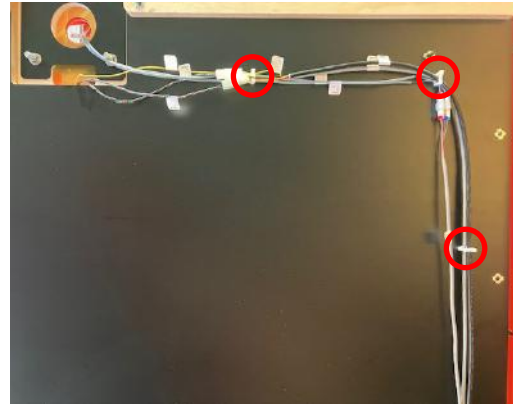


- Plug the 22033 cable into the CE22024 cable.
- Plug the 22034 cable into the CE22024 & CE22025 cables.
The yellow sockets plug together and the single wire connectors plug together.



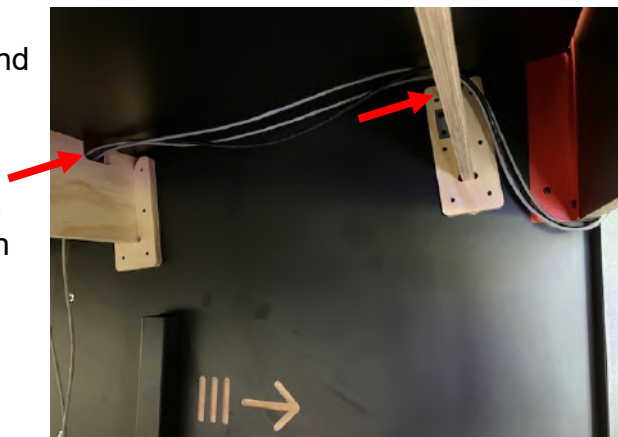
- Install the 6 Wire Saddles into the holes in the back of the cabinet, and route the cables to the right and down the cabinet as shown.

The cables will clip into the Wire Saddles to keep them secure.



- Route the 3 cables up and through the slots in the Ramp Braces.

- Bring the 3 cables to the front of the cabinet through these holes in the Ramp Braces.



- The cabinet can now be pushed back to its final game position.
We recommend that space is left behind the game for future access to game components.

Install the Front Support Bracket:

- Locate the Front Cross Brace, (C2) part # A5ME22000.
- Locate 4 of bolts (A5SCHH007) and 4 nuts (A5NULO050) from the hardware kit.



A5SCHH007 A5NULO050

- Using 2 people, carefully bring the Front Support Bracket to the top front of game.

- Install the 4 bolts (A5SCHH007) from the Front Cross Brace into the front side net. Thread on the 5 nuts (A5NULO050). Tighten using a 5/32 hex bit.



Install Ball Release Assembly:

- Locate the Ball Release Assy inside the front door.
- Locate 5 of bolts (A5BOBH030) from the hardware kit.



A5BOBH030

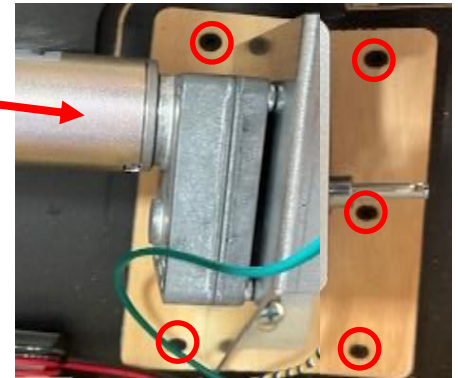
- Place Ball Release Assy in position under the ball gate, install 5 bolts and tighten using a 5/32 hex bit.



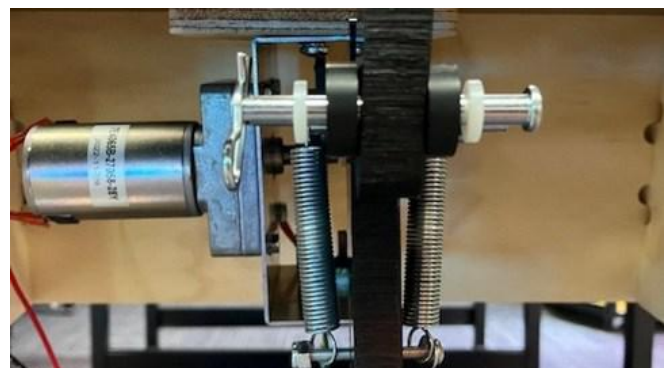
- Remove the cotter pin, plastic spacers, and pin from Ball Release Assy



- Install the same cotter pin, plastic spacers, and pin also including the arm from the ball gate.



The complete assembly.



Install Floor Trim:

- Locate the rolled up foam and laminate floor.
(D2) Part # A5LA8400



- Locate 2 packs of black plastic trim, (C13 & C14) part #'s
WACA22079 & WACA22078



- Locate 30 of 1-1/2" screws
(A5SCFH125) from the
hardware kit.



- Roll out the white foam so that it is flush with the
backboard with equal distance gaps on the left and right
side.

- Roll out the laminate flooring on top of the white foam so
that it is flush with the backboard with equal distance gaps
on the left and right side.



- Place 1 of the longer black plastic trim pieces against the
back wall and secure with 5 of 1-1/2" screws (A5SCFH125)
Do not overtighten - these screws only need to be snug.

- Pull the laminate flooring tight toward the front of the cabinet.

- Place 1 of the shorter black plastic trim pieces against the
rear left side wall and secure with 5 of 1-1/2" screws
(A5SCFH125)

Again -do not overtighten - these screws only need to be snug.

- Place 1 of the shorter black plastic trim pieces against the
rear right side wall and secure with 5 of 1-1/2" screws
(A5SCFH125)

- Place 1 of the shorter black plastic trim pieces against the
front left side wall up against the previously installed piece and
secure with 5 of 1-1/2" screws (A5SCFH125)

- Place 1 of the shorter black plastic trim pieces against the
front right side wall up against the previously installed piece
and secure with 5 of 1-1/2" screws (A5SCFH125)

The last longer black plastic trim piece will hold down the front
edge of the laminate and foam.

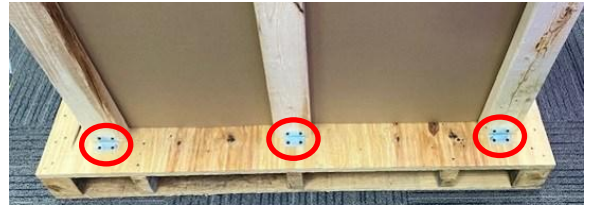
- Line up the black plastic piece so that it is flush against the
edge of the laminate & foam.

- Secure with 5 of 1-1/2" screws (A5SCFH125)

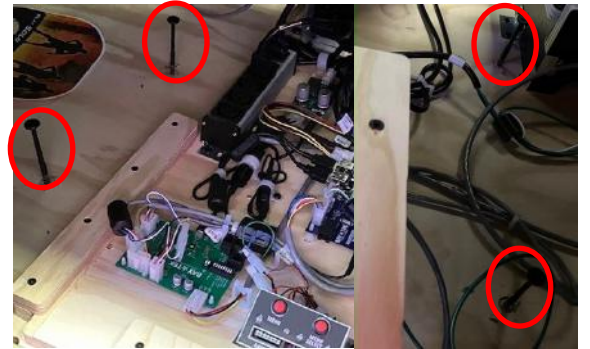


Remove the Front Console from Pallet # 1:

- Remove the 3 of 2X4's on each side of the pallet using a # 2 square bit.



- Remove cardboard surrounding Front Console.



- Remove the 4 bolts holding the Front Console to the pallet using a Torx T-30 bit.



- Remove the 2 LED panels from Front Console and set aside for later use.

- Using 3-4 people, remove the Front Console from the pallet and place near the front of the assembled cabinet.

- Connect the 3 cables from the rear of the cabinet to the cables inside the front console.

CE22032 to CE22004

CE22033 to CE22035

CE22034 to CE22006

- Connect the cable from the Ball Gate cable to the cables inside the front console.

CE22031 to CE22001



Connect the Front Console to the assembled game:

- Locate the 2 Console to Base plates, (C4) part # A5ME22001.



- Locate 12 black bolts from the hardware kit.



A5BOPH312

- Install one Console to Base plate onto the left side of cabinet as shown.

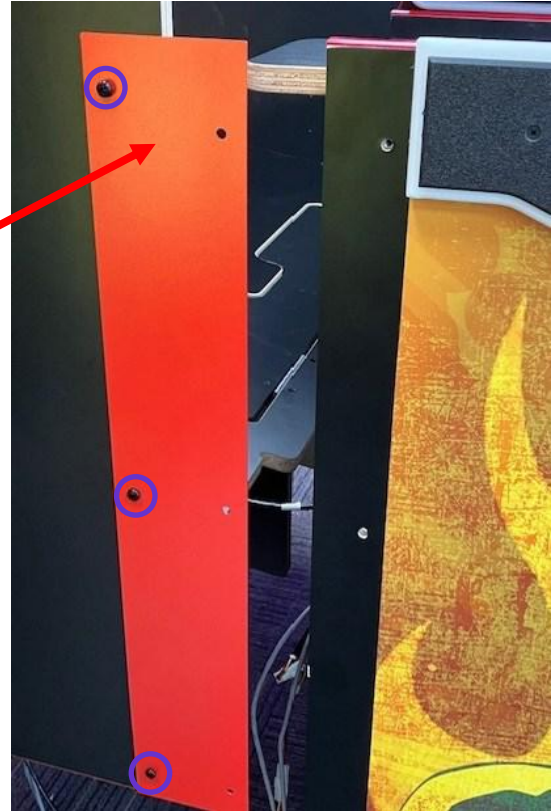
Note: Ensure the off-set holes are to the top, lower hole to the front of the cabinet.

- Hand thread the 6 bolts into the holes of the connection plate. Leave loose for now.

- In a similar way, install the other Console to Base plate onto the right side of cabinet.

Note: Ensure the off-set holes are to the top, lower hole to the front of the cabinet.

- Hand thread the 6 bolts into the holes of the connection plate. Leave loose for now.

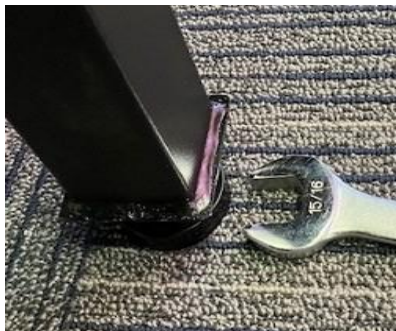


- Push the front cabinet up tight to the rear cabinet assembly. Ensure all cables are clear and do not get pinched.

Note: there are tabs under the cabinet that need to mesh together



If these tabs are too tight, the rear cabinet can be raised by adjusting the leg levers with a 15/16" wrench.



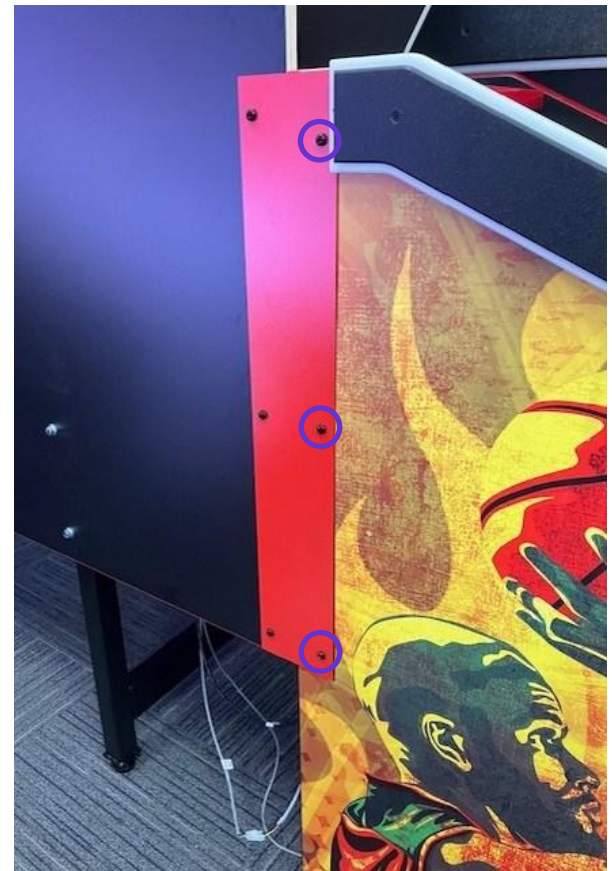
- Once again, locate 12 black bolts from the hardware kit.



A5BOPH312

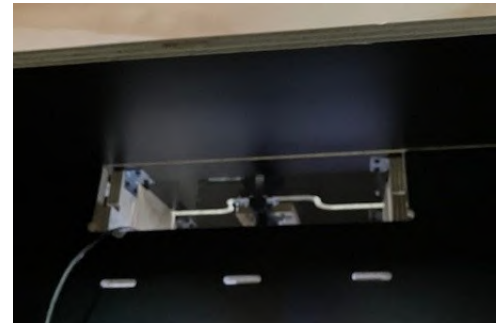
- Hand thread the 6 bolts into the remaining holes of the connection plates on both sides of the cabinet..

- After all 12 bolts have been started, tighten all bolts with a # 2 square bit.



- Connect the Ball Gate cable to the cable from inside the front cabinet.

CE22031 to 22001



- On the left side of the cabinet, tuck the 3 cables up and over wood toward front console.



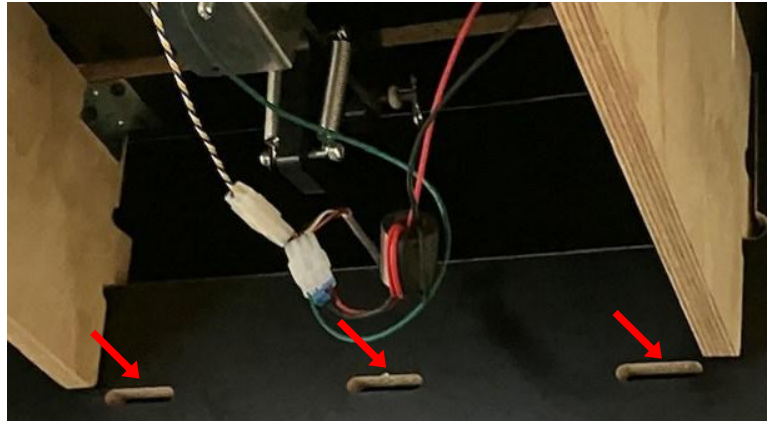
Install Ball Gate Cover:

- Locate black plastic ball gate cover, (C12) Part \$ WACA22076

- Locate 11 of black 10's (A5SCPH152) from the hardware kit.



- Install the black plastic gate cover by sliding the 3 notches into the notches in the cabinet. Slide the cover forward and install the 11 screws (A5SCPH152) into the holes using a # 2 square bit.



Install Ball Deflectors

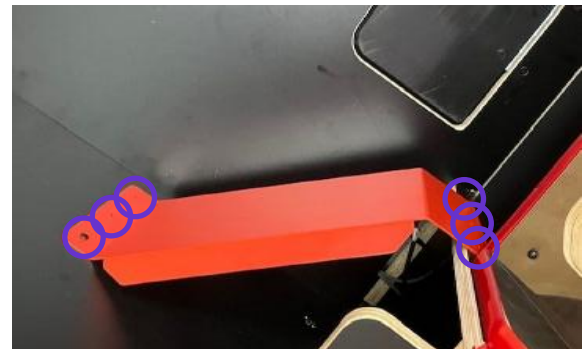
- Locate 2 of red metal Ball Deflectors, (C9) part # A5ME22007

- Locate 6 of black 10's (A5SCPH152) from the hardware kit.



- Install 1 Ball Deflector on the left side of the cabinet as shown. The short mounting flange to the rear of cabinet, the long mounting flange to the front of the cabinet.

- Secure with 6 black 10's (A5SCPH152) using a # 2 square bit.



Repeat the process for the right side:

- Locate 6 of black 10's (A5SCPH152) from the hardware kit.

- Install 1 Ball Deflector on the right side of the cabinet as shown. The short mounting flange to the rear of cabinet, the long mounting flange to the front of the cabinet.

- Secure with 6 black 10's (A5SCPH152) using a # 2 square bit.



Install the 2 LED panels:

- Locate left side LED Panel assembly.

- Locate 2 of bolts (A5SCHH007) and 2 nuts (A5NULO050) from the hardware kit.



A5SCHH007



A5NULO050

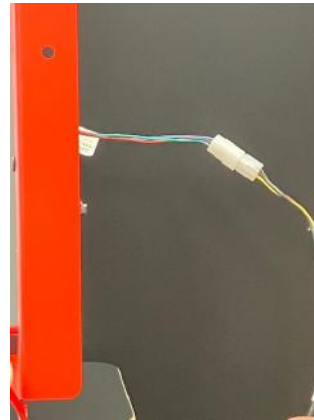
- Locate 5 black bolts (A5BOPH312) from the hardware kit.



A5BOPH312

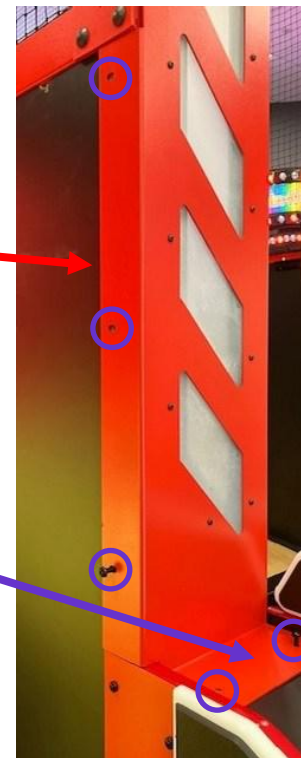
- Bring the left side LED Panel up onto the left side of the front console.

- Plug in the LED cable to the main cabinet harness. CE22039 to CE22037



- Install 3 black bolts (A5BOPH312) into the side holes. Tighten using a # 2 square bit.

- Install 2 black bolts (A5BOPH312) into the bottom mounting flange. Tighten using a # 2 square bit.



- Install 2 of bolts (A5SCHH007) into the 2 top holes in the left side LED panel.

- Install 2 nuts (A5NULO050) onto the back side of these 2 bolts.

- Tighten using a 5/32 hex bit.



Repeat the process for the right side LED panel:

- Locate 2 of bolts (A5SCHH007) and 2 nuts (A5NULO050) from the hardware kit.



A5SCHH007



A5NULO050

- Locate 5 black bolts (A5BOPH312) from the hardware kit.



A5BOPH312

- Bring the right side LED Panel up onto the right side of the front console.

- Plug in the LED cable to the main cabinet harness. CE22039 to CE22037

- Install 3 black bolts (A5BOPH312) into the side holes. Tighten using a # 2 square bit.

- Install 2 black bolts (A5BOPH312) into the bottom mounting flange. Tighten using a # 2 square bit.

- Install 2 of bolts (A5SCHH007) and 2 nuts (A5NULO050) into the 2 top holes in the left side LED panel. Tighten using a 5/32 hex bit.

Install final red metal Ball Guard:

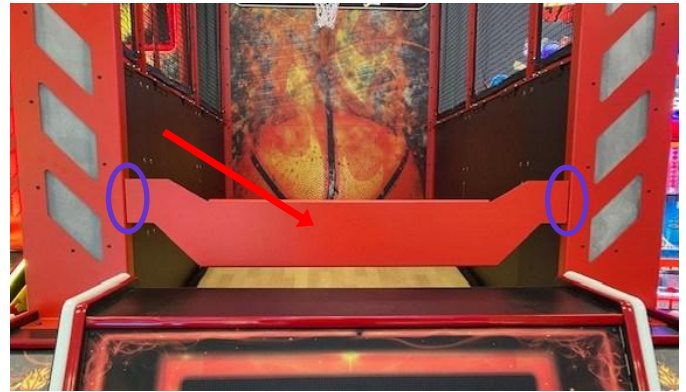
- Locate the Lower Front Console Brace, (C11) part # A5ME22017 and bring to game and place as shown.

- Locate 4 of bolts (A5SCHH007) and 4 nuts (A5NULO050) from the hardware kit.



A5SCHH007 A5NULO050

- Install 2 of bolts (A5SCHH007) and 2 nuts (A5NULO050) into the left side, and install 2 of bolts (A5SCHH007) and 2 nuts (A5NULO050) into the right side. Tighten using a 5/32 hex bit.



The game build is now complete!

- Locate the power cord (A5CORD29). It will come out from the right back of front console. Remove the 7 screws using a # 2 square bit to access the line filter socket which the power cord will plug into.

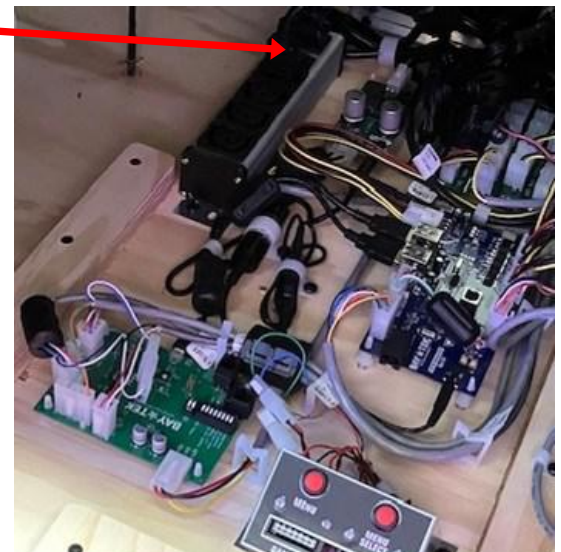
- The power cord should then be plugged into the wall socket.

- Open the front door of the game and flip the rocker switch on the power strip to power on the game.



The game is now set up and ready to play!

Enter the menu to adjust settings to your specific location.
Price per play / Ticket Payout / etc..



If your lucky enough to have 2 games, go to the beginning and start over.

If you also have a Divider Kit, the games should be left about 18 inches apart to provide room for the kit to be installed. Assembly Instructions for the Divider Kit will be included in the kit.