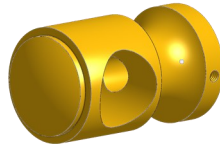


CAFÉ ROD - CLIPPER BRACKET



STYLE	FIXING	POLE DIAMETER	11mm	16mm	19mm
Clipper Bracket	Face	Bracket Height	31mm	43mm	-
		Ring Diameter	MR20	MR20	-
		Top of Pole to Eye	30mm	30mm	-
		Projection to Centre	20mm	27mm	-
		Max Bracket Spacing	120cm	120cm	-