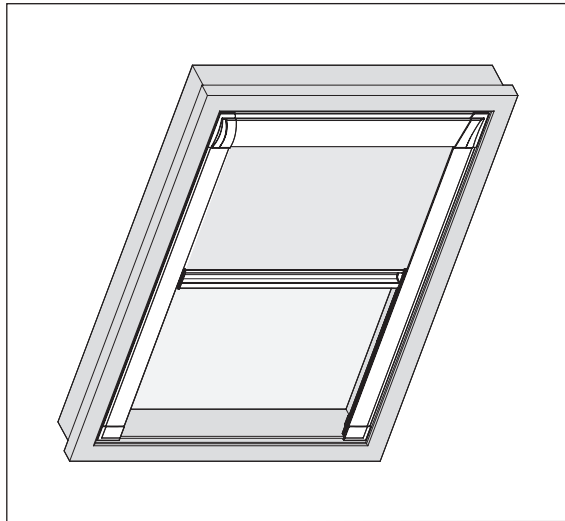


Montageanleitung Rollo

Assembly instruction Roller blind
Manuel store Enrouleur
Istruzioni di montaggio Tende a rullo

DFA

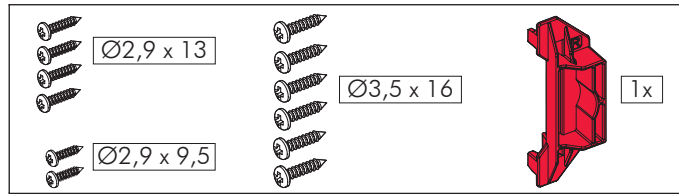


Bitte lesen Sie die nachfolgenden Hinweise sorgfältig vor der Montage und beachten Sie die Montagereihenfolge.

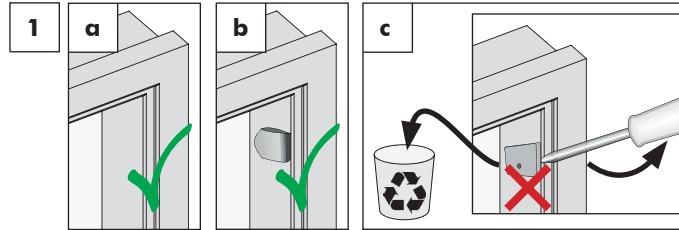
Please read the following advices prior to assembly and note the order of assembly.

Veillez svp bien lire les instructions avant le montage et faites attention à l'ordre d'installation.

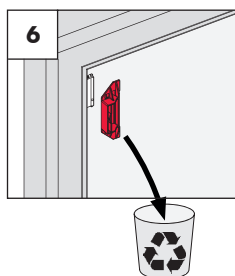
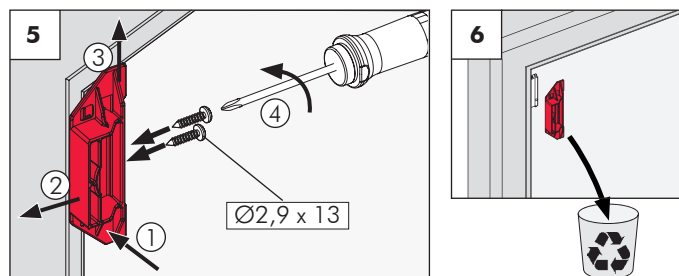
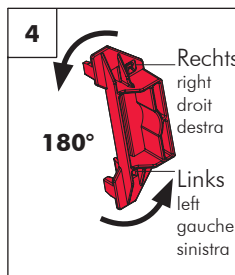
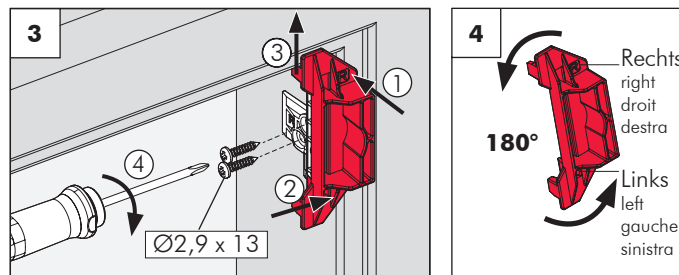
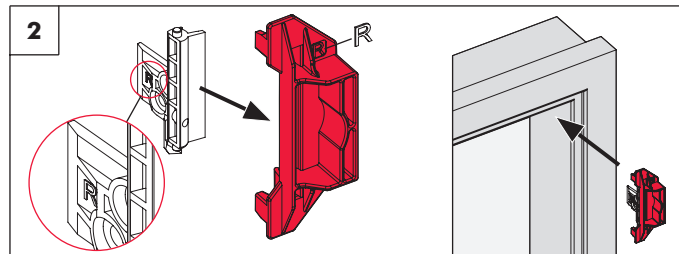
Vi invitiamo a prendere visione delle seguenti informazioni prima dell'installazione, nonchè di seguire l'ordine delle operazioni indicate.



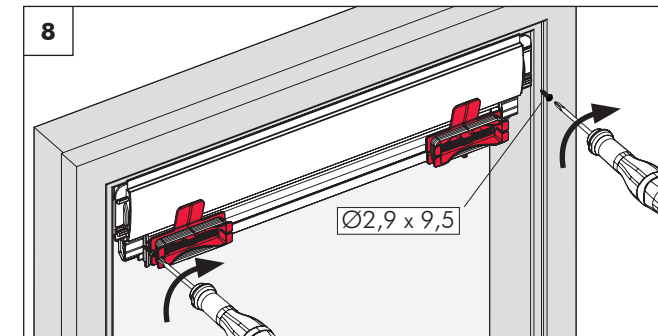
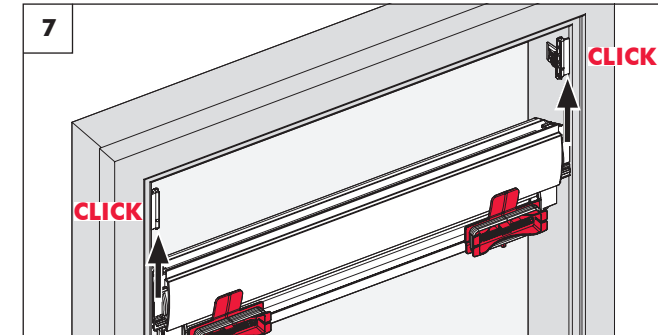
Vorbereitung nur bei Velux / Assembly preparation /
Préparation du montage / Preparazione



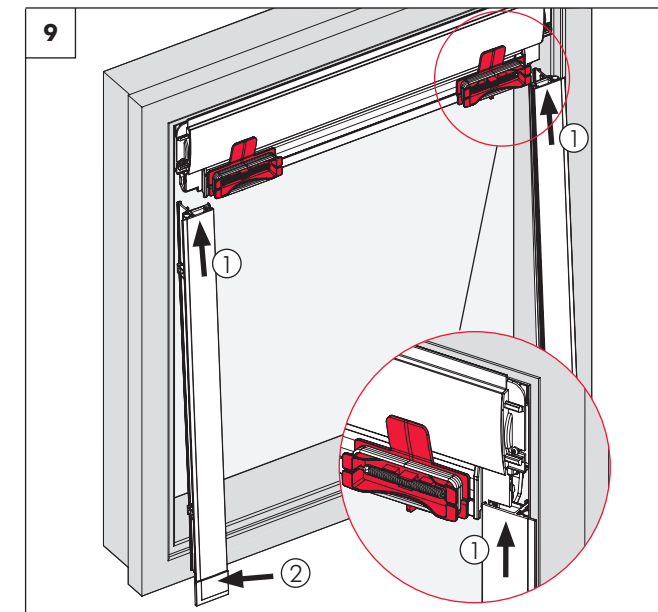
Träger oben rechts + links mit Montagehilfe montieren
Support-Mounting / Support-Montage / Supporto-Montaggio



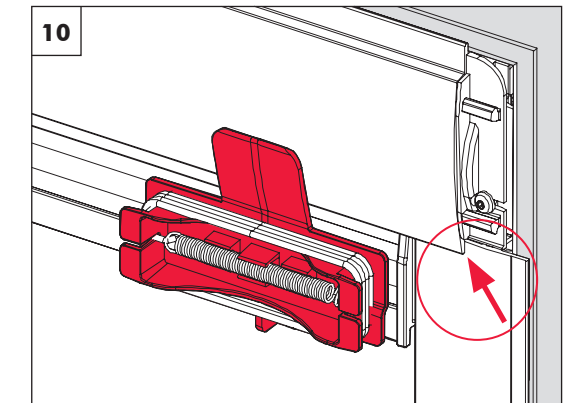
Kassette aufchieben / Cassette installation /
Montage la cassette / Montaggio del cassonetto



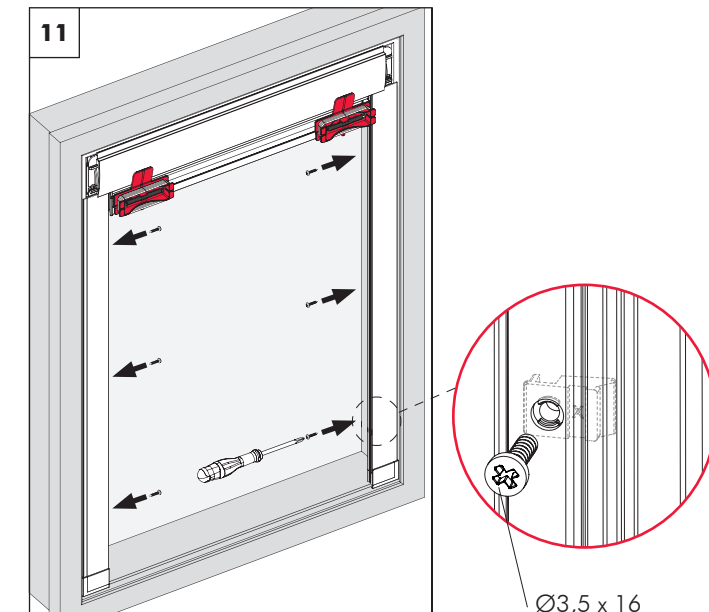
Führungsschienen einsetzen



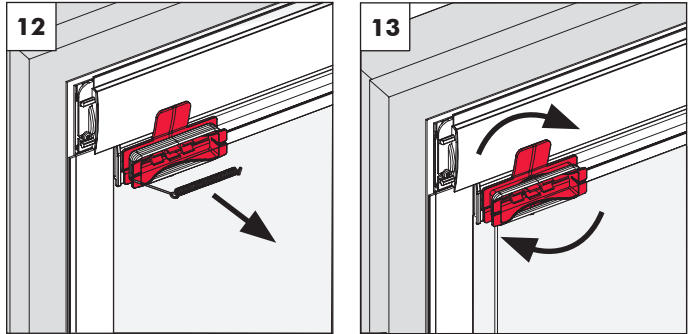
Führungsschienen UNTER Frontblende schieben



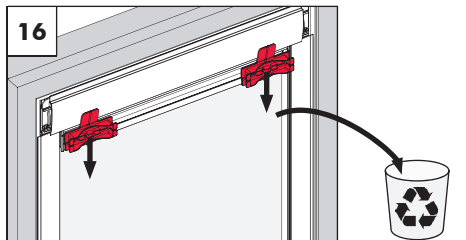
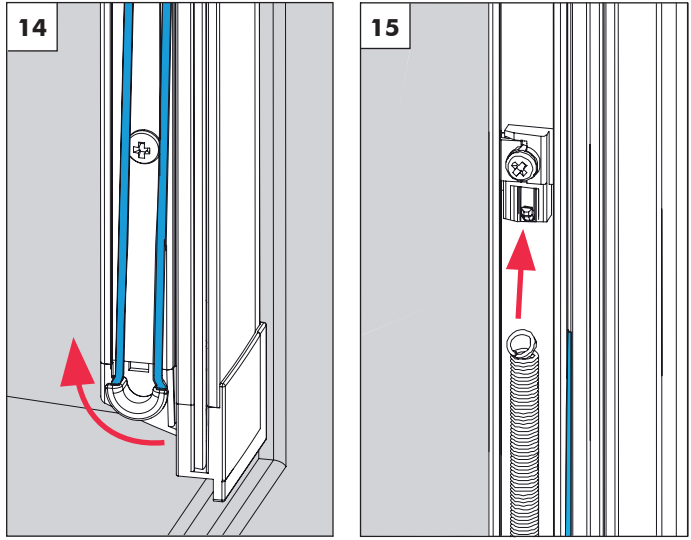
Führungsschienen anschrauben



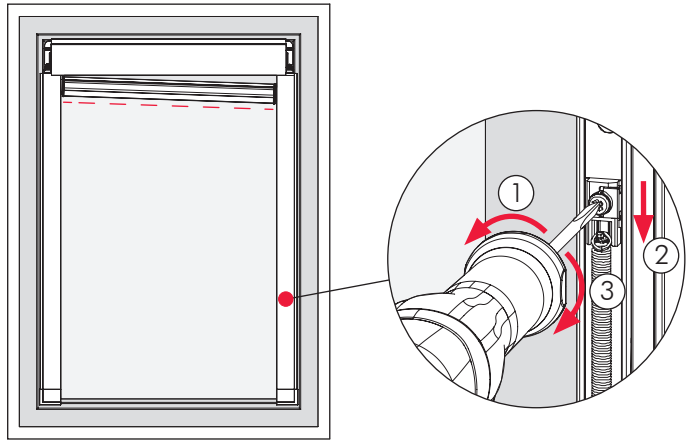
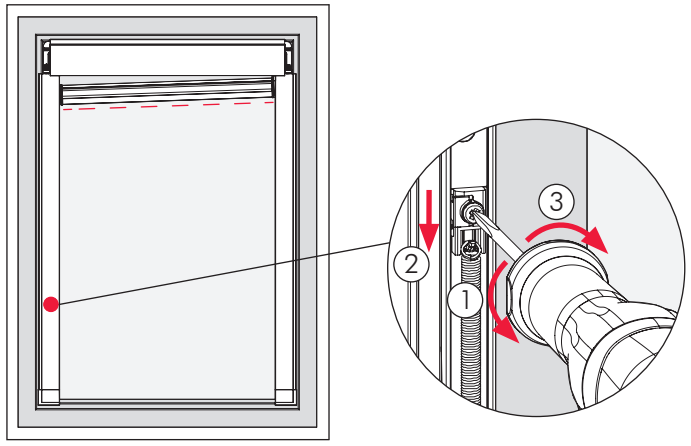
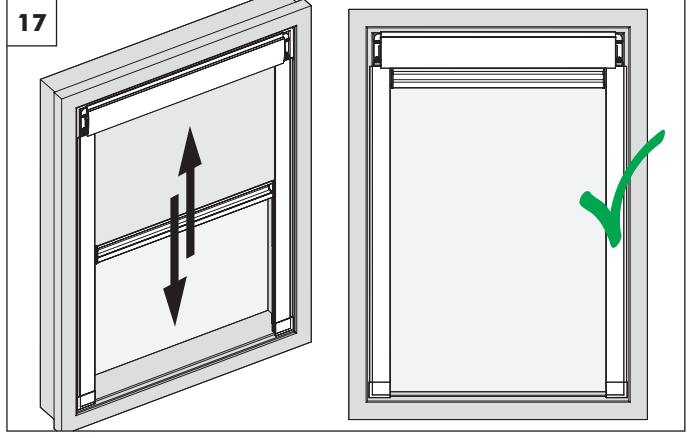
Schnur von Kassette lösen



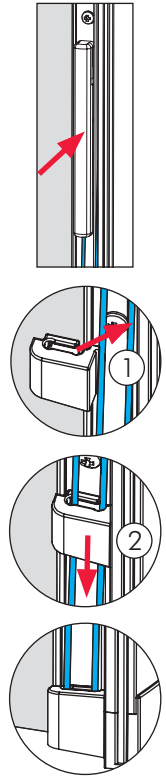
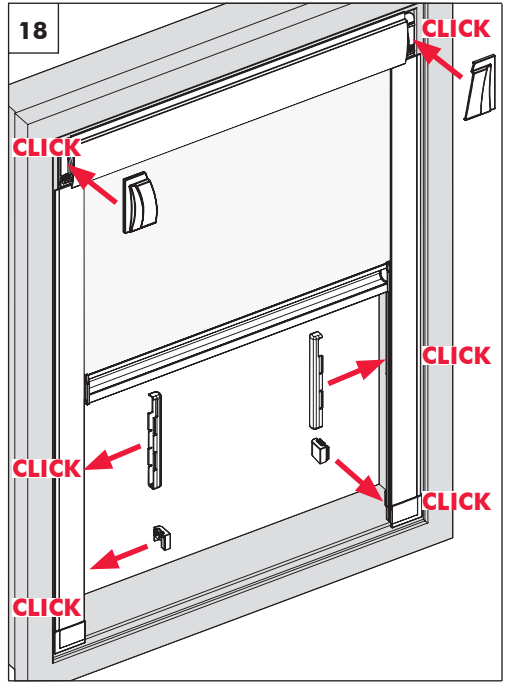
Schnur einspannen (muss frei liegen, nicht in Schiene)



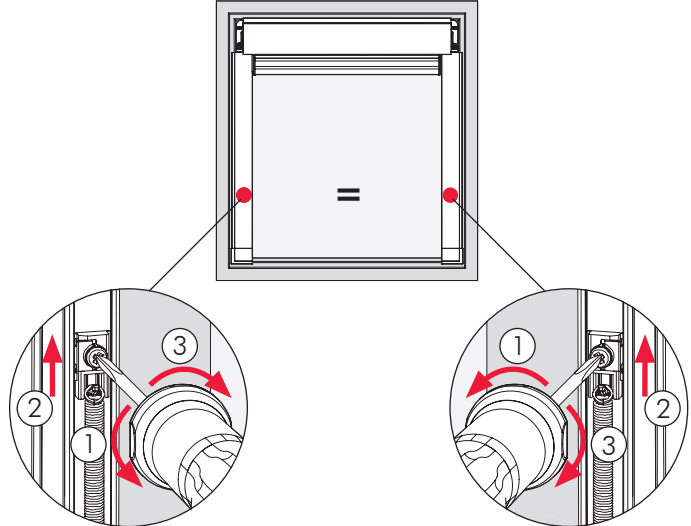
**Ausrichten des Griffprofils / Alignment of handle profile /
Alignement de la barre de charge / Allineare il Profilo comando**



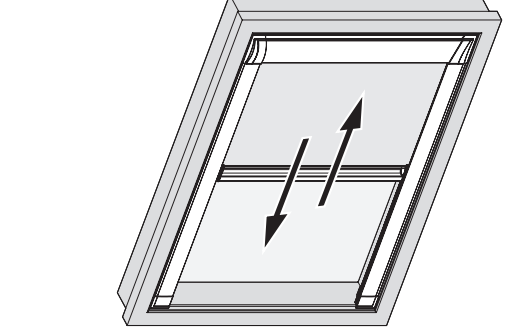
**Endkappen aufsetzen / Mounting - End caps
Montage - Caches d'extrémité
Montaggio - Tappi terminali**



**Nachspannen
Retension / Réajustement / Fissaggio
(Fehler: Rollobehang bleibt nicht in Position)
problem: fabric does not stay in position
Défaut : le tissu du store ne reste pas en position
Errore: il rullo non rimane in posizione corretta!**



**Bedienung
Operation / Commande / Comando**



**Fenster öffnen / when opening of the window /
si la fenêtre est ouverte / Finestra aperta
Rollobehang muss vollständig in der Kassette sein!
Fabric needs to be in the cassette completely!
Le tissu du store doit être complètement dans la cassette !
Il rullo deve entrare completamente nel cassonetto!**

