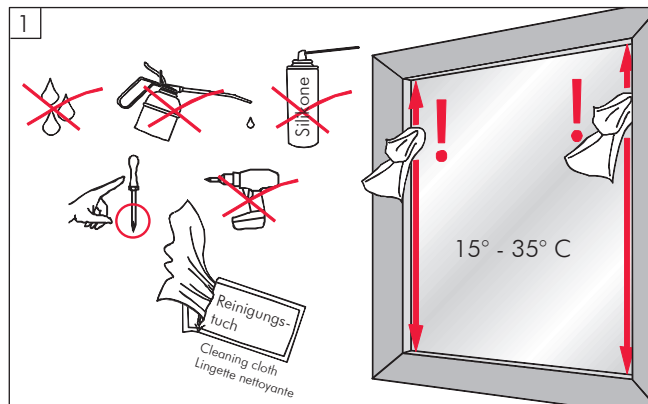
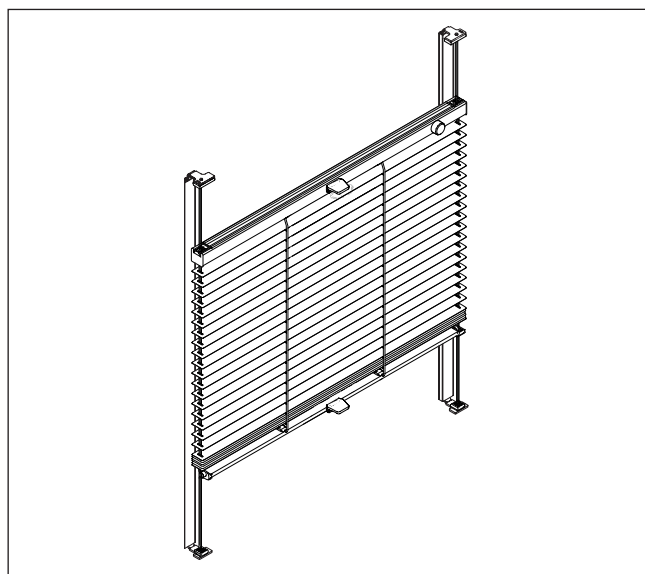
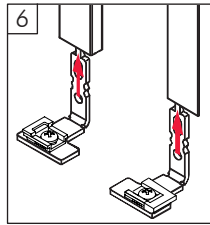
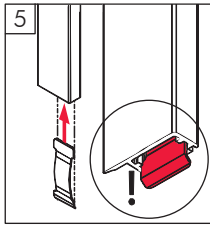
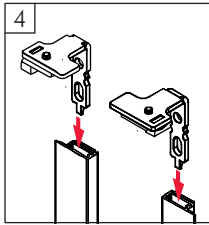
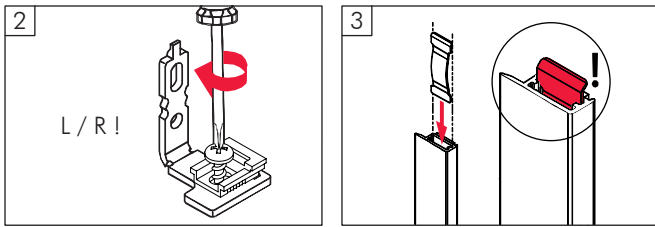


# Montageanleitung Klebekit

Assembly instructions bonding kit  
Instructions de montage kit adhésif

## JF1 / JF2

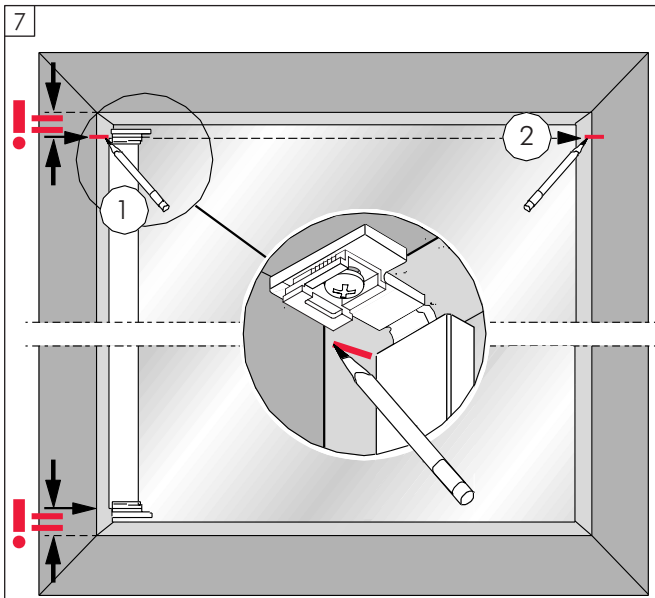




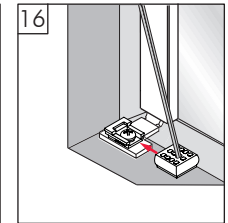
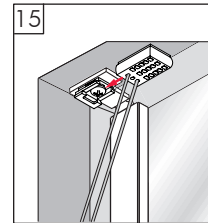
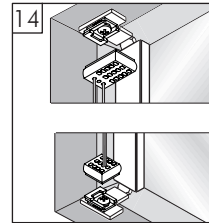
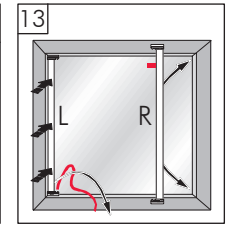
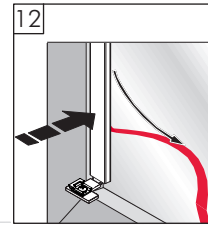
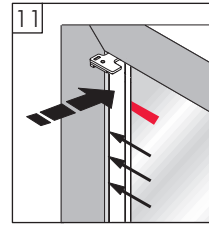
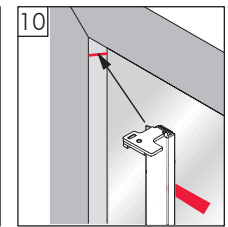
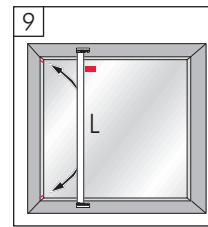
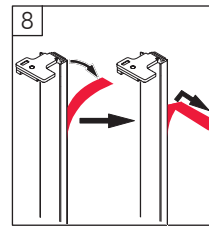
- ACHTUNG:**
- Reinigungstuch verwenden!
  - Montageposition vor Entfernen des Schutzfilms festlegen!
  - Nur einmalige Veklebung möglich!

- ATTENTION:**
- Use cleaning cloth!
  - Determine the assembly position before removing the protective film!
  - Only unique vondung possible!

- ATTENTION:**
- Utilisez un chiffon de nettoyage!
  - Déterminez la position de montage avant de retirer le film de protection!
  - A coller une seule fois!



**Gleicher Abstand • Same distance • Même distance**



### Wichtig!

Luft einschüsse innerhalb der Klebefläche stellen keinen Reklamationsgrund dar, solange die Funktion des Profils nicht beeinträchtigt wird.

Dieses Produkt ist ein nach Ihren Wünschen angefertigtes Unikat. Pflegehinweise erhalten Sie bei Ihrem Fachhändler.

### Important!

Entrapped air within the adhesive area does not constitute a reason for complaint as long as the function of the rail is not affected.

This product is one of a kind, manufactured according to your requirements. You will get care instructions from your specialist retailer.

### Important!

Les bulles d'air à l'intérieur de la surface adhésive ne constituent aucun cas un motif de réclamation dans la mesure où cela n'altère pas le fonctionnement du profilé.

Ce produit est une pièce unique, réalisée selon vos Souhaits. Vous recevrez les conseils d'entretien de votre distributeur.