

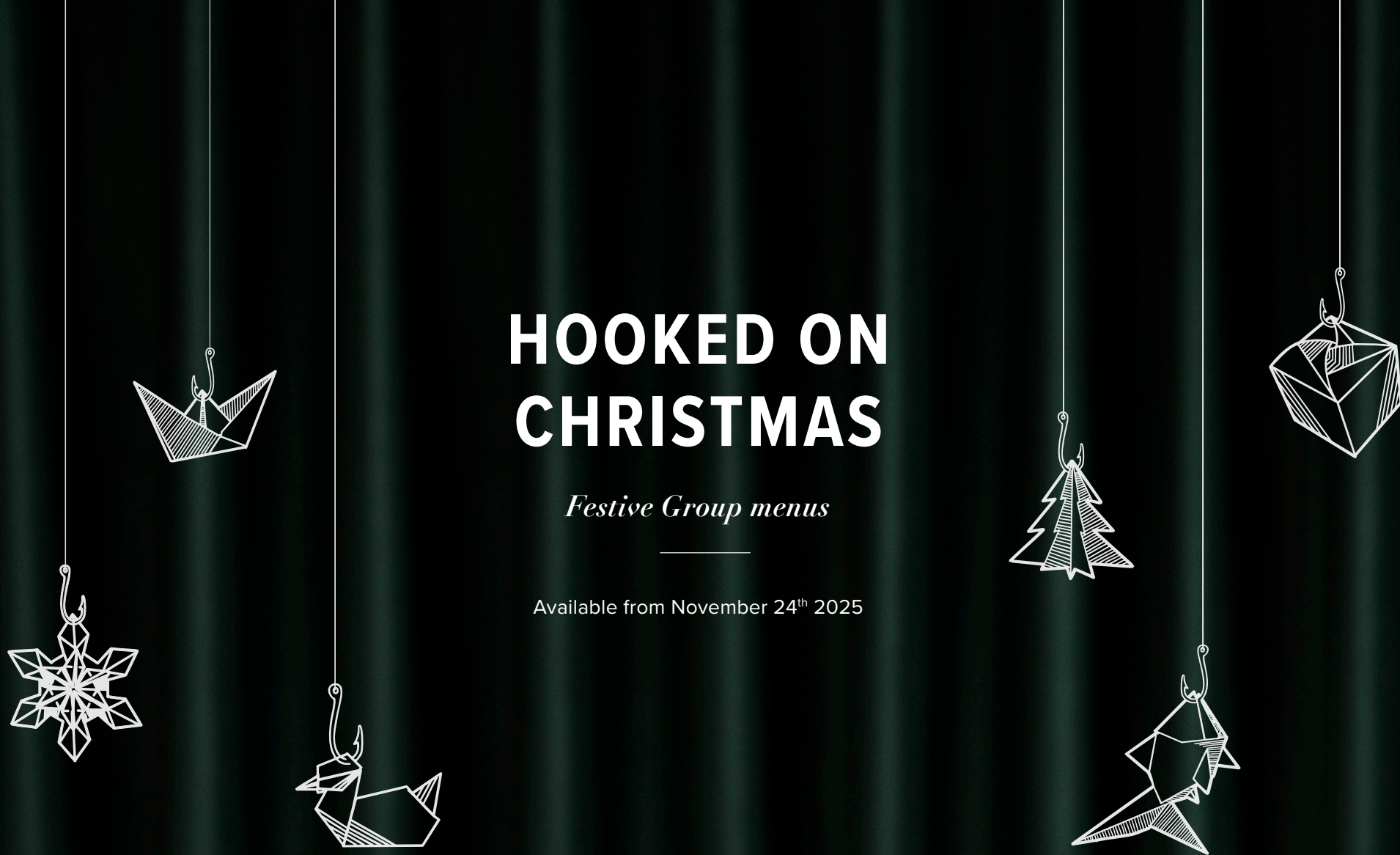
HOOKED ON CHRISTMAS

Festive Group menus

Available from November 24th 2025



STICKS | N | SUSHI





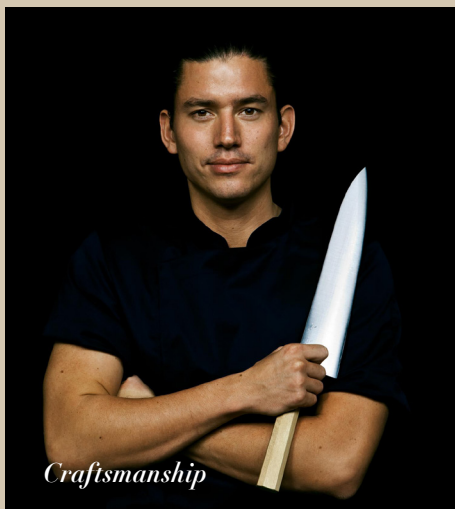
CONTENTS



Feeling Festive?	4
Menu: Yuki	5
Menu: Touya	6
Menu: Evergreen	7
Dessert: Never Enough	8
Kampai	9
Our restaurants	10-25
Private Dining – Smaller, intimate	26
Private Dining – Large parties	27
Private Dining – Exclusive hire	28
Our food, your place	29
Wish for a fish	30



Japanese with a Nordic touch



Craftsmanship



Classic & creative sushi



*A sushi restaurant
– even for those
who don't like fish*



Made for sharing

FEELING FESTIVE?

SHARING BITES TO START, BEAUTIFULLY PREPARED MAKI ROLLS AND GRILLED STICKS.

Our festive menus bring together a selection of our most popular dishes and bites, sushi favourites, and warm, comforting sticks – perfectly portioned for group dining and joyful moments around the table.

There's something for everyone and plenty to look forward to, whether it be team lunches or end of year celebrations, gather together and raise a glass to the festive season.

BUBBLES TO BEGIN

Brighten up Mondays and Tuesdays from 24th November with a complimentary glass of Champagne and sharing desserts for your party of seven or more, when you book before 31st October.



YUKI

BITES *(For the table)*

MISO SPROUTS. Brussels sprouts, supreme soy, soya sesame & yuzu miso

SHAKE KURUTTA CARPACCIO. Salmon, white soy yuzu ponzu, marinated trout roe, lime dressing, cress, yuzu kosho & shiso

KANI KOROKKE. Crab croquettes with wasabi Caesar

KAMO TATAKI. Seared marinated duck breast, karashi mustard sauce, sweet soy and anise dressing & red radish cress

NIGIRI *(1pc of each per person)*

SHAKE NEW YORK. Salmon & garlic

HIRAMASA YAKI. Seared yellowtail kingfish, tsume and lime salt

MAKI *(4pcs of each per person)*

SPICY TUNA. Tuna, cucumber, spicy sauce, masago, kataifi & cress

PINK ALASKA. Salmon, avocado, cream cheese & lumpfish roe

STICKS *(1pc of each per person)*

CHICKS'N'BLANKETS. Chicken meatballs & pancetta with miso herb butter

SHAKE TERIYAKI. Salmon, teriyaki & spring onion

DESSERT *(+3.5 supplement per person)*

CRÈME BRÛLÉE. Vanilla crème brûlée pot

40 PER PERSON

TOUYA

BITES *(For the table)*

GRILLED EDAMAME. Edamame beans with supreme soy & soya sesame

SHAKE KURUTTA CARPACCIO. Salmon, white soy yuzu ponzu, marinated trout roe, lime dressing, cress, yuzu kosho & shiso

KINOKO KOROKKE. Mushroom croquette, Danish Rød Krystal cheese, miso aioli & truffle dust

KAMO TATAKI. Seared marinated duck breast, karashi mustard sauce, sweet soy and anise dressing & red radish cress

NIGIRI *(1pc of each per person)*

HIRAMASA YAKI. Seared yellowtail kingfish, tsume and lime salt

SHAKE YAKI. Seared salmon, sansho pepper & tsume soy

ABURI *(2pcs per person)*

WAGYU ABURI. Seared Japanese Wagyu, Parmesan, shiitake & soy sesame rice croquette, miso aioli, tsume & kizami wasabi

MAKI *(2pcs of each per person)*

LOBSTER ABOKODO HOUSE ROLL. Lobster & yuzu, avocado, cucumber, soya sesame, chives & coriander

SOFT SHELL CRAB HOUSE ROLL. Softshell crab with masago & spicy sauce

STICKS *(1pc of each per person)*

IBERICO SECRETO. Miso cured black Iberian pork

AKA EBI YAKI. Shrimp, spicy gochujang & garlic butter

DESSERT *(+3.5 supplement per person)*

CRÈME BRÛLÉE. Vanilla crème brûlée pot

65 PER PERSON





EVERGREEN

BITES *(For the table)*

MISO SPROUTS. Brussels sprouts, supreme soy, soya sesame & yuzu miso

BIMI TEMPURA. Tempura tenderstem broccoli with daikon oroshi in shiitake-tentsuyu sauce

GREEN TARTARE BITES. Grilled broccoli marrow, ginger, yuzu, avocado, coriander on crispy flat bread

SUSHI

NASU ABURI. Seared aubergine, sushi rice, miso, kizami wasabi & crispy nori *(2pcs per person)*

RED N GREEN ROLL. Roasted pepper, avocado, cucumber, yuzu-kosho, shiso & tsume *(2pcs per person)*

RICE PAPER KINOKO. Confit portobello mushroom, pickled red onion, avocado, cucumber & coriander, goma *(4pcs per person)*

STICKS *(1pc of each per person)*

SHISHITO. Padron peppers, spicy gochujang, tsume & lime sauce

ERINGI YAKI. King oyster mushroom & miso herb sauce

DESSERT *(+3.5 supplement per person)*

PASSION FRUIT. Coconut rice pudding pot with passion fruit & basil seeds

40 PER PERSON

NEVER ENOUGH

PERFECT FOR FOUR OR MORE

Dark chocolate fondant with matcha core,
vanilla and chocolate ice cream with miso caramel,
crème brûlée with black sesame crumble,
shortcrust pastry with yuzu curd & yuzu meringue,
coconut rice pudding with mango sorbet &
passionfruit coulis and chocolate fish

54



CHAMPAGNE & COCKTAILS

S'MORE COFFEE

Black Twist coffee, 42 Below vodka, cold espresso and marshmallow foam top.

12

COTTON GINGER FIZZ

Campari, yuzushu, sour cherry, bramble cordial and ginger ale, dressed with cotton candy.

13

CHAMPAGNE COLLET BRUT 1ER CRU, 'ART DÉCO' NV [12.5%]

CHAMPAGNE, FRANCE

Creamy in style, with developed biscuity notes and a lovely long and savoury finish.

Bottle 76 / Glass 125ml 14.5

CHAMPAGNE COLLET BRUT ROSÉ NV [12.5%]

CHAMPAGNE, FRANCE

Delicate aromas of mandarin, peach, mulberries and raspberries lead to a refreshing palate, with a richness of fruit and a silky texture, sustained by a delicate sparkle.

Bottle 80 / Glass 125ml 15.5

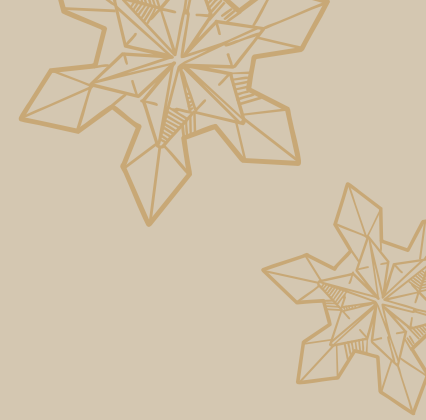
CHAMPAGNE COLLET BRUT 1ER CRU BLANC DE BLANCS NV [12.5%]

CHAMPAGNE, FRANCE

Vivacious and fresh, with bright citrus notes with hints of white pepper and brioche. Complex and elegant with a long finish.

Bottle 120





OUR RESTAURANTS

FROM SMALL GATHERINGS WITH FRIENDS AND FAMILY
TO HOSTING THE WHOLE TEAM AT ONE OF OUR RESTAURANTS



Restaurant right



Restaurant left



Bar area

BATTERSEA

PERFECT FOR SEMI-PRIVATE DINING OR EXCLUSIVE TAKEOVERS

Our beautiful restaurant in Battersea, the newest fish in our pond, overlooks the majestic South Entrance to Battersea Power Station. With a view of the bar and open kitchen, this versatile space accommodates parties of all sizes or full hire for nearly 200

Smaller: For the more intimate groups, choose from two feasting tables seating eight guests or pick a side of the restaurant for a semi-private takeover.

WHAT TO EXPECT

An open kitchen, space to move, semi-private areas, feasting tables and snugs. Plus one of the largest heated terraces in Battersea for those that like to get some 'fresh air' during the party season.

LOCATION

6 Electric Boulevard, Battersea Power Station. SW11 8AL.

	STANDING	SEATED	AREA INFO
BAR	13	20	Festive drinks/canapés
RESTAURANT (LEFT)	72	50	Semi-private
RESTAURANT (RIGHT)	120	70	Semi-private
FULL RESTAURANT HIRE	200	190	Exclusive hire with bar



CAMBRIDGE

PERFECT FOR SEMI-PRIVATE DINING AND SMALL GROUPS

Just a short walk from the prestigious Cambridge University and across from the Corn Exchange, expect a vibrant dining experience in a historic setting. The versatile space can accommodate a variety of group sizes and fully fits the brief for festive dining.

Smaller: For the more intimate groups, choose from a feasting table seating twelve guests, The Library Room seating up to twenty-seven, or pick a side of the restaurant for a semi-private takeover.

WHAT TO EXPECT

A buzzy open kitchen and lively central cocktail bar, in a warm, inviting atmosphere.

LOCATION

2 Wheeler Street Cambridge CB2 3QJ.

	STANDING	SEATED	AREA INFO
FEASTING TABLE		12	Perfect for small groups
RESTAURANT (RIGHT)		26	Perfect for small groups
THE LIBRARY ROOM (COUNTER & HIGH TOPS)	20	27	Available for private hire



Kimono Room



Restaurant



Bar Area

CANARY WHARF

PERFECT FOR SEMI-PRIVATE DINING AND LARGE GROUPS

Located conveniently next to the Elizabeth Line on Crossrail Place, our restaurant blends industrial history with modern elegance. A large space that accommodates a variety of group sizes and fully fits the brief for festive dining in the City.

Smaller: Our Kimono Room at the front of the restaurant benefits from ample natural light and high ceilings, making the private dining room feel big and airy.

WHAT TO EXPECT

A vibrant open kitchen, a large, but not imposing, dining room and a semi-private space near a welcoming bar.

LOCATION

1 Crossrail Place, London, E14 5AR.

	STANDING	SEATED	AREA INFO
KIMONO ROOM	40	26	Semi-private, curtained
RESTAURANT (BACK)	50	35	Festive drinks/canapés





The King's Room



Restaurant Upstairs



Lounge

CHELSEA

PERFECT FOR SEMI-PRIVATE DINING AND SMALL GROUPS

Our Chelsea restaurant on King's Road embodies sophistication and modernity, all while maintaining a welcoming cosy atmosphere. Set over two floors, the space accommodates a variety of group sizes and fully fits the brief for festive dining.

Smaller: Choose The King's Room, a light-filled private dining space with two banquettes and a striking marble table. It seats up to 30 guests and is separated by a curtained glass partition, offering privacy while maintaining the lively atmosphere.

WHAT TO EXPECT

Spread over two levels, the ground floor showcases a large open kitchen and a cocktail bar. Ascend to the first floor, you will find a room perfect for accommodating gatherings, be it intimate or large parties.

LOCATION

113-115 King's Road, London, SW3 4NT.

	STANDING	SEATED	AREA INFO
FEASTING TABLE		8	Perfect for small groups
KING'S ROOM PDR		30	Private room
RESTAURANT (UPSTAIRS)	80	60	Perfect for bigger groups



Romeo & Juliete



Downstairs



Restaurant (Back)

COVENT GARDEN

PERFECT FOR SMALL GROUPS

In London's theatre quarter, our restaurant on Henrietta Street combines rustic charm with modern elegance. Enjoy quality sushi and Japanese-inspired cocktails in a historic setting near the piazza – perfect for festive dining in the heart of the West End.

Smaller: For group dining, our feasting table seat ten guests. For larger gatherings, the rear of our restaurant can accommodate up to sixteen guests comfortably.

WHAT TO EXPECT

A long, inviting space set over two floors, with an open kitchen and cozy atmosphere downstairs and feasting tables and cocktail bar above.

LOCATION

11 Henrietta Street, London WC2E 8PY.

	STANDING	SEATED	AREA INFO
FEASTING TABLE		10	Perfect for small groups
RESTAURANT		16	Perfect for small groups
BAR	22	16	Festive drinks



Restaurant (Front)



Restaurant (Middle)



Restaurant (Back)

GREENWICH

PERFECT FOR SEMI-PRIVATE DINING AND SMALL GROUPS

Experience our restaurant, nestled in the heart of England's maritime history. Located near the Cutty Sark, our Greenwich restaurant offers Nordic airiness and cozy corners.

Smaller: This versatile space suits a variety of group sizes, with flexible table configurations ideal for intimate dinners or larger gatherings of up to 30 guests.

WHAT TO EXPECT

An inviting open kitchen, sleek cocktail bar, and warm, minimalist interiors. Set across a long, flowing space for cosy events and group celebrations.

LOCATION

1 Nelson Road SE10 9JB.

	STANDING	SEATED	AREA INFO
RESTAURANT (FRONT)	20	28	Perfect for small groups
RESTAURANT (MIDDLE)		24	Perfect for small groups
RESTAURANT (BACK)	40	30	Perfect for small groups



Feasting Table



High Top



Lounge

ISLINGTON

PERFECT FOR SEMI-PRIVATE DINING OR EXCLUSIVE TAKEOVERS

Sticks'n'Sushi Islington offers a warm and stylish setting for festive celebrations - be it a work dinner, canapé reception, or seasonal gathering. With space for up to 60 guests, it's perfectly suited to intimate occasions and large events.

Smaller: For smaller groups, enjoy the feasting table at the back of the restaurant for up to ten guests, or our sushi high-top tables seating up to 14. For canapé and drinks events, the lounge area comfortably accommodates up to 18 guests.

WHAT TO EXPECT

The restaurant combines Japanese minimalism and Scandinavian elegance, using contrasting tones and natural materials to create a warm, inviting open-plan dining space.

LOCATION

77-78 Upper Street, N1 0NU.

	STANDING	SEATED	AREA INFO
FEASTING TABLE		10	Perfect for smaller groups
HIGH TOPS		14	Perfect for smaller groups
LOUNGE		18	Perfect for smaller groups
RESTAURANT		66	Perfect for smaller groups
FULL RESTAURANT HIRE	80	100	Exclusive hire with bar



Kimono Area



Upstairs



Semi private dining

KINGSTON

PERFECT FOR SEMI-PRIVATE DINING OR EXCLUSIVE TAKEOVERS

Located on the ground floor facing outward of the Bentall centre, Sticks'n'Sushi Kingston blends Japanese minimalism and Scandinavian elegance seating 200 across two floors. Kingston boasts versatility for multiple group sizes including full private hire of the first floor.

Smaller: Our Kimono area at the front of the restaurant suits smaller groups in an open plan, semi-private setting and the buzz of the restaurant alongside.

WHAT TO EXPECT

An open kitchen, with versatile group dining including a large upstairs room complete with its own bar and semi-private snug.

LOCATION

The Bentall Centre, Wood Street, Kingston-Upon-Thames, KT1 1TP.

	STANDING	SEATED	AREA INFO
SEMI PRIVATE DINING		26	Perfect for small groups
KIMONO AREA	40	35	Semi-private
UPSTAIRS	120	70	Available for private hire
FULL RESTAURANT HIRE ACROSS TWO FLOORS	300	200	Exclusive hire with bar



Semi Private Mini Ichi



Restaurant



Semi Private Area

OXFORD

PERFECT FOR SEMI-PRIVATE DINING, SMALL GROUPS OR EXCLUSIVE TAKEOVERS

Located on the rooftop of Westgate Shopping Centre, our Oxford restaurant serves classic and creative sushi, sticks, and Japanese-inspired cocktails – paired with stunning views of the city's historic spires. A unique and memorable setting for festive dining.

Smaller: Designed for open-plan dining, the restaurant easily accommodates groups of up to 80 guests. Flexible seating across multiple tables allows space to mingle, socialise, and enjoy the festive atmosphere – whether for a seated dinner or informal drinks.

WHAT TO EXPECT

Our Oxford restaurant offers a harmonious blend of Danish twilight cosiness, with dark leather, deep blue walls, and soft curtains that create a sense of intimacy and separation between guests.

LOCATION

Rooftop Terrace 311 The Westgate Castle Street, Oxford, OX1 1NZ.

	STANDING	SEATED	AREA INFO
SEMI PRIVATE AREA		20	Semi-private, curtained
SEMI PRIVATE MINI ICHI	25	25	Semi-private, curtained
RESTAURANT	80	60	Perfect for bigger groups
FULL RESTAURANT HIRE	160	139	Exclusive hire with bar





Restaurant



Restaurant



Bar

RICHMOND

PERFECT FOR SEMI-PRIVATE DINING AND GROUPS

Just moments from Kew Gardens and the River Thames, Sticks'n'Sushi Richmond offers a calm retreat from the festive rush. Enjoy quality sushi and grilled sticks in a stylish, minimalist setting surrounded by charming streets and seasonal greenery.

Smaller: For the more intimate groups, pick a side of the restaurant for a semi-private takeover or choose our stunning bar for festive drinks and canapés.

WHAT TO EXPECT

A central open kitchen surrounded by warm lighting and modern finishes, creating a stylish and welcoming setting for any festive occasion.

LOCATION

80 George Street, Richmond Upon Thames, TW9 1HE.

	STANDING	SEATED	AREA INFO
RESTAURANT		70	Perfect for bigger groups
BAR	20	18	Festive drinks/canapés

*Restaurant**Semi private dining**Lounge*

SHOREDITCH

PERFECT FOR SEMI-PRIVATE DINING OR EXCLUSIVE TAKEOVERS

Our semi-private dining area accommodates parties of up to 18 for seated dining with the versatility of back area hire for up to 60 either as seated or a canapé and drinks reception. With a view of our stunning central bar, you'll be at the heart of the action, making the space ideal for celebratory gatherings and memorable evenings.

Smaller: For a cosier event setting, choose our semi-private area which accommodates up to 18 guests, sectioned off by a sheer curtain. You'll enjoy the buzz of this unique space without sacrificing intimacy.

WHAT TO EXPECT

An open kitchen, a spacious bar area, lounge, semi-private dining and more.

LOCATION

100 Shoreditch High St, London E1 6JQ.

	STANDING	SEATED	AREA INFO
LOUNGE	20	12	Festive drinks/canapés
RESTAURANT SEMI PRIVATE	80	60	Perfect for large groups across multiple tables
SEMI PRIVATE DINING		18	Perfect for small groups, curtained
FULL RESTAURANT HIRE	250	150	Exclusive hire with bar



Ground Floor



Sushi Counter



Sushi High-tops

SOHO

PERFECT FOR SEMI-PRIVATE DINING AND GROUPS

Experience vibrant Soho during the festive season while enjoying classic and creative sushi in a Danish “hygge”-inspired setting. Located on Beak Street, just moments from the bustling Carnaby Street, our Soho restaurant is perfect for festive dining, from intimate dinners to lively gatherings.

Smaller: For more intimate group dining, our lower floor offers sushi counter and high-top tables beside the open kitchen – creating a semi-private experience for up to 25 guests.

WHAT TO EXPECT

Set over two floors, the interior features clean lines, soft lighting, and natural materials, blending Scandinavian elegance with Japanese minimalism to create a warm and inviting atmosphere.

LOCATION

40 Beak Street W1F 9RQ.

	STANDING	SEATED	AREA INFO
RESTAURANT		30	Festive drinks/canapés
SUSHI BAR (DOWNSTAIRS)	25	16	Semi-private dining



VICTORIA

PERFECT FOR SEMI-PRIVATE DINING AND GROUPS

Located in Victoria Nova development, our Victoria restaurant combines Danish “hygge” and Japanese minimalism. For larger parties up to 80 people, exclusive hire of the first floor of the restaurant is available for a bespoke festive private dining experience.

Smaller: The first floor offers a semi-private area for up to 16 guests seated across raised tables. Long curtains are arranged to separate the dining space from the main floor.

WHAT TO EXPECT

Split over two levels, the ground floor features a striking bar, while upstairs you'll find the open kitchen and cosy dining tables. Flexible table configurations make it easy to accommodate groups of all sizes.

LOCATION

Unit 3-5 3 Sir Milton Square London SW1E 5DJ.

	STANDING	SEATED	AREA INFO
SEMI-PRIVATE		16	Semi-private dining
BAR (GROUND FLOOR)	20	16	Festive drinks/canapés
RESTAURANT SEMI PRIVATE		50	Perfect for bigger groups
EXCLUSIVE HIRE		80	Perfect for bigger groups



Ground Floor



First Floor



Shared Table

WHITE CITY

PERFECT FOR SEMI-PRIVATE DINING AND GROUPS

Our Westfield White City restaurant, two minutes' walk from Shepherd's Bush station blends Japanese minimalism with Danish hygge, creating a warm, inviting escape. Enjoy classic and creative sushi, plus grilled sticks – perfect for group dining during the festive season.



Smaller: The first floor offers a relaxed contemporary setting with a large communal table for groups of up to 12. For bigger celebrations, the space can be hired exclusively for up to 70 guests.

WHAT TO EXPECT

The restaurant spans two floors: a cosy, Scandinavian-inspired ground floor with intimate seating and open kitchen, plus a spacious first floor featuring a central communal table ideal for groups and shared sushi experiences.

LOCATION

Unit 1035, southern terrace, Ariel way. London, W12 7GA.

	STANDING	SEATED	AREA INFO
RESTAURANT (UPSTAIRS)	70	50	Exclusive first floor
RESTAURANT (GROUND FLOOR)		50	Perfect for bigger groups
FEASTING TABLE		10	Perfect for smaller groups

*Restaurant**Bar Counter**Sofa*

WIMBLEDON

PERFECT FOR SEMI-PRIVATE DINING AND GROUPS

Just a short walk from Wimbledon station, we offer a Japanese dining experience in an intimate setting – perfect for the festive season. Enjoy classic and creative sushi, warm sticks from the grill, and a cosy atmosphere loved by locals and visitors alike.

Smaller: The restaurant space is versatile, with table configurations to suit all group sizes. Choose from low-level sofa seating for up to twelve guests, or take canapés and cocktails at the bar counter for parties up to sixteen.

WHAT TO EXPECT

The restaurant is open, and the long, wavy curtains conceal the exposed brick wall for a cosy backdrop.

LOCATION

58 Wimbledon Hill, SW19 7PA.

	STANDING	SEATED	AREA INFO
RESTAURANT		90	Perfect for bigger groups
SOFAS		12	Perfect for smaller groups
BAR COUNTER		16	Perfect for smaller groups

SMALLER, INTIMATE

BEST FOR GROUPS UP TO 30



KING'S ROAD 30 guests

A beautifully light and elegant private dining space at the far end of the first floor. Seats up to 30 guests across two banquettes and a stunning marble central table.



SHOREDITCH 18 guests

For an intimate event setting, choose our semi-private area which accommodates up to 20 guests, sectioned off by a sheer curtain.

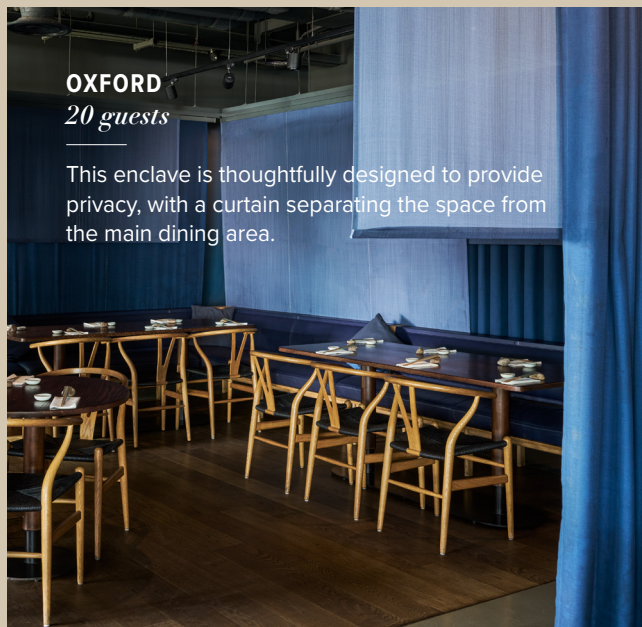
CANARY WHARF 22 guests

Located at the front of the restaurant, our Kimono Room benefits from ample natural light and high ceilings, making the private dining room feel big and airy.



OXFORD 20 guests

This enclave is thoughtfully designed to provide privacy, with a curtain separating the space from the main dining area.



KINGSTON 20 guests

This space is naturally sectioned off from the main restaurant hosting up to 20 guests for the ultimate private dining experience.

LARGE PARTIES

FOR GROUPS OF 30 AND OVER



WHITE CITY 50 guests

The first floor offers a more expansive dining area, ideal for groups and circulated canapés.



SHOREDITCH 60 guests

With a view of our stunning central bar, you'll be at the heart of the action, making the space ideal for celebratory gatherings and memorable evenings.



VICTORIA 80 guests

For larger parties, exclusive hire of the first floor of the restaurant is available for festive group bookings.



KINGSTON 70 guests

Located on the first floor with its own bar – this is one of South West London's best private dining rooms.

EXCLUSIVE HIRE

WHEN YOU WANT IT ALL TO YOURSELF



OUR FOOD, YOUR PLACE

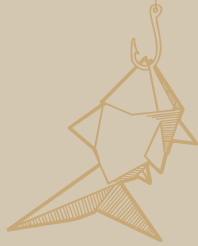
FESTIVE CATERING, DELIVERED

We offer bespoke, beautifully versatile festive catering; made entirely for you. From circulated canapés, grazing stations, seated dining to fully serviced pop-up bars – we bring the Sticks'n'Sushi experience wherever you need it this season. Our Sushi is hand rolled, our fish is hand sliced and our sticks are crafted with care; from ingredients to presentation, flavour to flow that will transform your special moments to lasting memories.

Born in Copenhagen and rooted in 30 years of culinary heritage, expect presentation that draws attention. Since 2012, we've been serving freshly rolled sushi across London in our restaurants and now to some of London's most recognisable offices, venues and event spaces.

At Sticks'n'Sushi, we're for everyone. Fish lovers, meat eaters, plant-based diners and those with allergies or aversions, our menus flex to suit every guest. Because good hospitality starts with knowing how to make people feel considered. And that's what we do best.

VIEW OUR CATERING BROCHURE



WISH FOR A FISH

Gift cards for all, big and small



Looking for the perfect gift for a sushi-lover?

Our experience tells us that a Sticks'n'Sushi gift card usually goes down a treat.
Order online or pop into your local Sticks'n'Sushi.

By the way, gift cards can also be a perfect present for any employee (hint, hint...)



*LET US
TAKE CARE OF YOU
THIS CHRISTMAS*



Contact our team on 020 3141 8840
or reservations@sticksnsushi.com

All prices are inclusive of VAT. An optional service charge of 12.5% will be added to your bill. Every penny is distributed to the team.



STICKS | N | SUSHI

sticksnsushi.com